

THIRD ANGLE PROJECTION

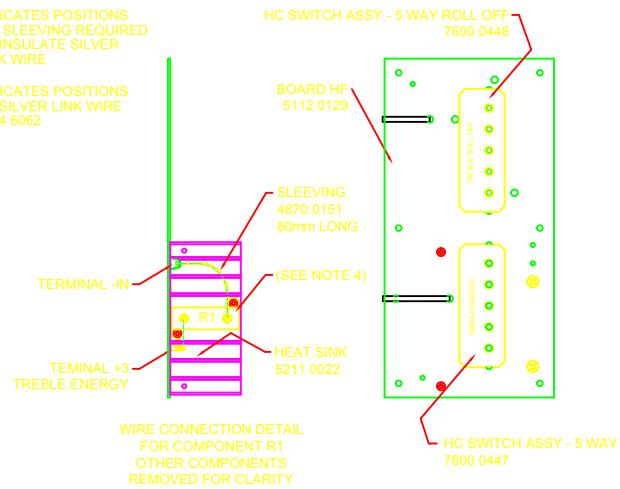
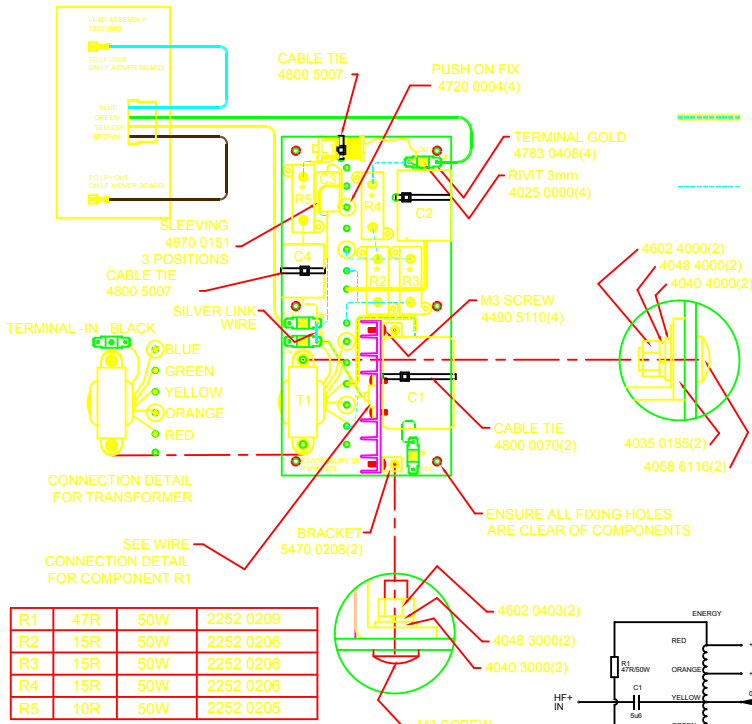


NOTES

1. ENSURE ALL COMPONENTS AND WIRES ARE SECURELY FIXED IN PLACE USING HOTMELT, WITH DESCRIPTIONS VISIBLE.
2. ALL ELECTRICAL CONNECTIONS TO BE SOLDERED.
3. ADHESIVE SEALANT (BLACK TITE) TO BE USED TO SECURE COMPONENTS R2, R3, R4, R5 - *
4. SILICON GREASE TO BE APPLIED TO COMPONENT R1 BEFORE FIXING TO HEAT SINK.
5. USE SILVER LINK WIRE WHERE REQUIRED ENSURING THEY ARE SECURELY FIXED IN POSITION.

INDICATES POSITIONS OF SLEEVING REQUIRED TO INSULATE SILVER LINK WIRE

INDICATES POSITIONS OF SILVER LINK WIRE 1134 6062

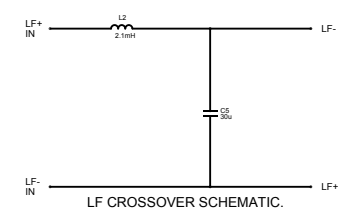
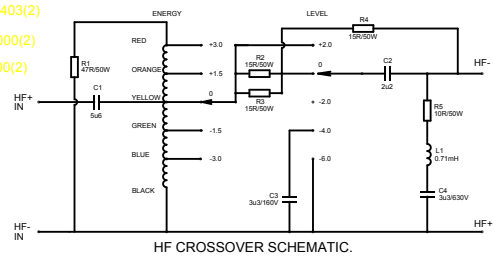


R1	47R	50W	2252 0209
R2	15R	50W	2252 0206
R3	15R	50W	2252 0206
R4	15R	50W	2252 0206
R5	10R	50W	2252 0205

C1	5u6	100V	2606 1401
C2	2u2	100V	2606 1394
C3	3u3	160V	2606 0675
C4	3u3	630V	2606 0818

L1	0.71 mH AIR CORE BOBBIN	7100 0066
----	-------------------------	-----------

T1	MF/HF 5 TAP	7100 0061
----	-------------	-----------



SEE DRAWING 7300 1146 CROSSOVER LF CANTERBURY SE FOR COMPONENT LAYOUT.

Part No.	7300 1137	
First used on	CANTERBURY SE	
Issue	1	15.05.06 BM
	2	28.09.06 BM TERMINAL BLADE CHANGED FROM 4783 0407 CR 8616
	3	12.10.06 BM SLEEVING CAP AND WIRE CHANGE CR 8619
	4	15.01.07 BM SLEEVING WAS 4870 0160 CR 8637
	5	14.10.09 MS LAYOUT AND COMPONENT CHANGED CR 8764

TANNOY
The contents, information and copyright of this document are the sole property of Tannoy Ltd and must not be published, applied or copied without the express knowledge & permission of the owners.

MATERIAL	FINISH
TITLE	CROSSOVER - HF TYPE 1578 CANTERBURY SE

ALL DIMENSIONS IN MILLIMETRES	
Limits of tolerance unless stated	
One place of decimal dim	±0.4mm
Two places of decimal dim	±0.1mm
Holes 12.0mm dia & under	+0.1 -0.0mm
Holes over 12.0mm dia	±0.4mm

RoHS Compliant
Drawn
Checked
Approved
Scale
7300 1137