

7300 1146

CANTERBURY SE

A 15/06/06 BM

1 15/06/06 BM

2 28/9/06 BM

TERMINAL WAS

4783 0407

CR 8616

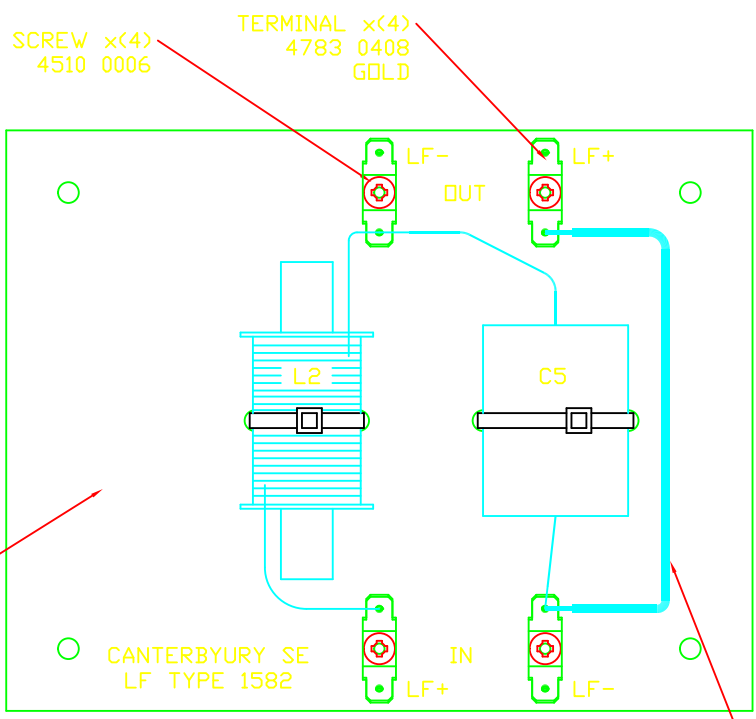
3 27/05/10 MS

ACROLINK WIRE

REPLACED

CR 8783

C5	30u	160V	7100 0110
L2	2.1mH		6811 0086



- NOTES:
1. ENSURE COMPONENTS ARE SECURELY FIXED IN PLACE USING HOTMELT, WITH DESCRIPTIONS VISIBLE.
 2. PRINT TYPE NUMBER ON BOARD.
 3. SEE DRAWING 7300 1137 FOR LF CROSSOVER SCHEMATIC.

Xref c:\draw_sht\A3

CROSSOVER - LF TYPE 1582 CANTERBURY SE

CROSSOVER - TYPE 1582

11
7300 1146