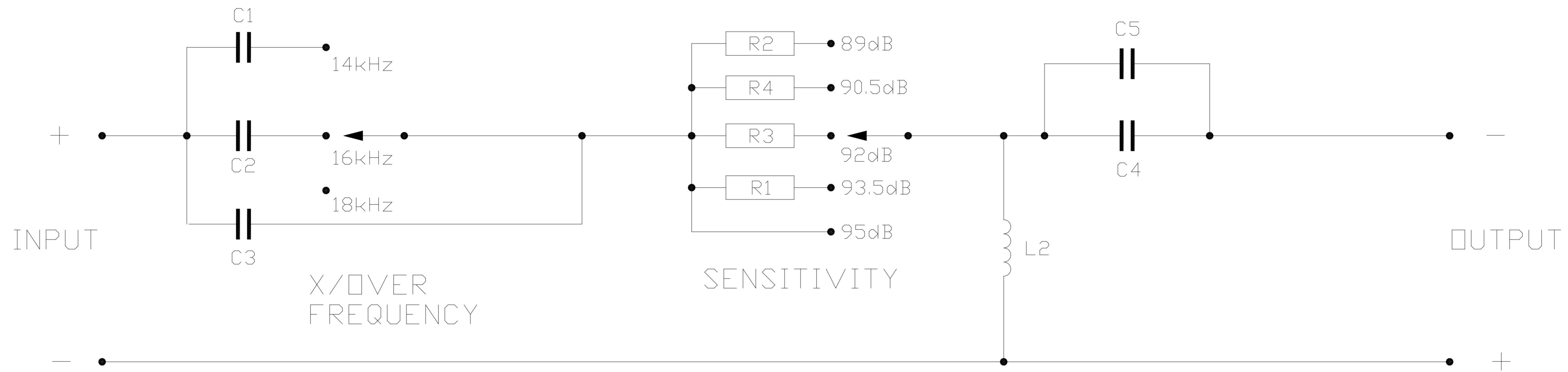
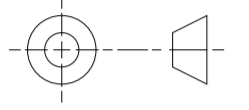


THIRD ANGLE PROJECTION



* NOTE: 1m/m TERMINALS TO BE SOLDERED TO P.C.B. AS FOLLOWS
 4783 0422 1m/m RED TO P.C.B. INPUT(+)
 4783 0424 1m/m GREEN TO P.C.B. OUTPUT(-)
 4783 0421 1m/m BLACK TO P.C.B. INPUT(-)
 4783 0423 1m/m YELLOW TO P.C.B. OUTPUT(+)

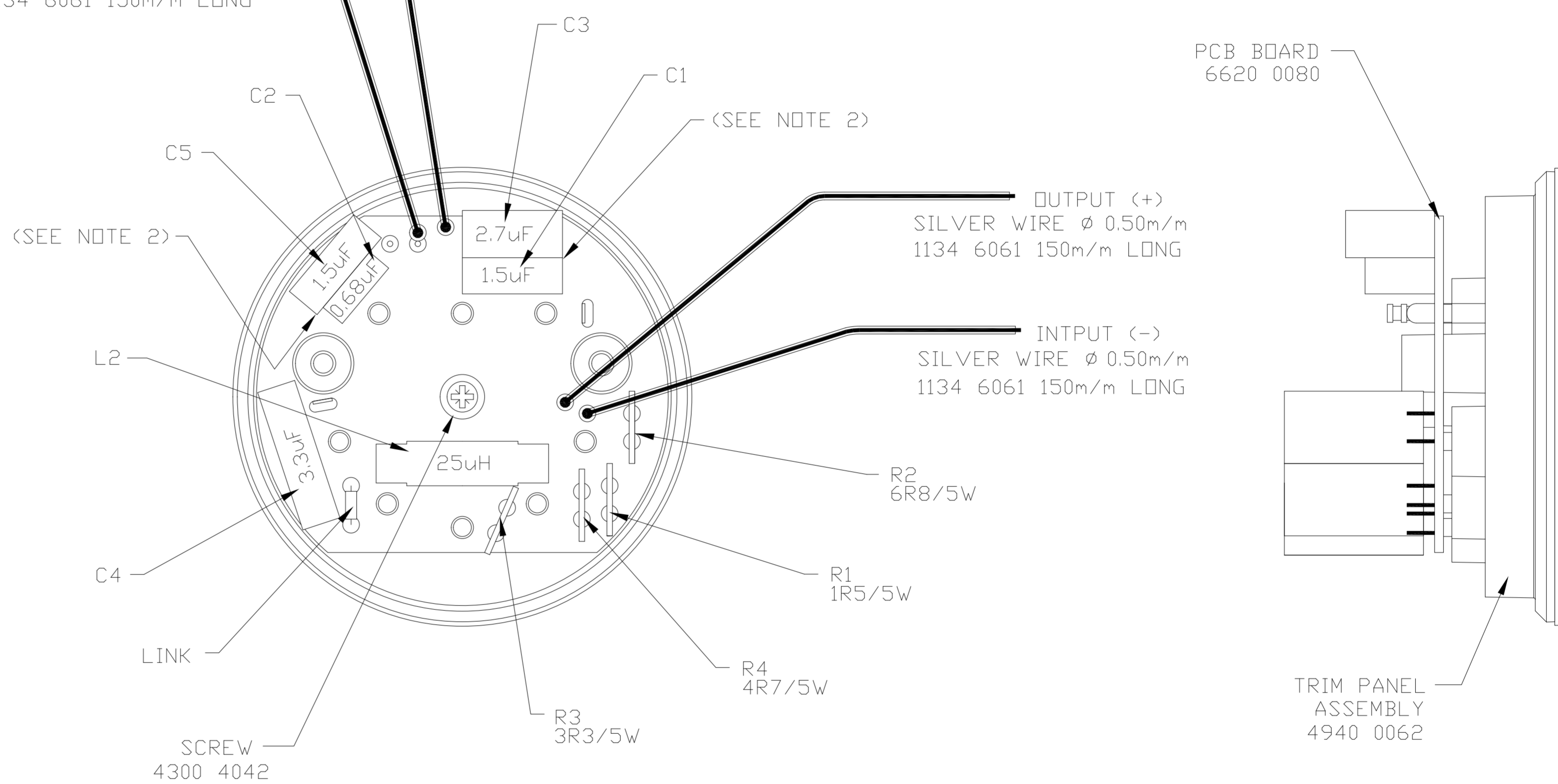
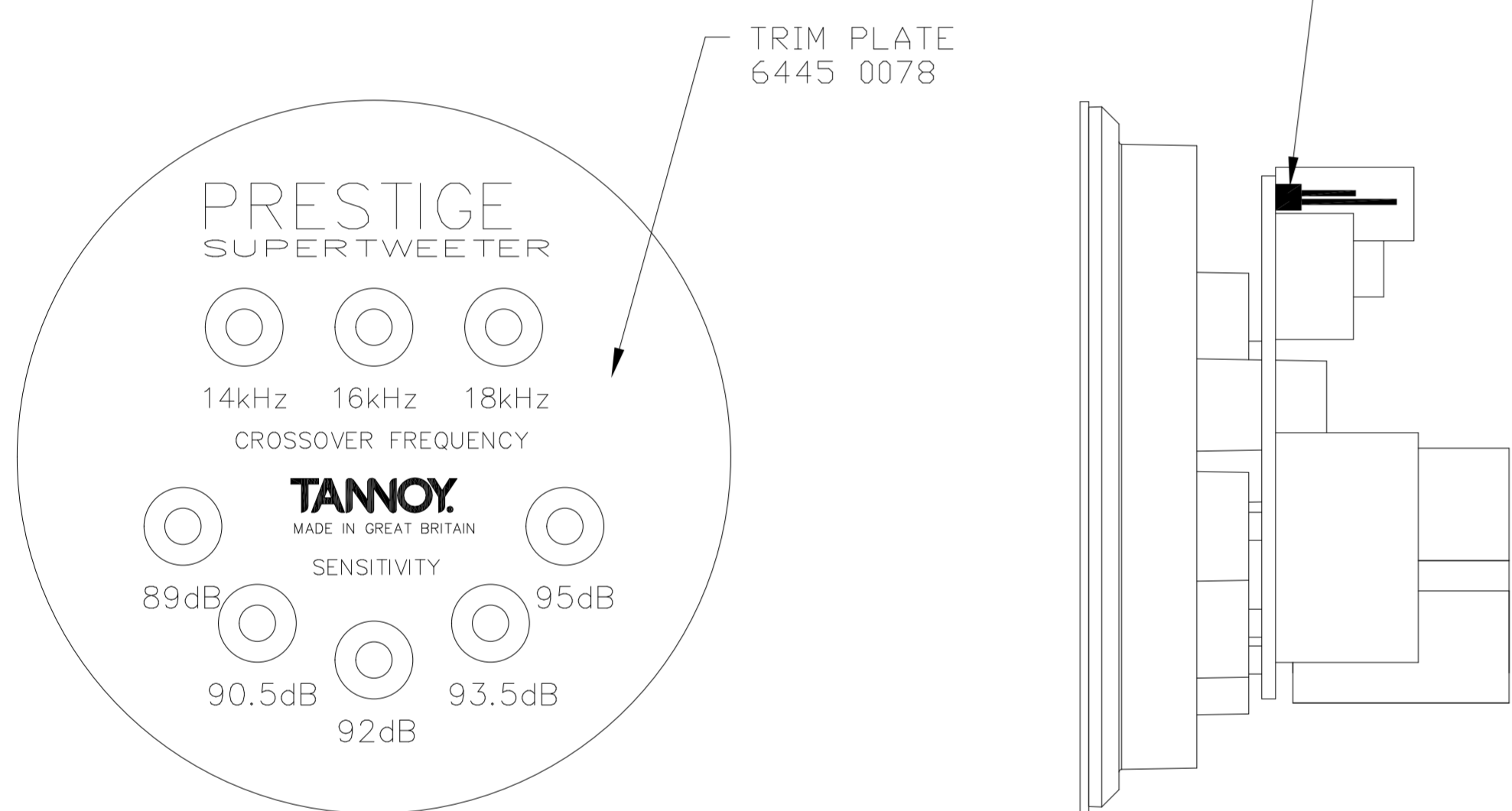
INPUT (+)
 SILVER WIRE ϕ 0.50m/m
 1134 6061 150m/m LONG

* NOTE: SILVER WIRE TO BE COVERED IN SLEEVING CLEAR PTFE BORE ϕ 0.71mm 4870 0162 150m/m LONG IN (4) PLACES

OUTPUT (-)
 SILVER WIRE ϕ 0.50m/m
 1134 6061 150m/m LONG

OUTPUT (+)
 SILVER WIRE ϕ 0.50m/m
 1134 6061 150m/m LONG

INPUT (-)
 SILVER WIRE ϕ 0.50m/m
 1134 6061 150m/m LONG



PCB BOARD
 6620 0080

TRIM PANEL ASSEMBLY
 4940 0062

C1	1.5uF	63V	2606	1363
C2	0.68uF	63V	2606	1356
C3	2.7uF	63V	2606	1366
C4	3.3uF	63V	2606	1369
C5	1.5uF	63V	2606	1363

R1	1R5/5W	2252	9951
R2	6R8/5W	2252	9955
R3	3R3/5W	2252	9953
R4	4R7/5W	2252	9954

L2	25uH AXIAL	6811	0059
----	------------	------	------

* NOTE: 1. ALL TERMINAL PINS & CONTACT STRIPS TO BE SOLDERED TO CIRCUIT
 2. COMPONENTS C1,C3 AND C2,C5 HAVE TO BE FITTED CAREFULLY AS DIMENSIONS ARE SLIGHTLY LARGER THEN ORIGINAL COMPONENTS PCB BOARD WAS DESIGNED FOR.

Part No.	7300 1056
First used on	ST-200 X/OVER
Issues	A 25/2/05 BM
B	19/9/05 BM PICTORIAL UPDATED.
C	12/12/05 BM R1 AND R4 COMPONENTS REVERSED. PCB PART NUMBER UPDATE.
D	8/03/06 BM SILVER WIRE WAS ϕ 0.71mm SLEEVING PTFE WAS 4870 0160 BORE ϕ 0.89

TANNOY

The contents, information and copyright of this document are the sole property of Tannoy Ltd and must not be published applied or copied without the express knowledge & permission of the owners.

MATERIAL

FINISH

ALL DIMENSIONS IN MILLIMETRES

Limits of tolerance unless stated:

One place of decimal dim.

Two places of decimal dim.

Holes 12.0mm dia & under

Holes over 12.0mm dia.

RoHS Compliant

Drawn

Checked

Approved

Scale 1:1

TITLE ST-200 PRESTIGE-SUPERTWEETER CROSSOVER - TYPE 1516

ST-200 PRESTIGE-SUPERTWEETER CROSSOVER - TYPE 1516

A2

7300 1056