

| Service Note | | |
|----------------|-----------------------------|--------------------|
| Product | Description: | Service note no. |
| G-Force | Pedal Input blinking | 720 10 T031 |

IMPORTANT:

This modification should only be carried out by authorized technicians.

Symptoms:

The LED named PEDAL on the front is blinking even without a pedal connected.

Procedure:

1. Make a backup copy of the user presets on a memory card.
2. Turn Off Power and Disconnect Power Cord.
3. Remove the top lid by loosen five screws.
4. Mount a 470 nF capacitor from C30 to pin 87 at IC3, on the component side of the main board, see fig. 1.
5. Dismount the main board.
6. Mount a wire between pin 3 and 6 at CN4, on the solder side of the main board, see fig. 2.
7. Mount the main board.
8. Remove the capacitor C219. The wire connected to one of the pads MUST remain! See fig. 3.
9. Mount the top lid.

Fig. 1

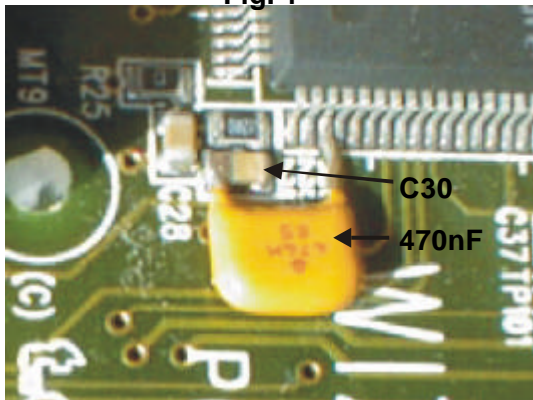


Fig. 2

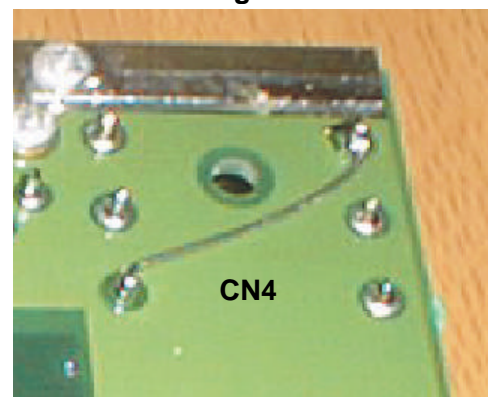


Fig. 3

