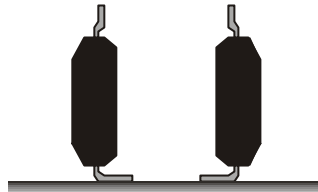


Service Note		
Product	Description:	Service note no.
Gold Channel	IC38 on Main Board ver. 5	720 10 T032

IC38 on GoldChannel main board version 5 is actually two 5532 dual op-amps in order to obtain a better channel separation.

The two 5532 op-amps are fitted upright standing on one of their side the pads on the circuit board as shown below:

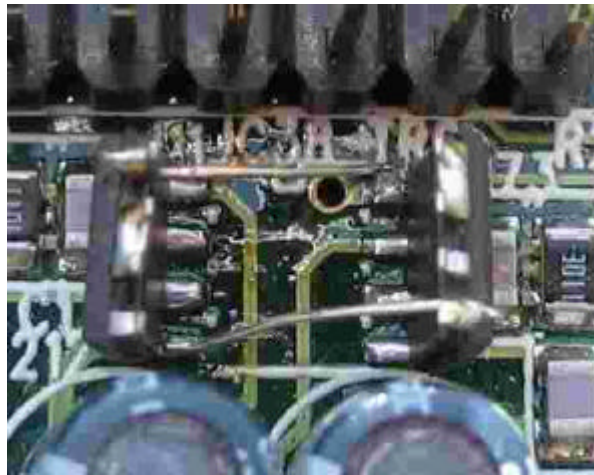


For the 5532 to the left:

IC pin No.:	Connect to:
1	pin1 on the circuit board
2	pin2 on the circuit board
3	pin3 on the circuit board
4	pin4 on the circuit board
5	no connection
6	same IC pin 7
7	see above
8	wire to pin8 on the circuit board

For the 5532 to the right:

IC pin No.:	Connect to:
1	same IC pin 2
2	see above
3	no connection
4	wire to pin4 on the circuit board
5	pin5 on the circuit board
6	pin6 on the circuit board
7	pin7 on the circuit board
8	pin8 on the circuit board



It is not necessary to fix the ICs with silicone after repair as done in the factory modification - if the ICs have been properly mounted and soldered.