

RH750, Buster, 1157 assembly guide Version A

Scope

This assembly guide is an addendum to the RH450/Dirch/1038 assembly guide and the purpose is to describe the difference in assembly of the RH750.

Document History

Date	Initials	Description
17-9-2010	MC	Document created

Related documents

- [1] Doc1
- [2] Doc2

Table of contents

RH750, Buster, 1157 assembly guide Version A 1
Scope 1
Document History 1
Related documents 1
Table of contents 2
Headphone Assembly 3

Headphone Assembly

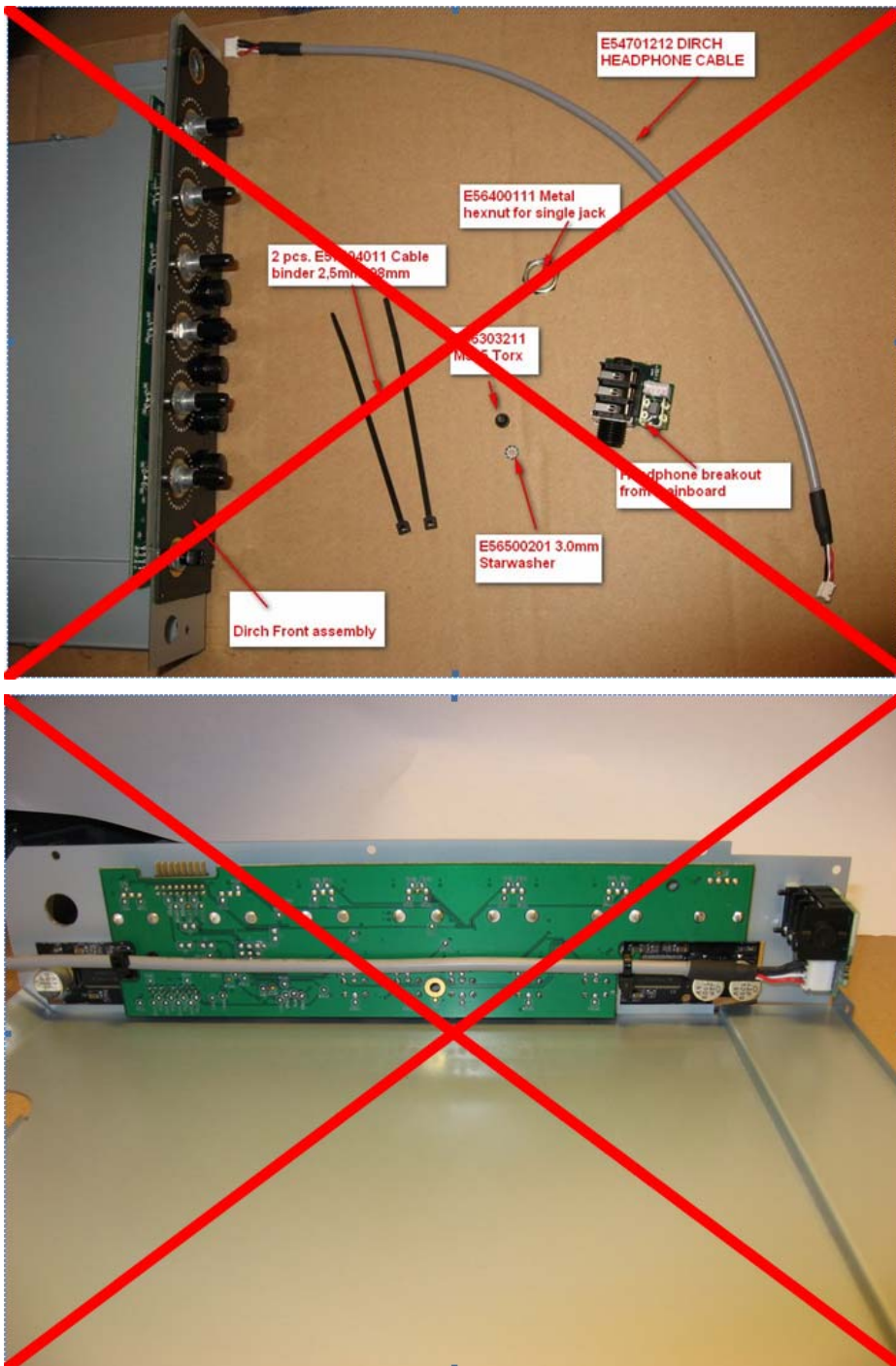


Figure 1: The RH450 Headphone PCB and cable should not be mounted. Instead the RH750 Buster P18507 PCB should be mounted.

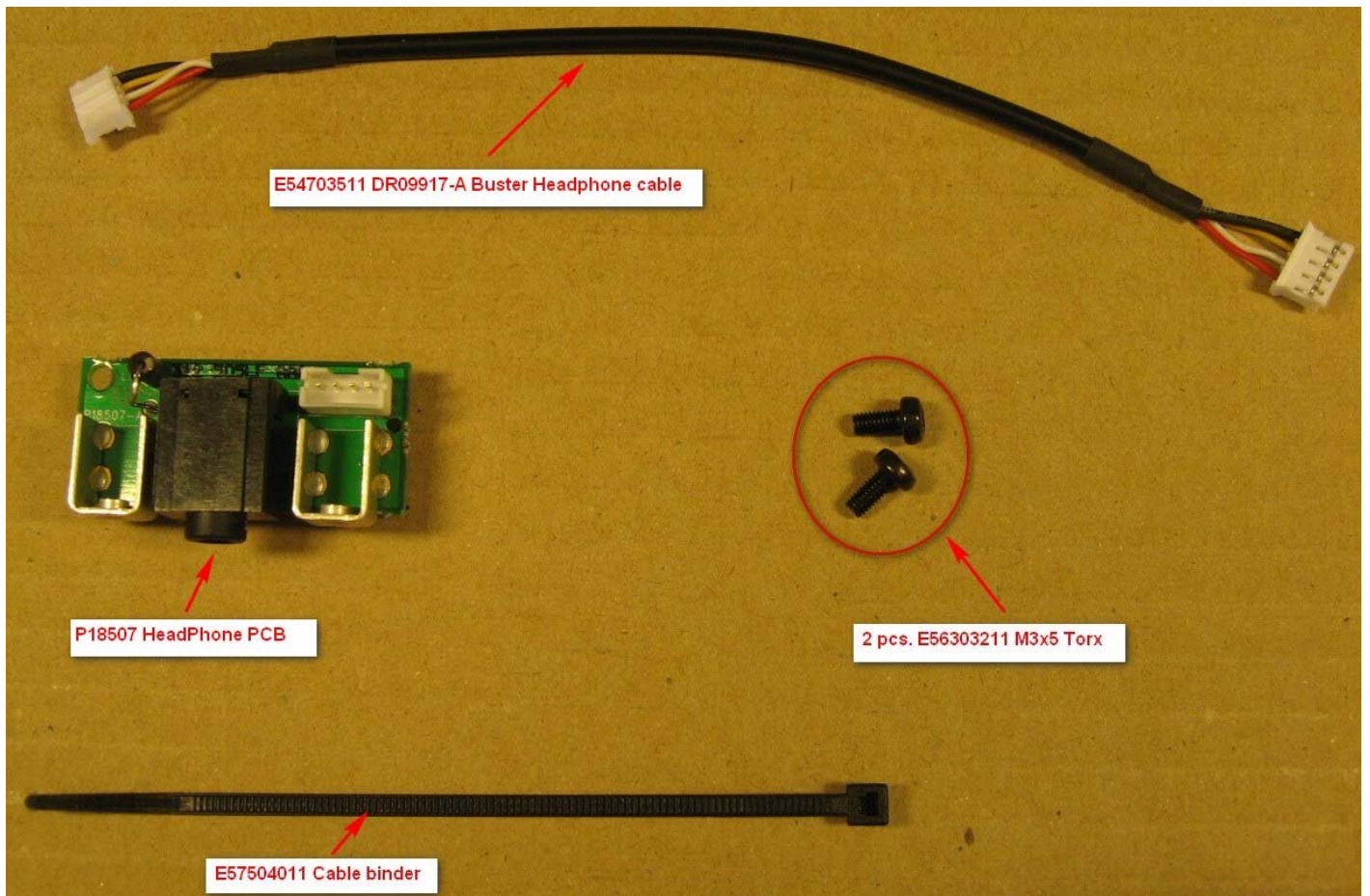


Figure 2: Components used for the P18507 Headphone assembly.

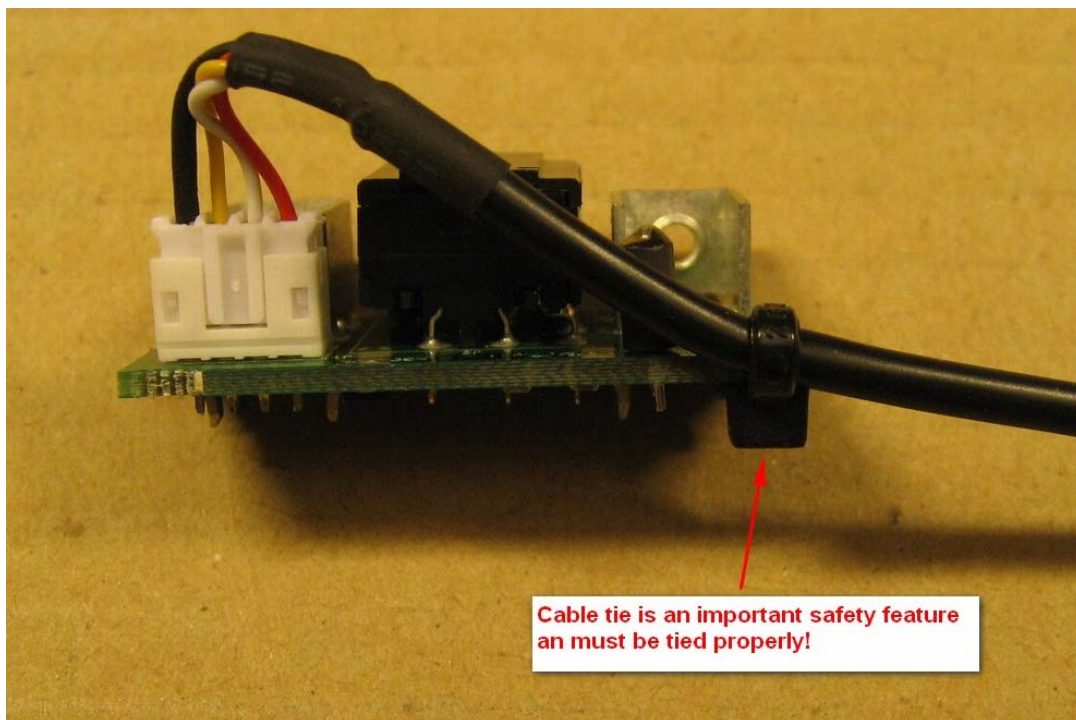


Figure 3: Mount the cable using a cable tie as shown in the picture. The cable should bend as shown on the picture. The cable tie is an important safety feature and must be tightened firmly.



Figure 4: Mount the P18507 headphone PCB using two screws as shown in the picture.

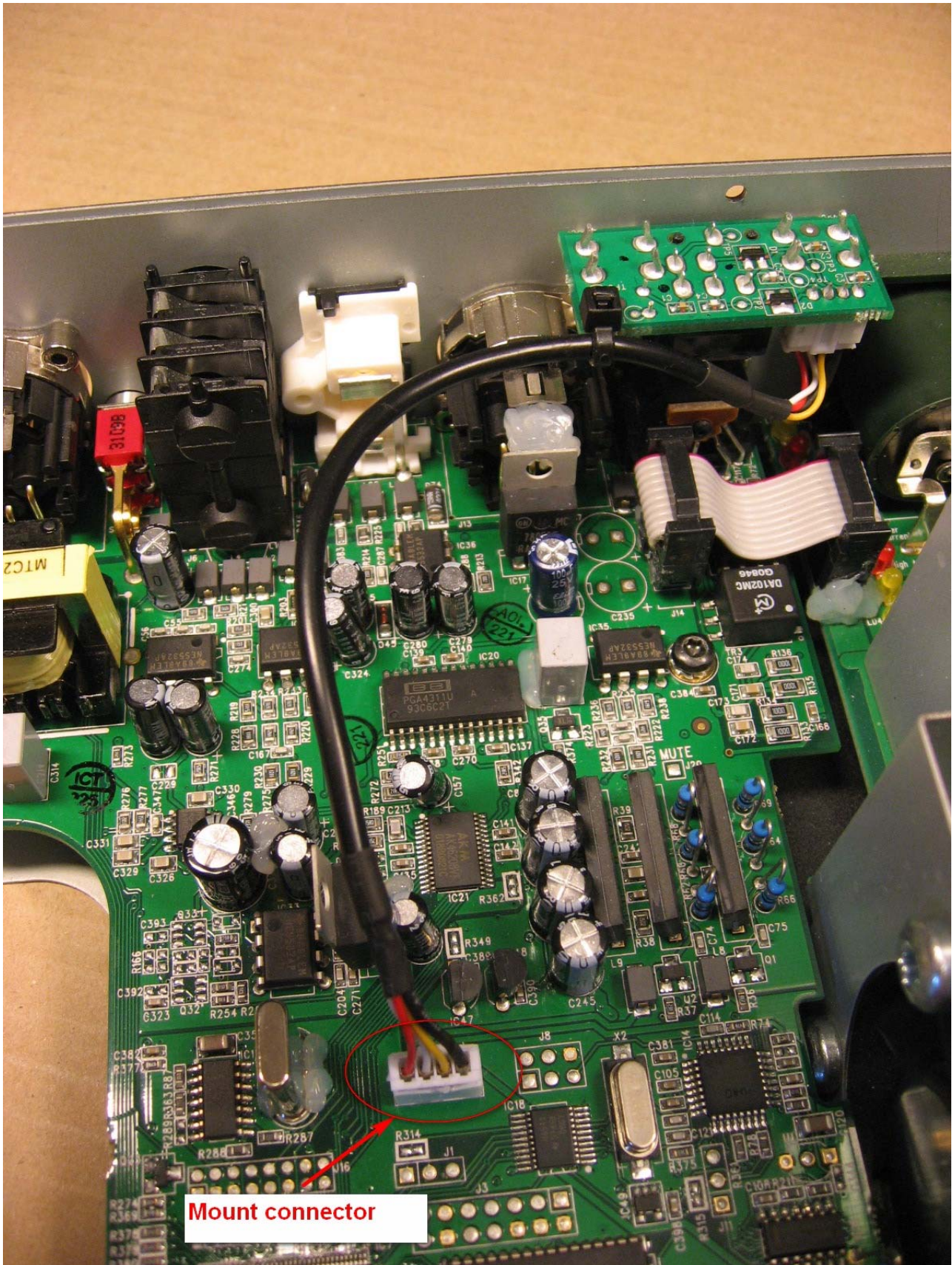


Figure 5. Mount the connector into the mainboard as shown in the picture.