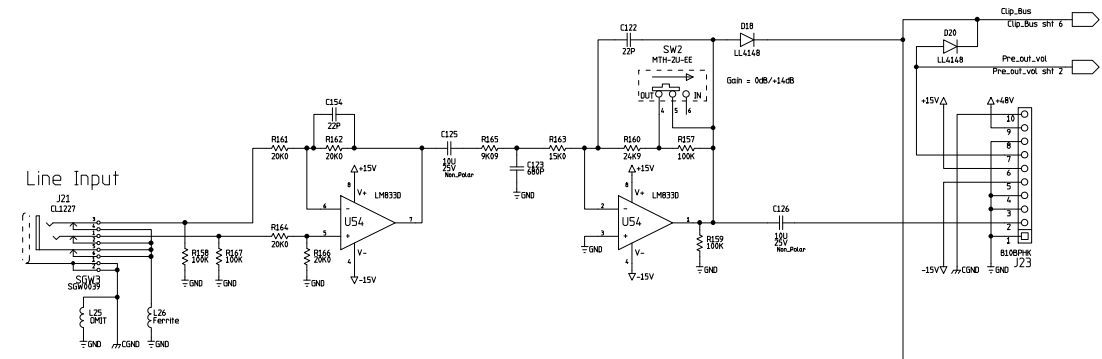
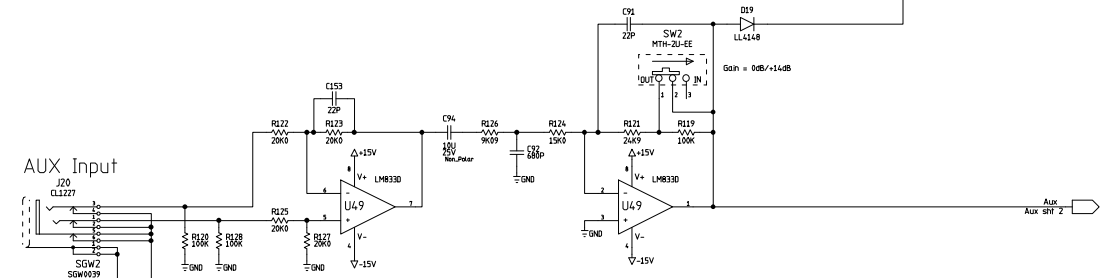


REVISIONS			
REV	DESCRIPTION	DATE	APPROVED

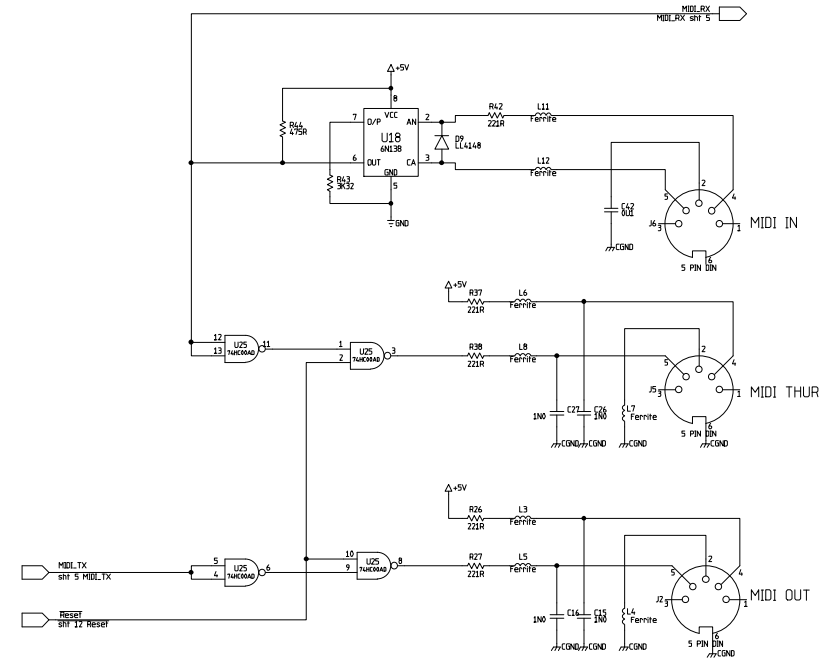
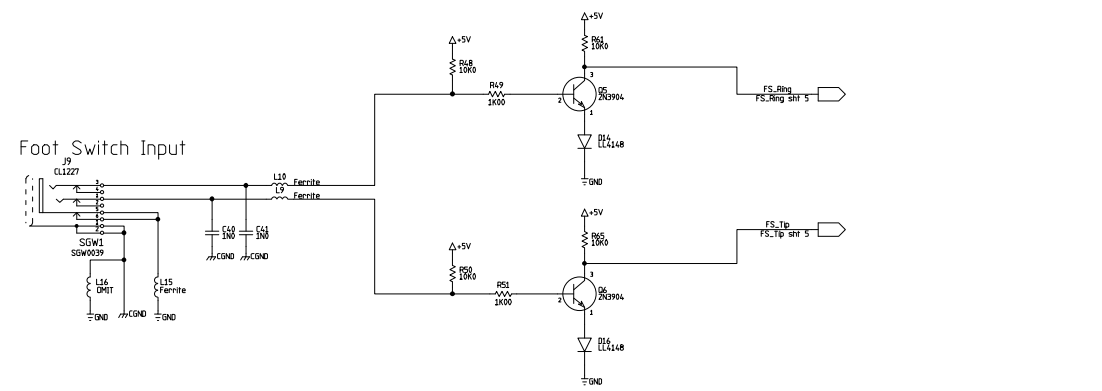
Line Input



AUX Input



Foot Switch Input

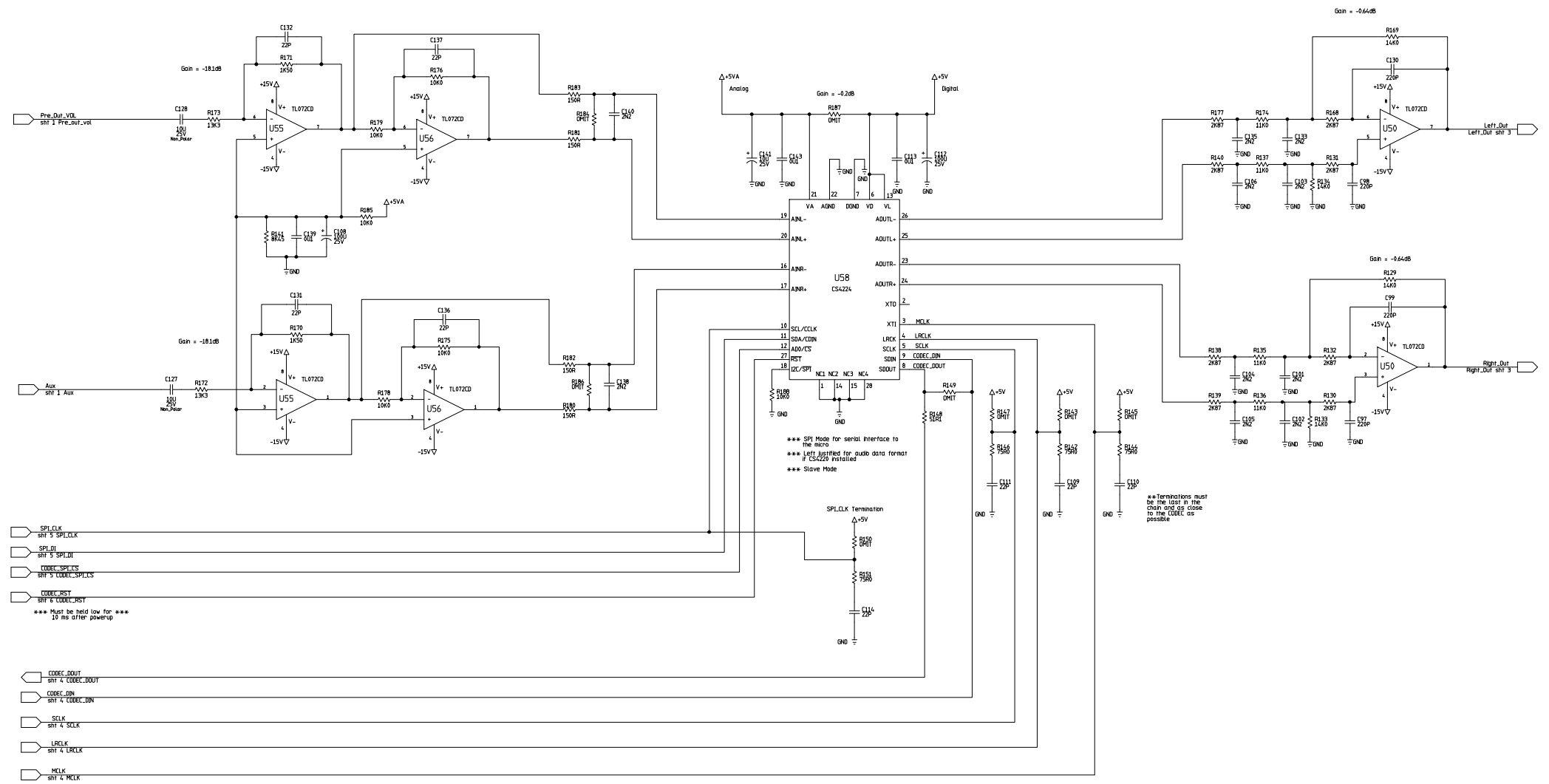


IVL Technologies Ltd.

VMX Main PWB
PDC0147

SIZE	DWG. NO.	MAJ.	MIN.	VAR.
D	266-50	D	03	
SCALE:	NTS	DRAWN:	TWR	930656 31/07/2000
			SHEET=	01

REVISIONS			
REV	DESCRIPTION	DATE	APPROVED



- SPL_CLK SH 5 SPL_CLK
- SPL_DI SH 5 SPL_DI
- CODEC_SPL_CS SH 5 CODEC_SPL_CS
- CODEC_RST SH 6 CODEC_RST
*** Must be held low for ***
10 ms after powerup
- CODEC_OUT SH 4 CODEC_OUT
- CODEC_DIN SH 4 CODEC_DIN
- SCLK SH 4 SCLK
- LRLCLK SH 4 LRLCLK
- MCLK SH 4 MCLK

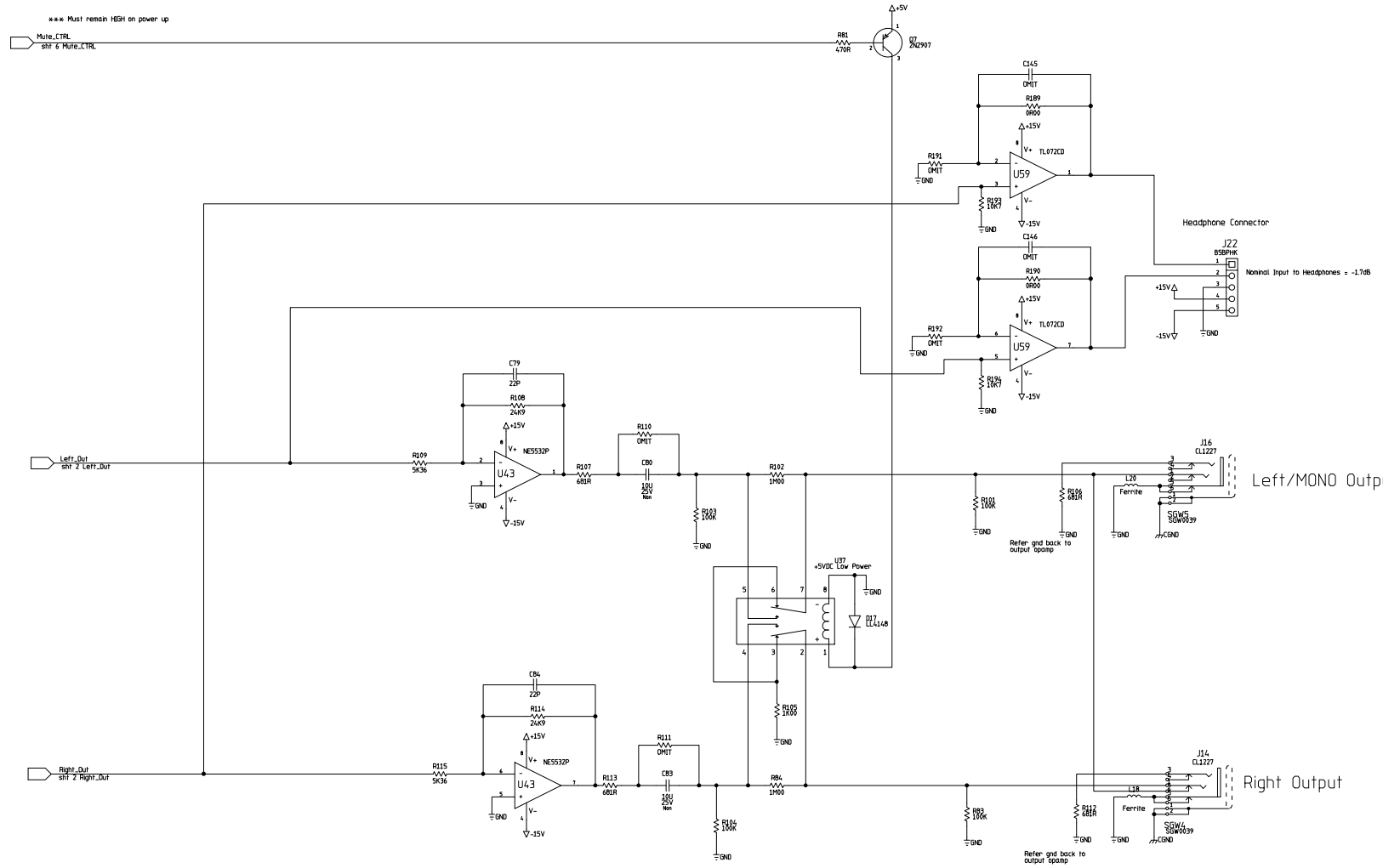
IVL Technologies Ltd.

VMX Main PWB
PDC0147

SIZE	DWG. NO.	266-50	MAJ	MIN	VAR.
D			D	03	
SCALE: NTS	DRAWN:	TWR	9306/96 12/17/2000	SHEET=	02

REVISIONS			
REV	DESCRIPTION	DATE	APPROVED

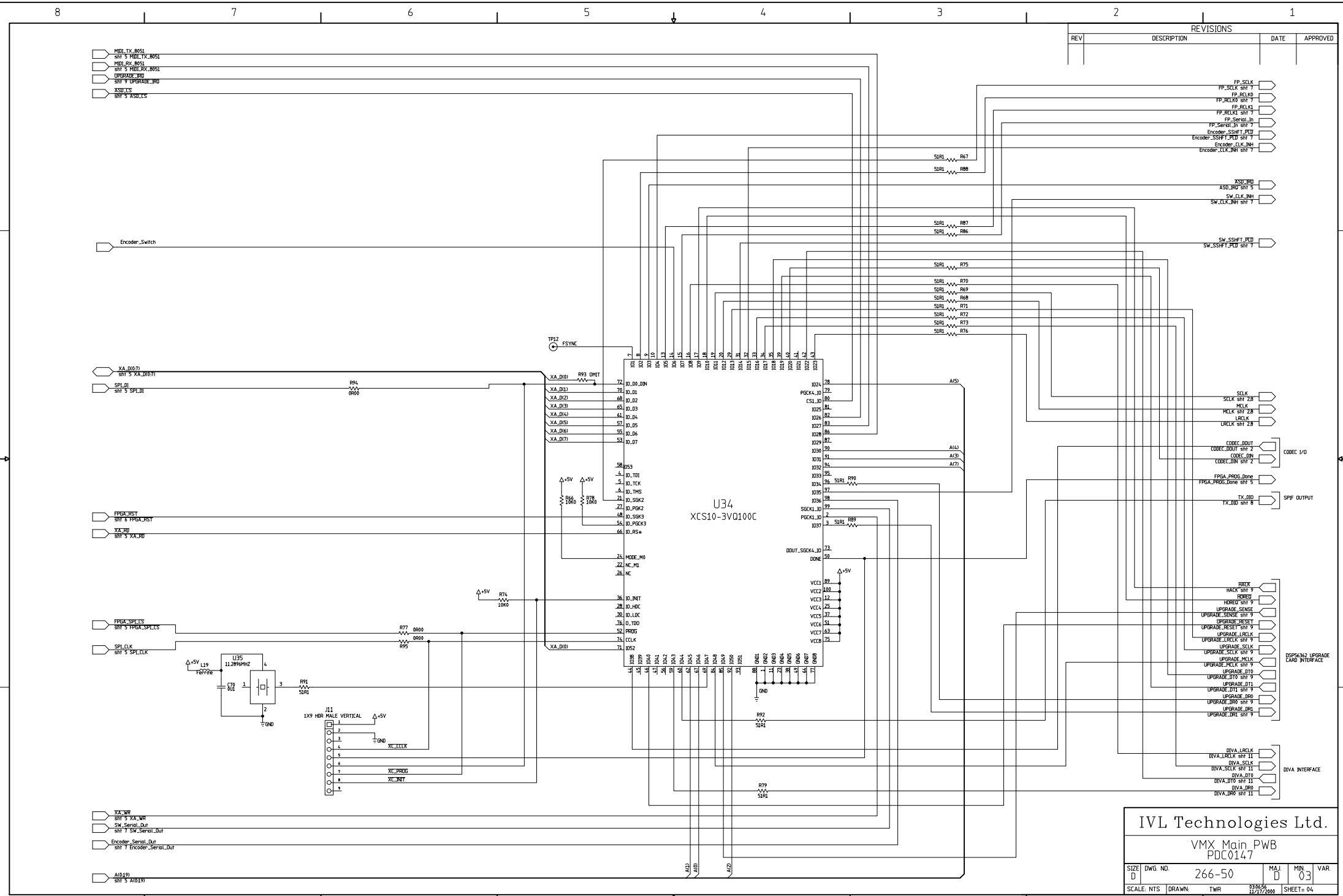
*** Must remain HIGH on power up
 Mute_CTRL
 SHIF 6 MUTE_CTRL



IVL Technologies Ltd.

VMX Main PWB
 PDC0147

SIZE	DWG. NO.	MAJ	MIN	VAR.
D	266-50	D	03	
SCALE: NTS	DRAWN: TWR	930656 12/17/2000		SHEET= 03

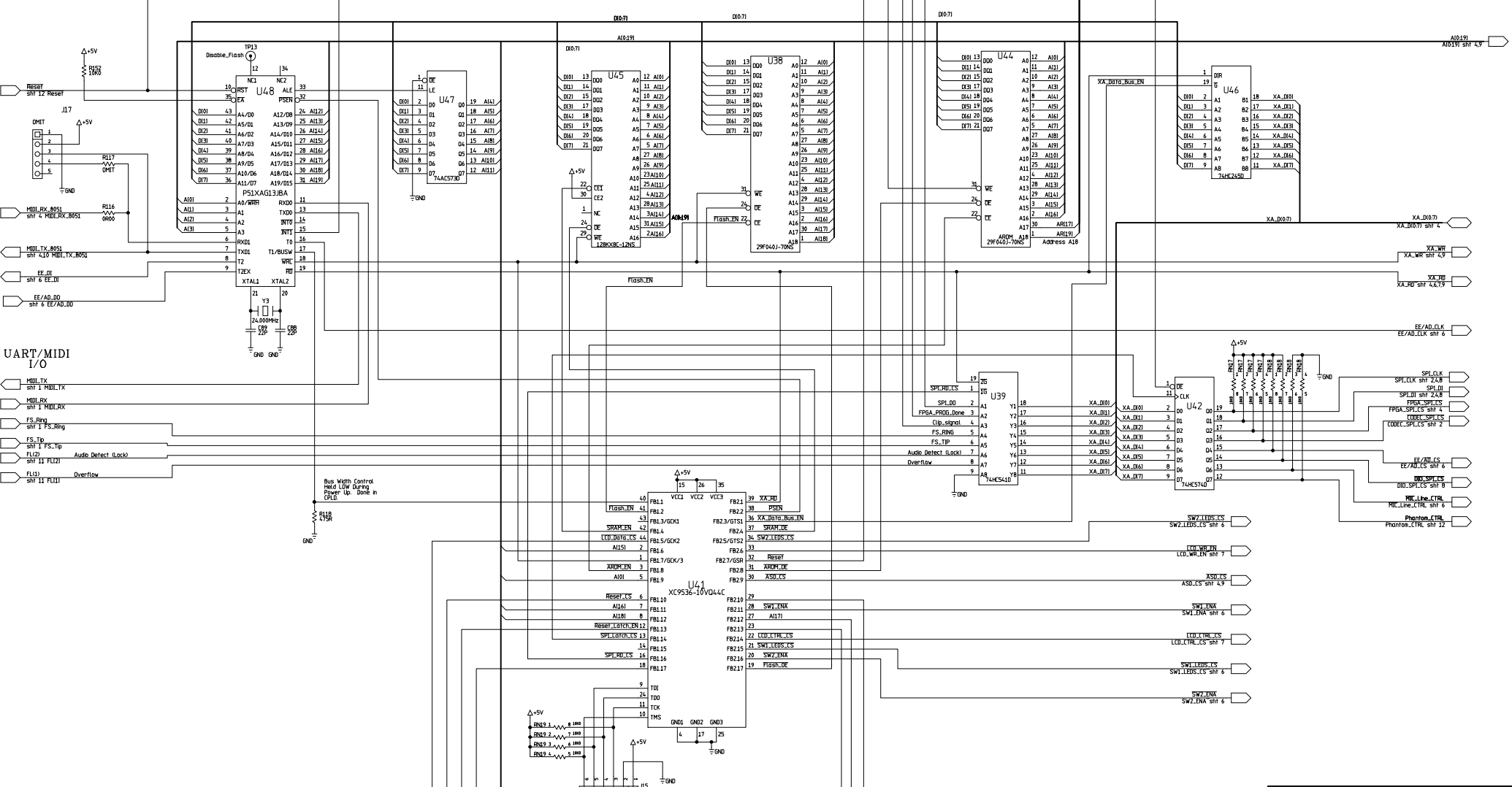


REVISIONS			
REV	DESCRIPTION	DATE	APPROVED

IVL Technologies Ltd.					
VMX Main PWB PDC0147					
SIZE	DWG. NO.	M.A.J.	MIN	VAR.	
D	266-50	D	3		
SCALE: NTS	DRAWN: TWR	930656 10/17/2000		SHEET= 04	

- SPLITATCH_EN SH1 6 SPLITATCH_EN
- ARI17191 SH1 7 ARI17191
- SPL_DO SH1 8 SPL_DO
- FPGA_PROG_Done SH1 4 FPGA_PROG_Done
- Clp_Signal SH1 6 Clp_Signal
- ASD_IRQ SH1 4 ASD_IRQ

REVISIONS			
REV	DESCRIPTION	DATE	APPROVED



- MIDI_RX_B051 SH1 4 MIDI_RX_B051
- MIDI_TX_B051 SH1 4 MIDI_TX_B051
- EE_DI SH1 6 EE_DI
- EE/AD_DO SH1 6 EE/AD_DO
- UART/MIDI I/O
- MIDI_TX SH1 1 MIDI_TX
- MIDI_RX SH1 1 MIDI_RX
- FS_Ring SH1 2 FS_Ring
- FS_Tip SH1 2 FS_Tip
- FL_C0 SH1 11 FL_C0
- FL_C1 SH1 11 FL_C1

- REP_BUFFER SH1 7
- RESET_LATCH_EN SH1 6
- RESET_CS SH1 6
- LED_DRIVE_CS SH1 7

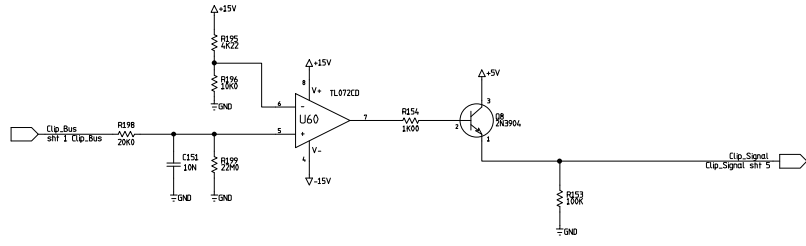
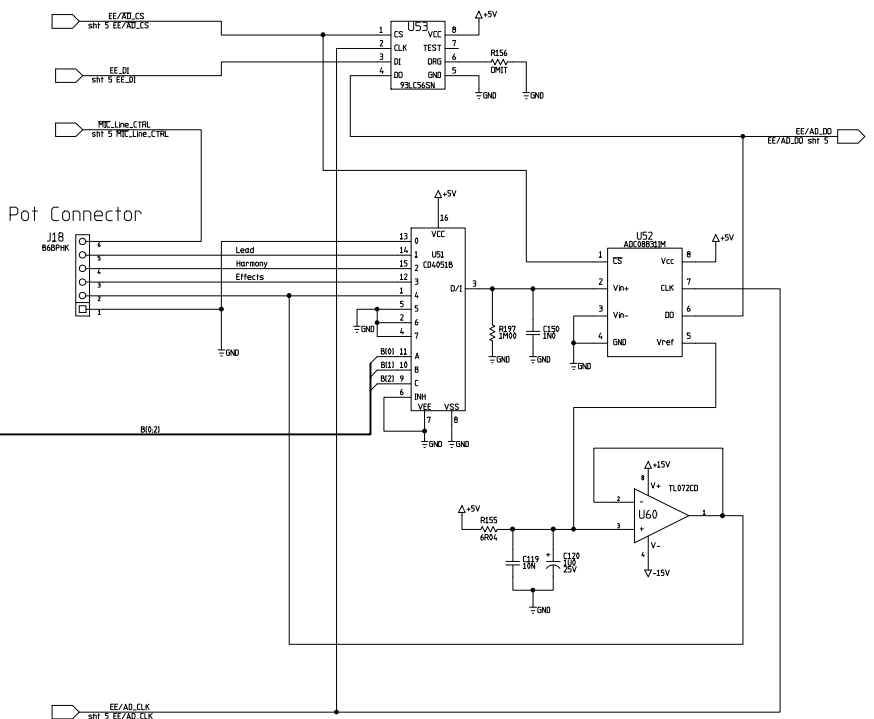
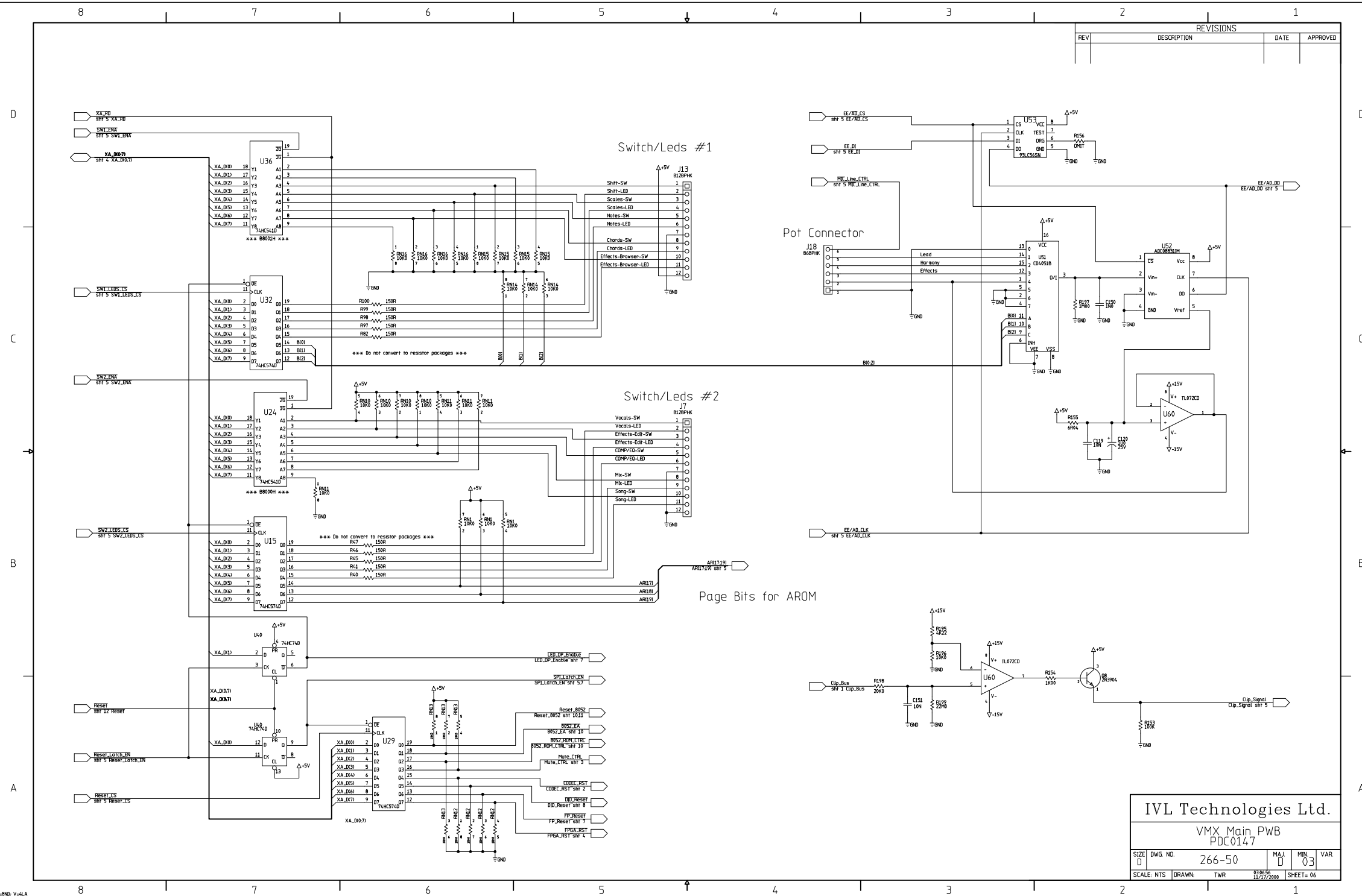
IVL Technologies Ltd.

VMX Main PWB
PDC0147

SIZE	DWG. NO.	MAJ.	MIN.	VAR.
D	266-50	D	03	

SCALE: NTS DRAWN: TWR 09/06/06 11/27/2006 SHEET: 05

REVISIONS			
REV	DESCRIPTION	DATE	APPROVED

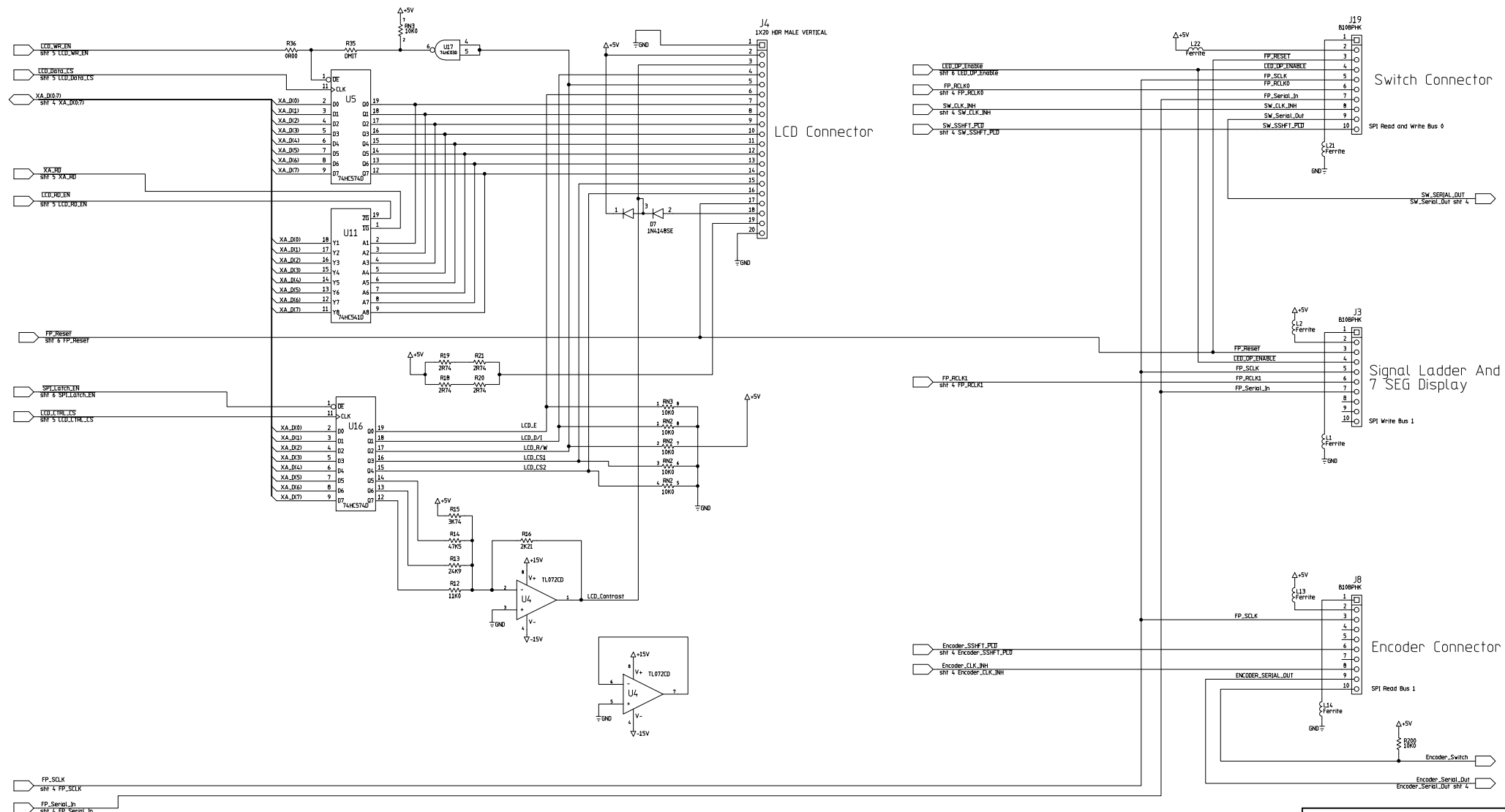


IVL Technologies Ltd.

VMX_Main_PWB
PDC0147

SIZE	DWG. NO.	MAJ	MIN	VAR.
D	266-50	D	03	
SCALE:	NTS	DRAWN:	TWR	930656 12/17/2000
				SHEET= 06

REVISIONS			
REV	DESCRIPTION	DATE	APPROVED

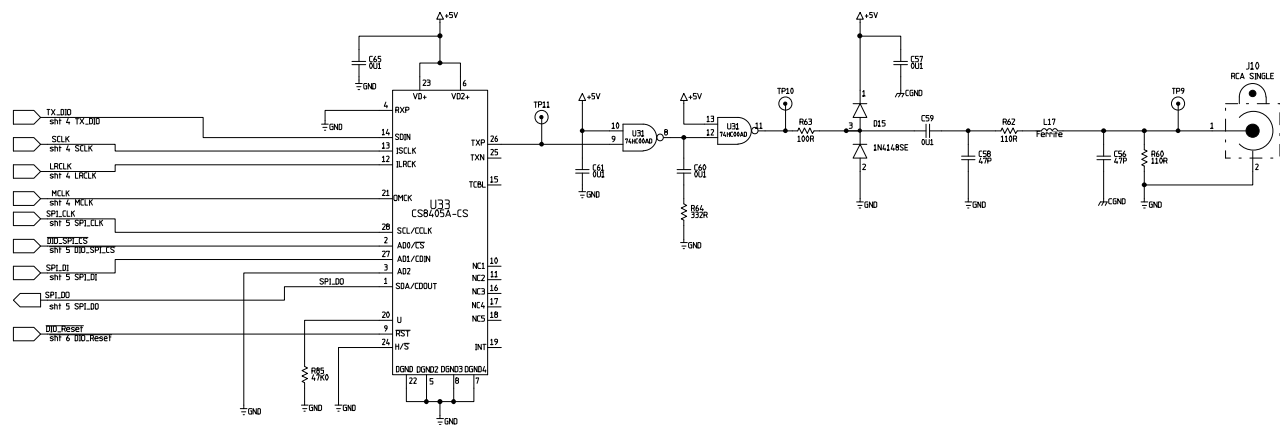


IVL Technologies Ltd.

VMX Main PWB
PDC0147

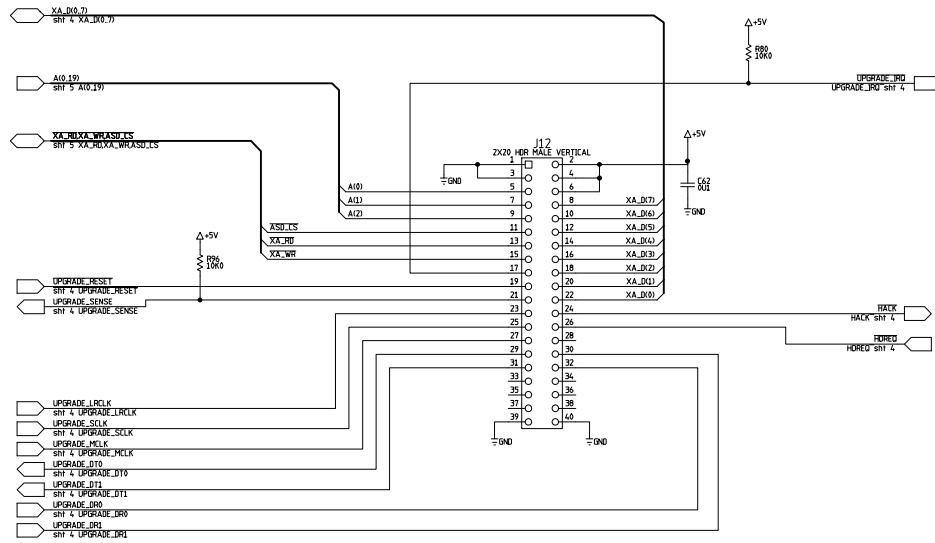
SIZE	DWG. NO.	MAJ.	MIN.	VAR.
D	266-50	D	03	
SCALE: NTS	DRAWN: TWR	930656	12/17/2000	SHEET= 07

REVISIONS			
REV	DESCRIPTION	DATE	APPROVED



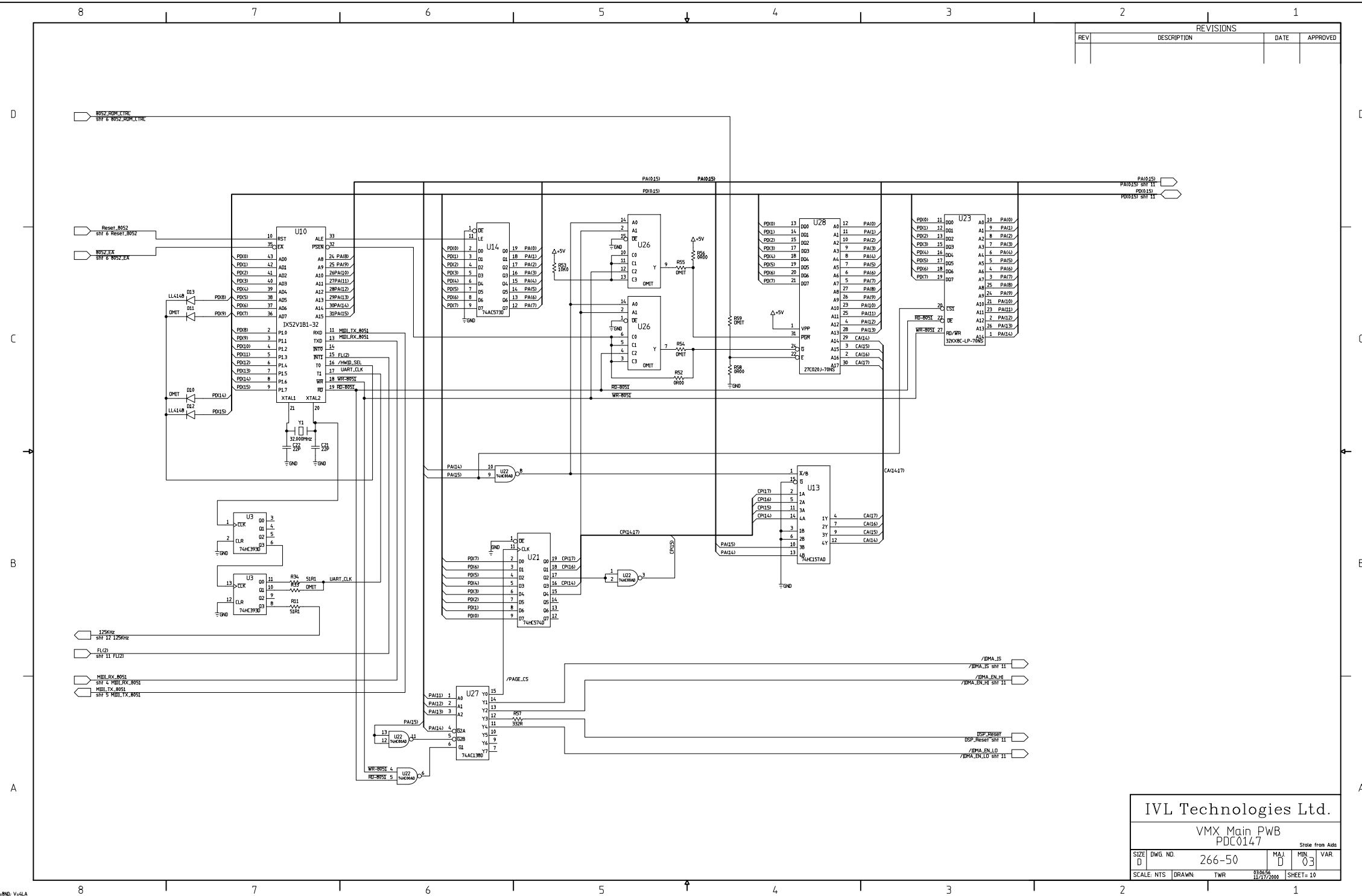
IVL Technologies Ltd.			
VMX Main PWB			
PDC0147 Digital I/O			
SIZE	DWG. NO.	MAJ	MIN
D	266-50	D	03
SCALE: NTS	DRAWN: GPJ	930656 12/17/2000	SHEET= 08

REVISIONS			
REV	DESCRIPTION	DATE	APPROVED



IVL Technologies Ltd.					
VMX Main PWB					
PDC0147					
SIZE	DWG. NO.	266-50	MAJ	MIN	VAR.
D			D	03	
SCALE: NTS	DRAWN:	TWR	930656	12/17/2000	SHEET= 09

REVISIONS			
REV	DESCRIPTION	DATE	APPROVED



IVL Technologies Ltd.

VMX Main PWB
PDC0147

Scale: NTS | Drawn: TWR | 930656 | 12/17/2000 | SHEET=10

SIZE	DWG. NO.	266-50	MAJ	MIN	VAR.
D			0	3	

8

7

6

5

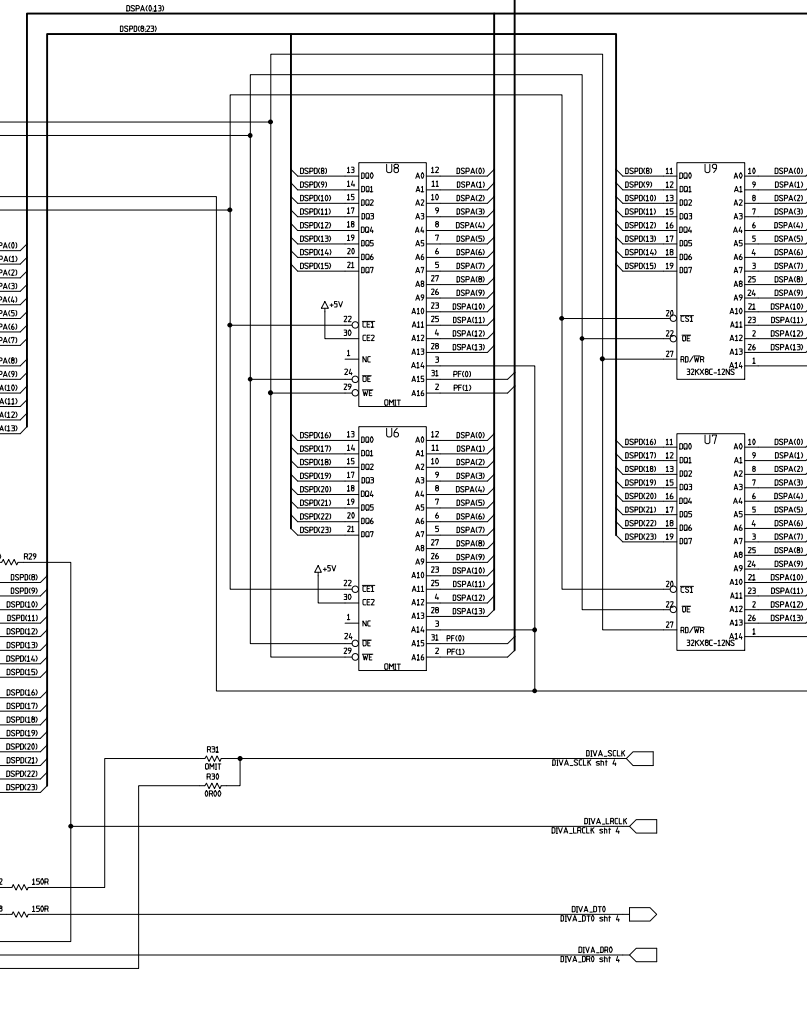
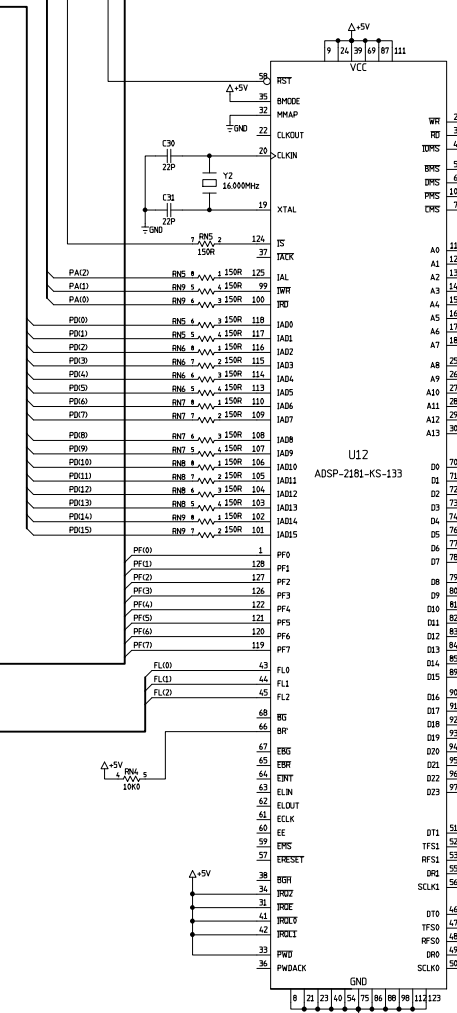
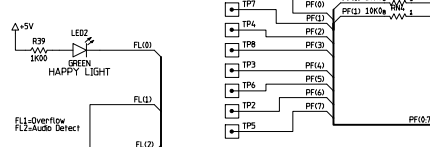
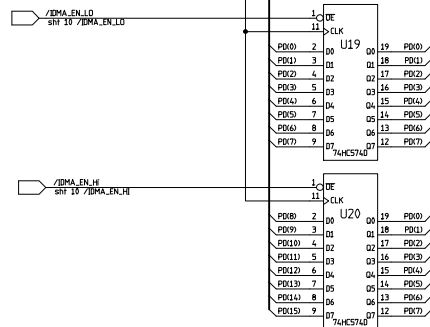
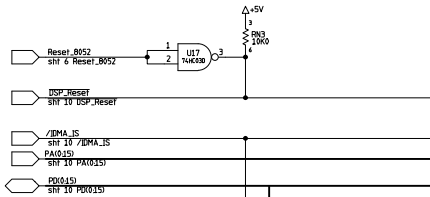
4

3

2

1

REVISIONS			
REV	DESCRIPTION	DATE	APPROVED



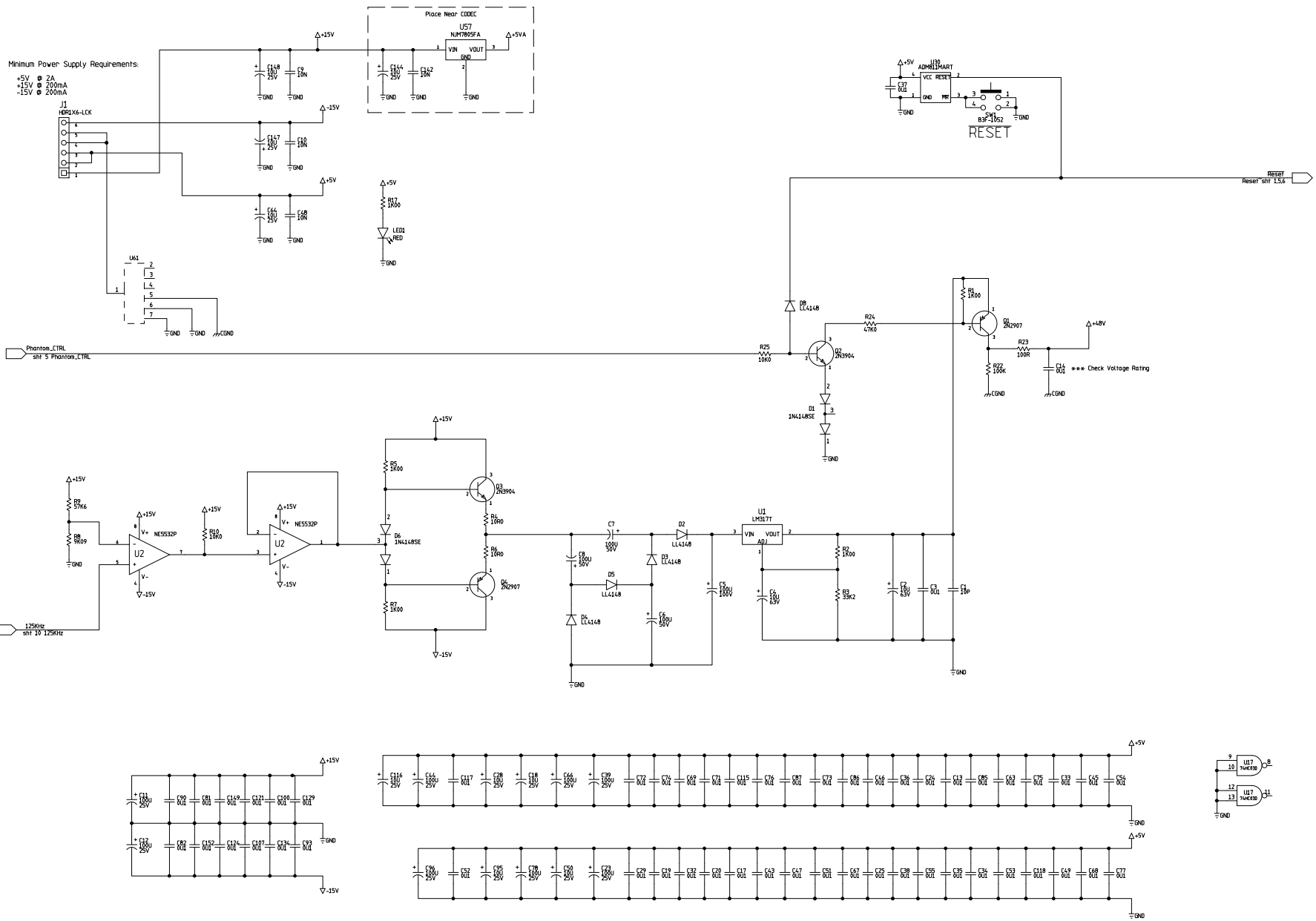
IVL Technologies Ltd.

VMX Main PWB
PDC0147

SIZE	DWG. NO.	MAJ.	MIN.	VAR.
D	266-50	D	03	

SCALE: NTS | DRAWN: TWR | SHEET=11

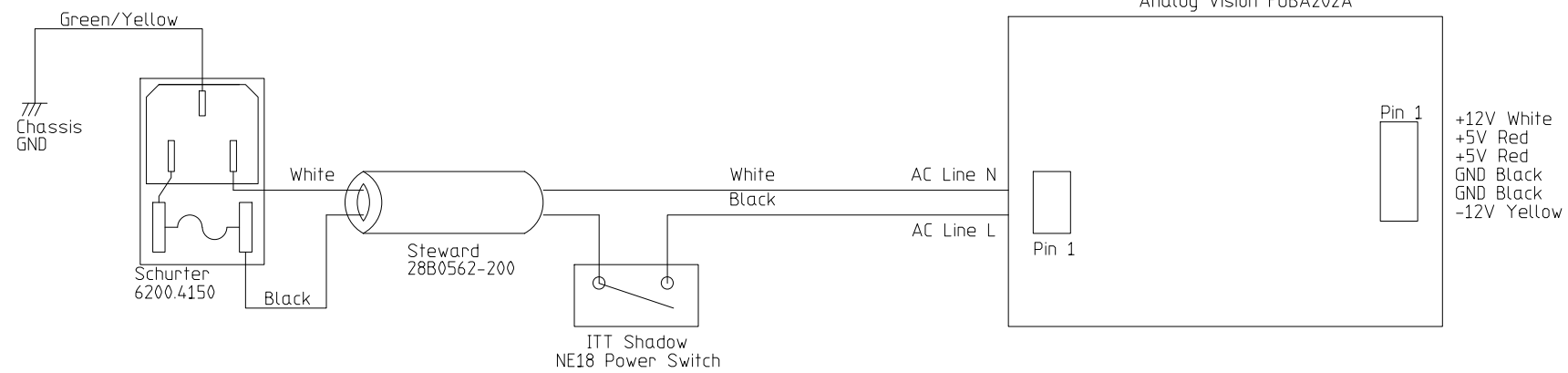
REVISIONS			
REV	DESCRIPTION	DATE	APPROVED



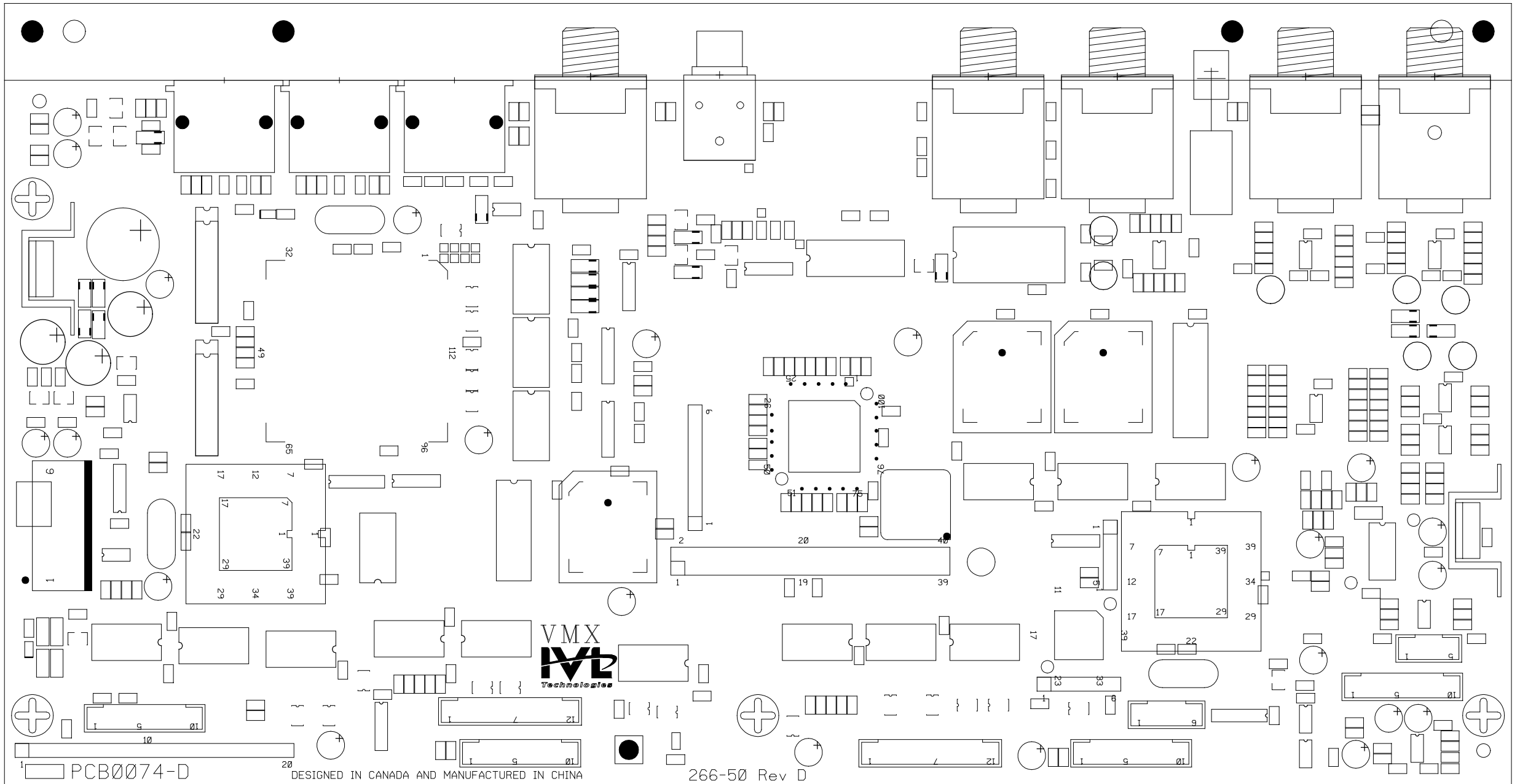
IVL Technologies Ltd.
 VMX Main PWB

SIZE	DWG. NO.	266-50	MAJ	MIN	VAR.
D			D	3	
SCALE: NTS	DRAWN:	TWR	930656	12/17/2000	SHEET= 12

100/120 VAC 50/60 Hz FUSE= 400mA 250v Slow Blow
 220/240 VAC 50/60 Hz FUSE = T200mA 250V



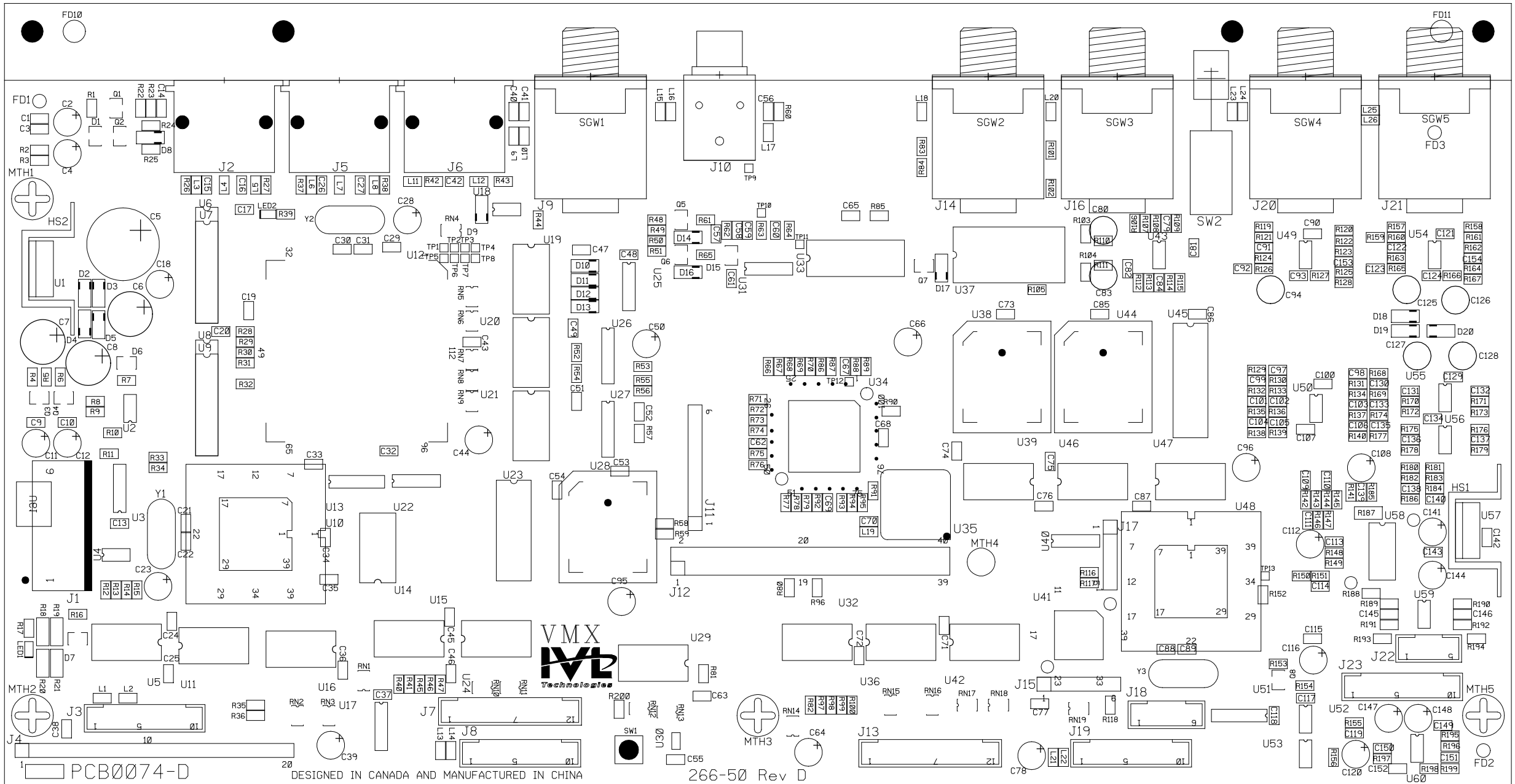
IVL Technologies Ltd.					
VMX Main PWB Power Supply					
SIZE	DWG. NO.	PRODUCT NO.	MAJ.	MIN.	
D	266-50	PDC0126	D	03	
SCALE: NTS	DRAWN: GPJ	DATE: 11/27/2006	SHEET# 13		



PCB0074-D

DESIGNED IN CANADA AND MANUFACTURED IN CHINA

266-50 Rev D



PCB0074-D

DESIGNED IN CANADA AND MANUFACTURED IN CHINA

266-50 Rev D

Bill of Materials

6710 Bertram Place
 Victoria, BC
 Canada V8M 1Z6
 TEL 250 544 4091
 FAX 250 544 4100
 www.iml.com



Job Name :PDC0147-D03 VoicePrism Main

Extraction Date: 11/17/00 03:19:13

Item	Side	Comp Type	Ref	Value	Description	Visual Part:
1	TOP	DISCRETE	SGW1	SGW0039	Ground Washer CL14422 for Cliff 1/4" Jack CL1227	SGW0039
2	TOP	DISCRETE	SGW2	SGW0039	Ground Washer CL14422 for Cliff 1/4" Jack CL1227	SGW0039
3	TOP	DISCRETE	SGW3	SGW0039	Ground Washer CL14422 for Cliff 1/4" Jack CL1227	SGW0039
4	TOP	DISCRETE	SGW4	SGW0039	Ground Washer CL14422 for Cliff 1/4" Jack CL1227	SGW0039
5	TOP	DISCRETE	SGW5	SGW0039	Ground Washer CL14422 for Cliff 1/4" Jack CL1227	SGW0039
6	TOP	SMD	C1	10P	CAP,CHIP,0805,10%,50V,X7R	CPS0032
7	TOP	SMD	C10	10N	CAP,CHIP,0805,10%,50V,X7R	CPS0002
8	TOP	SMD	C100	0U1	CAP,CHIP,0805,10%,50V,X7R	CPS0001
9	TOP	SMD	C101	2N2	CAP,CHIP,0805,10%,50V,X7R	CPS0005
10	TOP	SMD	C102	2N2	CAP,CHIP,0805,10%,50V,X7R	CPS0005
11	TOP	SMD	C103	2N2	CAP,CHIP,0805,10%,50V,X7R	CPS0005
12	TOP	SMD	C104	2N2	CAP,CHIP,0805,10%,50V,X7R	CPS0005
13	TOP	SMD	C105	2N2	CAP,CHIP,0805,10%,50V,X7R	CPS0005
14	TOP	SMD	C106	2N2	CAP,CHIP,0805,10%,50V,X7R	CPS0005
15	TOP	SMD	C107	0U1	CAP,CHIP,0805,10%,50V,X7R	CPS0001
16	TOP	SMD	C109	22P	CAP,CHIP,0805,10%,50V,X7R	CPS0004
17	TOP	SMD	C110	22P	CAP,CHIP,0805,10%,50V,X7R	CPS0004
18	TOP	SMD	C111	22P	CAP,CHIP,0805,10%,50V,X7R	CPS0004
19	TOP	SMD	C113	0U1	CAP,CHIP,0805,10%,50V,X7R	CPS0001
20	TOP	SMD	C114	22P	CAP,CHIP,0805,10%,50V,X7R	CPS0004
21	TOP	SMD	C115	0U1	CAP,CHIP,0805,10%,50V,X7R	CPS0001
22	TOP	SMD	C117	0U1	CAP,CHIP,0805,10%,50V,X7R	CPS0001
23	TOP	SMD	C118	0U1	CAP,CHIP,0805,10%,50V,X7R	CPS0001
24	TOP	SMD	C119	10N	CAP,CHIP,0805,10%,50V,X7R	CPS0002
25	TOP	SMD	C121	0U1	CAP,CHIP,0805,10%,50V,X7R	CPS0001
26	TOP	SMD	C122	22P	CAP,CHIP,0805,10%,50V,X7R	CPS0004
27	TOP	SMD	C123	680P	CAP,CHIP,0805,10%,50V,X7R	CPS0028
28	TOP	SMD	C124	0U1	CAP,CHIP,0805,10%,50V,X7R	CPS0001
29	TOP	SMD	C129	0U1	CAP,CHIP,0805,10%,50V,X7R	CPS0001
30	TOP	SMD	C13	0U1	CAP,CHIP,0805,10%,50V,X7R	CPS0001
31	TOP	SMD	C130	220P	CAP,CHIP,0805,10%,50V,X7R	CPS0045
32	TOP	SMD	C131	22P	CAP,CHIP,0805,10%,50V,X7R	CPS0004
33	TOP	SMD	C132	22P	CAP,CHIP,0805,10%,50V,X7R	CPS0004
34	TOP	SMD	C133	2N2	CAP,CHIP,0805,10%,50V,X7R	CPS0005
35	TOP	SMD	C134	0U1	CAP,CHIP,0805,10%,50V,X7R	CPS0001
36	TOP	SMD	C135	2N2	CAP,CHIP,0805,10%,50V,X7R	CPS0005
37	TOP	SMD	C136	22P	CAP,CHIP,0805,10%,50V,X7R	CPS0004
38	TOP	SMD	C137	22P	CAP,CHIP,0805,10%,50V,X7R	CPS0004
39	TOP	SMD	C138	2N2	CAP,CHIP,0805,10%,50V,X7R	CPS0005
40	TOP	SMD	C139	0U1	CAP,CHIP,0805,10%,50V,X7R	CPS0001
41	TOP	SMD	C14	0U1	CAP,CHIP,0805,10%,50V,X7R	CPS0001
42	TOP	SMD	C140	2N2	CAP,CHIP,0805,10%,50V,X7R	CPS0005
43	TOP	SMD	C142	10N	CAP,CHIP,0805,10%,50V,X7R	CPS0002
44	TOP	SMD	C143	0U1	CAP,CHIP,0805,10%,50V,X7R	CPS0001
45	TOP	SMD	C145	OMIT	OMIT,CAP,CHIP,0805,10%,50V,X7R	OMIT-CM08
46	TOP	SMD	C146	OMIT	OMIT,CAP,CHIP,0805,10%,50V,X7R	OMIT-CM08
47	TOP	SMD	C149	0U1	CAP,CHIP,0805,10%,50V,X7R	CPS0001
48	TOP	SMD	C15	1N0	CAP,CHIP,0805,10%,50V,X7R	CPS0003
49	TOP	SMD	C150	1N0	CAP,CHIP,0805,10%,50V,X7R	CPS0003
50	TOP	SMD	C151	10N	CAP,CHIP,0805,10%,50V,X7R	CPS0002
51	TOP	SMD	C152	0U1	CAP,CHIP,0805,10%,50V,X7R	CPS0001
52	TOP	SMD	C153	22P	CAP,CHIP,0805,10%,50V,X7R	CPS0004
53	TOP	SMD	C154	22P	CAP,CHIP,0805,10%,50V,X7R	CPS0004
54	TOP	SMD	C16	1N0	CAP,CHIP,0805,10%,50V,X7R	CPS0003
55	TOP	SMD	C17	0U1	CAP,CHIP,0805,10%,50V,X7R	CPS0001
56	TOP	SMD	C19	0U1	CAP,CHIP,0805,10%,50V,X7R	CPS0001
57	TOP	SMD	C20	0U1	CAP,CHIP,0805,10%,50V,X7R	CPS0001
58	TOP	SMD	C21	22P	CAP,CHIP,0805,10%,50V,X7R	CPS0004
59	TOP	SMD	C22	22P	CAP,CHIP,0805,10%,50V,X7R	CPS0004
60	TOP	SMD	C24	0U1	CAP,CHIP,0805,10%,50V,X7R	CPS0001
61	TOP	SMD	C25	0U1	CAP,CHIP,0805,10%,50V,X7R	CPS0001
62	TOP	SMD	C26	1N0	CAP,CHIP,0805,10%,50V,X7R	CPS0003
63	TOP	SMD	C27	1N0	CAP,CHIP,0805,10%,50V,X7R	CPS0003
64	TOP	SMD	C29	0U1	CAP,CHIP,0805,10%,50V,X7R	CPS0001
65	TOP	SMD	C3	0U1	CAP,CHIP,0805,10%,50V,X7R	CPS0001
66	TOP	SMD	C30	22P	CAP,CHIP,0805,10%,50V,X7R	CPS0004
67	TOP	SMD	C31	22P	CAP,CHIP,0805,10%,50V,X7R	CPS0004
68	TOP	SMD	C32	0U1	CAP,CHIP,0805,10%,50V,X7R	CPS0001
69	TOP	SMD	C33	0U1	CAP,CHIP,0805,10%,50V,X7R	CPS0001
70	TOP	SMD	C34	0U1	CAP,CHIP,0805,10%,50V,X7R	CPS0001
71	TOP	SMD	C35	0U1	CAP,CHIP,0805,10%,50V,X7R	CPS0001
72	TOP	SMD	C36	0U1	CAP,CHIP,0805,10%,50V,X7R	CPS0001

Bill of Materials

6710 Bertram Place
 Victoria, BC
 Canada V8M 1Z6
 TEL 250 544 4091
 FAX 250 544 4100
 www.im.com



Job Name :PDC0147-D03 VoicePrism Main

Extraction Date: 11/17/00 03:19:13

Item	Side	Comp Type	Ref	Value	Description	Visual Part:
73	TOP	SMD	C37	0U1	CAP,CHIP,0805,10%,50V,X7R	CPS0001
74	TOP	SMD	C38	0U1	CAP,CHIP,0805,10%,50V,X7R	CPS0001
75	TOP	SMD	C40	1N0	CAP,CHIP,0805,10%,50V,X7R	CPS0003
76	TOP	SMD	C41	1N0	CAP,CHIP,0805,10%,50V,X7R	CPS0003
77	TOP	SMD	C42	0U1	CAP,CHIP,0805,10%,50V,X7R	CPS0001
78	TOP	SMD	C43	0U1	CAP,CHIP,0805,10%,50V,X7R	CPS0001
79	TOP	SMD	C45	0U1	CAP,CHIP,0805,10%,50V,X7R	CPS0001
80	TOP	SMD	C46	0U1	CAP,CHIP,0805,10%,50V,X7R	CPS0001
81	TOP	SMD	C47	0U1	CAP,CHIP,0805,10%,50V,X7R	CPS0001
82	TOP	SMD	C48	10N	CAP,CHIP,0805,10%,50V,X7R	CPS0002
83	TOP	SMD	C49	0U1	CAP,CHIP,0805,10%,50V,X7R	CPS0001
84	TOP	SMD	C51	0U1	CAP,CHIP,0805,10%,50V,X7R	CPS0001
85	TOP	SMD	C52	0U1	CAP,CHIP,0805,10%,50V,X7R	CPS0001
86	TOP	SMD	C53	0U1	CAP,CHIP,0805,10%,50V,X7R	CPS0001
87	TOP	SMD	C54	0U1	CAP,CHIP,0805,10%,50V,X7R	CPS0001
88	TOP	SMD	C55	0U1	CAP,CHIP,0805,10%,50V,X7R	CPS0001
89	TOP	SMD	C56	47P	CAP,CHIP,0805,10%,50V,X7R	CPS0035
90	TOP	SMD	C57	0U1	CAP,CHIP,0805,10%,50V,X7R	CPS0001
91	TOP	SMD	C58	47P	CAP,CHIP,0805,10%,50V,X7R	CPS0035
92	TOP	SMD	C59	0U1	CAP,CHIP,0805,10%,50V,X7R	CPS0001
93	TOP	SMD	C60	0U1	CAP,CHIP,0805,10%,50V,X7R	CPS0001
94	TOP	SMD	C61	0U1	CAP,CHIP,0805,10%,50V,X7R	CPS0001
95	TOP	SMD	C62	0U1	CAP,CHIP,0805,10%,50V,X7R	CPS0001
96	TOP	SMD	C63	0U1	CAP,CHIP,0805,10%,50V,X7R	CPS0001
97	TOP	SMD	C65	0U1	CAP,CHIP,0805,10%,50V,X7R	CPS0001
98	TOP	SMD	C67	0U1	CAP,CHIP,0805,10%,50V,X7R	CPS0001
99	TOP	SMD	C68	0U1	CAP,CHIP,0805,10%,50V,X7R	CPS0001
100	TOP	SMD	C69	0U1	CAP,CHIP,0805,10%,50V,X7R	CPS0001
101	TOP	SMD	C70	0U1	CAP,CHIP,0805,10%,50V,X7R	CPS0001
102	TOP	SMD	C71	0U1	CAP,CHIP,0805,10%,50V,X7R	CPS0001
103	TOP	SMD	C72	0U1	CAP,CHIP,0805,10%,50V,X7R	CPS0001
104	TOP	SMD	C73	0U1	CAP,CHIP,0805,10%,50V,X7R	CPS0001
105	TOP	SMD	C74	0U1	CAP,CHIP,0805,10%,50V,X7R	CPS0001
106	TOP	SMD	C75	0U1	CAP,CHIP,0805,10%,50V,X7R	CPS0001
107	TOP	SMD	C76	0U1	CAP,CHIP,0805,10%,50V,X7R	CPS0001
108	TOP	SMD	C77	0U1	CAP,CHIP,0805,10%,50V,X7R	CPS0001
109	TOP	SMD	C79	22P	CAP,CHIP,0805,10%,50V,X7R	CPS0004
110	TOP	SMD	C81	0U1	CAP,CHIP,0805,10%,50V,X7R	CPS0001
111	TOP	SMD	C82	0U1	CAP,CHIP,0805,10%,50V,X7R	CPS0001
112	TOP	SMD	C84	22P	CAP,CHIP,0805,10%,50V,X7R	CPS0004
113	TOP	SMD	C85	0U1	CAP,CHIP,0805,10%,50V,X7R	CPS0001
114	TOP	SMD	C86	0U1	CAP,CHIP,0805,10%,50V,X7R	CPS0001
115	TOP	SMD	C87	0U1	CAP,CHIP,0805,10%,50V,X7R	CPS0001
116	TOP	SMD	C88	22P	CAP,CHIP,0805,10%,50V,X7R	CPS0004
117	TOP	SMD	C89	22P	CAP,CHIP,0805,10%,50V,X7R	CPS0004
118	TOP	SMD	C9	10N	CAP,CHIP,0805,10%,50V,X7R	CPS0002
119	TOP	SMD	C90	0U1	CAP,CHIP,0805,10%,50V,X7R	CPS0001
120	TOP	SMD	C91	22P	CAP,CHIP,0805,10%,50V,X7R	CPS0004
121	TOP	SMD	C92	680P	CAP,CHIP,0805,10%,50V,X7R	CPS0028
122	TOP	SMD	C93	0U1	CAP,CHIP,0805,10%,50V,X7R	CPS0001
123	TOP	SMD	C97	220P	CAP,CHIP,0805,10%,50V,X7R	CPS0045
124	TOP	SMD	C98	220P	CAP,CHIP,0805,10%,50V,X7R	CPS0045
125	TOP	SMD	C99	220P	CAP,CHIP,0805,10%,50V,X7R	CPS0045
126	TOP	SMD	D1	1N4148SE	Dual 1N4148 Switching Diode, SOT23	DDS0006
127	TOP	SMD	D10	OMIT	OMIT, LL4148 MiniMELF Switching Diode	OMIT-D-1N:
128	TOP	SMD	D11	OMIT	OMIT, LL4148 MiniMELF Switching Diode	OMIT-D-1N:
129	TOP	SMD	D12	LL4148	LL4148 MiniMELF Switching Diode	DDS0010
130	TOP	SMD	D13	LL4148	LL4148 MiniMELF Switching Diode	DDS0010
131	TOP	SMD	D14	LL4148	LL4148 MiniMELF Switching Diode	DDS0010
132	TOP	SMD	D15	1N4148SE	Dual 1N4148 Switching Diode, SOT23	DDS0006
133	TOP	SMD	D16	LL4148	LL4148 MiniMELF Switching Diode	DDS0010
134	TOP	SMD	D17	LL4148	LL4148 MiniMELF Switching Diode	DDS0010
135	TOP	SMD	D18	LL4148	LL4148 MiniMELF Switching Diode	DDS0010
136	TOP	SMD	D19	LL4148	LL4148 MiniMELF Switching Diode	DDS0010
137	TOP	SMD	D2	LL4148	LL4148 MiniMELF Switching Diode	DDS0010
138	TOP	SMD	D20	LL4148	LL4148 MiniMELF Switching Diode	DDS0010
139	TOP	SMD	D3	LL4148	LL4148 MiniMELF Switching Diode	DDS0010
140	TOP	SMD	D4	LL4148	LL4148 MiniMELF Switching Diode	DDS0010
141	TOP	SMD	D5	LL4148	LL4148 MiniMELF Switching Diode	DDS0010
142	TOP	SMD	D6	1N4148SE	Dual 1N4148 Switching Diode, SOT23	DDS0006
143	TOP	SMD	D7	1N4148SE	Dual 1N4148 Switching Diode, SOT23	DDS0006
144	TOP	SMD	D8	LL4148	LL4148 MiniMELF Switching Diode	DDS0010

Bill of Materials

6710 Bertram Place
 Victoria, BC
 Canada V8M 1Z6
 TEL 250 544 4091
 FAX 250 544 4100
 www.im.com



Job Name :PDC0147-D03 VoicePrism Main

Extraction Date: 11/17/00 03:19:13

Item	Side	Comp Type	Ref	Value	Description	Visual Part:
145	TOP	SMD	D9	LL4148	LL4148 MiniMELF Switching Diode	DDS0010
146	TOP	SMD	L1	Ferrite	FERRITE BEAD, 600R, 0805 SMD	INS0001
147	TOP	SMD	L10	Ferrite	FERRITE BEAD, 600R, 0805 SMD	INS0001
148	TOP	SMD	L11	Ferrite	FERRITE BEAD, 600R, 0805 SMD	INS0001
149	TOP	SMD	L12	Ferrite	FERRITE BEAD, 600R, 0805 SMD	INS0001
150	TOP	SMD	L13	Ferrite	FERRITE BEAD, 600R, 0805 SMD	INS0001
151	TOP	SMD	L14	Ferrite	FERRITE BEAD, 600R, 0805 SMD	INS0001
152	TOP	SMD	L15	Ferrite	FERRITE BEAD, 600R, 0805 SMD	INS0001
153	TOP	SMD	L16	OMIT	OMIT FERRITE BEAD, 0805 SMD	OMIT-L0805
154	TOP	SMD	L17	Ferrite	FERRITE BEAD, 600R, 0805 SMD	INS0001
155	TOP	SMD	L18	Ferrite	FERRITE BEAD, 600R, 0805 SMD	INS0001
156	TOP	SMD	L19	Ferrite	FERRITE BEAD, 600R, 0805 SMD	INS0001
157	TOP	SMD	L2	Ferrite	FERRITE BEAD, 600R, 0805 SMD	INS0001
158	TOP	SMD	L20	Ferrite	FERRITE BEAD, 600R, 0805 SMD	INS0001
159	TOP	SMD	L21	Ferrite	FERRITE BEAD, 600R, 0805 SMD	INS0001
160	TOP	SMD	L22	Ferrite	FERRITE BEAD, 600R, 0805 SMD	INS0001
161	TOP	SMD	L23	OMIT	OMIT FERRITE BEAD, 0805 SMD	OMIT-L0805
162	TOP	SMD	L24	Ferrite	FERRITE BEAD, 600R, 0805 SMD	INS0001
163	TOP	SMD	L25	OMIT	OMIT FERRITE BEAD, 0805 SMD	OMIT-L0805
164	TOP	SMD	L26	Ferrite	FERRITE BEAD, 600R, 0805 SMD	INS0001
165	TOP	SMD	L3	Ferrite	FERRITE BEAD, 600R, 0805 SMD	INS0001
166	TOP	SMD	L4	Ferrite	FERRITE BEAD, 600R, 0805 SMD	INS0001
167	TOP	SMD	L5	Ferrite	FERRITE BEAD, 600R, 0805 SMD	INS0001
168	TOP	SMD	L6	Ferrite	FERRITE BEAD, 600R, 0805 SMD	INS0001
169	TOP	SMD	L7	Ferrite	FERRITE BEAD, 600R, 0805 SMD	INS0001
170	TOP	SMD	L8	Ferrite	FERRITE BEAD, 600R, 0805 SMD	INS0001
171	TOP	SMD	L9	Ferrite	FERRITE BEAD, 600R, 0805 SMD	INS0001
172	TOP	SMD	LED1	RED	RED,LED,CHIP,0603	LDS0002
173	TOP	SMD	LED2	GREEN	GREEN,LED,CHIP,0603	LDS0001
174	TOP	SMD	Q1	2N2907	2N2907 PNP Transistor, SOT 23	TRS0001
175	TOP	SMD	Q2	2N3904	2N3904 NPN Transistor, SOT23	TRS0002
176	TOP	SMD	Q3	2N3904	2N3904 NPN Transistor, SOT23	TRS0002
177	TOP	SMD	Q4	2N2907	2N2907 PNP Transistor, SOT 23	TRS0001
178	TOP	SMD	Q5	2N3904	2N3904 NPN Transistor, SOT23	TRS0002
179	TOP	SMD	Q6	2N3904	2N3904 NPN Transistor, SOT23	TRS0002
180	TOP	SMD	Q7	2N2907	2N2907 PNP Transistor, SOT 23	TRS0001
181	TOP	SMD	Q8	2N3904	2N3904 NPN Transistor, SOT23	TRS0002
182	TOP	SMD	R1	1K00	RES,CHIP,0805,1%,METAL-FILM	RSS0007
183	TOP	SMD	R10	10K0	RES,CHIP,0805,1%,METAL-FILM	RSS0002
184	TOP	SMD	R100	150R	RES,CHIP,0805,1%,METAL-FILM	RSS0004
185	TOP	SMD	R101	100K	RES,CHIP,0805,1%,METAL-FILM	RSS0096
186	TOP	SMD	R102	1M00	RES,CHIP,0805,1%,METAL-FILM	RSS0008
187	TOP	SMD	R103	100K	RES,CHIP,0805,1%,METAL-FILM	RSS0096
188	TOP	SMD	R104	100K	RES,CHIP,0805,1%,METAL-FILM	RSS0096
189	TOP	SMD	R105	1K00	RES,CHIP,0805,1%,METAL-FILM	RSS0007
190	TOP	SMD	R106	681R	RES,CHIP,0805,1%,METAL-FILM	RSS0012
191	TOP	SMD	R107	681R	RES,CHIP,0805,1%,METAL-FILM	RSS0012
192	TOP	SMD	R108	24K9	RES,CHIP,0805,1%,METAL-FILM	RSS0114
193	TOP	SMD	R109	5K36	RES,CHIP,0805,1%,METAL-FILM	RSS0135
194	TOP	SMD	R11	51R1	RES,CHIP,0805,1%,METAL-FILM	RSS0148
195	TOP	SMD	R110	OMIT	OMIT,RES,CHIP,0805,1%,METAL-FILM	OMIT-RM08
196	TOP	SMD	R111	OMIT	OMIT,RES,CHIP,0805,1%,METAL-FILM	OMIT-RM08
197	TOP	SMD	R112	681R	RES,CHIP,0805,1%,METAL-FILM	RSS0012
198	TOP	SMD	R113	681R	RES,CHIP,0805,1%,METAL-FILM	RSS0012
199	TOP	SMD	R114	24K9	RES,CHIP,0805,1%,METAL-FILM	RSS0114
200	TOP	SMD	R115	5K36	RES,CHIP,0805,1%,METAL-FILM	RSS0135
201	TOP	SMD	R116	0R00	RES,CHIP,0805,1%,METAL-FILM	RSS0037
202	TOP	SMD	R117	OMIT	OMIT,RES,CHIP,0805,1%,METAL-FILM	OMIT-RM08
203	TOP	SMD	R118	475R	RES,CHIP,0805,1%,METAL-FILM	RSS0087
204	TOP	SMD	R119	100K	RES,CHIP,0805,1%,METAL-FILM	RSS0096
205	TOP	SMD	R12	11K0	RES,CHIP,0805,1%,METAL-FILM	RSS0098
206	TOP	SMD	R120	100K	RES,CHIP,0805,1%,METAL-FILM	RSS0096
207	TOP	SMD	R121	24K9	RES,CHIP,0805,1%,METAL-FILM	RSS0114
208	TOP	SMD	R122	20K0	RES,CHIP,0805,1%,METAL-FILM	RSS0109
209	TOP	SMD	R123	20K0	RES,CHIP,0805,1%,METAL-FILM	RSS0109
210	TOP	SMD	R124	15K0	RES,CHIP,0805,1%,METAL-FILM	RSS0005
211	TOP	SMD	R125	20K0	RES,CHIP,0805,1%,METAL-FILM	RSS0109
212	TOP	SMD	R126	9K09	RES,CHIP,0805,1%,METAL-FILM	RSS0200
213	TOP	SMD	R127	20K0	RES,CHIP,0805,1%,METAL-FILM	RSS0109
214	TOP	SMD	R128	100K	RES,CHIP,0805,1%,METAL-FILM	RSS0096
215	TOP	SMD	R129	14K0	RES,CHIP,0805,1%,METAL-FILM	RSS0202
216	TOP	SMD	R13	24K9	RES,CHIP,0805,1%,METAL-FILM	RSS0114

Bill of Materials

6710 Bertram Place
Victoria, BC
Canada V8M 1Z6
TEL 250 544 4091
FAX 250 544 4100
www.im.com



Job Name :PDC0147-D03 VoicePrism Main

Extraction Date: 11/17/00 03:19:13

<u>Item</u>	<u>Side</u>	<u>Comp Type</u>	<u>Ref</u>	<u>Value</u>	<u>Description</u>	<u>Visual Part:</u>
217	TOP	SMD	R130	2K87	RES,CHIP,0805,1%,METAL-FILM	RSS0119
218	TOP	SMD	R131	2K87	RES,CHIP,0805,1%,METAL-FILM	RSS0119
219	TOP	SMD	R132	2K87	RES,CHIP,0805,1%,METAL-FILM	RSS0119
220	TOP	SMD	R133	14K0	RES,CHIP,0805,1%,METAL-FILM	RSS0202
221	TOP	SMD	R134	14K0	RES,CHIP,0805,1%,METAL-FILM	RSS0202
222	TOP	SMD	R135	11K0	RES,CHIP,0805,1%,METAL-FILM	RSS0098
223	TOP	SMD	R136	11K0	RES,CHIP,0805,1%,METAL-FILM	RSS0098
224	TOP	SMD	R137	11K0	RES,CHIP,0805,1%,METAL-FILM	RSS0098
225	TOP	SMD	R138	2K87	RES,CHIP,0805,1%,METAL-FILM	RSS0119
226	TOP	SMD	R139	2K87	RES,CHIP,0805,1%,METAL-FILM	RSS0119
227	TOP	SMD	R14	47K5	RES,CHIP,0805,1%,METAL-FILM	RSS0129
228	TOP	SMD	R140	2K87	RES,CHIP,0805,1%,METAL-FILM	RSS0119
229	TOP	SMD	R141	8K45	RES,CHIP,0805,1%,METAL-FILM	RSS0204
230	TOP	SMD	R142	75R0	RES,CHIP,0805,1%,METAL-FILM	RSS0089
231	TOP	SMD	R143	OMIT	OMIT,RES,CHIP,0805,1%,METAL-FILM	OMIT-RM08
232	TOP	SMD	R144	75R0	RES,CHIP,0805,1%,METAL-FILM	RSS0089
233	TOP	SMD	R145	OMIT	OMIT,RES,CHIP,0805,1%,METAL-FILM	OMIT-RM08
234	TOP	SMD	R146	75R0	RES,CHIP,0805,1%,METAL-FILM	RSS0089
235	TOP	SMD	R147	OMIT	OMIT,RES,CHIP,0805,1%,METAL-FILM	OMIT-RM08
236	TOP	SMD	R148	51R1	RES,CHIP,0805,1%,METAL-FILM	RSS0148
237	TOP	SMD	R149	OMIT	OMIT,RES,CHIP,0805,1%,METAL-FILM	OMIT-RM08
238	TOP	SMD	R15	3K74	RES,CHIP,0805,1%,METAL-FILM	RSS0160
239	TOP	SMD	R150	OMIT	OMIT,RES,CHIP,0805,1%,METAL-FILM	OMIT-RM08
240	TOP	SMD	R151	75R0	RES,CHIP,0805,1%,METAL-FILM	RSS0089
241	TOP	SMD	R152	10K0	RES,CHIP,0805,1%,METAL-FILM	RSS0002
242	TOP	SMD	R153	100K	RES,CHIP,0805,1%,METAL-FILM	RSS0096
243	TOP	SMD	R154	1K00	RES,CHIP,0805,1%,METAL-FILM	RSS0007
244	TOP	SMD	R155	6R04	RES,CHIP,0805,1%,METAL-FILM	RSS0142
245	TOP	SMD	R156	OMIT	OMIT,RES,CHIP,0805,1%,METAL-FILM	OMIT-RM08
246	TOP	SMD	R157	100K	RES,CHIP,0805,1%,METAL-FILM	RSS0096
247	TOP	SMD	R158	100K	RES,CHIP,0805,1%,METAL-FILM	RSS0096
248	TOP	SMD	R159	100K	RES,CHIP,0805,1%,METAL-FILM	RSS0096
249	TOP	SMD	R16	2K21	RES,CHIP,0805,1%,METAL-FILM	RSS0093
250	TOP	SMD	R160	24K9	RES,CHIP,0805,1%,METAL-FILM	RSS0114
251	TOP	SMD	R161	20K0	RES,CHIP,0805,1%,METAL-FILM	RSS0109
252	TOP	SMD	R162	20K0	RES,CHIP,0805,1%,METAL-FILM	RSS0109
253	TOP	SMD	R163	15K0	RES,CHIP,0805,1%,METAL-FILM	RSS0005
254	TOP	SMD	R164	20K0	RES,CHIP,0805,1%,METAL-FILM	RSS0109
255	TOP	SMD	R165	9K09	RES,CHIP,0805,1%,METAL-FILM	RSS0200
256	TOP	SMD	R166	20K0	RES,CHIP,0805,1%,METAL-FILM	RSS0109
257	TOP	SMD	R167	100K	RES,CHIP,0805,1%,METAL-FILM	RSS0096
258	TOP	SMD	R168	2K87	RES,CHIP,0805,1%,METAL-FILM	RSS0119
259	TOP	SMD	R169	14K0	RES,CHIP,0805,1%,METAL-FILM	RSS0202
260	TOP	SMD	R17	1K00	RES,CHIP,0805,1%,METAL-FILM	RSS0007
261	TOP	SMD	R170	1K50	RES,CHIP,0805,1%,METAL-FILM	RSS0177
262	TOP	SMD	R171	1K50	RES,CHIP,0805,1%,METAL-FILM	RSS0177
263	TOP	SMD	R172	13K3	RES,CHIP,0805,1%,METAL-FILM	RSS0101
264	TOP	SMD	R173	13K3	RES,CHIP,0805,1%,METAL-FILM	RSS0101
265	TOP	SMD	R174	11K0	RES,CHIP,0805,1%,METAL-FILM	RSS0098
266	TOP	SMD	R175	10K0	RES,CHIP,0805,1%,METAL-FILM	RSS0002
267	TOP	SMD	R176	10K0	RES,CHIP,0805,1%,METAL-FILM	RSS0002
268	TOP	SMD	R177	2K87	RES,CHIP,0805,1%,METAL-FILM	RSS0119
269	TOP	SMD	R178	10K0	RES,CHIP,0805,1%,METAL-FILM	RSS0002
270	TOP	SMD	R179	10K0	RES,CHIP,0805,1%,METAL-FILM	RSS0002
271	TOP	SMD	R18	2R74	RES,CHIP,1206,1%,METAL-FILM	RSS0208
272	TOP	SMD	R180	150R	RES,CHIP,0805,1%,METAL-FILM	RSS0004
273	TOP	SMD	R181	150R	RES,CHIP,0805,1%,METAL-FILM	RSS0004
274	TOP	SMD	R182	150R	RES,CHIP,0805,1%,METAL-FILM	RSS0004
275	TOP	SMD	R183	150R	RES,CHIP,0805,1%,METAL-FILM	RSS0004
276	TOP	SMD	R184	OMIT	OMIT,RES,CHIP,0805,1%,METAL-FILM	OMIT-RM08
277	TOP	SMD	R185	10K0	RES,CHIP,0805,1%,METAL-FILM	RSS0002
278	TOP	SMD	R186	OMIT	OMIT,RES,CHIP,0805,1%,METAL-FILM	OMIT-RM08
279	TOP	SMD	R187	OMIT	RES,CHIP,1206,1%,METAL-FILM	OMIT-RM12
280	TOP	SMD	R188	10K0	RES,CHIP,0805,1%,METAL-FILM	RSS0002
281	TOP	SMD	R189	0R00	RES,CHIP,0805,1%,METAL-FILM	RSS0037
282	TOP	SMD	R19	2R74	RES,CHIP,1206,1%,METAL-FILM	RSS0208
283	TOP	SMD	R190	0R00	RES,CHIP,0805,1%,METAL-FILM	RSS0037
284	TOP	SMD	R191	OMIT	OMIT,RES,CHIP,0805,1%,METAL-FILM	OMIT-RM08
285	TOP	SMD	R192	OMIT	OMIT,RES,CHIP,0805,1%,METAL-FILM	OMIT-RM08
286	TOP	SMD	R193	10K7	RES,CHIP,0805,1%,METAL-FILM	RSS0149
287	TOP	SMD	R194	10K7	RES,CHIP,0805,1%,METAL-FILM	RSS0149
288	TOP	SMD	R195	4K22	RES,CHIP,0805,1%,METAL-FILM	RSS0186

Bill of Materials

6710 Bertram Place
 Victoria, BC
 Canada V8M 1Z6
 TEL 250 544 4091
 FAX 250 544 4100
 www.iml.com



Job Name :PDC0147-D03 VoicePrism Main

Extraction Date: 11/17/00 03:19:13

Item	Side	Comp Type	Ref	Value	Description	Visual Part:
289	TOP	SMD	R196	10K0	RES,CHIP,0805,1%,METAL-FILM	RSS0002
290	TOP	SMD	R197	1M00	RES,CHIP,0805,1%,METAL-FILM	RSS0008
291	TOP	SMD	R198	20K0	RES,CHIP,0805,1%,METAL-FILM	RSS0109
292	TOP	SMD	R199	22M0	RES,CHIP,0805,1%,METAL-FILM	RSS0113
293	TOP	SMD	R2	1K00	RES,CHIP,0805,1%,METAL-FILM	RSS0007
294	TOP	SMD	R20	2R74	RES,CHIP,1206,1%,METAL-FILM	RSS0208
295	TOP	SMD	R200	10K0	RES,CHIP,0805,1%,METAL-FILM	RSS0002
296	TOP	SMD	R21	2R74	RES,CHIP,1206,1%,METAL-FILM	RSS0208
297	TOP	SMD	R22	100K	RES,CHIP,0805,1%,METAL-FILM	RSS0096
298	TOP	SMD	R23	100R	RES,CHIP,0805,1%,METAL-FILM	RSS0001
299	TOP	SMD	R24	47K0	RES,CHIP,0805,1%,METAL-FILM	RSS0179
300	TOP	SMD	R25	10K0	RES,CHIP,0805,1%,METAL-FILM	RSS0002
301	TOP	SMD	R26	221R	RES,CHIP,0805,1%,METAL-FILM	RSS0090
302	TOP	SMD	R27	221R	RES,CHIP,0805,1%,METAL-FILM	RSS0090
303	TOP	SMD	R28	150R	RES,CHIP,0805,1%,METAL-FILM	RSS0004
304	TOP	SMD	R29	10K0	RES,CHIP,0805,1%,METAL-FILM	RSS0002
305	TOP	SMD	R3	33K2	RES,CHIP,0805,1%,METAL-FILM	RSS0122
306	TOP	SMD	R30	0R00	RES,CHIP,0805,1%,METAL-FILM	RSS0037
307	TOP	SMD	R31	OMIT	OMIT,RES,CHIP,0805,1%,METAL-FILM	OMIT-RM08
308	TOP	SMD	R32	150R	RES,CHIP,0805,1%,METAL-FILM	RSS0004
309	TOP	SMD	R33	OMIT	OMIT,RES,CHIP,0805,1%,METAL-FILM	OMIT-RM08
310	TOP	SMD	R34	51R1	RES,CHIP,0805,1%,METAL-FILM	RSS0148
311	TOP	SMD	R35	OMIT	OMIT,RES,CHIP,0805,1%,METAL-FILM	OMIT-RM08
312	TOP	SMD	R36	0R00	RES,CHIP,0805,1%,METAL-FILM	RSS0037
313	TOP	SMD	R37	221R	RES,CHIP,0805,1%,METAL-FILM	RSS0090
314	TOP	SMD	R38	221R	RES,CHIP,0805,1%,METAL-FILM	RSS0090
315	TOP	SMD	R39	1K00	RES,CHIP,0805,1%,METAL-FILM	RSS0007
316	TOP	SMD	R4	10R0	RES,CHIP,0805,1%,METAL-FILM	RSS0188
317	TOP	SMD	R40	150R	RES,CHIP,0805,1%,METAL-FILM	RSS0004
318	TOP	SMD	R41	150R	RES,CHIP,0805,1%,METAL-FILM	RSS0004
319	TOP	SMD	R42	221R	RES,CHIP,0805,1%,METAL-FILM	RSS0090
320	TOP	SMD	R43	3K32	RES,CHIP,0805,1%,METAL-FILM	RSS0125
321	TOP	SMD	R44	475R	RES,CHIP,0805,1%,METAL-FILM	RSS0087
322	TOP	SMD	R45	150R	RES,CHIP,0805,1%,METAL-FILM	RSS0004
323	TOP	SMD	R46	150R	RES,CHIP,0805,1%,METAL-FILM	RSS0004
324	TOP	SMD	R47	150R	RES,CHIP,0805,1%,METAL-FILM	RSS0004
325	TOP	SMD	R48	10K0	RES,CHIP,0805,1%,METAL-FILM	RSS0002
326	TOP	SMD	R49	1K00	RES,CHIP,0805,1%,METAL-FILM	RSS0007
327	TOP	SMD	R5	1K00	RES,CHIP,0805,1%,METAL-FILM	RSS0007
328	TOP	SMD	R50	10K0	RES,CHIP,0805,1%,METAL-FILM	RSS0002
329	TOP	SMD	R51	1K00	RES,CHIP,0805,1%,METAL-FILM	RSS0007
330	TOP	SMD	R52	0R00	RES,CHIP,0805,1%,METAL-FILM	RSS0037
331	TOP	SMD	R53	10K0	RES,CHIP,0805,1%,METAL-FILM	RSS0002
332	TOP	SMD	R54	OMIT	OMIT,RES,CHIP,0805,1%,METAL-FILM	OMIT-RM08
333	TOP	SMD	R55	OMIT	OMIT,RES,CHIP,0805,1%,METAL-FILM	OMIT-RM08
334	TOP	SMD	R56	0R00	RES,CHIP,0805,1%,METAL-FILM	RSS0037
335	TOP	SMD	R57	332R	RES,CHIP,0805,1%,METAL-FILM	RSS0086
336	TOP	SMD	R58	0R00	RES,CHIP,0805,1%,METAL-FILM	RSS0037
337	TOP	SMD	R59	OMIT	OMIT,RES,CHIP,0805,1%,METAL-FILM	OMIT-RM08
338	TOP	SMD	R6	10R0	RES,CHIP,0805,1%,METAL-FILM	RSS0188
339	TOP	SMD	R60	110R	RES,CHIP,0805,1%,METAL-FILM	RSS0167
340	TOP	SMD	R61	10K0	RES,CHIP,0805,1%,METAL-FILM	RSS0002
341	TOP	SMD	R62	110R	RES,CHIP,0805,1%,METAL-FILM	RSS0167
342	TOP	SMD	R63	100R	RES,CHIP,0805,1%,METAL-FILM	RSS0001
343	TOP	SMD	R64	332R	RES,CHIP,0805,1%,METAL-FILM	RSS0086
344	TOP	SMD	R65	10K0	RES,CHIP,0805,1%,METAL-FILM	RSS0002
345	TOP	SMD	R66	10K0	RES,CHIP,0805,1%,METAL-FILM	RSS0002
346	TOP	SMD	R67	51R1	RES,CHIP,0805,1%,METAL-FILM	RSS0148
347	TOP	SMD	R68	51R1	RES,CHIP,0805,1%,METAL-FILM	RSS0148
348	TOP	SMD	R69	51R1	RES,CHIP,0805,1%,METAL-FILM	RSS0148
349	TOP	SMD	R7	1K00	RES,CHIP,0805,1%,METAL-FILM	RSS0007
350	TOP	SMD	R70	51R1	RES,CHIP,0805,1%,METAL-FILM	RSS0148
351	TOP	SMD	R71	51R1	RES,CHIP,0805,1%,METAL-FILM	RSS0148
352	TOP	SMD	R72	51R1	RES,CHIP,0805,1%,METAL-FILM	RSS0148
353	TOP	SMD	R73	51R1	RES,CHIP,0805,1%,METAL-FILM	RSS0148
354	TOP	SMD	R74	10K0	RES,CHIP,0805,1%,METAL-FILM	RSS0002
355	TOP	SMD	R75	51R1	RES,CHIP,0805,1%,METAL-FILM	RSS0148
356	TOP	SMD	R76	51R1	RES,CHIP,0805,1%,METAL-FILM	RSS0148
357	TOP	SMD	R77	0R00	RES,CHIP,0805,1%,METAL-FILM	RSS0037
358	TOP	SMD	R78	10K0	RES,CHIP,0805,1%,METAL-FILM	RSS0002
359	TOP	SMD	R79	51R1	RES,CHIP,0805,1%,METAL-FILM	RSS0148
360	TOP	SMD	R8	9K09	RES,CHIP,0805,1%,METAL-FILM	RSS0200

Bill of Materials

6710 Bertram Place
 Victoria, BC
 Canada V8M 1Z6
 TEL 250 544 4091
 FAX 250 544 4100
 www.im.com



Job Name :PDC0147-D03 VoicePrism Main

Extraction Date: 11/17/00 03:19:13

Item	Side	Comp Type	Ref	Value	Description	Visual Part:
361	TOP	SMD	R80	10K0	RES,CHIP,0805,1%,METAL-FILM	RSS0002
362	TOP	SMD	R81	470R	RES,CHIP,0805,1%,METAL-FILM	RSS0175
363	TOP	SMD	R82	150R	RES,CHIP,0805,1%,METAL-FILM	RSS0004
364	TOP	SMD	R83	100K	RES,CHIP,0805,1%,METAL-FILM	RSS0096
365	TOP	SMD	R84	1M00	RES,CHIP,0805,1%,METAL-FILM	RSS0008
366	TOP	SMD	R85	47K0	RES,CHIP,0805,1%,METAL-FILM	RSS0179
367	TOP	SMD	R86	51R1	RES,CHIP,0805,1%,METAL-FILM	RSS0148
368	TOP	SMD	R87	51R1	RES,CHIP,0805,1%,METAL-FILM	RSS0148
369	TOP	SMD	R88	51R1	RES,CHIP,0805,1%,METAL-FILM	RSS0148
370	TOP	SMD	R89	51R1	RES,CHIP,0805,1%,METAL-FILM	RSS0148
371	TOP	SMD	R9	57K6	RES,CHIP,0805,1%,METAL-FILM	RSS0134
372	TOP	SMD	R90	51R1	RES,CHIP,0805,1%,METAL-FILM	RSS0148
373	TOP	SMD	R91	51R1	RES,CHIP,0805,1%,METAL-FILM	RSS0148
374	TOP	SMD	R92	51R1	RES,CHIP,0805,1%,METAL-FILM	RSS0148
375	TOP	SMD	R93	OMIT	OMIT,RES,CHIP,0805,1%,METAL-FILM	OMIT-RM08
376	TOP	SMD	R94	0R00	RES,CHIP,0805,1%,METAL-FILM	RSS0037
377	TOP	SMD	R95	0R00	RES,CHIP,0805,1%,METAL-FILM	RSS0037
378	TOP	SMD	R96	10K0	RES,CHIP,0805,1%,METAL-FILM	RSS0002
379	TOP	SMD	R97	150R	RES,CHIP,0805,1%,METAL-FILM	RSS0004
380	TOP	SMD	R98	150R	RES,CHIP,0805,1%,METAL-FILM	RSS0004
381	TOP	SMD	R99	150R	RES,CHIP,0805,1%,METAL-FILM	RSS0004
382	TOP	SMD	RN1	10K0	RES NETWORK, CHIP, 1206, 5%, CARBON FILM	RSS0182
383	TOP	SMD	RN10	10K0	RES NETWORK, CHIP, 1206, 5%, CARBON FILM	RSS0182
384	TOP	SMD	RN11	10K0	RES NETWORK, CHIP, 1206, 5%, CARBON FILM	RSS0182
385	TOP	SMD	RN12	10K0	RES NETWORK, CHIP, 1206, 5%, CARBON FILM	RSS0182
386	TOP	SMD	RN13	10K0	RES NETWORK, CHIP, 1206, 5%, CARBON FILM	RSS0182
387	TOP	SMD	RN14	10K0	RES NETWORK, CHIP, 1206, 5%, CARBON FILM	RSS0182
388	TOP	SMD	RN15	10K0	RES NETWORK, CHIP, 1206, 5%, CARBON FILM	RSS0182
389	TOP	SMD	RN16	10K0	RES NETWORK, CHIP, 1206, 5%, CARBON FILM	RSS0182
390	TOP	SMD	RN17	10K0	RES NETWORK, CHIP, 1206, 5%, CARBON FILM	RSS0182
391	TOP	SMD	RN18	10K0	RES NETWORK, CHIP, 1206, 5%, CARBON FILM	RSS0182
392	TOP	SMD	RN19	10K0	RES NETWORK, CHIP, 1206, 5%, CARBON FILM	RSS0182
393	TOP	SMD	RN2	10K0	RES NETWORK, CHIP, 1206, 5%, CARBON FILM	RSS0182
394	TOP	SMD	RN3	10K0	RES NETWORK, CHIP, 1206, 5%, CARBON FILM	RSS0182
395	TOP	SMD	RN4	10K0	RES NETWORK, CHIP, 1206, 5%, CARBON FILM	RSS0182
396	TOP	SMD	RN5	150R	RES NETWORK, CHIP, 1206, 5%, CARBON FILM	RSS0157
397	TOP	SMD	RN6	150R	RES NETWORK, CHIP, 1206, 5%, CARBON FILM	RSS0157
398	TOP	SMD	RN7	150R	RES NETWORK, CHIP, 1206, 5%, CARBON FILM	RSS0157
399	TOP	SMD	RN8	150R	RES NETWORK, CHIP, 1206, 5%, CARBON FILM	RSS0157
400	TOP	SMD	RN9	150R	RES NETWORK, CHIP, 1206, 5%, CARBON FILM	RSS0157
401	TOP	SMD	U10	IX52V1B1-32	MROM 80C32, VERSION V1B1, 32MHZ, 44PLCC	ICS0055
402	TOP	SMD	U11	74HC541D	74HC541D, OCTAL 3 STATE BUFFER, SOIC20	ICS0091
403	TOP	SMD	U12	ADSP-2181-KS-133	ADSP-2181-KS-133, 33MHZ DSP, 128QFP	ICS0053
404	TOP	SMD	U13	74HC157AD	74HC157AD, QUAD 2 CHANNEL MUX, SOIC16	ICS0018
405	TOP	SMD	U14	74AC573D	74AC573D, OCTAL 3 STATE TRANSPARENT LATCH, SOIC20	ICS0149
406	TOP	SMD	U15	74HC574D	74HC574D, OCTAL 3 STATE D FF, SOIC20	ICS0089
407	TOP	SMD	U16	74HC574D	74HC574D, OCTAL 3 STATE D FF, SOIC20	ICS0089
408	TOP	SMD	U17	74HC03D	74HC03AD, QUAD 2 INPUT NAND GATE WITH OPEN COLLECTOR OUTPUT	ICS0069
409	TOP	SMD	U18	6N138	6N138 OPTO ISOLATOR ,SOIC8	ICS0128
410	TOP	SMD	U19	74HC574D	74HC574D, OCTAL 3 STATE D FF, SOIC20	ICS0089
411	TOP	SMD	U2	NE5532MP	DUAL J FET OPAMP 8 PIN SOIC8	ICS0172
412	TOP	SMD	U20	74HC574D	74HC574D, OCTAL 3 STATE D FF, SOIC20	ICS0089
413	TOP	SMD	U21	74HC574D	74HC574D, OCTAL 3 STATE D FF, SOIC20	ICS0089
414	TOP	SMD	U22	74HC00AD	74HC00AD, QUAD 2 INPUT NAND GATE, SOIC14	ICS0012
415	TOP	SMD	U23	32KX8C-LP-70NS	32KX8C-LP-70NS, 256K BIT SRAM, 28SOP 450 SPACING	ICS0043
416	TOP	SMD	U24	74HC541D	74HC541D, OCTAL 3 STATE BUFFER, SOIC20	ICS0091
417	TOP	SMD	U25	74HC00AD	74HC00AD, QUAD 2 INPUT NAND GATE, SOIC14	ICS0012
418	TOP	SMD	U26	74VHC153	74VHC153, DUAL 4-CHANNEL MUX	OMIT-74VH
419	TOP	SMD	U27	74AC138D	74AC138D, 1 of 8 DECODER, SOIC16	ICS0011
420	TOP	SMD	U28	27C020J-70NS	256KX8C-70NS 2 MBIT EPROM, 32RECT JLEAD 7X9	ICS0067
421	TOP	SMD	U29	74HC574D	74HC574D, OCTAL 3 STATE D FF, SOIC20	ICS0089
422	TOP	SMD	U3	74HC393D	74HC393D, DUAL BIN COUNTER, SOIC14	ICS0025
423	TOP	SMD	U30	ADM811MART	ADM811MART VOLTAGE MONITOR @ 4.38V WITH SWITCH RESET INPUT	ICS0185
424	TOP	SMD	U31	74HC00AD	74HC00AD, QUAD 2 INPUT NAND GATE, SOIC14	ICS0012
425	TOP	SMD	U32	74HC574D	74HC574D, OCTAL 3 STATE D FF, SOIC20	ICS0089
426	TOP	SMD	U33	CS8405A-CS	CS8405A-CS, AES/EBU Digital Audio Transmitter, SOIC28	ICS0173
427	TOP	SMD	U34	XCS10-3VQ100C	XLINX FPGA, 100 PIN TQFP	ICS0146
428	TOP	SMD	U36	74HC541D	74HC541D, OCTAL 3 STATE BUFFER, SOIC20	ICS0091
429	TOP	SMD	U38	29F040J-70NS	512KX8C-70NS 4 MBIT FLASH, 32RECT JLEAD 7X9	ICS0094
430	TOP	SMD	U39	74HC541D	74HC541D, OCTAL 3 STATE BUFFER, SOIC20	ICS0091
431	TOP	SMD	U4	TL072CD	TL072CD DUAL FET OPAMP SOIC8	ICS0035
432	TOP	SMD	U40	74HC74D	74HC74D, DUAL D FF, SOIC14	ICS0027

Bill of Materials

6710 Bertram Place
Victoria, BC
Canada V8M 1Z6
TEL 250 544 4091
FAX 250 544 4100
www.im.com



Job Name :PDC0147-D03 VoicePrism Main

Extraction Date: 11/17/00 03:19:13

Item	Side	Comp Type	Ref	Value	Description	Visual Part:
433	TOP	SMD	U41	XC9536-10VQ44C	XC9536-10VQ44C, XILINX PROGRAMMABLE CPLD	ICS0093
434	TOP	SMD	U42	74HC574D	74HC574D, OCTAL 3 STATE D FF, SOIC20	ICS0089
435	TOP	SMD	U43	NE5532MP	DUAL J FET OPAMP 8 PIN SOIC8	ICS0172
436	TOP	SMD	U44	29F040J-70NS	512KX8C-70NS 4 MBIT FLASH, 32RECT JLEAD 7X9	ICS0094
437	TOP	SMD	U45	128KX8C-12NS	128KX8C-12NS,1 MBIT SRAM, 32SOJ 400 SPACING	ICS0070
438	TOP	SMD	U46	74HC245D	74HC245D, OCTAL BUS TRANSCEIVER, SOIC20	ICS0095
439	TOP	SMD	U47	74AC573D	74AC573D, OCTAL 3 STATE TRANSPARENT LATCH, SOIC20	ICS0149
440	TOP	SMD	U48	P51XAG13JBA	XROM P51XAG13, VERSION V1, 25MHZ, 44PLCC	ICS0086
441	TOP	SMD	U49	LM833D	LM833D DUAL FET OPAMP SOIC8	ICS0034
442	TOP	SMD	U5	74HC574D	74HC574D, OCTAL 3 STATE D FF, SOIC20	ICS0089
443	TOP	SMD	U50	TL072CD	TL072CD DUAL FET OPAMP SOIC8	ICS0035
444	TOP	SMD	U51	CD4051B	CD4051B, 8 to 1 ANALOG MUX, SOIC16	ICS0007
445	TOP	SMD	U52	ADC08831IM	ADC08831IM, 8 Bit Serial ADC, SMD	ICS0142
446	TOP	SMD	U53	93LC56SN	93LC56, SERIAL EEPROM, SOIC8	ICS0041
447	TOP	SMD	U54	LM833D	LM833D DUAL FET OPAMP SOIC8	ICS0034
448	TOP	SMD	U55	TL072CD	TL072CD DUAL FET OPAMP SOIC8	ICS0035
449	TOP	SMD	U56	TL072CD	TL072CD DUAL FET OPAMP SOIC8	ICS0035
450	TOP	SMD	U58	CS4224	CS4224-KS 24 BIT STEREO CODEC WITH VOLUME CONTROL, SMD 28SSOIC	ICS0202
451	TOP	SMD	U59	TL072CD	TL072CD DUAL FET OPAMP SOIC8	ICS0035
452	TOP	SMD	U6	OMIT	OMIT- 1 MBIT SRAM, 32SOJ 300 SPACING	OMIT,SRAM
453	TOP	SMD	U60	TL072CD	TL072CD DUAL FET OPAMP SOIC8	ICS0035
454	TOP	SMD	U7	32KX8C-12NS	32KX8C-12NS, 256K BIT SRAM, 28SOJ 300 SPACING	ICS0044
455	TOP	SMD	U8	OMIT	OMIT- 1 MBIT SRAM, 32SOJ 300 SPACING	OMIT,SRAM
456	TOP	SMD	U9	32KX8C-12NS	32KX8C-12NS, 256K BIT SRAM, 28SOJ 300 SPACING	ICS0044
457	TOP	THRU_COMP	C108	100U	CAP, ELECTROLYTIC RADIAL, RAD6X11, 20%, 25V, LOW ESR	CPT0090
458	TOP	THRU_COMP	C11	100U	CAP, ELECTROLYTIC RADIAL, RAD6X11, 20%, 25V, LOW ESR	CPT0090
459	TOP	THRU_COMP	C112	100U	CAP, ELECTROLYTIC RADIAL, RAD6X11, 20%, 25V, LOW ESR	CPT0090
460	TOP	THRU_COMP	C116	10U	CAP, ELECTROLYTIC RADIAL, RAD5X11, 20%, 25V	CPT0033
461	TOP	THRU_COMP	C12	100U	CAP, ELECTROLYTIC RADIAL, RAD6X11, 20%, 25V, LOW ESR	CPT0090
462	TOP	THRU_COMP	C120	1U0	CAP, ELECTROLYTIC RADIAL, RAD5X11, 20%, 25V	CPT0037
463	TOP	THRU_COMP	C125	10U	CAP,NON-POLAR ELECTROLYTIC RADIAL, RAD5X11, 20%, 25V	CPT0002
464	TOP	THRU_COMP	C126	10U	CAP,NON-POLAR ELECTROLYTIC RADIAL, RAD5X11, 20%, 25V	CPT0002
465	TOP	THRU_COMP	C127	10U	CAP,NON-POLAR ELECTROLYTIC RADIAL, RAD5X11, 20%, 25V	CPT0002
466	TOP	THRU_COMP	C128	10U	CAP,NON-POLAR ELECTROLYTIC RADIAL, RAD5X11, 20%, 25V	CPT0002
467	TOP	THRU_COMP	C141	10U	CAP, ELECTROLYTIC RADIAL, RAD5X11, 20%, 25V	CPT0033
468	TOP	THRU_COMP	C144	10U	CAP, ELECTROLYTIC RADIAL, RAD5X11, 20%, 25V	CPT0033
469	TOP	THRU_COMP	C147	10U	CAP, ELECTROLYTIC RADIAL, RAD5X11, 20%, 25V	CPT0033
470	TOP	THRU_COMP	C148	10U	CAP, ELECTROLYTIC RADIAL, RAD5X11, 20%, 25V	CPT0033
471	TOP	THRU_COMP	C18	10U	CAP, ELECTROLYTIC RADIAL, RAD5X11, 20%, 25V	CPT0033
472	TOP	THRU_COMP	C2	10U	CAP, ELECTROLYTIC RADIAL, RAD5X11, 20%, 63V	CPT0034
473	TOP	THRU_COMP	C23	100U	CAP, ELECTROLYTIC RADIAL, RAD6X11, 20%, 25V, LOW ESR	CPT0090
474	TOP	THRU_COMP	C28	10U	CAP, ELECTROLYTIC RADIAL, RAD5X11, 20%, 25V	CPT0033
475	TOP	THRU_COMP	C39	100U	CAP, ELECTROLYTIC RADIAL, RAD6X11, 20%, 25V, LOW ESR	CPT0090
476	TOP	THRU_COMP	C4	10U	CAP, ELECTROLYTIC RADIAL, RAD5X11, 20%, 63V	CPT0034
477	TOP	THRU_COMP	C44	100U	CAP, ELECTROLYTIC RADIAL, RAD6X11, 20%, 25V, LOW ESR	CPT0090
478	TOP	THRU_COMP	C5	100U	CAP, ELECTROLYTIC RADIAL, RAD13X20, 20%, 100V	CPT0031
479	TOP	THRU_COMP	C50	10U	CAP, ELECTROLYTIC RADIAL, RAD5X11, 20%, 25V	CPT0033
480	TOP	THRU_COMP	C6	100U	CAP, ELECTROLYTIC RADIAL, RAD8X14, 20%, 50V	CPT0032
481	TOP	THRU_COMP	C64	10U	CAP, ELECTROLYTIC RADIAL, RAD5X11, 20%, 25V	CPT0033
482	TOP	THRU_COMP	C66	100U	CAP, ELECTROLYTIC RADIAL, RAD6X11, 20%, 25V, LOW ESR	CPT0090
483	TOP	THRU_COMP	C7	100U	CAP, ELECTROLYTIC RADIAL, RAD8X14, 20%, 50V	CPT0032
484	TOP	THRU_COMP	C78	100U	CAP, ELECTROLYTIC RADIAL, RAD6X11, 20%, 25V, LOW ESR	CPT0090
485	TOP	THRU_COMP	C8	100U	CAP, ELECTROLYTIC RADIAL, RAD8X14, 20%, 50V	CPT0032
486	TOP	THRU_COMP	C80	10U	CAP,NON-POLAR ELECTROLYTIC RADIAL, RAD5X11, 20%, 25V	CPT0002
487	TOP	THRU_COMP	C83	10U	CAP,NON-POLAR ELECTROLYTIC RADIAL, RAD5X11, 20%, 25V	CPT0002
488	TOP	THRU_COMP	C94	10U	CAP,NON-POLAR ELECTROLYTIC RADIAL, RAD5X11, 20%, 25V	CPT0002
489	TOP	THRU_COMP	C95	10U	CAP, ELECTROLYTIC RADIAL, RAD5X11, 20%, 25V	CPT0033
490	TOP	THRU_COMP	C96	100U	CAP, ELECTROLYTIC RADIAL, RAD6X11, 20%, 25V, LOW ESR	CPT0090
491	TOP	THRU_COMP	J1	HDR1X6-LCK	HDR 1X6, 0.156" Spacing, Male, Vertical, Locking	HDT0068
492	TOP	THRU_COMP	J10	RCA SINGLE	RCA JACK SINGLE RIGHT ANGLE PCB MOUNT	JCK0013
493	TOP	THRU_COMP	J11	1X9 HDR MALE VERTICA	HDR 1X9, 0.1" Spacing, Male, Vertical	HDT0057
494	TOP	THRU_COMP	J12	2X20 HDR MALE VERTIC.	HDR 2X20, 0.1" Spacing, Male, Vertical	HDT0051
495	TOP	THRU_COMP	J13	B12BPHK	HDR 1x12, 2mm Spacing, B12BPHK	HDT0066
496	TOP	THRU_COMP	J14	CL1227	CL1227, CLIFF 1/4" JACK, FULL THREADED NOSE	JCK0038
497	TOP	THRU_COMP	J15	1X6 HDR MALE VERTICA	HDR 1X6, 0.1" Spacing, Male, Vertical	HDT0063
498	TOP	THRU_COMP	J16	CL1227	CL1227, CLIFF 1/4" JACK, FULL THREADED NOSE	JCK0038
499	TOP	THRU_COMP	J17	OMIT	OMIT HDR 1x5, 0.1" Spacing	OMIT-CON1
500	TOP	THRU_COMP	J18	B6BPHK	HDR 1x6, 2mm Spacing, B6BPHK	HDT0067
501	TOP	THRU_COMP	J19	B10BPHK	HDR 1x10, 2mm Spacing, B10BPHK	HDT0011
502	TOP	THRU_COMP	J2	5 PIN DIN	5 PIN DIN, HORIZONTAL	JCK0045
503	TOP	THRU_COMP	J20	CL1227	CL1227, CLIFF 1/4" JACK, FULL THREADED NOSE	JCK0038
504	TOP	THRU_COMP	J21	CL1227	CL1227, CLIFF 1/4" JACK, FULL THREADED NOSE	JCK0038

Bill of Materials

6710 Bertram Place
Victoria, BC
Canada V8M 1Z6
TEL 250 544 4091
FAX 250 544 4100
www.iml.com



Job Name :PDC0147-D03 VoicePrism Main

Extraction Date: 11/17/00 03:19:13

<u>Item</u>	<u>Side</u>	<u>Comp Type</u>	<u>Ref</u>	<u>Value</u>	<u>Description</u>	<u>Visual Part:</u>
505	TOP	THRU_COMP	J22	B5BPHK	HDR 1x5, 2mm Spacing, B5BPHK	HDT0006
506	TOP	THRU_COMP	J23	B10BPHK	HDR 1x10, 2mm Spacing, B10BPHK	HDT0011
507	TOP	THRU_COMP	J3	B10BPHK	HDR 1x10, 2mm Spacing, B10BPHK	HDT0011
508	TOP	THRU_COMP	J4	1X20 HDR MALE VERTIC.	HDR 1X20, 0.1" Spacing, Male, Vertical	HDT0065
509	TOP	THRU_COMP	J5	5 PIN DIN	5 PIN DIN, HORIZONTAL	JCK0045
510	TOP	THRU_COMP	J6	5 PIN DIN	5 PIN DIN, HORIZONTAL	JCK0045
511	TOP	THRU_COMP	J7	B12BPHK	HDR 1x12, 2mm Spacing, B12BPHK	HDT0066
512	TOP	THRU_COMP	J8	B10BPHK	HDR 1x10, 2mm Spacing, B10BPHK	HDT0011
513	TOP	THRU_COMP	J9	CL1227	CL1227, CLIFF 1/4" JACK, FULL THREADED NOSE	JCK0038
514	TOP	THRU_COMP	SW1	B3F-1052	B3F-1052 MOMENTARY SWITCH	SWT0012
515	TOP	THRU_COMP	SW2	MTH-2U-EE	E Switch, Push Button Latching Switch, DPDT, MTH-2U-EE,	SWT0019
516	TOP	THRU_COMP	U1	LM317T	LM317T, 0-37V ,Adj, 3-Terminal, TO220	ICT0097
517	TOP	THRU_COMP	U35	11.2896MHZ	11.2896MHZ CLOCK OSCILLATOR MODULE, 8DIP	OSC0018
518	TOP	THRU_COMP	U37	+5VDC Low Power	+5VDC Relay, Low Power, Form 2C	RLY0002
519	TOP	THRU_COMP	U57	NJM7805FA	NJM7805FA, +5V, Fixed 3 Terminal, Pos Regulator, Plastic TO220	ICT0098
520	TOP	THRU_COMP	Y1	32.000MHZ	32.000MHz, HC49/US, FIRST FUNDAMENTAL,LOW PROFILE >5MM	XTL0012
521	TOP	THRU_COMP	Y2	16.000MHZ	16.000MHz, HC49/U	XTL0004
522	TOP	THRU_COMP	Y3	24.000MHZ	24.000MHz, HC49/U, FIRST FUNDAMENTAL	XTL0005