



**Technical manual**  
**AIR SERIES.**

## AIR TECHNICAL MANUAL – INDEX.

Changing modes.

Replacing drivers

- AIR6 / 15
- AIR 20
- AIR 25
- AIR Base 1 / 2
- AIR Base 12 / 24
- Driver warranty policy
- Driver Production date

Adjusting Gain with AIR calibrate

Clearing network settings

Amp module overview.

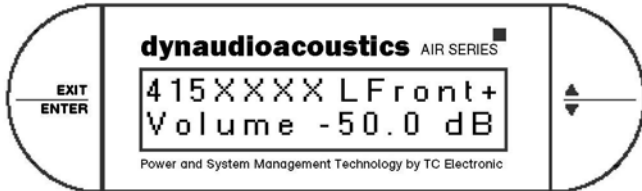
Fault Finding.

## Changing Modes.

There are 3 modes in which the speaker can obtain.

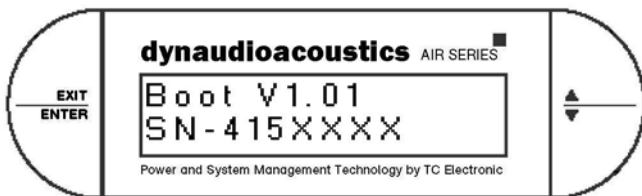
### Application:

By holding “arrow up” and “arrow down” while powering on, the speaker will start up in application mode.



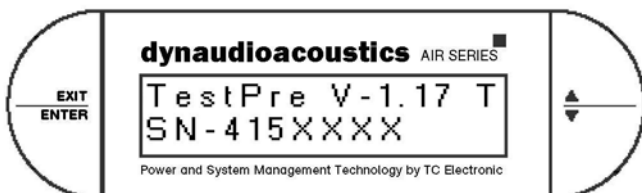
### Boot:

By holding “Exit” and “arrow up” while powering on, the speaker will start up in Boot mode.



### TestPre:

By holding “Enter” and “arrow down” while powering on, the speaker will start up in TestPre.



## Replacing Drivers

There are used many different types of drivers in the Air series. Listed below are the different drivers with TC order number and connection colour.

<p><b>Air 6</b>          Tweeter: D-260 – 81441 TC: 795031011          Woofer: 84845 TC: 795034011</p>	<p style="text-align: right;">Driver connection wire colour.</p> <p>+ : Blue      - : Grey          + : Red       - : White</p>
----------------------------------------------------------------------------------------------------------------	-------------------------------------------------------------------------------------------------------------------------------------

<p><b>Air 15</b>          Tweeter: D-260 – 81441 TC: 795031011          Woofer: 87505 TC: 795036011</p>	<p>+ : Blue      - : Grey          + : Red       - : White</p>
-----------------------------------------------------------------------------------------------------------------	--------------------------------------------------------------------

<p><b>Air 20</b>          Tweeter / midrange: 81041 TC: 795032011          Woofer: 87506 TC: 795037011</p>	<p>+ : Blue      - : Grey          + : Red       - : White</p>
--------------------------------------------------------------------------------------------------------------------	--------------------------------------------------------------------

<p><b>Air 25</b>          Tweeter midrange section:          81042 TC: 795037111          Midrange: T84331 TC: 795037211          Woofer 1: T87506 TC: 795037011          Woofer 2: T87506 TC: 795037011</p>	<table style="width: 100%; border-collapse: collapse;"> <tr> <td style="width: 10%;"></td> <td style="width: 10%;">TW</td> <td style="width: 30%;">+ : Blue</td> <td style="width: 50%;">- : Grey</td> </tr> <tr> <td></td> <td>MID</td> <td>+ : Green</td> <td>- : White</td> </tr> <tr> <td></td> <td></td> <td>+ : Green</td> <td>- : White</td> </tr> <tr> <td></td> <td>Left</td> <td>+ : Red</td> <td>- : White</td> </tr> <tr> <td></td> <td>Right</td> <td>+ : Blue</td> <td>- : Grey</td> </tr> </table>		TW	+ : Blue	- : Grey		MID	+ : Green	- : White			+ : Green	- : White		Left	+ : Red	- : White		Right	+ : Blue	- : Grey
	TW	+ : Blue	- : Grey																		
	MID	+ : Green	- : White																		
		+ : Green	- : White																		
	Left	+ : Red	- : White																		
	Right	+ : Blue	- : Grey																		

<p><b>Air Base 1</b>          Woofer: 87505 TC: 795036011</p>	<p>+ : Red      - : White</p>
-------------------------------------------------------------------	-------------------------------

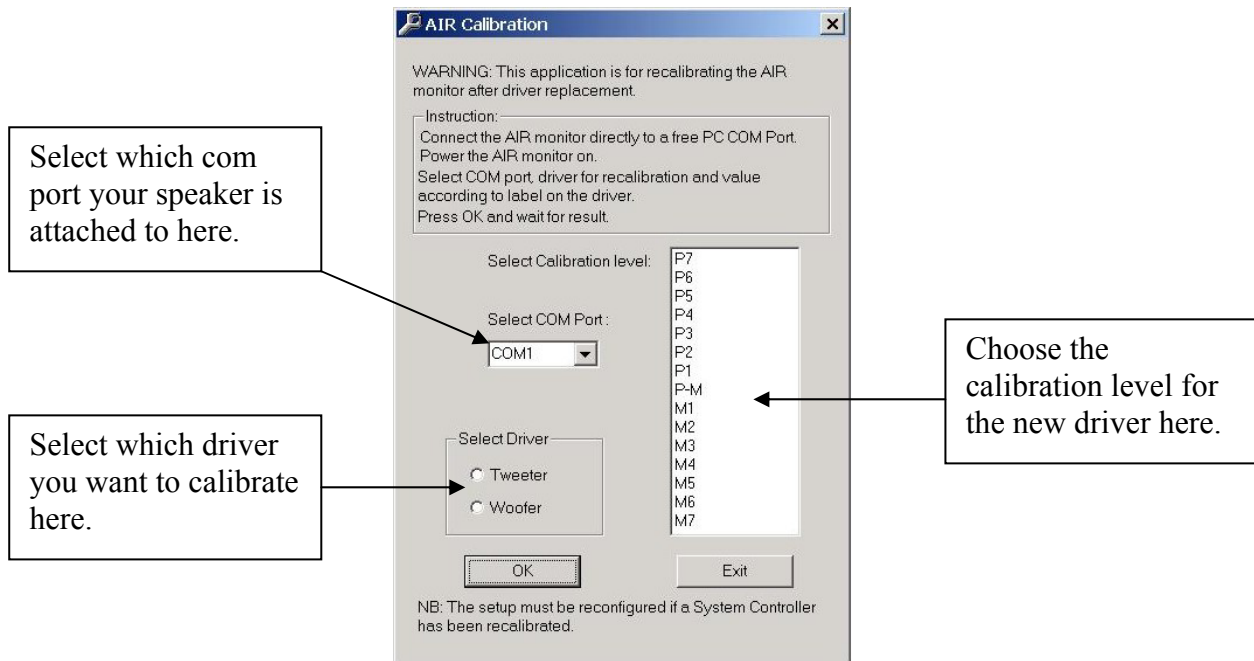
<p><b>Air Base 2</b>          Woofer 1: 87533 TC: 795038011          Woofer 2: 87533 TC: 795038011</p>	<p>Upper + : Red      - : White          Lower + : Red     - : White</p>
----------------------------------------------------------------------------------------------------------------	------------------------------------------------------------------------------

<p><b>Air Base 12</b>          Woofer: T87999 TC: 795036012</p>	<p>+ : Blue      - : White</p>
---------------------------------------------------------------------	--------------------------------

<p><b>Air Base 24</b>          Woofer 1: T87997 TC: 795038012          Woofer 2: T87997 TC: 795038012</p>	<p>Upper + : Blue      - : Grey          Lower + : White    - : Green</p>
-------------------------------------------------------------------------------------------------------------------	-------------------------------------------------------------------------------

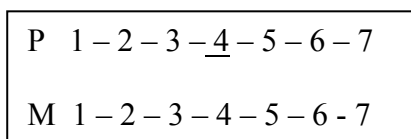
# Air Calibrate.

The Air calibrate is a program used to acoustically calibrate the speakers internal amplifier module to a new installed. The program can be downloaded from [www.dynaudioacoustics.com](http://www.dynaudioacoustics.com) under “software” section.



The Calibration data is located on the magnet of a new driver. It ranges from M7 to P7. Each level indicates an indrese or decrease in sensitivity of 0.2dB. Giving the driver with a level P4 a sensitivity level that is 0.8dB above reference level.

Calibration sticker looks like this.



In the near future there will come a new version which enabels calibration of speakers with more than 2 drivers. – Manual will be updated when this arrives.

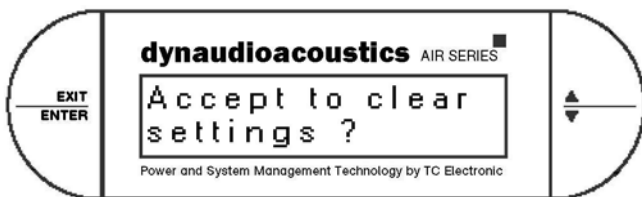
## Clearing Network settings.

To clear network settings power off the speaker. Press and hold “Exit” and “Enter” while powering on. Wait 5 seconds.

The speaker writes:



Press “Enter”



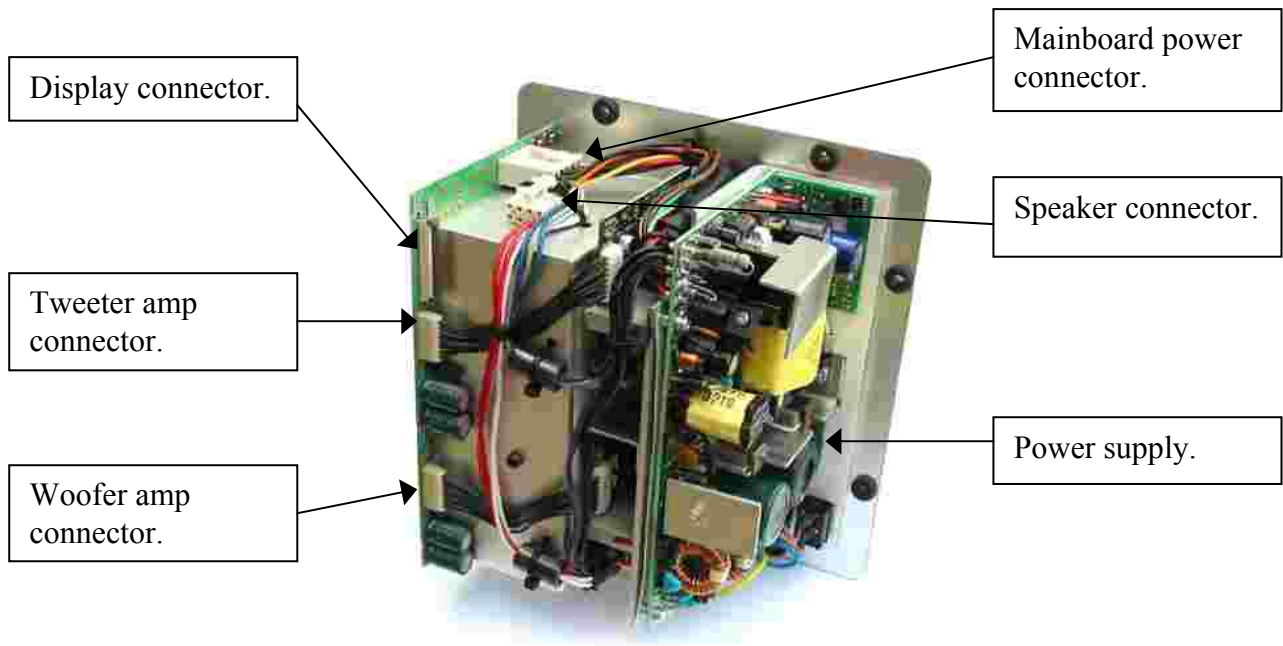
Press “Enter”

The speaker will now restart.

Setup the speaker again.

## Amp module overview.

This is a picture of the amplifier module used in Air 6 and Air 15. Amp modules used in the rest of the range looks similar.



It is not possible to do any service of this module at external service centres besides replacement of Power supplies. If the module needs service besides replacement of powersupply, it has to be returned to manufacture. Any change of components should be followed by a recalibration of the module to ensure the high level of calibration this sytem is capable of.

## Fault Finding

No Sound, Text or light in display Ok	Check network settings. Check cables and connection
Speaker not found in network	Erase network settings. Check cable and connection. Is speaker powered up?
No sound in tweeter. Bass Ok (Air6/15)	Check connection from mainboard to amp
Speakers not in same level	Check gain settings in Air soft - speaker setup
Speaker writes: PSU error	Power malfunction - return to service center
Speaker red LED illuminates continuously and is muted or plays silently	The speaker is in thermal protection mode, is speaker properly vented, played loud for a long time?
Speaker illuminates red LED accordingly with the beat in the played music	The speaker is in driver thermal protection mode, turn down volume to protect drivers.
Speaker writes "Boot" or "TestPre" in display.	Power off the speaker. Hold "Exit" and "arrow up" while powering on the speaker. If this don't work, try to upload application software, else return to service center.
Speaker not found in network, no lock, orange LED flashed 3 times.	Power off the speaker. Hold "Exit" and "arrow up" while powering on the speaker. If this don't work, try to upload application software, else return to service center.
Speaker not found in network.	Check cable and connections. Clear network settings.
Sound drops out intermetient.	Check cable and connection. Return to service center.
Speaker blows main fuse.	Return unit to service center. Please aquire RMA no.
Tweeter sound drops out intermetient.	Check tweeter signal cable page 11. Return to service.
Speaker makes a clicking sound.	Check cable and connection. Return to service center.
Master speaker does not react on the front buttons.	Check if the Master/Slave button is in it's outer position. If this is set correct, return the speaker for service.

If there is any add-ons or questions which is not explained or explained properly in this manual, please dont hessitate to contact me at: [MAP@tcelectronic.com](mailto:MAP@tcelectronic.com)