

# BX30 Service Manual

## Notes regarding the limiter:

A new and less noisy limiter was introduced from approx. June 2000.  
Circuit board version JDP6310-L-2 can be modified to this limiter if returned to the factory.

Circuit board version JDP6310-L-1 can not be modified.

## Changes are:

Limiter section:

R113 : OE link  
R175 : removed  
IC13 : removed  
Limiter sub-PCB (362002) mounted  
C129 : removed  
R103 : removed  
D20 : removed

New resistor 68Kohm from IC15B pin5 to GND (not the audio-GND)

New wire link from T1 emitter on Limiter sub-PCB to TP11 on main board

Detect section:

R55 : removed  
R56 : removed  
R54 : 47Kohm

## Test measurements / adjustments:

Idle current:

measure from TP301 to TP302: 15mV ±1mV (adjust R161)

Limiter (**old** limiter version, sub-PCB (362002) is **not** mounted):

measure TP101 to JP3-2(ground): -1,1V ±0,01V (adjust R105)

Settings:

LEVEL

Calibration: Max  
Sensitivity: +4dBm

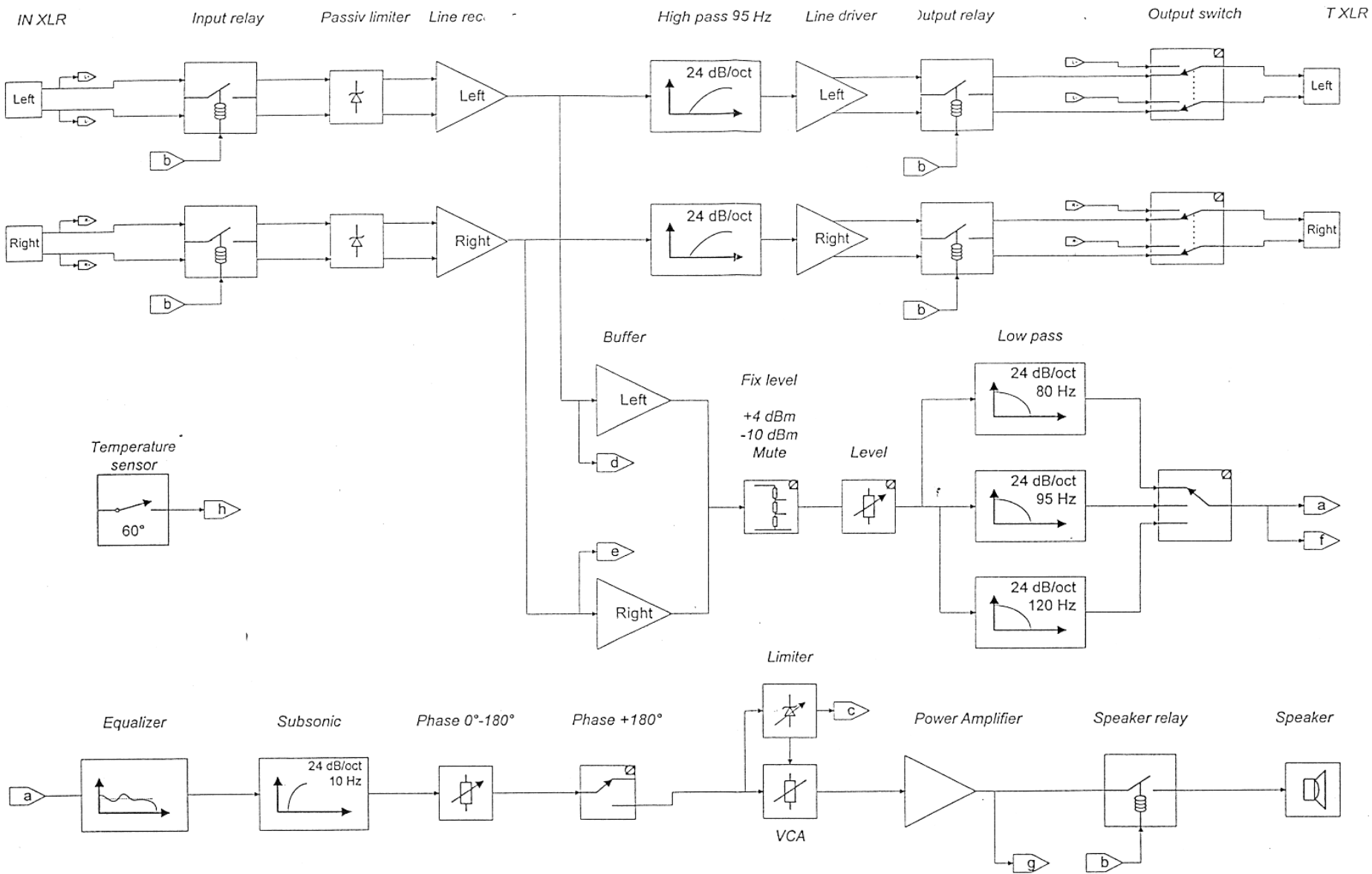
PHASE

Calibration: 0°  
Polarity: 0°

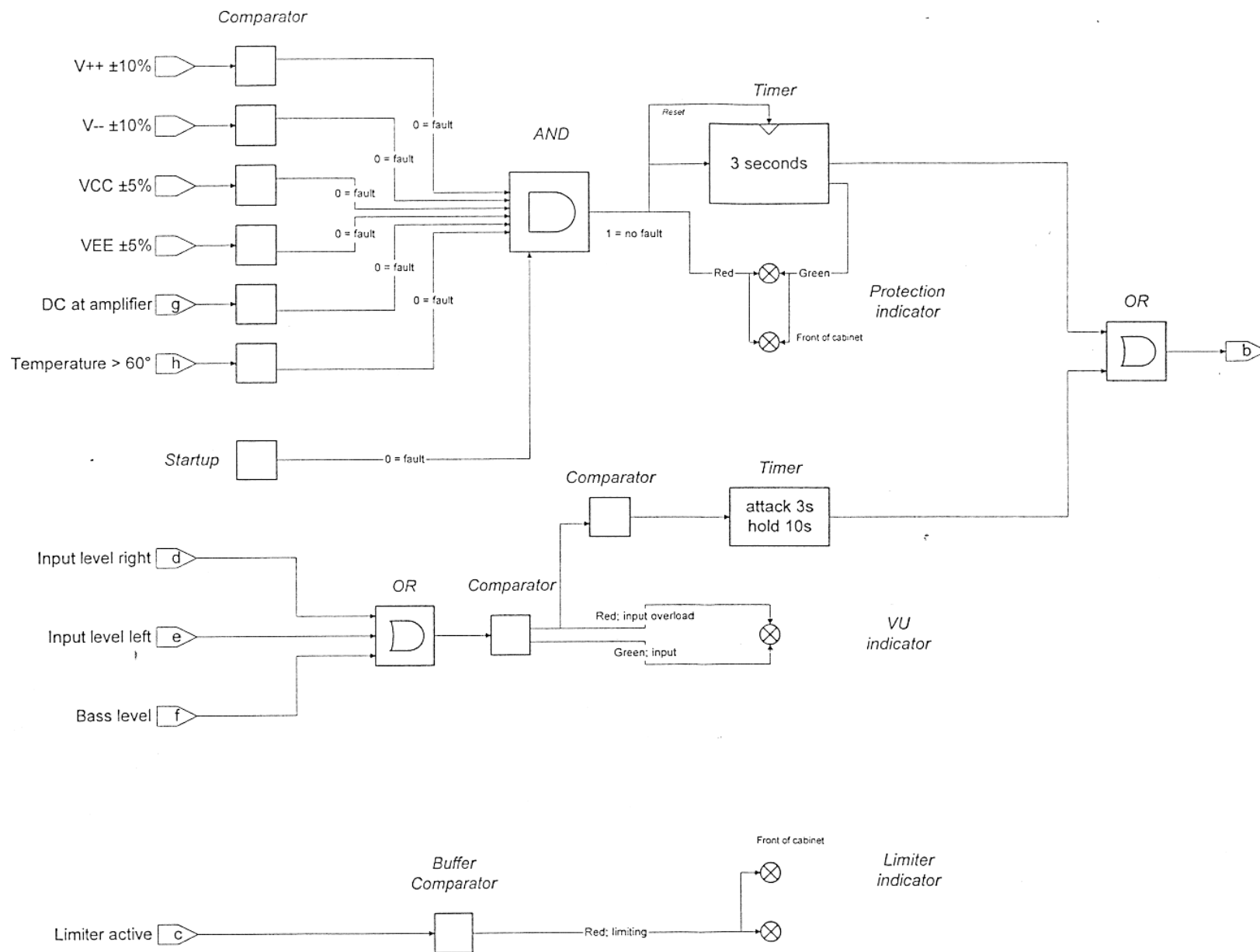
CROSSOVER: 120Hz

Frequency	16	20	25	31,5	40	50	63	80	100	125	160	Hz
Input: -20dBu*												
AmpOut: JP3 pin1	11	21	23	23	20	18	19	21	21	19	12	dBu
Limiter LED ON @ input level*:	-11	-16	-15	-13	-10	-8	-8	-10	-10	-8	-1	dBu
Detect O/L LED ON @ input level*:	-6	-12	-12	-12	-11	-11	-10	-7	-1	1	-4	dBu

\*Generator connected to both inputs



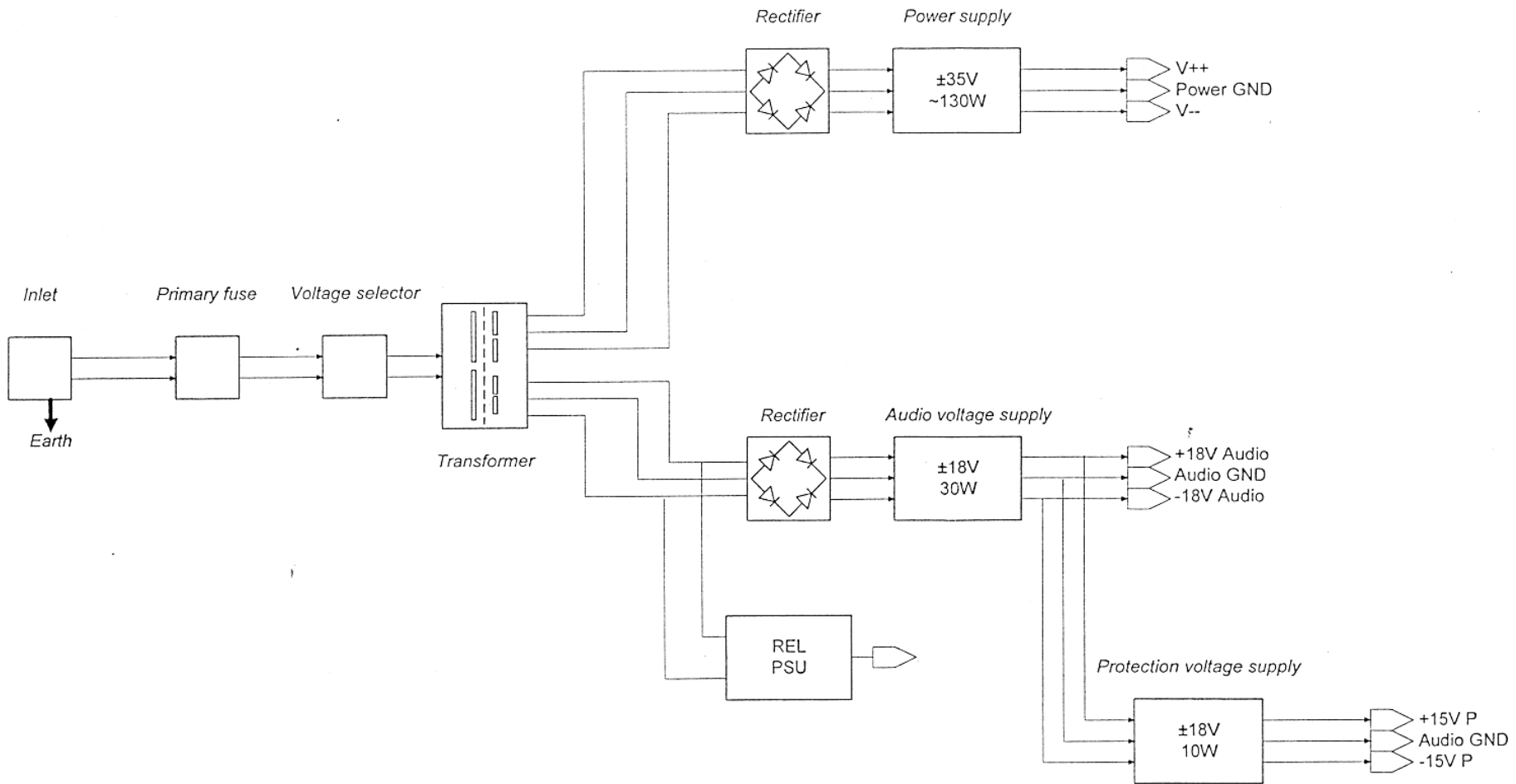
☐ = also adjustable with a tool

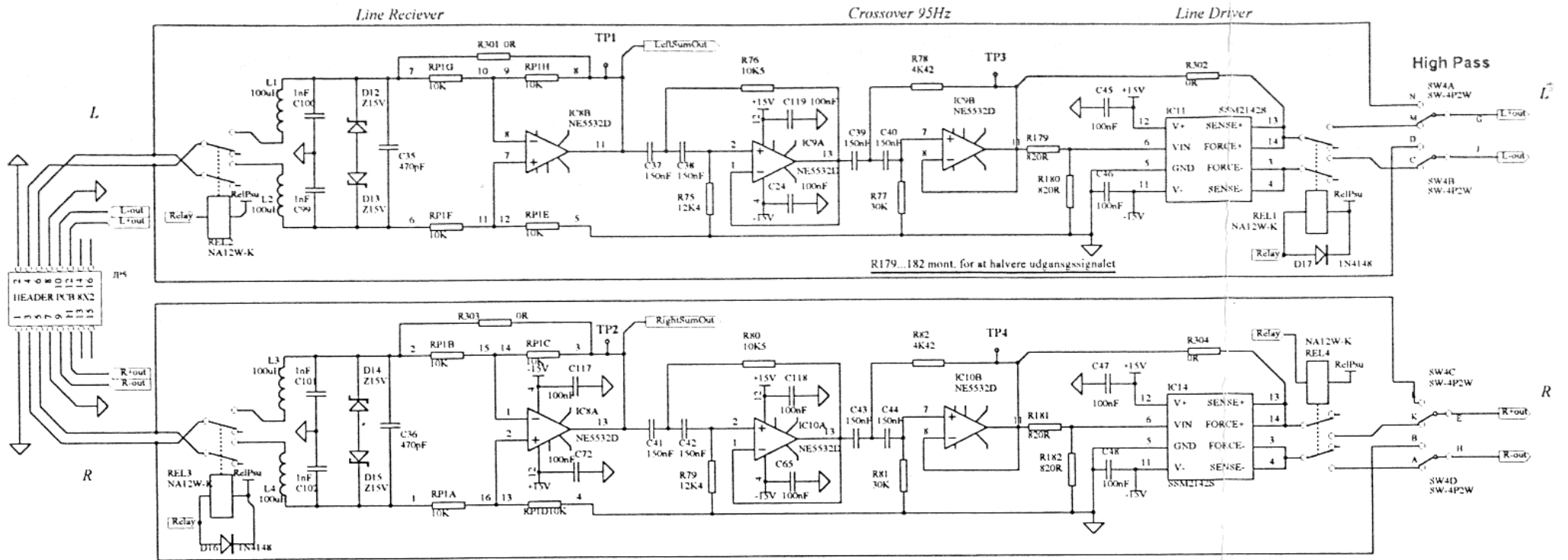


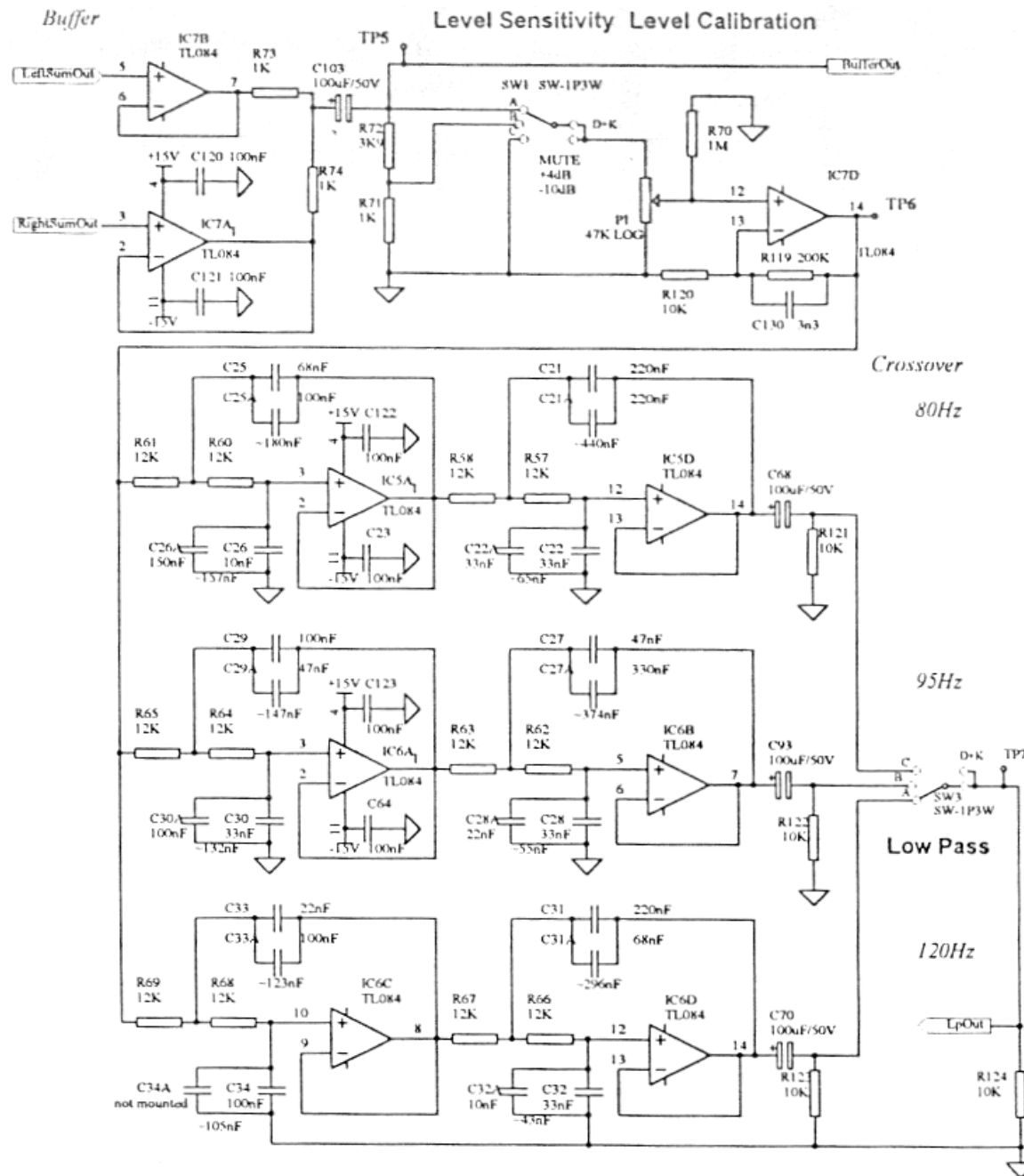
also adjustable with a tool

**DYNAUDIO**

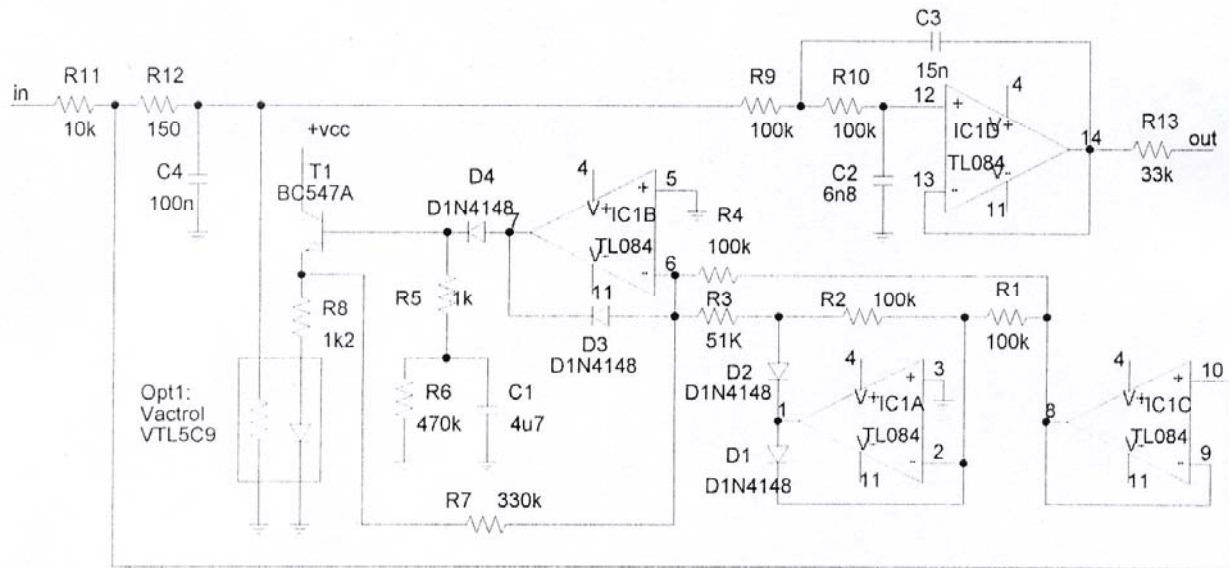
DRAWN BY	Dennis Hardon	PAGE	2 OF 3
REVISED	10 Aug. 1998	DATE	19-11-97











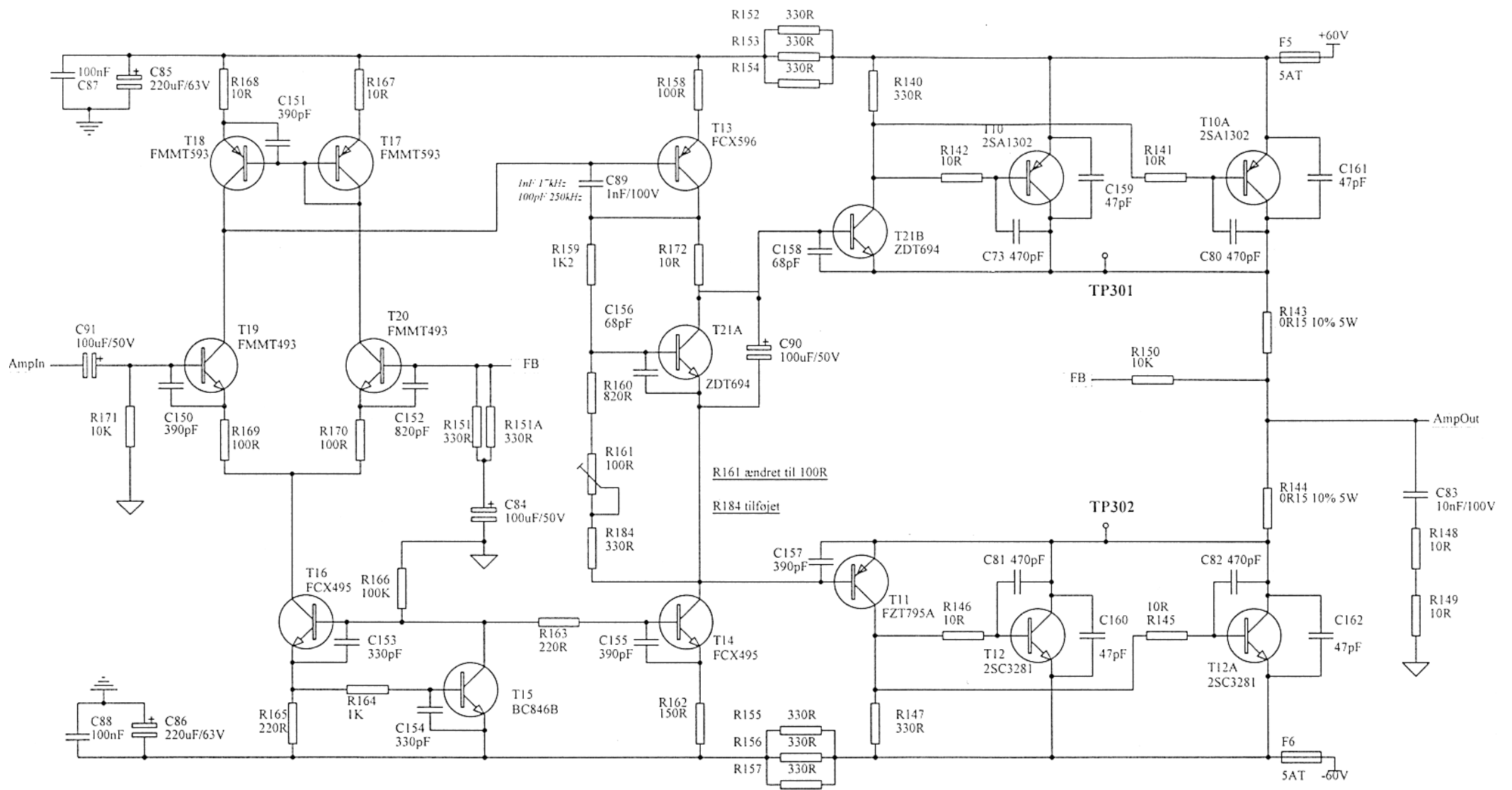
Limiter sub-PCB (362002)

was introduced from approx. June 2000.

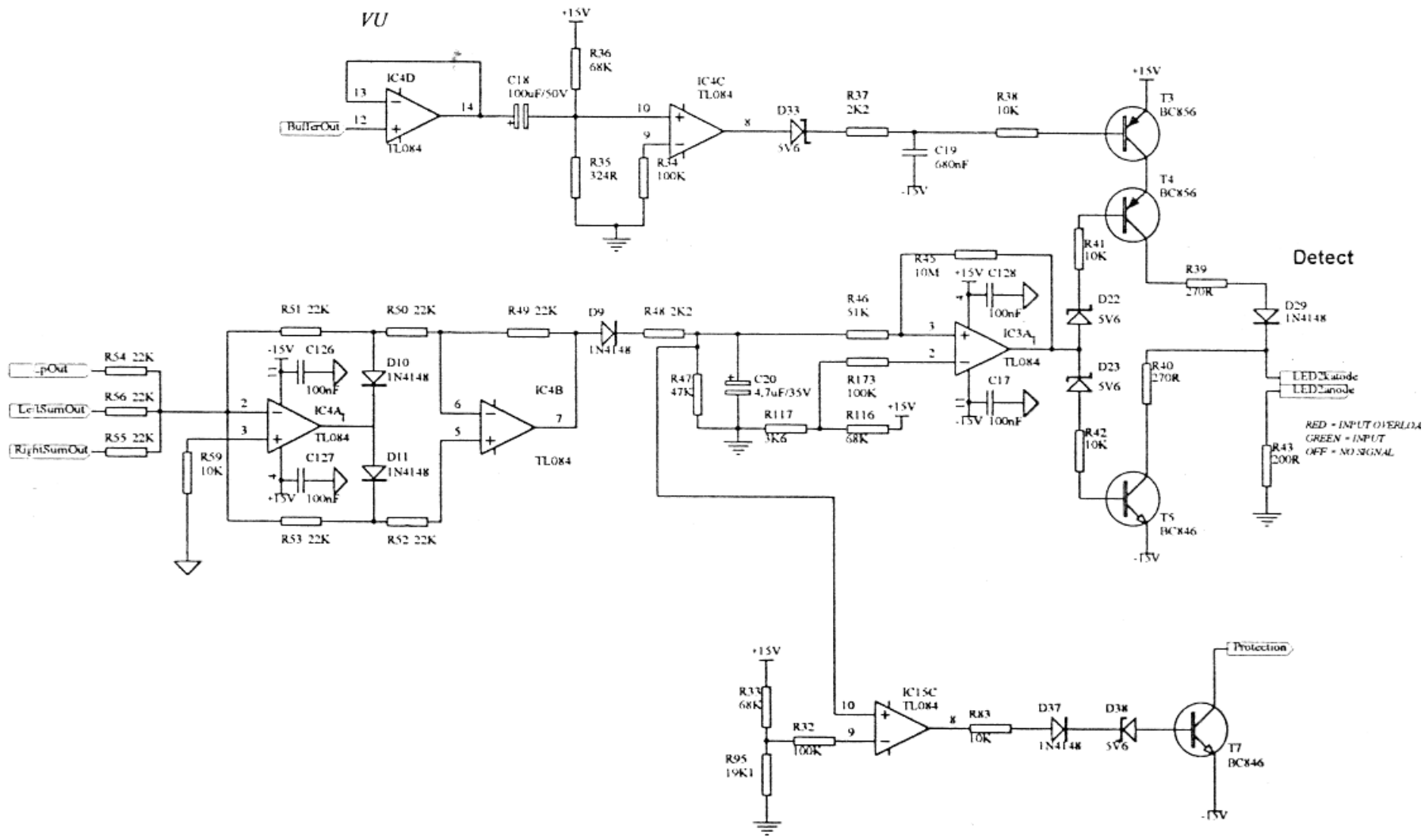
Circuit board version JDP6310-L-2 can be modified to this limiter if returned to the factory.

Circuit board version JDP6310-L-1 can not be modified.

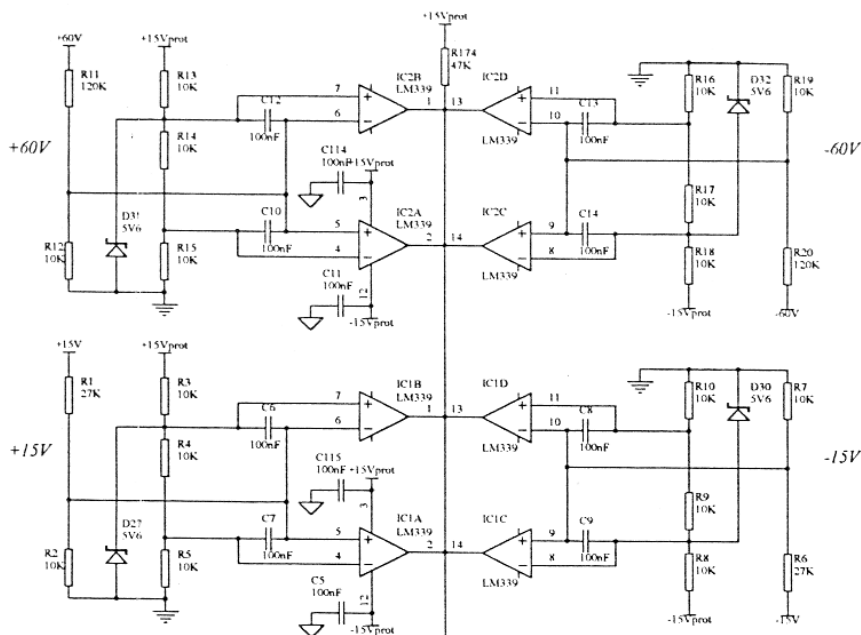




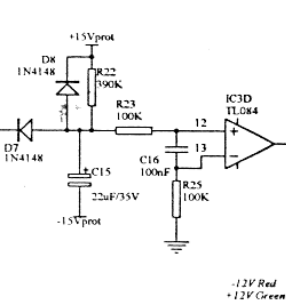
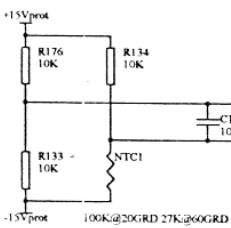
Title	<b>BX30, SA130 1.2</b>	
Size	Number	Revision
A4	Power Amplifier	A
Date:	20-Oct-1999	Sheet 3 of 6
File:	C:\ADVLAGER\BX3012\BX30PA12.Sch	Drawn By: DH



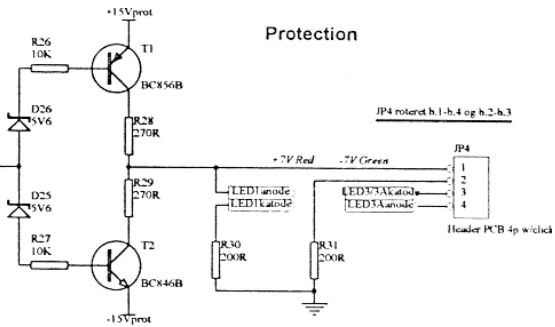
Comparator



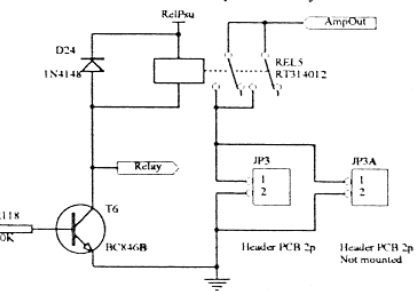
Temperature



Protection



Speaker relay

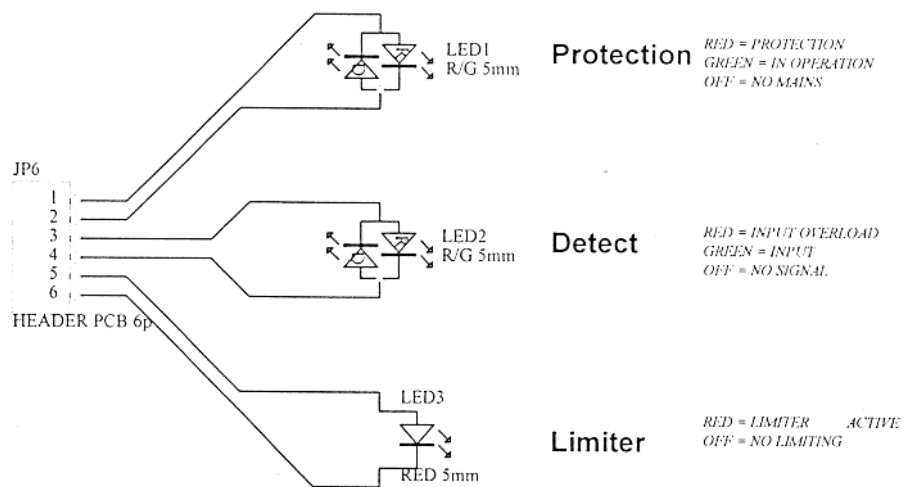
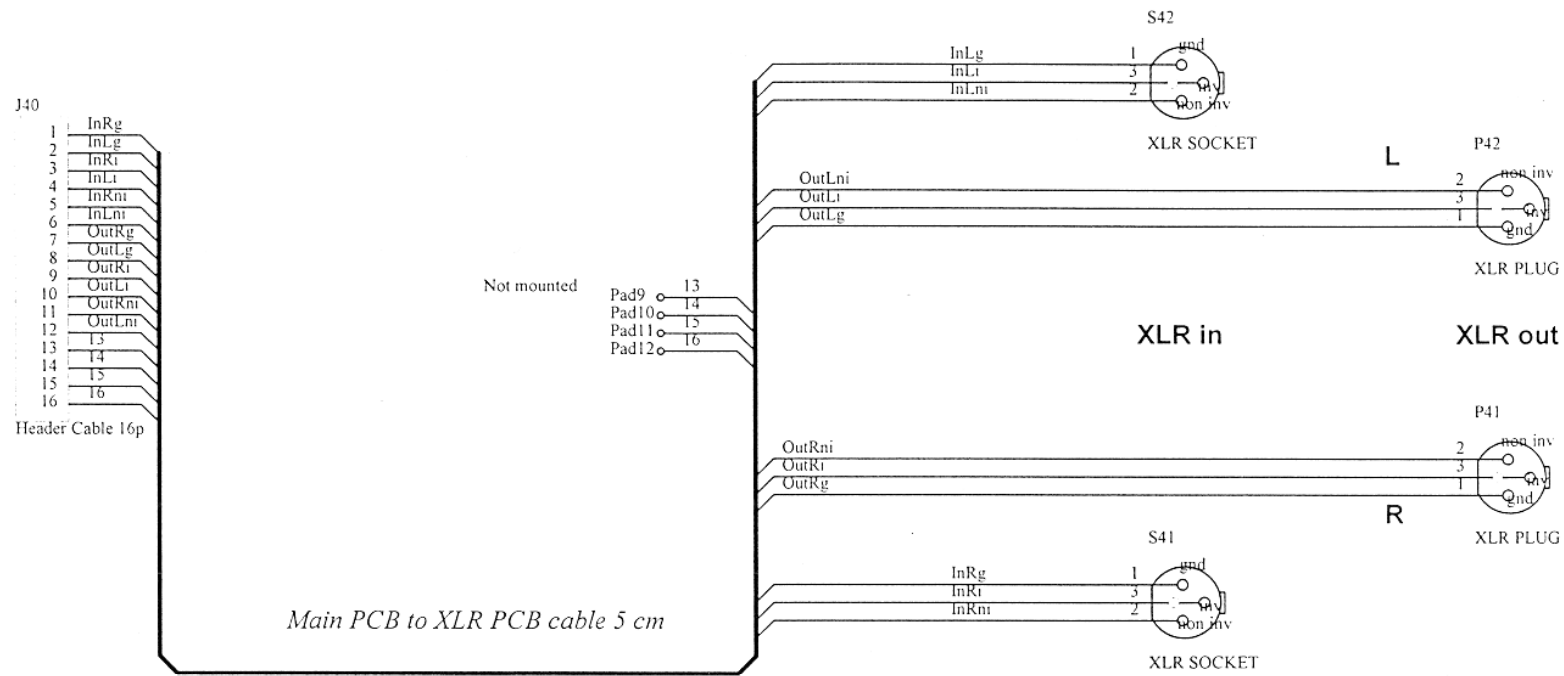


-15V = failure

TP209

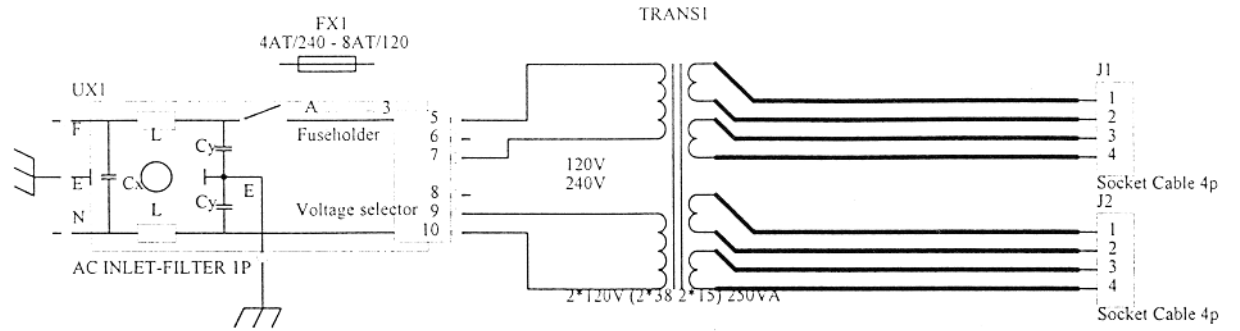
Protection





XLR PCB  
BX30X12.SCH

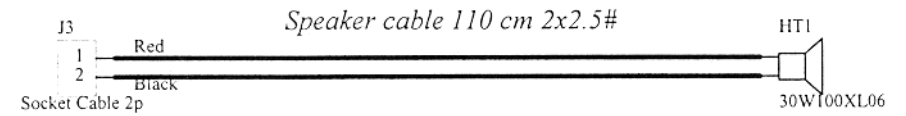
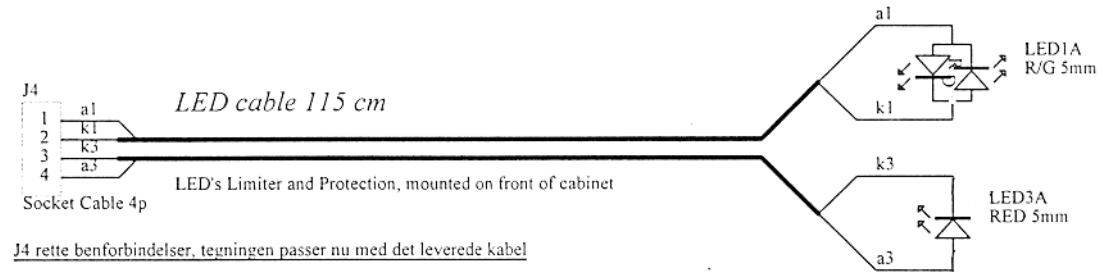
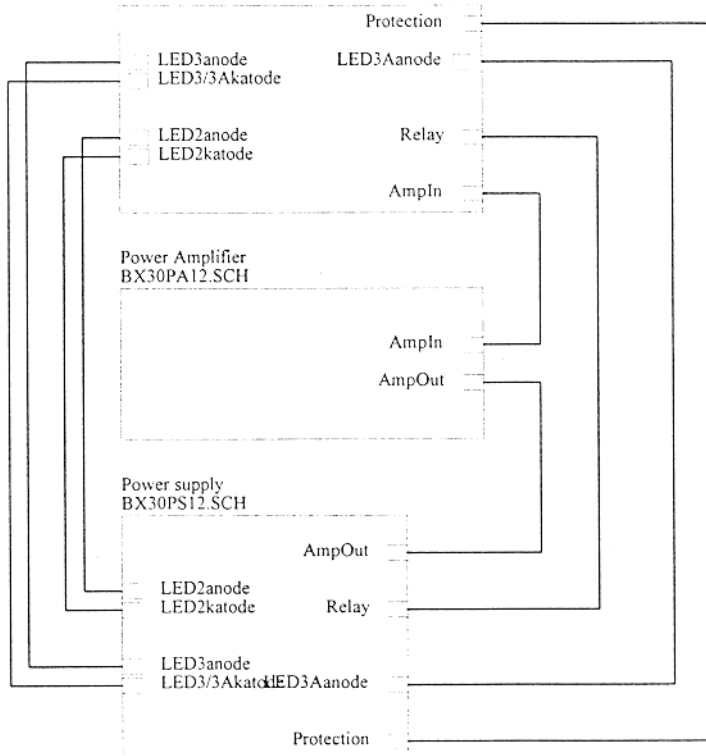
LED PCB  
BX30d12.sch



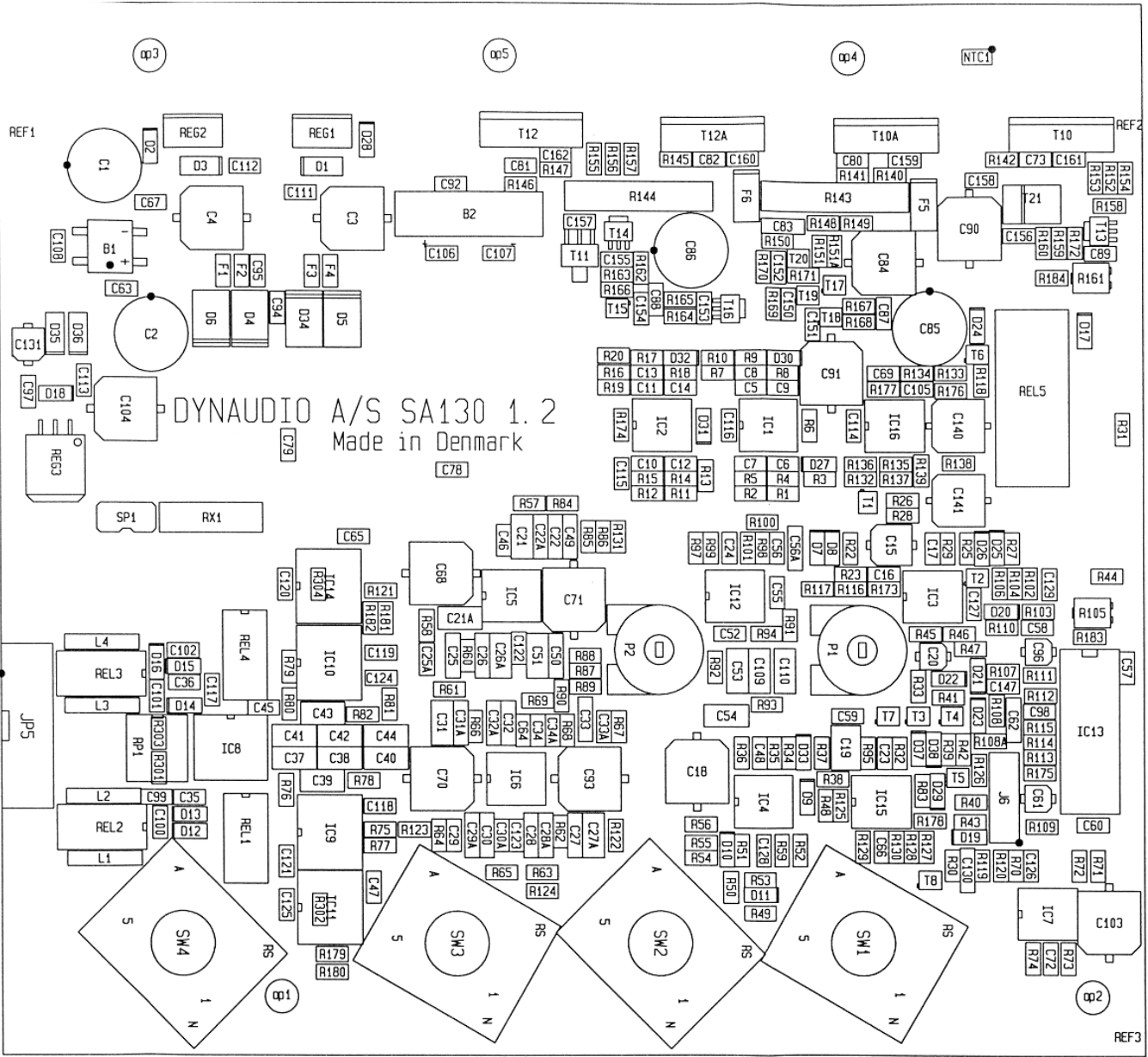
Amplifier  
BX30AM12.SCH

Power Amplifier  
BX30PA12.SCH

Power supply  
BX30PS12.SCH



Title	<b>BX30, SA130 1.2</b>		
Size	Number	Project	Revision
A4			A
Date:	20-Oct-1999	Sheet 1 of 6	
File:	CA:\DVL\AGER\BX3012\BX3012.PR Drawn By: DH		



DYNAUDIO A/S SA130 1.2  
Made in Denmark

REF1

REF2

REF3

OP3

OP5

OP4

NTC1

OP2

JP5

SP1

RX1

REL1

REL2

REL3

REL4

REL5

SM4

SM3

SM2

SM1

IC1

IC2

IC3

IC4

IC5

IC6

IC7

IC8

IC9

IC10

IC11

IC12

IC13

IC14

IC15

IC16

IC17

IC18

IC19

IC20

IC21

IC22

IC23

IC24

IC25

IC26

IC27

IC28

IC29

IC30

IC31

IC32

IC33

IC34

IC35

IC36

IC37

IC38

IC39

IC40

IC41

IC42

IC43

IC44

IC45

IC46

IC47

IC48

IC49

IC50

IC51

IC52

IC53

IC54

IC55

IC56

IC57

IC58

IC59

IC60

IC61

IC62

IC63

IC64

IC65

IC66

IC67

IC68

IC69

IC70

IC71

IC72

IC73

IC74

IC75

IC76

IC77

IC78

IC79

IC80

REG1

REG2

REG3

REG4

REG5

REG6

REG7

REG8

REG9

REG10

REG11

REG12

REG13

REG14

REG15

REG16

REG17

REG18

REG19

REG20

REG21

REG22

REG23

REG24

REG25

REG26

REG27

REG28

REG29

REG30

REG31

REG32

REG33

REG34

REG35

REG36

REG37

REG38

REG39

REG40

REG41

REG42

REG43

REG44

REG45

REG46

REG47

REG48

REG49

REG50

REG51

REG52

REG53

REG54

REG55

REG56

REG57

REG58

REG59

REG60

REG61

REG62

REG63

REG64

REG65

REG66

REG67

REG68

REG69

REG70

REG71

REG72

REG73

REG74

REG75

REG76

REG77

REG78

REG79

REG80

REG81

REG82

REG83

REG84

REG85

REG86

REG87

REG88

REG89

REG90

REG91

REG92

REG93

REG94

REG95

REG96

REG97

REG98

REG99

REG100

REG101

REG102

REG103

REG104

REG105

REG106

REG107

REG108

REG109

REG110

REG111

REG112

REG113

REG114

REG115

REG116

REG117

REG118

REG119

REG120

REG121

REG122

REG123

REG124

REG125

REG126

REG127

REG128

REG129

REG130

REG131

REG132

REG133

REG134

REG135

REG136

REG137

REG138

REG139

REG140

REG141

REG142

REG143

REG144

REG145

REG146

REG147

REG148

REG149

REG150

REG151

REG152

REG153

REG154

REG155

REG156

REG157

REG158

REG159

REG160

REG161

REG162

REG163

REG164

REG165

REG166

REG167

REG168

REG169

REG170

REG171

REG172

REG173

REG174

REG175

REG176

REG177

REG178

REG179

REG180

REG181

REG182

REG183

REG184

REG185

REG186

REG187

REG188

REG189

REG190

REG191

REG192

REG193

REG194

REG195

REG196

REG197

REG198

REG199

REG200

REG201

REG202

REG203

REG204

REG205

REG206

REG207

REG208

REG209

REG210

REG211

REG212

REG213

REG214

REG215

REG216

REG217

REG218

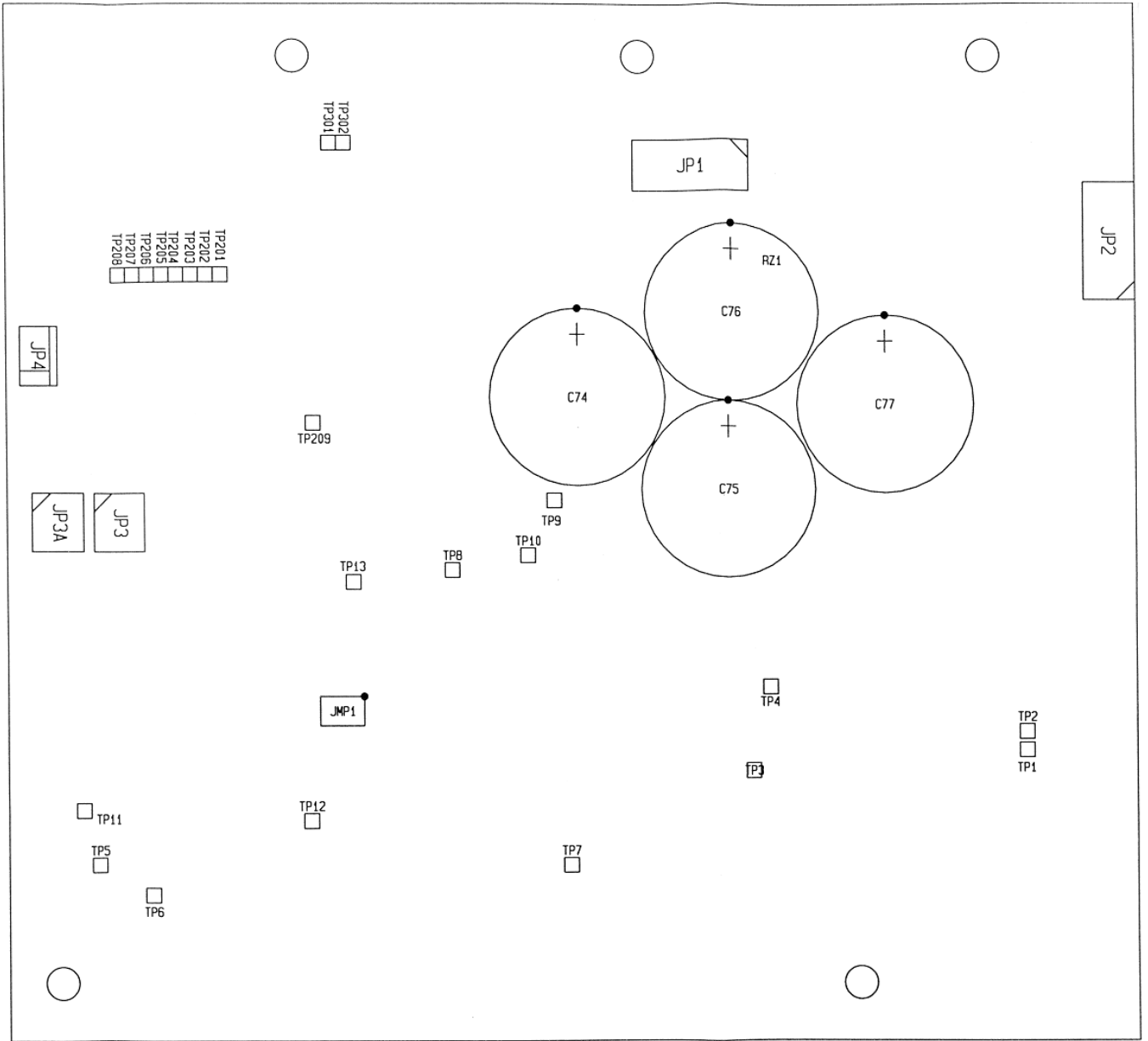
REG219

REG220

REG221

REG222

REG223



TP201  
TP202  
TP203  
TP204  
TP205  
TP206  
TP207  
TP208

TP302  
TP301

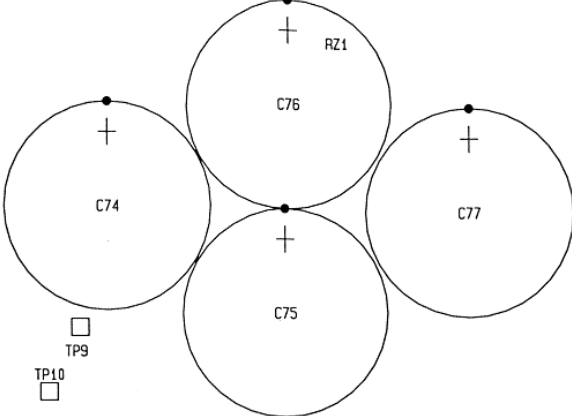
JP4

JP3A

JP3

JP1

JP2



TP209

TP13

TP8

TP10

TP9

JMP1

TP4

TP3

TP2  
TP1

TP11

TP5

TP6

TP12

TP7