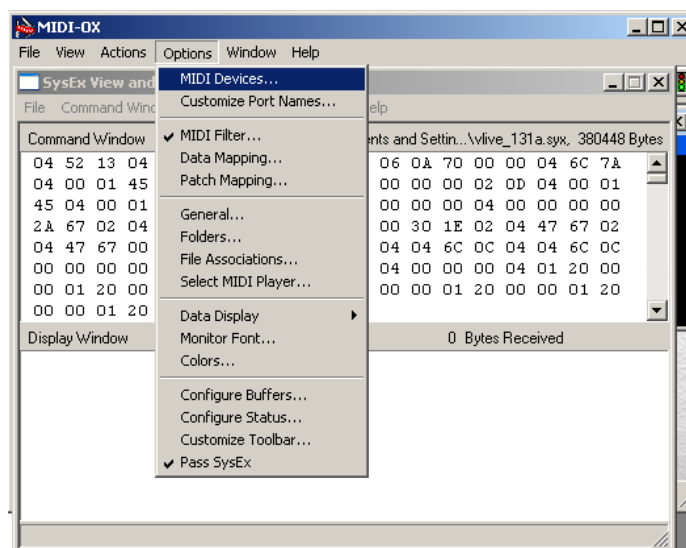


Step 1: Go to [www.midiox.com](http://www.midiox.com) and download version 7.0. If you have an older version of MIDI-OX already installed its most likely OK to use that one.

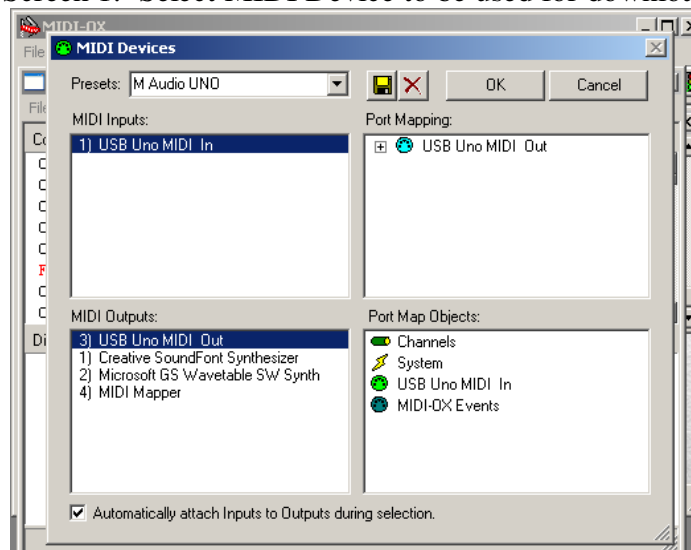
Step 2: Install the MIDI-OX software on your computer.

Step 3: Double click the VoiceLive2 software (.syx file). This should open up MIDI-OX.

Step 4: Select the MIDI device you will be using to upload the software to your VoiceLive2 unit. Screens 1 and 2 show where this can be selected. Note that we use an M-Audio USB UNO device here at TC-Helicon. Any configurable MIDI output device should work.

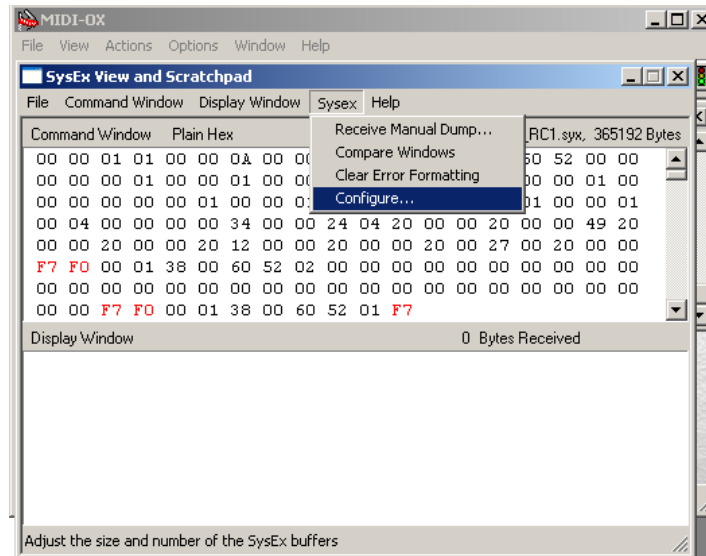


Screen 1: Select MIDI Device to be used for download

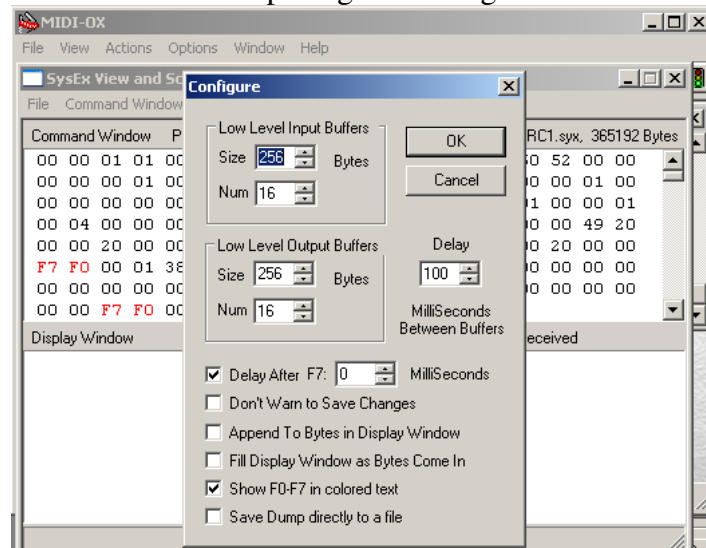


Screen 2: Highlight MIDI device to be used

Step 5: Configure MIDI-OX buffer sizes for MIDI download. Screens 3 and 4 show how this is done. Make sure all the settings in the configure window are the same as shown in screen 4 or the MIDI update might not work.



Screen 3: Opening the Configure menu

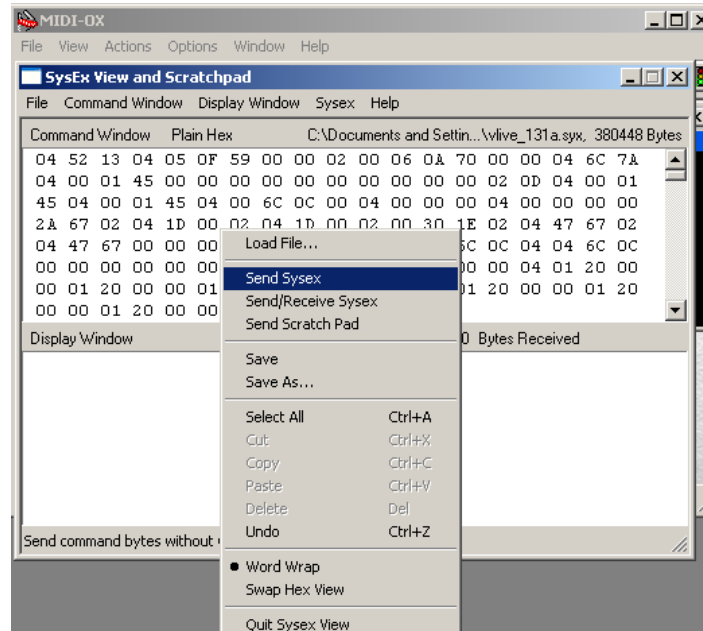


Screen 4: Configuration settings

Step 6: Connect your MIDI output device to the VoiceLive2 MIDI input and power up the unit. Wait for the unit to boot past the opening screen into a preset. **Note: The USB input connector on the VoiceLive2 must not be connected for a MIDI update.**

Step 7: Right click the main SysEx window and select “Send Sysex” as shown in Screen 5. At this point the VoiceLive2 unit will start accepting the new software. The LEDs on the unit should change to let you know that the unit is accepting the software. Once the download is finished, the unit will flash some LED’s then re-boot. If it doesn’t re-boot

on its own the software download was not successful and you might have to adjust some of the configuration settings depending on the problem.

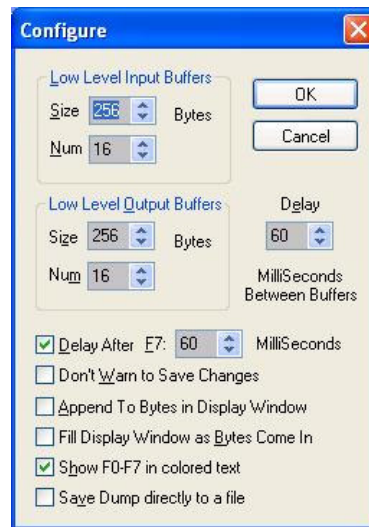


Screen 5: Send Sysex

Step 8: Confirm that the upload worked by checking the build number on boot-up.

### Troubleshooting:

-If the update stops during the update and MIDI-OX gives a communication error you may need to adjust the Configuration settings as shown in Screen 4. Try adjusting the settings to those shown below.



Configuration Settings 2

-Sometimes the unit may take 5-10 minutes to re-boot after the update. If the unit has not re-booted into normal operation after this time then unplug the unit and attempt the update again. Try adjusting the Configurations settings.

-If the unit does not accept the update on the first try then try the update again, if the unit is responding by blinking LEDs while the update is being sent than an update should be possible.