

Service Note		
Products	Description:	Service note no.
System 6000 MKII	Fuse changed from 2A to 3,15AT H	SNo-T0163

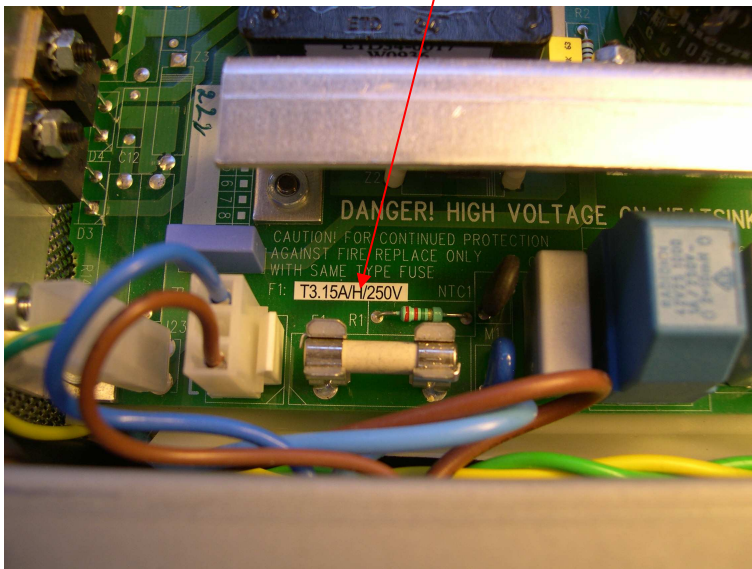
Reason for note:

We have encountered a few incidents where the fuse in the **System 6000 MKII** PSU has blown.

In our production we have changed from the former 2A fuse to a 3,15 AT H fuse in the MKII version. The System 6000 (MKI) is still ok with the 2 AT fuse!

Actions:

For System 6000 **MKII** which have a 2 AT fuse, this fuse must be changed to a 3,15 AT H type, (TC stock no 343030011). Furthermore a label (TC stock no 600134011) must be placed on the PCB as shown below.



IMPORTANT:

Please handle this repair as a standard repair.
This repair should only be carried out by skilled technicians.