

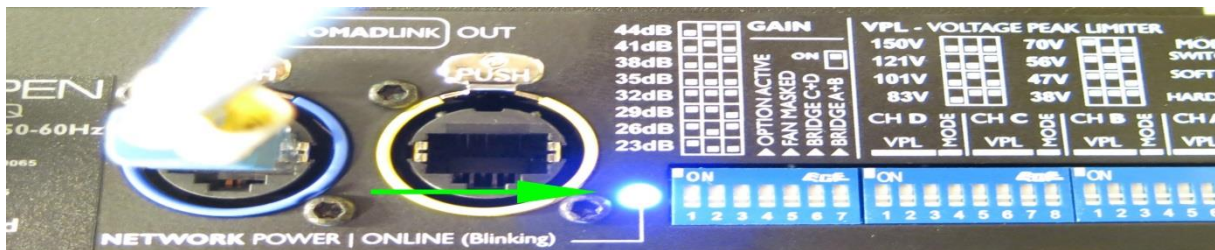
INSTRUCTION ON HOW TO CHANGE THE SERIAL NUMBER ON AN AICO-BOARD

Before you use this software be sure that you have mount a correct AICO-board.

This is most important because some of our product can have up to 5 different boards depending on what revision is used in the unit when it manufactured. If you don't use the correct board, the unit will BREAK so make sure that you have checked the tech server before mounting a new board.

To be able to change the serial number on an AICO-board you most connect it to a NLB60E (Nomadlink bridge and network controller) if you don't have one you can order it from LAB.Gruppen if you don't have the possibility to program the serial number you will have to order a programed board from LAB.Gruppen. Make sure to send the serial number together with the order.

1. Connect a network cable from the NLB bridge. Make sure that the blue led lights up. The amp doesn't need to be powered on



2. Extract the AICO serial number assignment folder

Name	Date modified	Type	Size
AICO serial number assignment	2013-12-19 16:12	Application	1 855 KB
AICO serial number assignment	2013-12-19 16:14	Compressed (zipp...	886 KB

INSTRUCTION ON HOW TO CHANGE THE SERIAL NUMBER ON AN AICO-BOARD

3. Open the AICO serial number assignment program

Name	Type	Compressed size	Password ...	Size	Ratio	Date modified
AICO serial number assignment	Application	886 KB	No	1.855 KB	53%	2013-12-19 16:12

4. Connect to the subnet assigned by the NLB bridge

AICO serial number assignment v1.17.0

Device

From device

Model:

PSU:

Serial:

Version:

Boot ver.:

Booted

EEPROM CRC valid

To device

C88:4

Network

Subnet #: 3

Node #: 1

Options

Allow barcode reader to update identity

Update "To device" when device information is refreshed

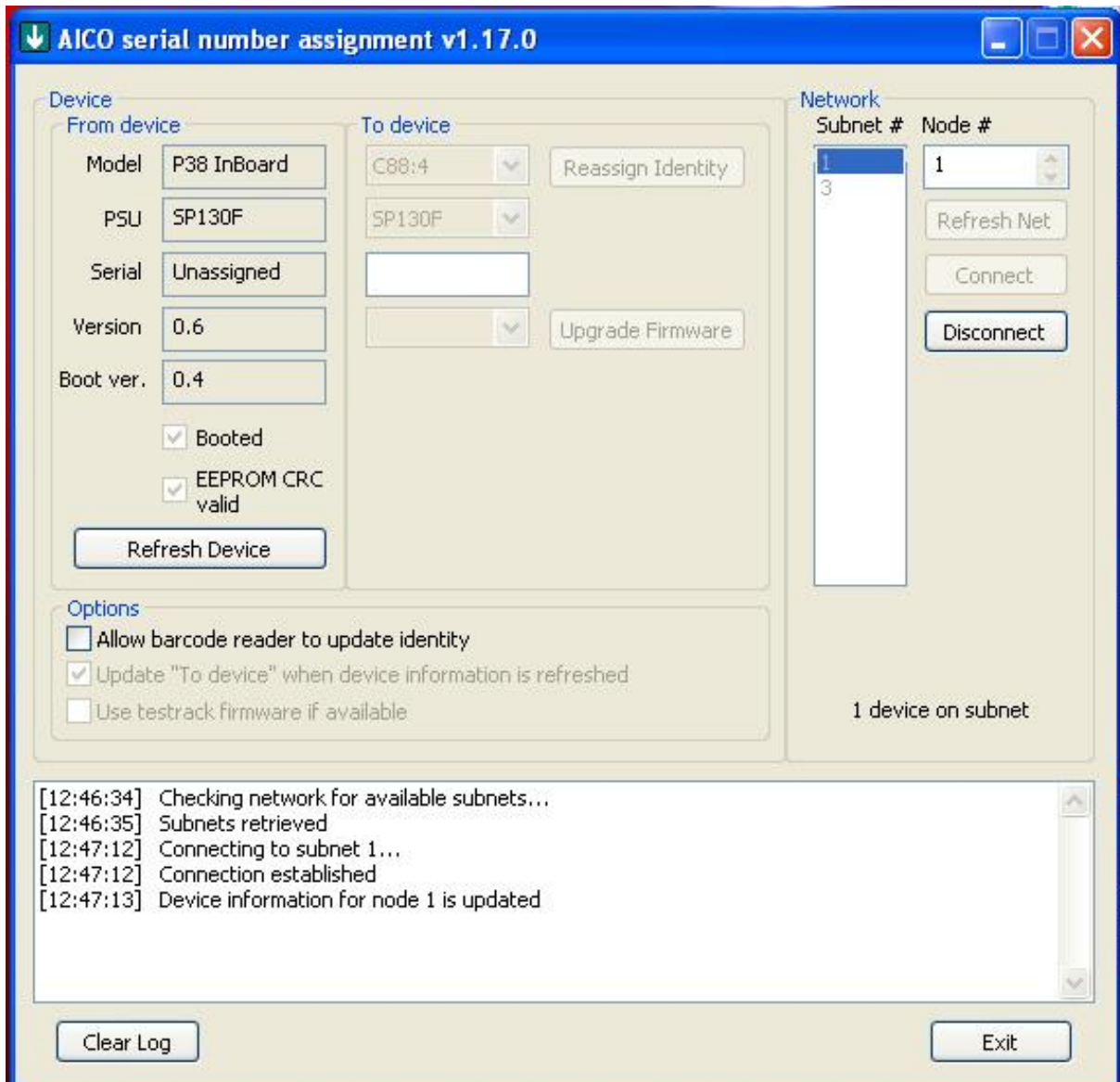
Use testrack firmware if available

[12:46:34] Checking network for available subnets...

[12:46:35] Subnets retrieved

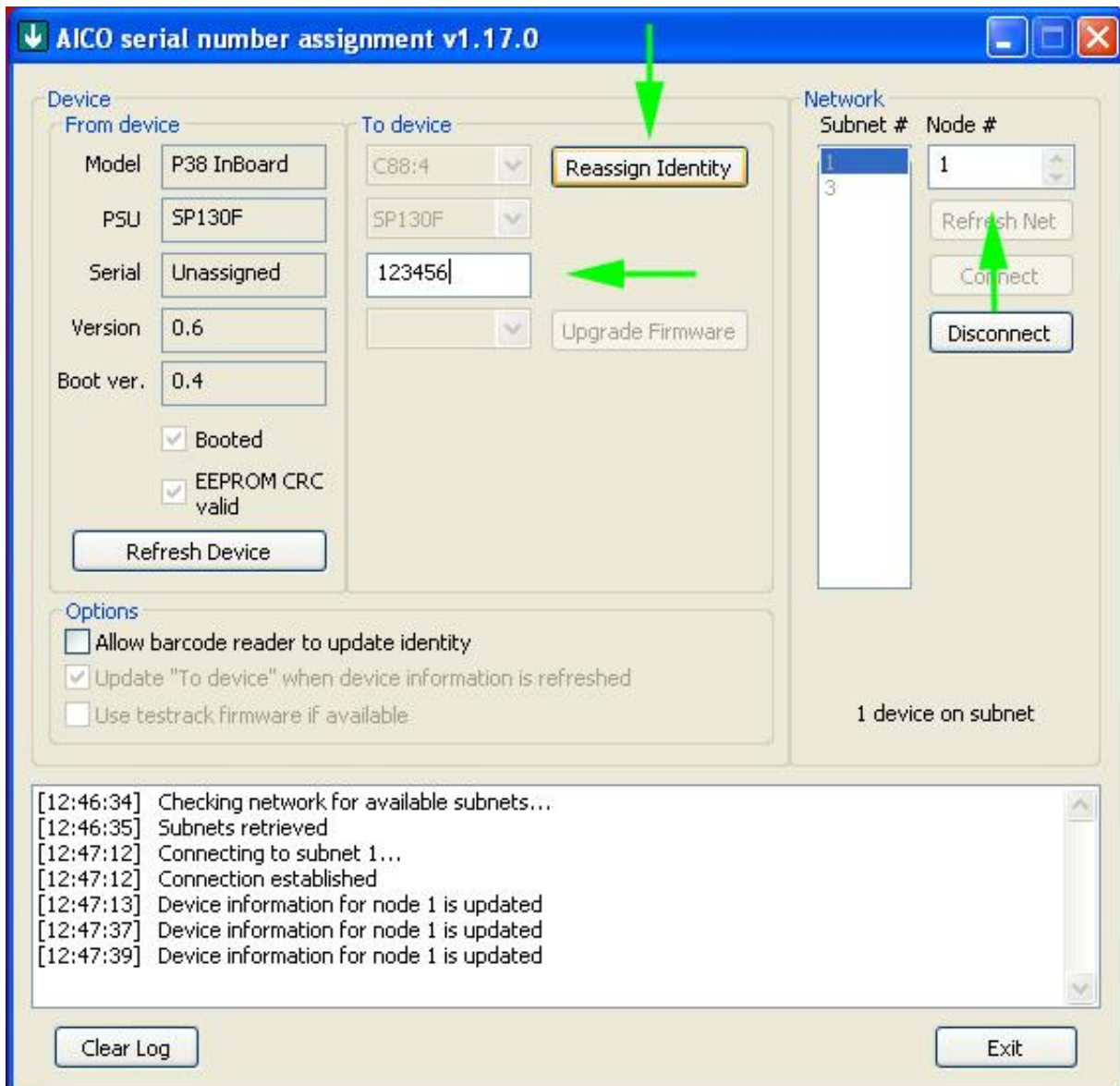
INSTRUCTION ON HOW TO CHANGE THE SERIAL NUMBER ON AN AICO-BOARD

5. Modell, PSU, serial version and boot version should appear



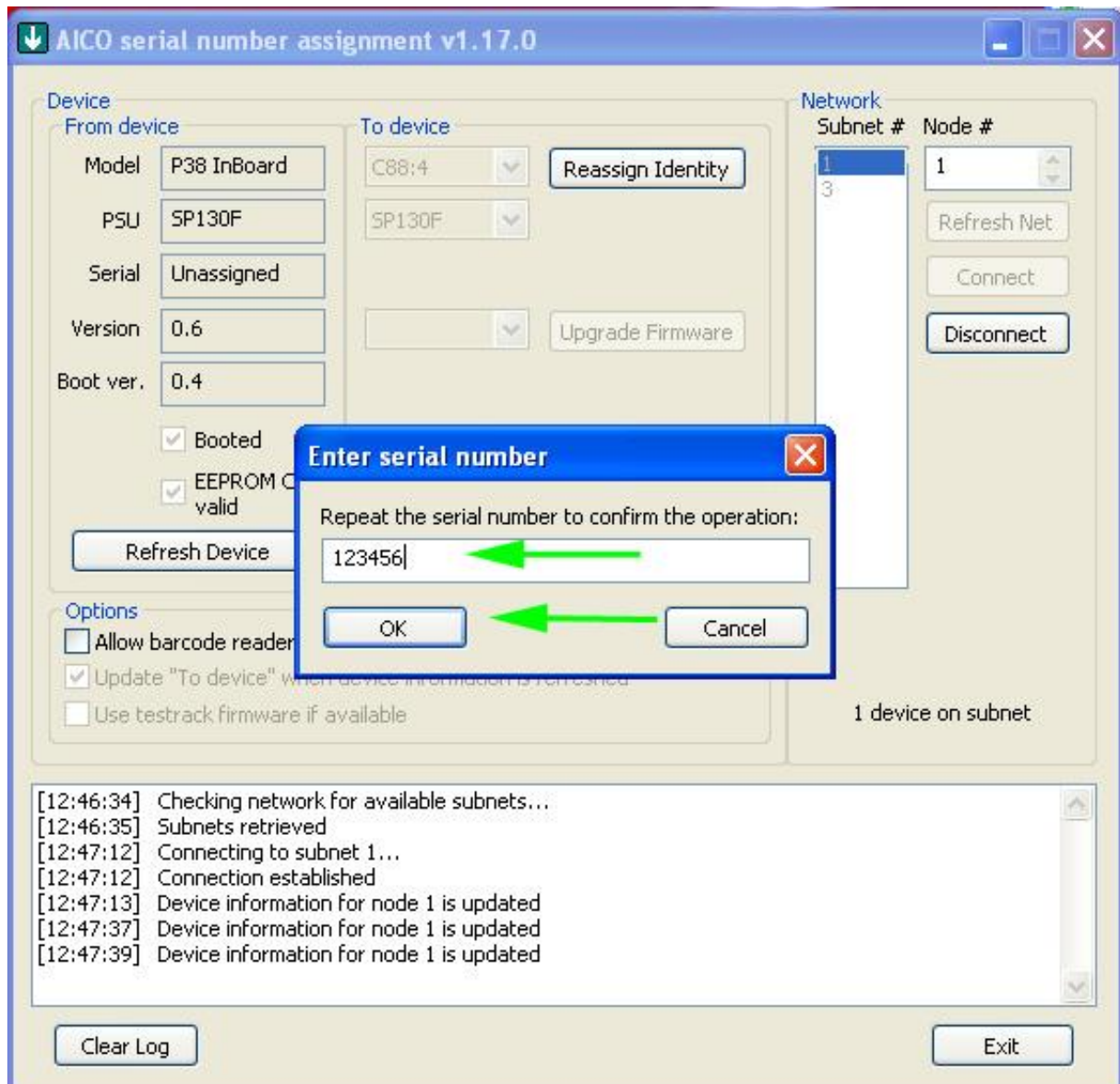
INSTRUCTION ON HOW TO CHANGE THE SERIAL NUMBER ON AN AICO-BOARD

6. The program should show that you are connected to a Node.
Write in the serial number on your back panel, you can also find the serial number inside the amp. Then press reassign identity



INSTRUCTION ON HOW TO CHANGE THE SERIAL NUMBER ON AN AICO-BOARD

7. A new window should appear to repeat the serial number to make sure that you have typed the correct number. Press ok



INSTRUCTION ON HOW TO CHANGE THE SERIAL NUMBER ON AN AICO-BOARD

8. Make sure that the log says that the identity was successfully changed. You are done

