

Technical Service Bulletin No. 17

Created by: Lab.gruppen AB Service Department

Date: 101222

Reference no: Diffuse display glass on listed LM 26 units.

Affected models

Following models are affected by this technical service bulletin:

LM 26

With Serial numbers:

37001145, 37001150, 37001163, 37001165, 37001166, 37001167, 37001168, 37001169,
37001170, 37001171, 37001172, 37001173, 37001174, 37001175, 37001177, 37001178,
37001179, 37001180, 37001181, 37001182, 37001184, 37001185, 37001186, 37001187,
37001188, 37001189, 37001191, 37001192, 37001193, 37001194, 37001195

Affected boards/modules

ACUIB (the front panel glass detail)

Symptom

The problem is that the glasses got too much anti reflex treatment that makes them slightly too diffuse. The display appears to be slightly out of focus. There is no functional problem with the units and they do not have any other problems.

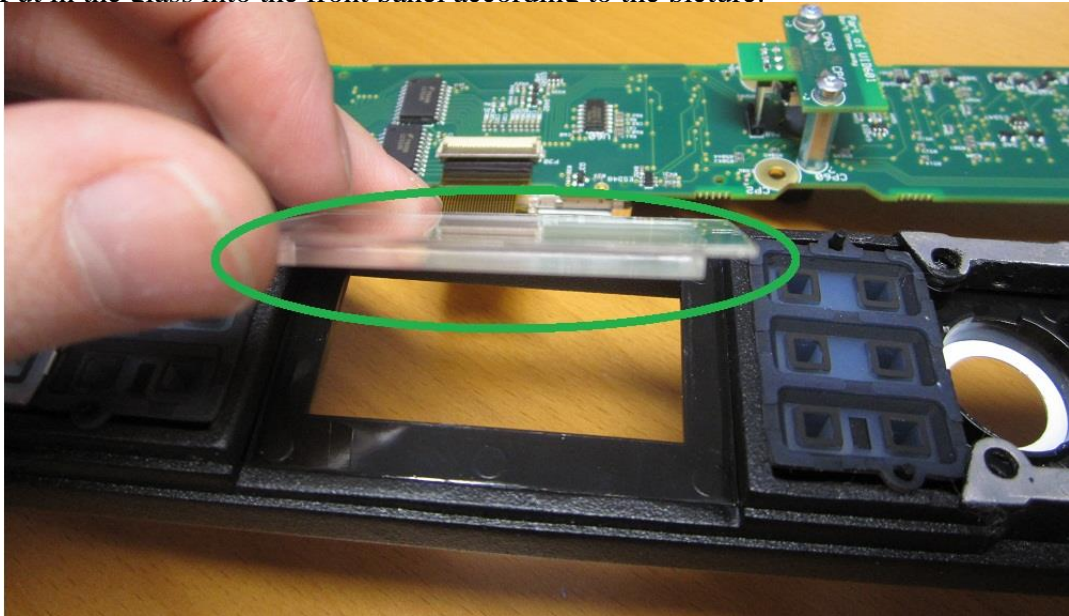
Solution

Change the display glass component to the new version of ACUID_02. This is a glass with correct anti-reflection.

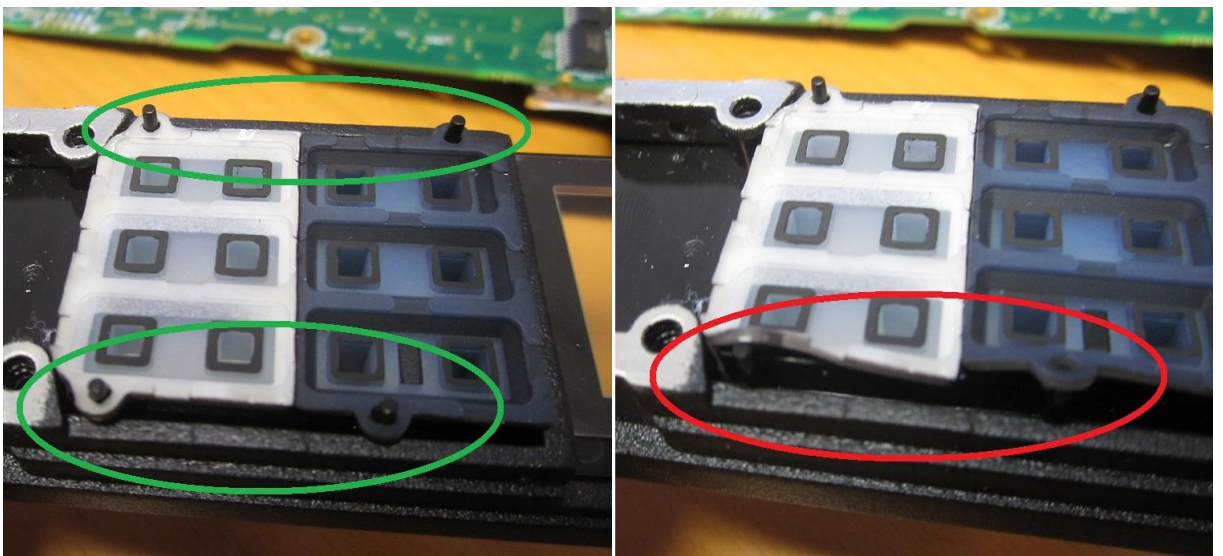
Note

The whole front panel needs to be disassembled in order to exchange the glass. Important instructions when re-assembling the front panel after glass exchange:

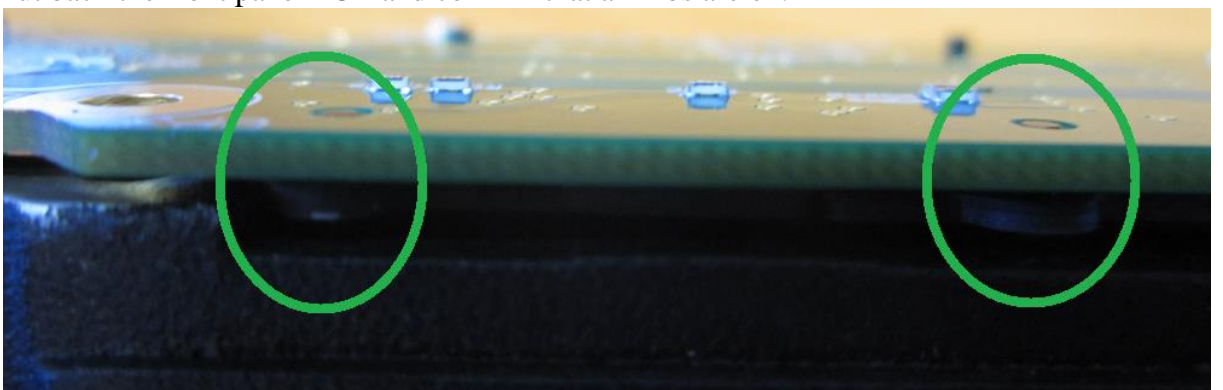
1. Put in the glass into the front panel according to the picture:



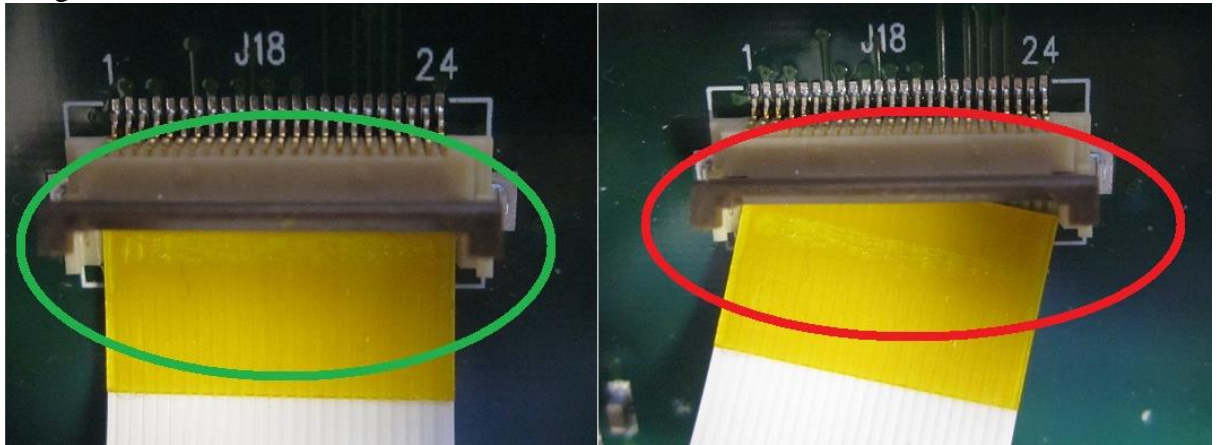
2. All nibs must pass the holes in the silicon keys on all positions.



3. Put back the front panel PCB and confirm that all nibs are ok.



4. Mount the front panel to the LM26 and put back the flat cable on the LM26 PCB straight into the flat cable connector.



Service repair report forms

Write “Technical Service Bulletin no.17” in the service repair report form, column “Repair Remedy” besides other normal repair information.

History

Date	Created By	Status	Bulletin no.	Comment
101222	KHG	OLD	17	
20140403	ALRIQ	SHARP	17	service repair report form information added