

# Technical Service Bulletin No. 22

**Created by: Lab.gruppen AB Service Department**

**Date: 2012-04-11**

**Reference no: Protective coating on SP200PFC**

It is highly recommended to implement this service bulletin as preventative maintenance when the unit is serviced for another issue.

## **Affected models**

PLM 20000Q

## **Affected boards/modules**

Describe which boards/modules this technical issue affects:

SP200PFC07e-F01  
SP200PFC08a-F01  
SP200PFC08c-F01  
SP200PFC08d-F01  
SP200PFC08e-F01  
SP200PFC08f-F01  
SP200PFC08g-F01  
SP200PFC08h-F01  
SP200PFC08i-F01  
SP200PFC08j-F01  
SP200PFC08k-F01  
SP200PFC08l-F01  
SP200PFC09a-F01  
SP200PFC09b-F01  
SP200PFC09c-F01  
SP200PFC09d-F01  
SP200PFC09e-F01  
SP200PFC09f-F01  
SP200PFC09g-F01  
SP200PFC09h-F01  
SP200PFC09i-F01

---

## **Symptom**

---

No symptoms, this is just a preventative action as the power supply can be sensitive for;

- Condensing water
- High air humidity

This can lead to severe damage on the power supply.

---


## **Solution**

---

Coat the SP200PFC board with acrylic spray. See further instructions.

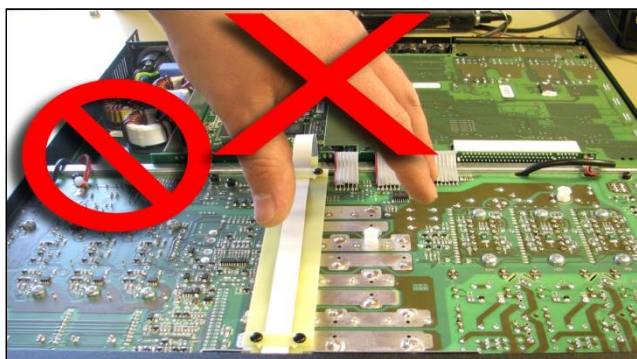
## Instructions

### Needed material

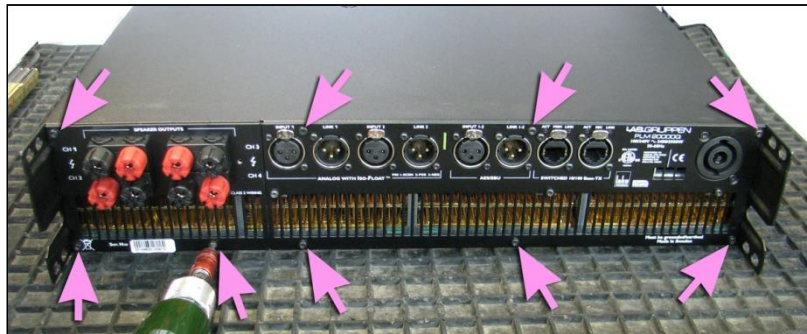
Part No.	Description	Info	Pos
<u>HumiSeal 1B73</u>	<p>Following can be <b>ordered</b> from the <u>factory</u>:</p> <p>Transparent insulating and protective acrylic coating. It is possible to solder through the coating. Acrylic Conformal Coating <a href="http://www.humiseal.com">www.humiseal.com</a></p> <p><a href="http://www.humiseal.com/downloads/1B73_Aerosol.pdf">http://www.humiseal.com/downloads/1B73_Aerosol.pdf</a></p>		
N/A	<p>Pre-cleaning solvent for PCB, to remove greases and flux residue.</p> <p><u>Factory recommended:</u> Swab the PCB with <b>Isopropyl alcohol</b></p>	<p>Example:</p> 	

### Actions

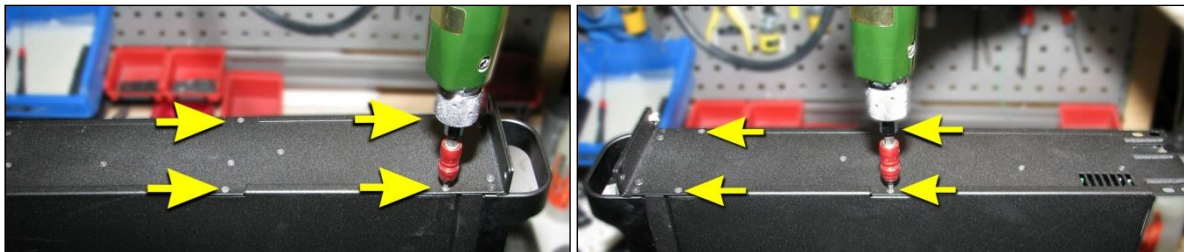
		Info	Pos
1.	<p><b>Amplifier mains plug disconnected.</b></p> <p><b>Wait 10 minutes in order to let the capacitors discharge.</b></p> <p><b>Observe! Do not touch PCB without being ESD-protected.</b></p>		



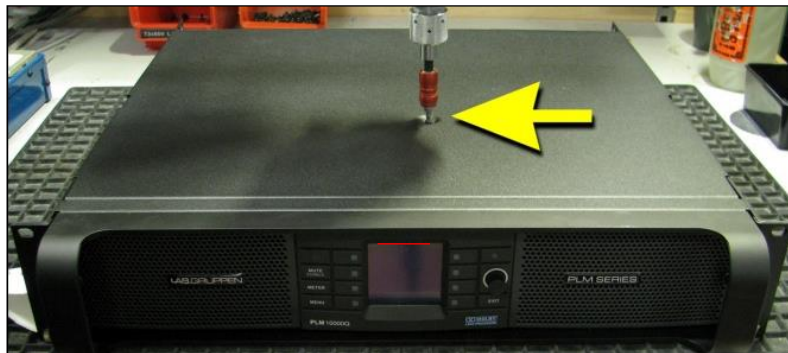
2.	Remove screws from the rear panel.		
----	------------------------------------	--	--



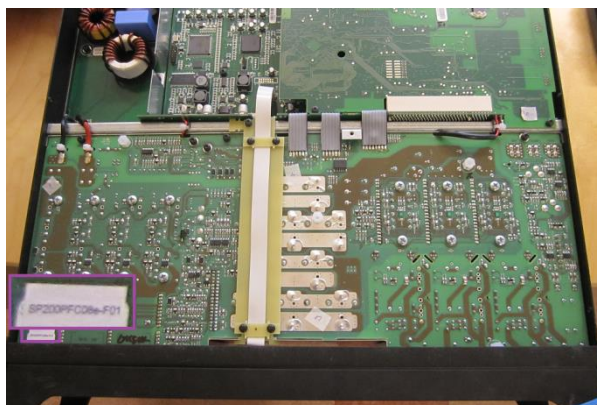
3.	Remove screws from the side panels.		
----	-------------------------------------	--	--



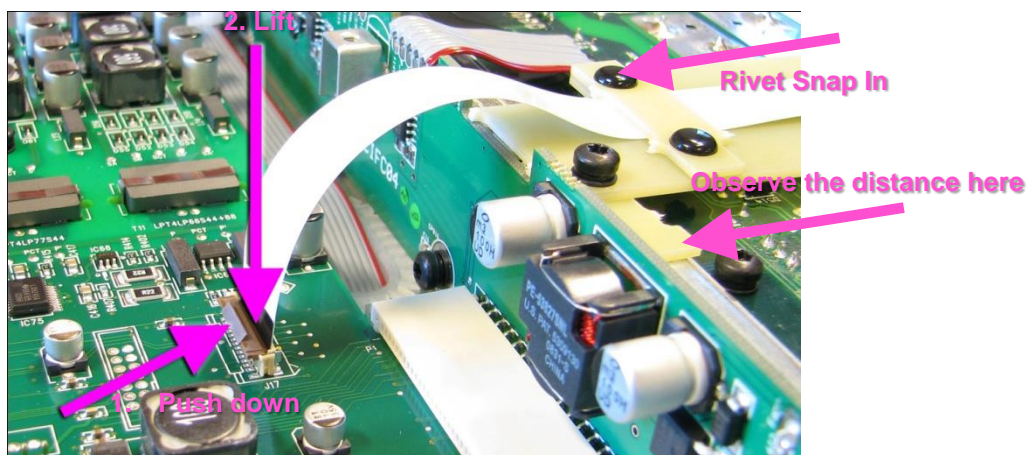
4.	Remove screw from the top cover. Remove the cover.		
----	--	--	--



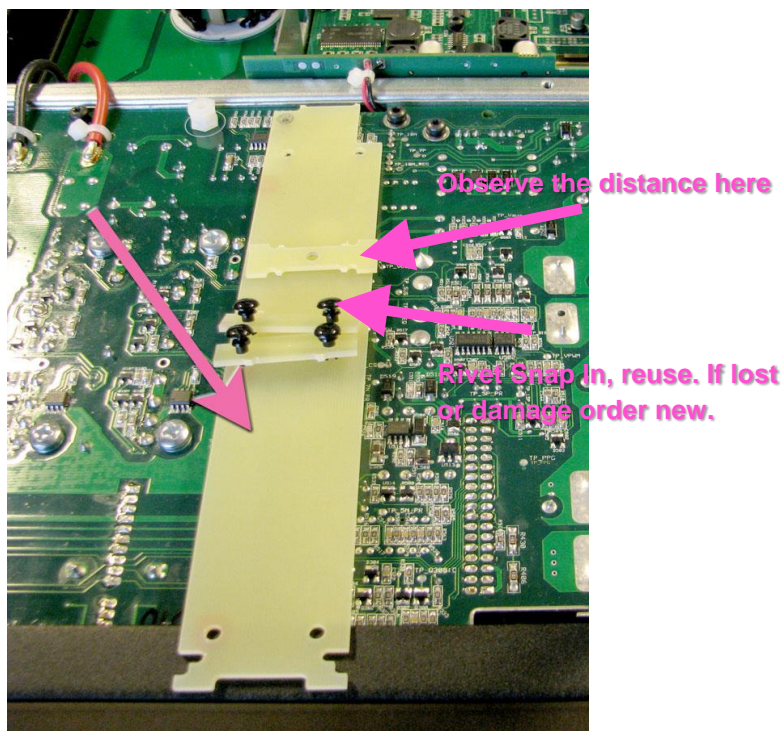
5.	Confirm if the SP200PFC board is covered by this bulletin. See section “ <i>Affected boards/modules</i> ” for BOM’s affected. If the sticker in the lower left corner does not match the listed boards, reverse actions 2-4. If covered, continue.		
----	--	--	--



6.	Remove screw from the bottom cover. Remove the cover.		
7.	Remove the ribbon (flat cable) and the laminate. Take care so the flat cable doesn’t come off in the other end attached to the front panel!		



8.	Carefully lift the laminate and push in the middle of the “Rivet Snap In” pin from the backside of the rivets to lift the laminate bridges.		
----	---	--	--



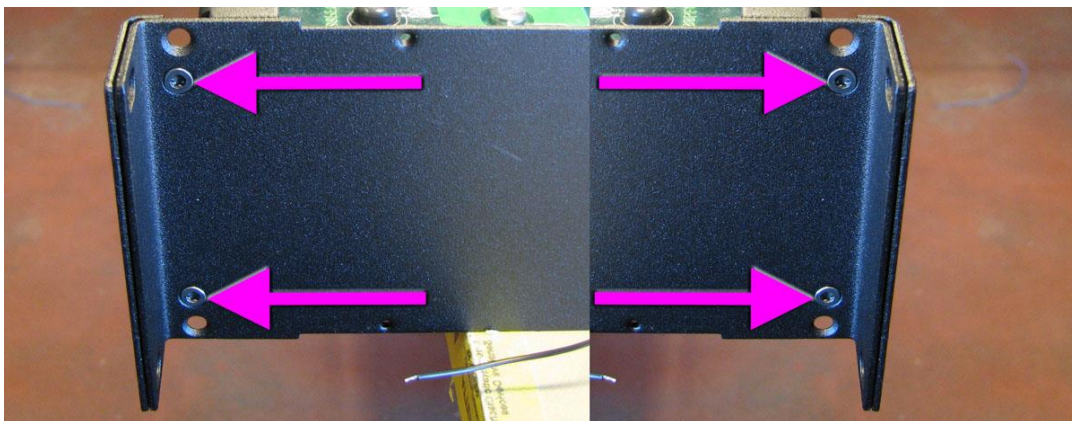
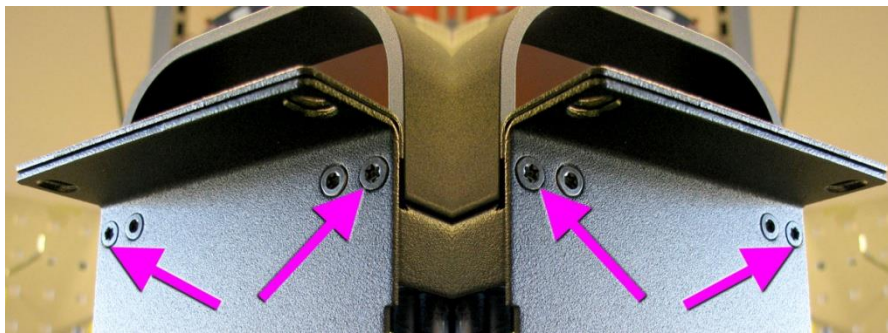
9.	Remove both dust clips.		
----	-------------------------	--	--



10.	Remove both dust filters.		
-----	---------------------------	--	--



11.	Remove screws from the side panels.		
-----	-------------------------------------	--	--



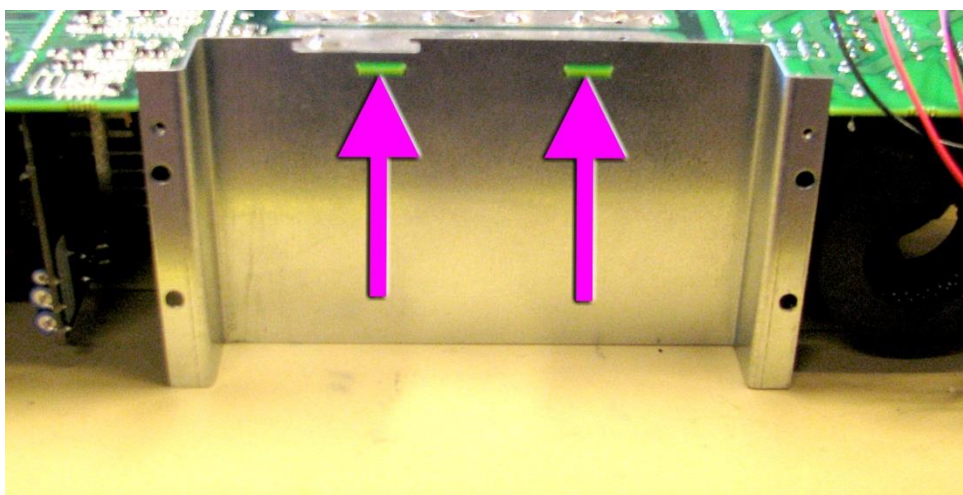
12.	Remove screws from the front panel.		
-----	-------------------------------------	--	--



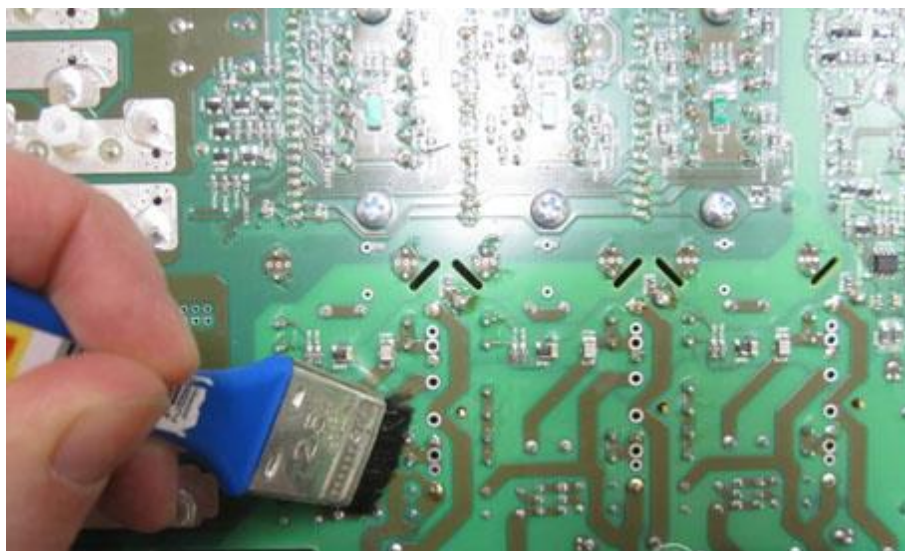
13.	Remove the front panel from the chassis.		
-----	--	--	--



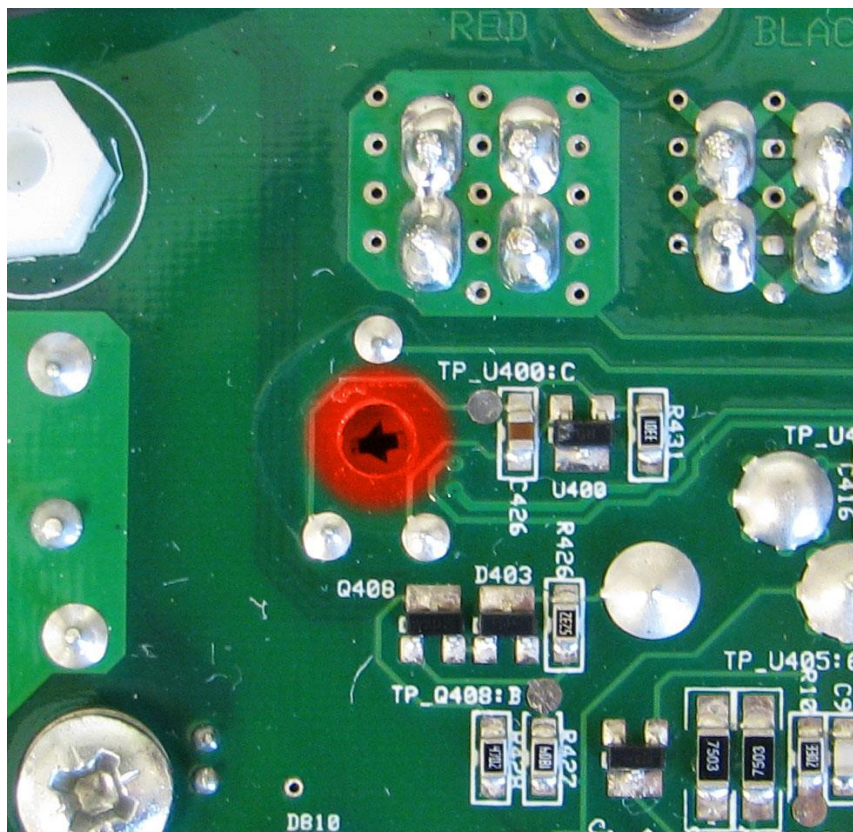
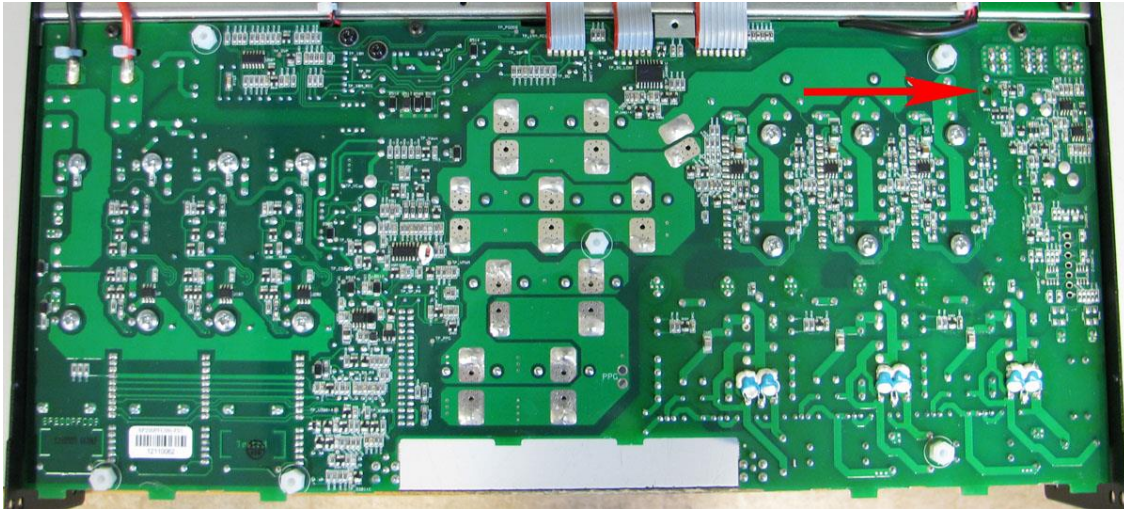
14.	Remove the magnetic shield.		
-----	-----------------------------	--	--



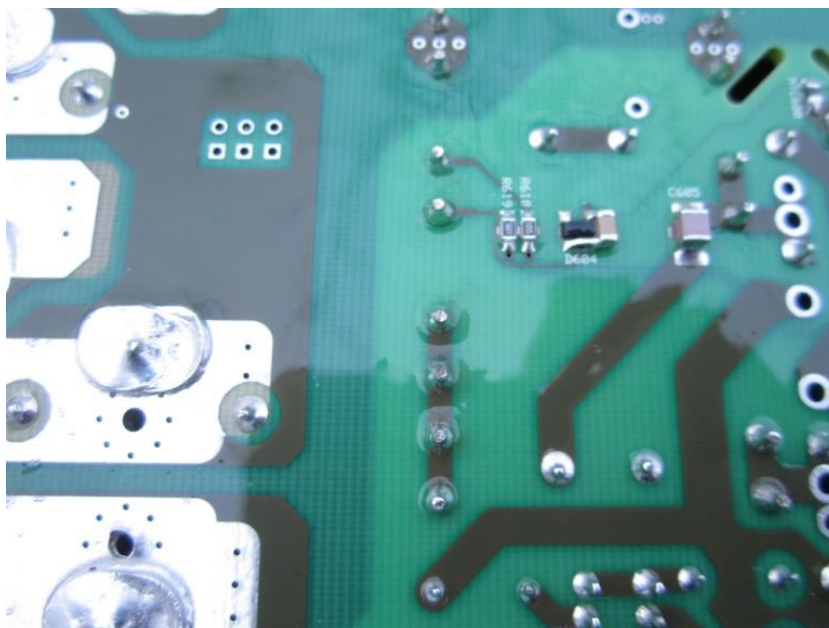
15.	<p>Swab the PCB with isopropyl alcohol to clean it from grease and flux residue. Wait for the isopropyl alcohol to evaporate.</p> <p><b>This must be done in a well-ventilated area.</b></p>		
-----	--	--	--



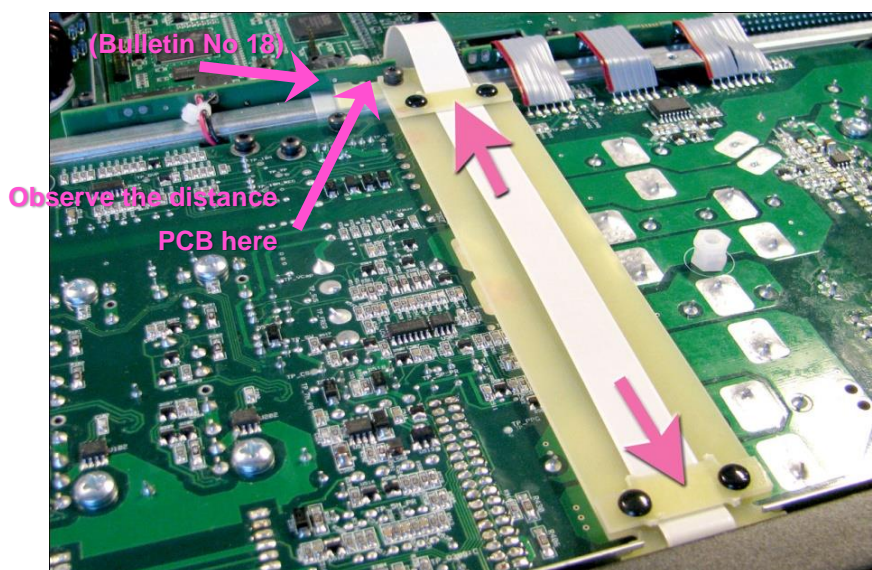
16. Mask red marked area below to avoid coating in potentiometer VR400, also mask surrounding PCB's and mechanics.



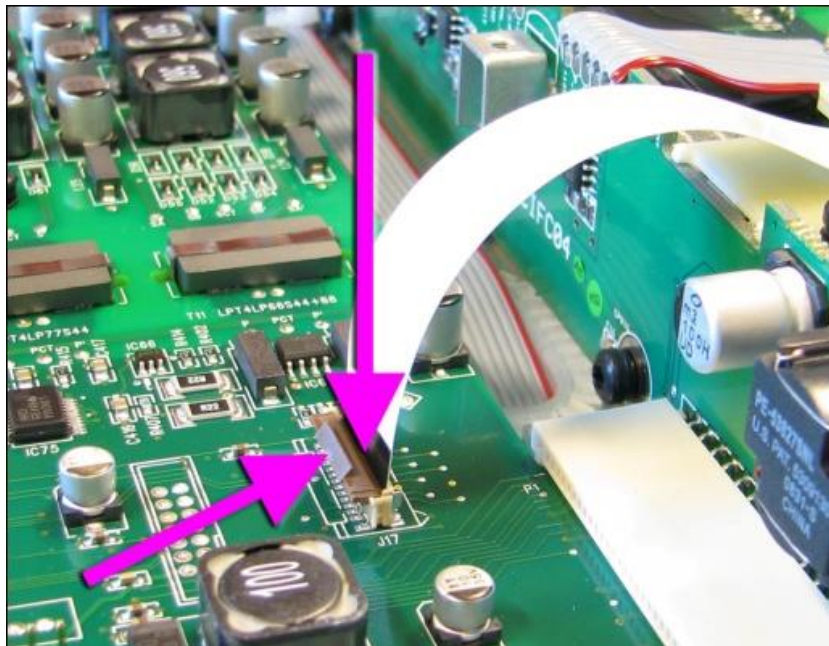
17.	Spray with <b>HumiSeal 1B73</b> from a distance of 20 cm (or according to product specification). Spray richly and make sure that whole bottom side of the PCB is coated. <b>This must be done in a well ventilated area.</b>		
18.	Newly coated PCB (before it dried).		



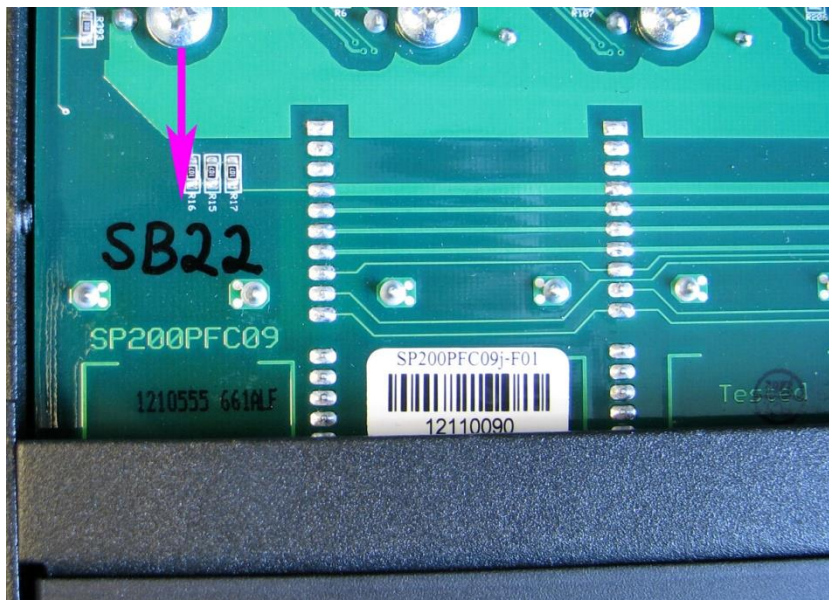
19.	Reverse actions 9-14.		
20.	Remount the laminate clips.		



21.	Remount the flat cable.		
-----	-------------------------	--	--



22.	Mark the PCB with SB22.		
-----	-------------------------	--	--



23.	Reverse actions 2-4 & 6.		
-----	--------------------------	--	--

## Service repair report forms

Write “Technical Service Bulletin no.22” in the service repair report form, column “Repair Remedy” besides other normal repair information.

## History

Date	Created By	Status	Bulletin no.	Comment
20111025	DABER	OLD	22	
20120411	LEARV	OLD	22	Mask information updated.
20140403	ALRIQ	SHARP	22	service repair report form information added