

Technical Service Bulletin No. 26

Created by: Lab.gruppen AB Service Department

Date: 110405

Reference no: Sense fault on PLM

Affected models

PLM Series (PLM 10000Q, PLM 14000 and PLM 20000Q)

Affected boards/modules

Only the following boards are affected:

PLM 10000Q:	DICO412c-F01 and all previous versions.
PLM 14000:	DICO412c-F02 and all previous versions.
PLM 20000Q:	DICO4B02e-F03 and all previous versions.

Symptom

There is an IC that can break after time which will lead to a "Sense fault" warning on the front panel display. With sense fault, no output metering is available neither on the front panel nor in the Lake Controller.

Solution

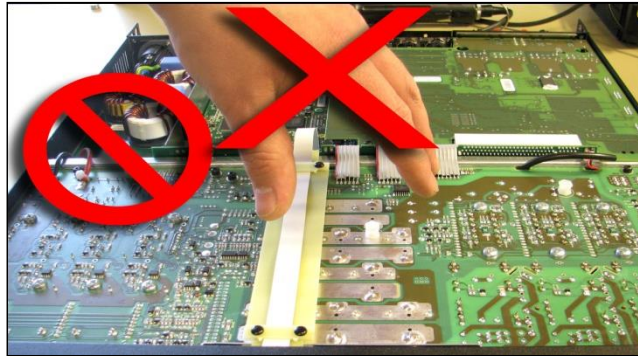
Replace IC U437 and resistor R571, R572 & R573.

1.1.1 Part list

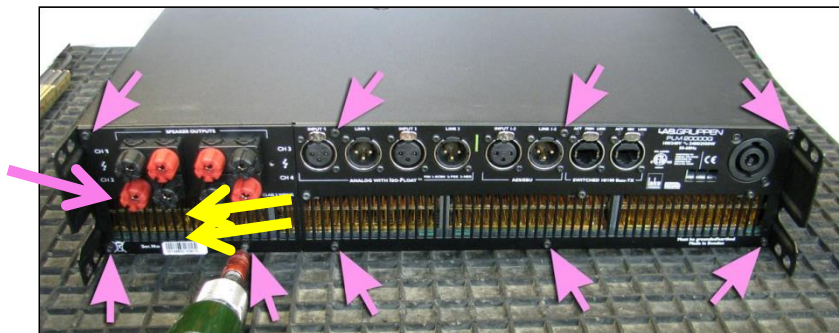
Part No.	Description	Amount	Pos. PCB	Nr
FAN3224TMX	IC dual gate driver FAN3224TMX SOIC-8	1	U437	1
18R.125W1%0805	Resistor 18R.125W 1% Surface Mounted 0805	3	R571, R572, R573	2

Instruction

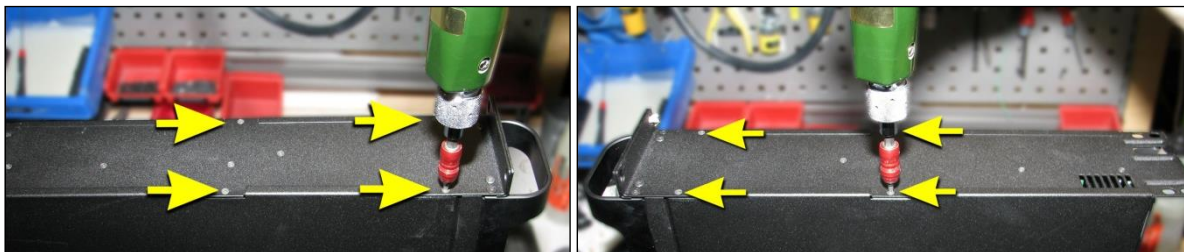
Moment	Pos PCB	Nr part list
1. Amplifier mains plug disconnected. Wait 10 minutes in order to let the capacitors discharge. Observe! Do not touch PCB without being ESD-protected.		



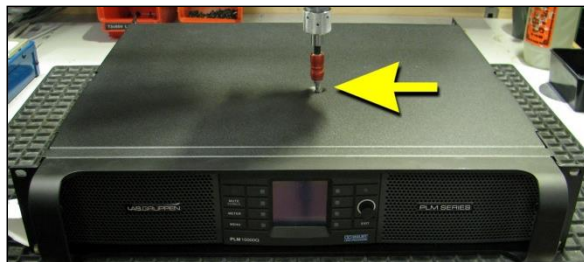
2. Remove screws from the rear panel. (The yellow arrows screws is for PLM 10000Q only).		
--	--	--



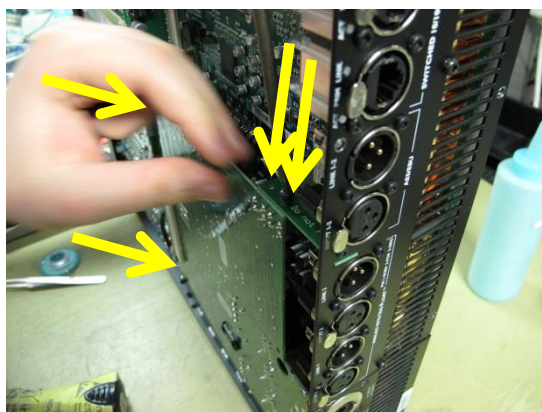
3. Remove screws from the side panels.		
--	--	--



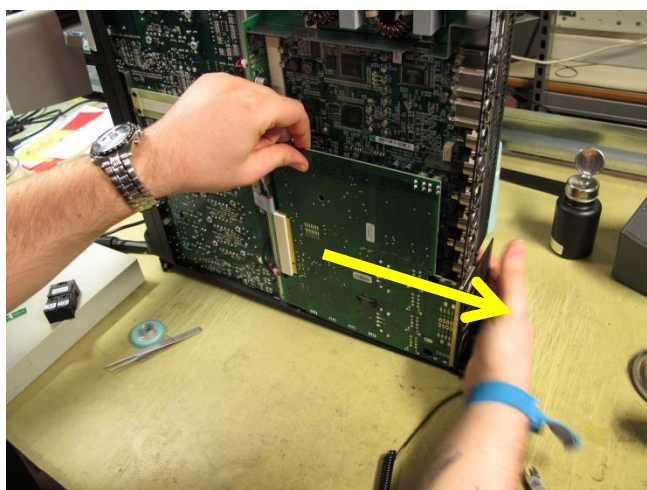
4.	Remove screws from the top cover. Remove the cover.		
----	---	--	--



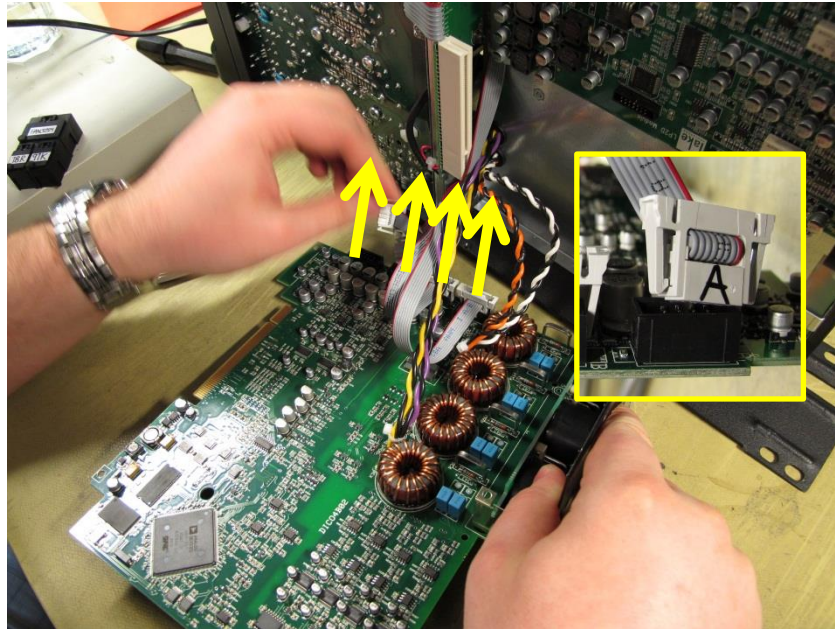
5.	Remove the screws holding the DICO support.		
----	---	--	--



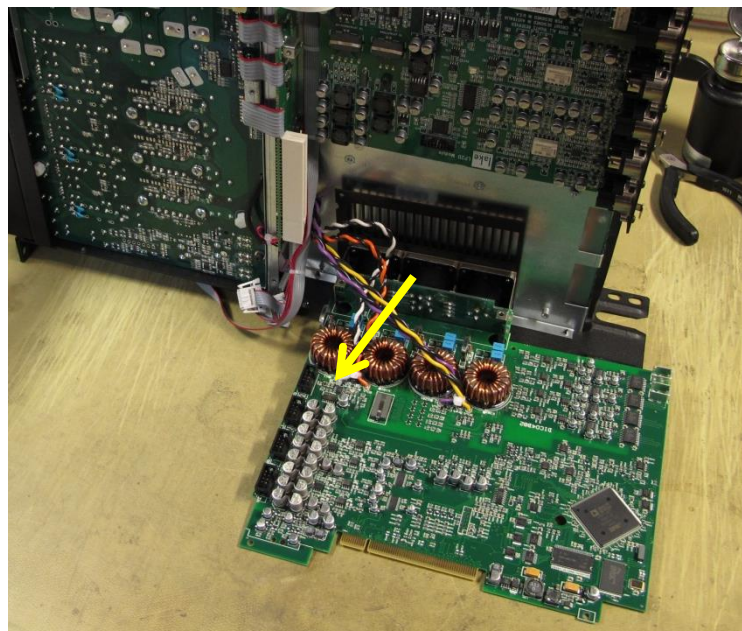
6.	Carefully remove the DICO board by pulling it straight out of the slot.		
----	---	--	--



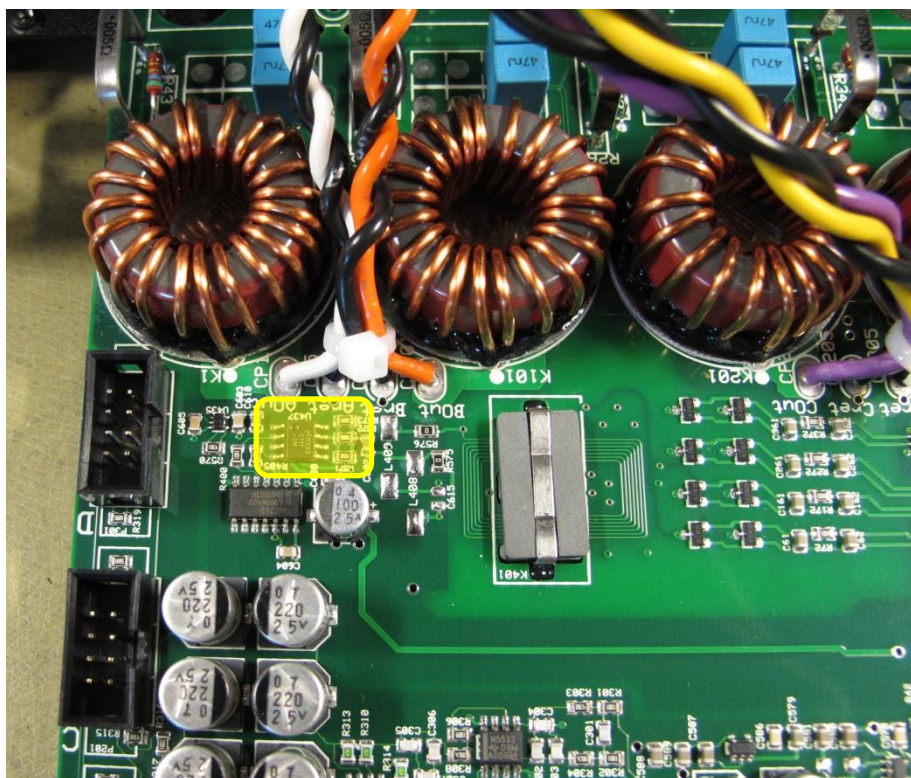
7.	Remove a ribbon cable, and confirm that it has the channel number written on the backside of the contact. If it doesn't, write it! Then do the same with the rest. For PLM 10000Q and 20000Q there are 4, for PLM 14000 there are 2.		
----	--	--	--



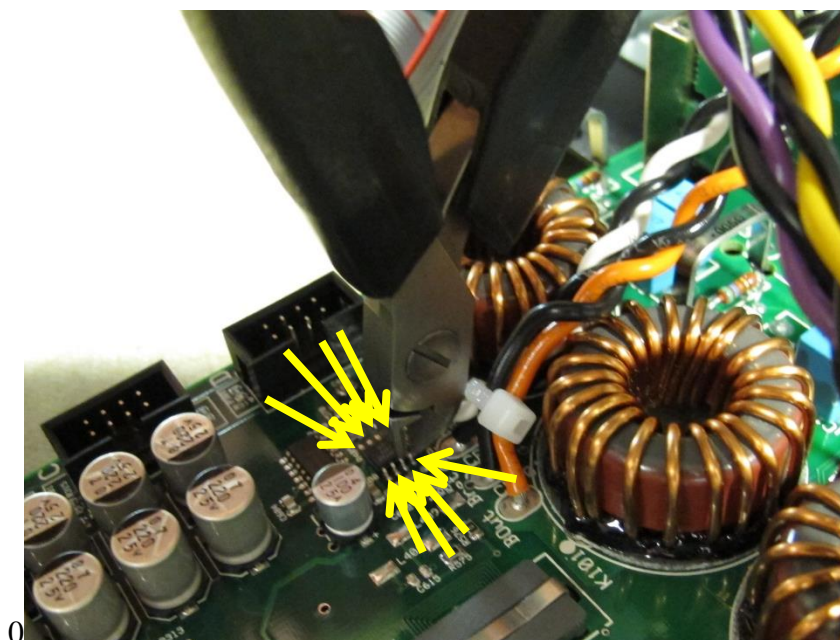
8.	Put down the DICO board as on the picture below. Arrow point to area of interest.		
----	---	--	--



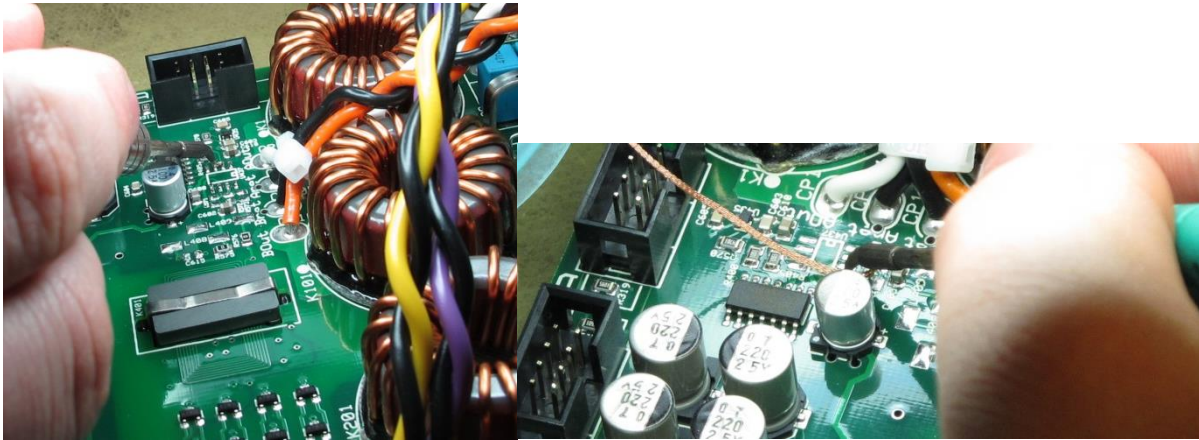
9.	Highlighted with yellow, area with U437, R571, R572 and R573.		
----	---	--	--



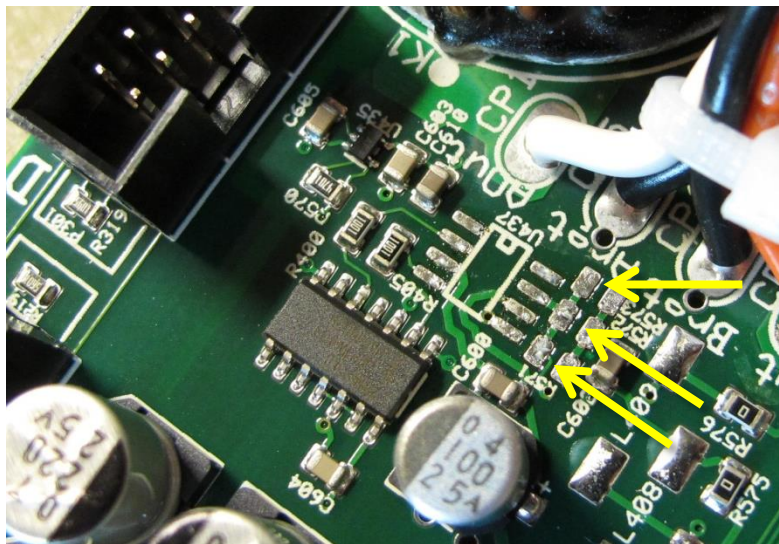
10.	Cut of the eight legs of U437.		
-----	--------------------------------	--	--



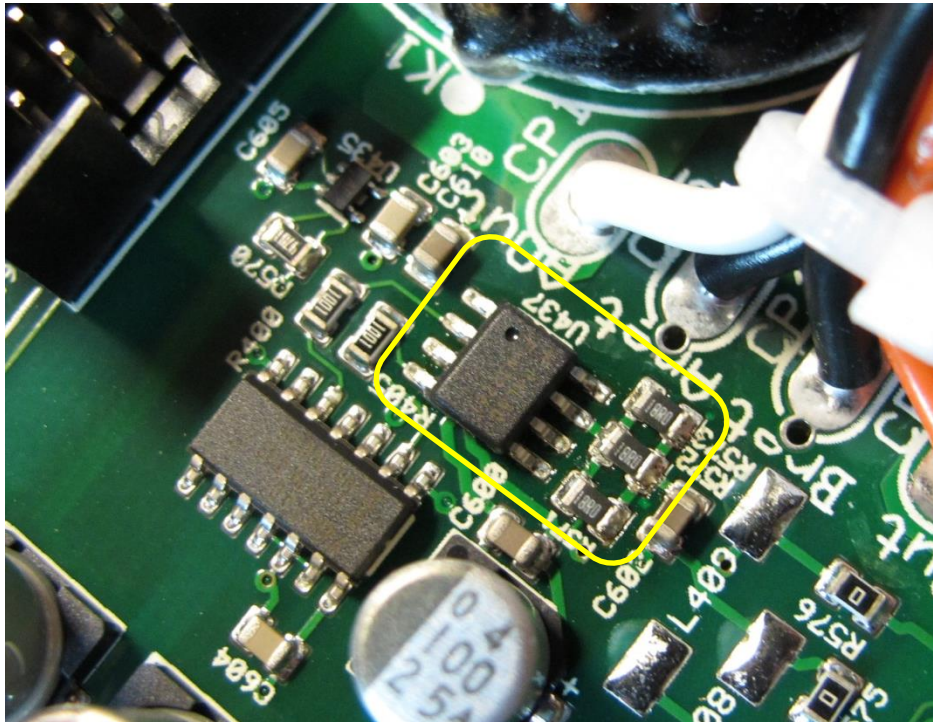
11.	Just lift away the IC, and clear the pads with soldering iron from the IC leg parts, and clean the pads from solder.		
-----	--	--	--



12.	Remove the resistors R571, R572 and R573.		
-----	---	--	--



13.	Mount and solder on the new components.	U437	1
		R571, R572, R573	2



14.	Redo step 7-2 in reversed order.		
-----	----------------------------------	--	--

Service Log Information

Write "Technical Service Bulletin no.26" in column "Repair Remedy" besides other normal repair information.

History

Date	Created By	Status	Bulletin no.	Comment
111108	LA	OLD	26	
20140408	ALRIQ	SHARP	26	Service repair report form information added