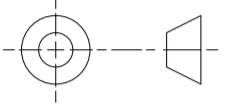


THIRD ANGLE PROJECTION



*** NOTE PRINT PRODUCT TYPE AND ***
INPUT/OUTPUT POSITIONS ON BOARD.

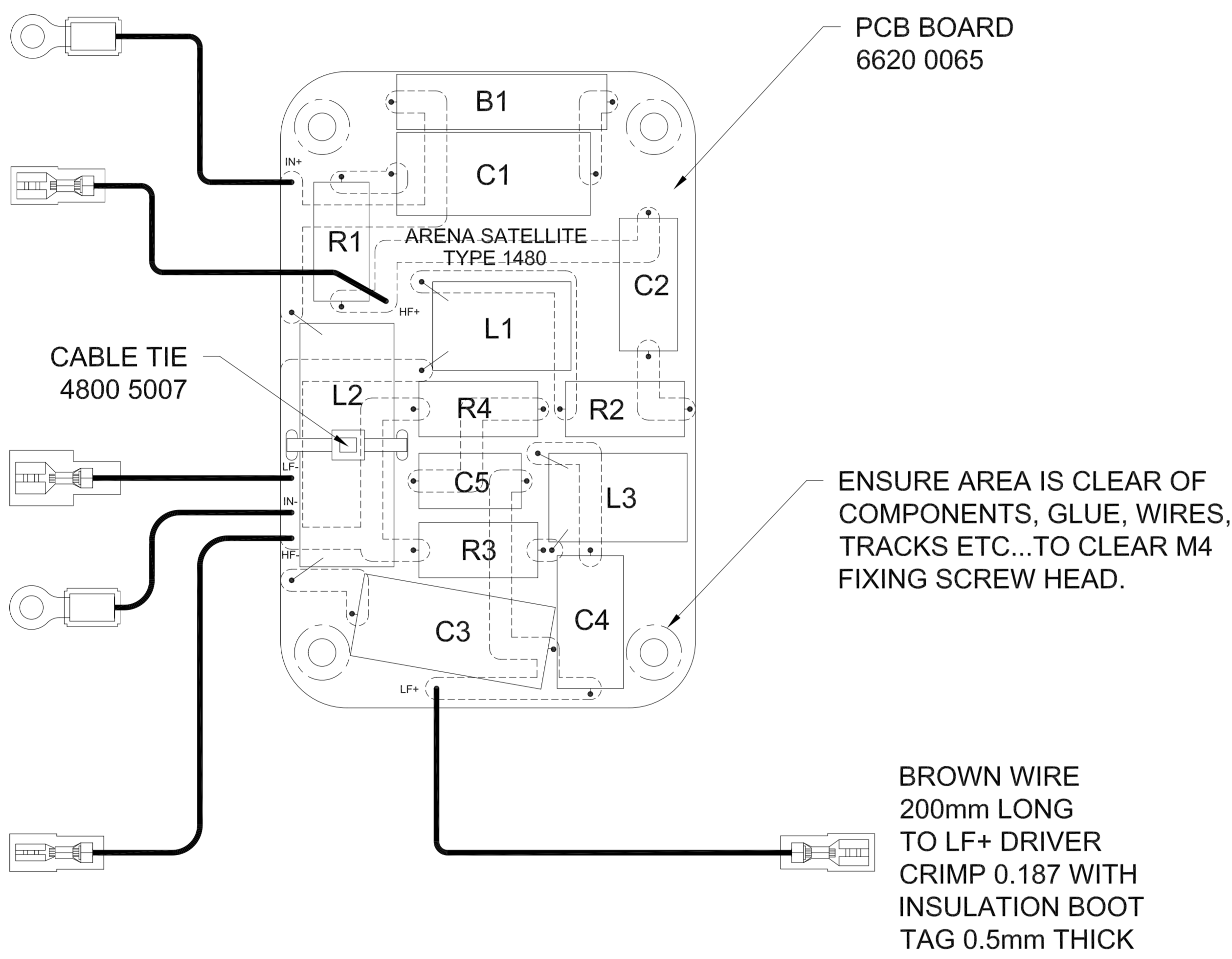
RED WIRE
150mm LONG
EYELET CRIMP M4
FITTED WITH
INSULATION BOOT
TO +IN TERMINAL

YELLOW WIRE
120mm LONG
TO HF+ DRIVER
CRIMP 0.187 WITH
INSULATION BOOT
TAG 0.8mm THICK

BLUE WIRE
200mm LONG
TO LF- DRIVER
CRIMP 0.250 WITH
INSULATION BOOT
TAG 0.8mm THICK

BLACK WIRE
200mm LONG
EYELET CRIMP M4
FITTED WITH
INSULATION BOOT
TO -IN TERMINAL

GREEN WIRE
150mm LONG
TO HF- DRIVER
CRIMP 0.110 WITH
INSULATION BOOT
TAG 0.8mm THICK



PCB BOARD
6620 0065

ENSURE AREA IS CLEAR OF
COMPONENTS, GLUE, WIRES,
TRACKS ETC...TO CLEAR M4
FIXING SCREW HEAD.

COPPER TRACKS SHOWN AS

*** COPPER TRACKS ON UNDERSIDE OF BOARD ***

NOTE:

1. ALL WIRES HIGH PURITY OFC (32/0.1)
2. ENSURE COMPONENTS ARE SECURELY FIXED IN PLACE USING HOT MELT, DESCRIPTIONS VISIBLE.
3. ALL ELECTRICAL CONNECTIONS TO BE SOLDERED.
4. ENSURE ALL COMPONENTS ARE WITHIN PCB BOARD.
5. BULB (B1) MUST BE SECURELY FIXED WITH HIGH TEMPERATURE SILICON.

B1	12V/21W	0.5ohm@25C	TANNOY P/N 3615 0046
R1	3R3/5W	5% WIREWOUND	
R2	4R7/5W	5% WIREWOUND	
R3	2R2/5W	5% WIREWOUND	
R4	2R2/5W	5% WIREWOUND	
C1	1u8	5% 250V POLYPROPYLENE	
C2	2u2	10% 100V MET. POLYESTER	
C3	150u	10% 50V BIPOLAR ELECT.	
C4	3u3	10% 100V BIPOLAR ELECT.	
C5	25u	10% 100V BIPOLAR ELECT.	
L1	0.5mH	DCR 1R0 AIR CORE BOBBIN 0.5mm WIRE DIA.	
L2	1.4mH	DCR 0R4 LAM CORE 41x8x6 1.0mm WIRE DIA.	
L3	0.15mH	DCR 0R5 AIR CORE BOBBIN 0.5mm WIRE DIA.	

Part No.
7300 0962

First used on
ARENA SATELLITE

Issues

A 01/03/04 BM
B 23/07/04 SW
ASSEMBLY
RE-DESIGNED.

C 19/08/04 SW
COMPONENT
VALUES MOD.

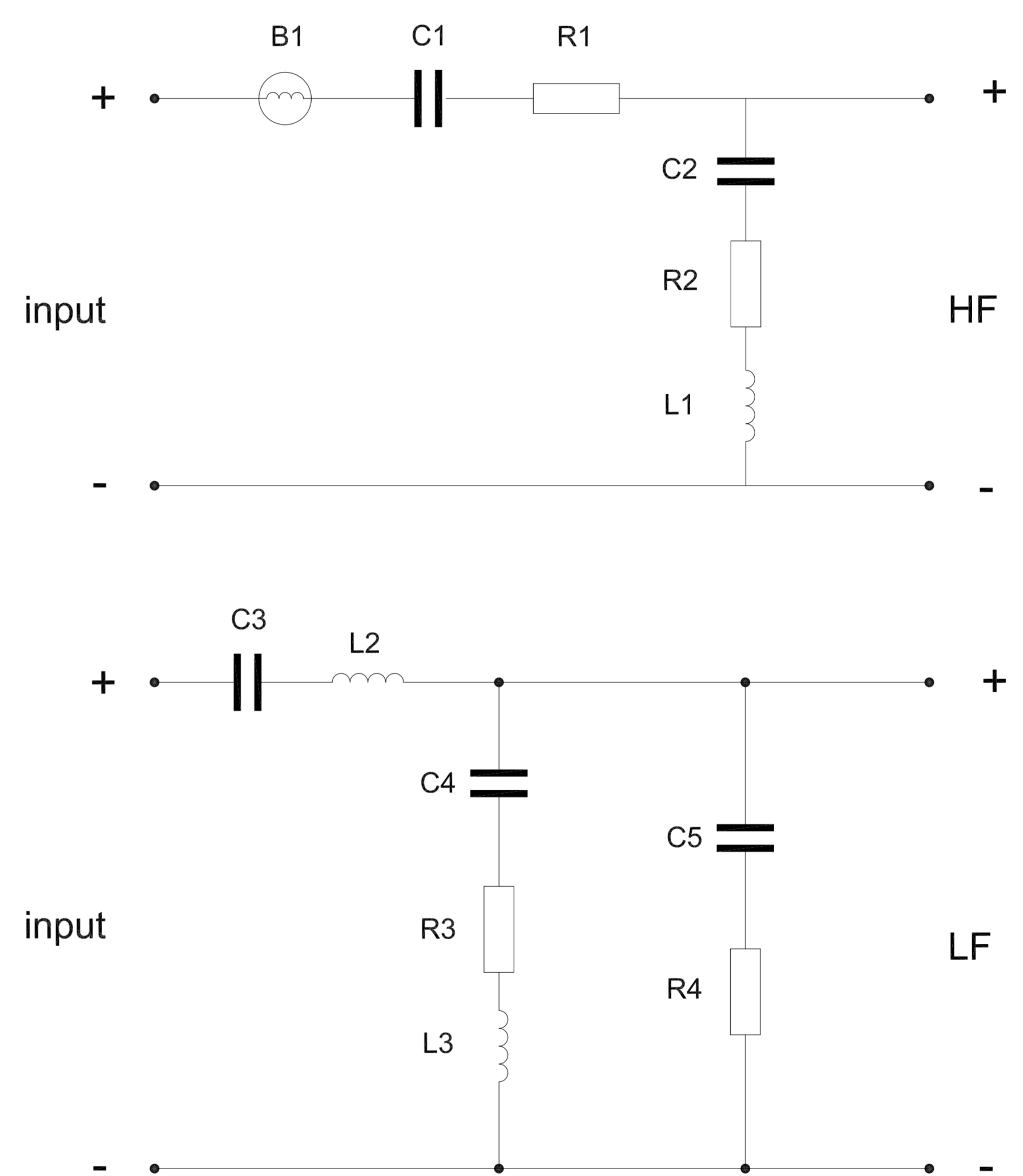
D 27/08/04 SW
COMPONENT
VALUES WAS
C1-2u2/C3-100u

E 05/09/04 SW
BULB SPEC
ADDED.

1 01/03/04 SW

2 08/12/04 SW
COMPONENT
VALUES
MODIFIED....
R1 2R2 WAS
3R9,
R2 10R WAS
4R7,
C1 1u5 WAS
1u8.
CR 8502

3 03/05/05 BM
COMPONENT
VALUES
MODIFIED....
R1 3R3 WAS
2R2,
R2 4R7 WAS
10R,
C1 1u8 WAS
1u5.
CR 8537



TANNOY

The contents, information and copyright of this document are the sole property of Tannoy Ltd and must not be published, applied or copied without the express knowledge & permission of the owners.

MATERIAL

SEE ABOVE

FINISH

CLEAN

ALL DIMENSIONS IN MILLIMETRES

Limits of tolerance unless stated:

One place of decimal dim. ±0.4mm

Two places of decimal dim. ±0.1mm

Holes 12.0mm dia & under +0.1 -0.0mm

Holes over 12.0mm dia. ±0.4mm

RoHS Compliant

Drawn

Checked

Approved

Scale

TITLE CROSSOVER - TYPE 1480 ARENA SATELLITE

CROSSOVER - TYPE 1480 ARENA SATELLITE

A2

7300 0962