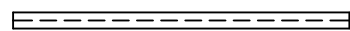
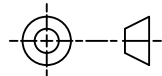
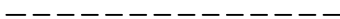


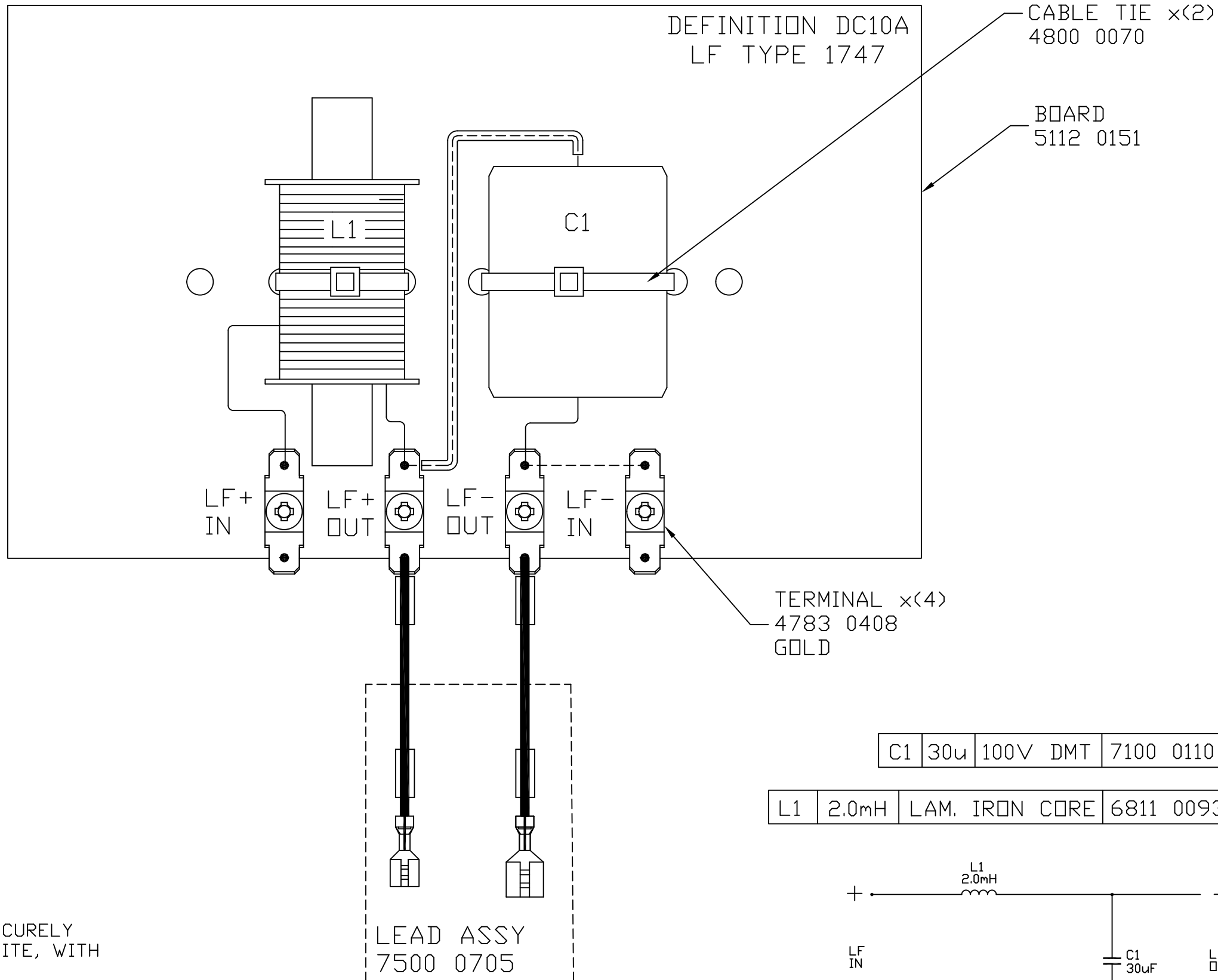
THIRD ANGLE PROJECTION



INDICATES POSITIONS OF SLEEVING 4870 0151 REQUIRED TO INSULATE SILVER LINK WIRE



INDICATES POSITIONS OF SILVER LINK WIRE 1134 6062



NOTES:

1. ENSURE COMPONENTS ARE SECURELY FIXED IN PLACE USING BLACKTITE, WITH DESCRIPTIONS VISIBLE.
2. PRINT TYPE NUMBER ON BOARD
3. ENSURE ALL FIXING HOLES ARE CLEAR OF COMPONENTS

PART No.

7300 1382

First used on

DEFINITION DC10A

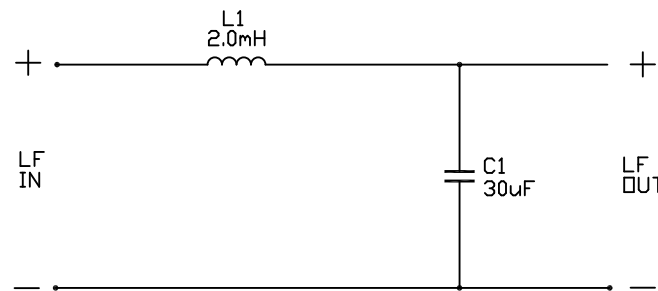
Issues

A 23/02/12 MP

1 23/02/12 MP

| | | | |
|----|-----|----------|-----------|
| C1 | 30u | 100V DMT | 7100 0110 |
|----|-----|----------|-----------|

| | | | |
|----|-------|----------------|-----------|
| L1 | 2.0mH | LAM. IRON CORE | 6811 0093 |
|----|-------|----------------|-----------|



TANNOY.

The contents, information and copyright of this document are the sole property of Tannoy Ltd and must not be published applied or copied without the express knowledge & permission of the owners.

MATERIAL

FINISH

ALL DIMENSIONS IN MILLIMETRES

Limits of tolerance unless stated:

One place of decimal dim.

Two places of decimal dim.

Holes 12.0mm dia. & under

Holes over 12.0mm dia.

RoHS Compliant

Drawn

Checked

Approved

Scale 1:1

TITLE CROSSOVER - TYPE 1747 DEFINITION DC10A LF

CROSSOVER - TYPE 1747 **A3**

7300 1382