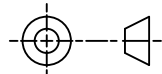


THIRD ANGLE PROJECTION



\*\*\* NOTE PRINT PRODUCT PART AND TYPE NUMBER \*\*\*

PART No.

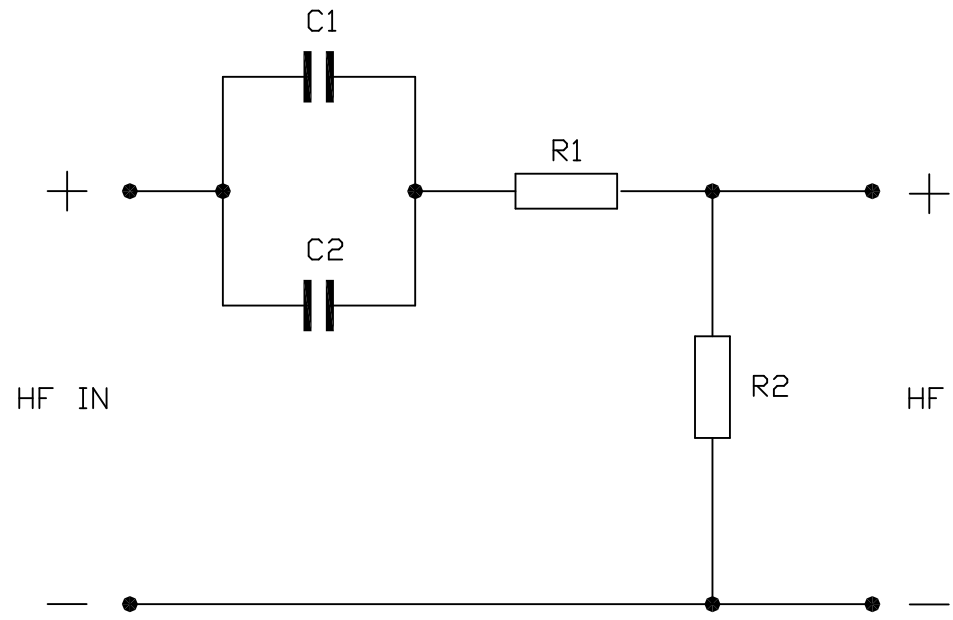
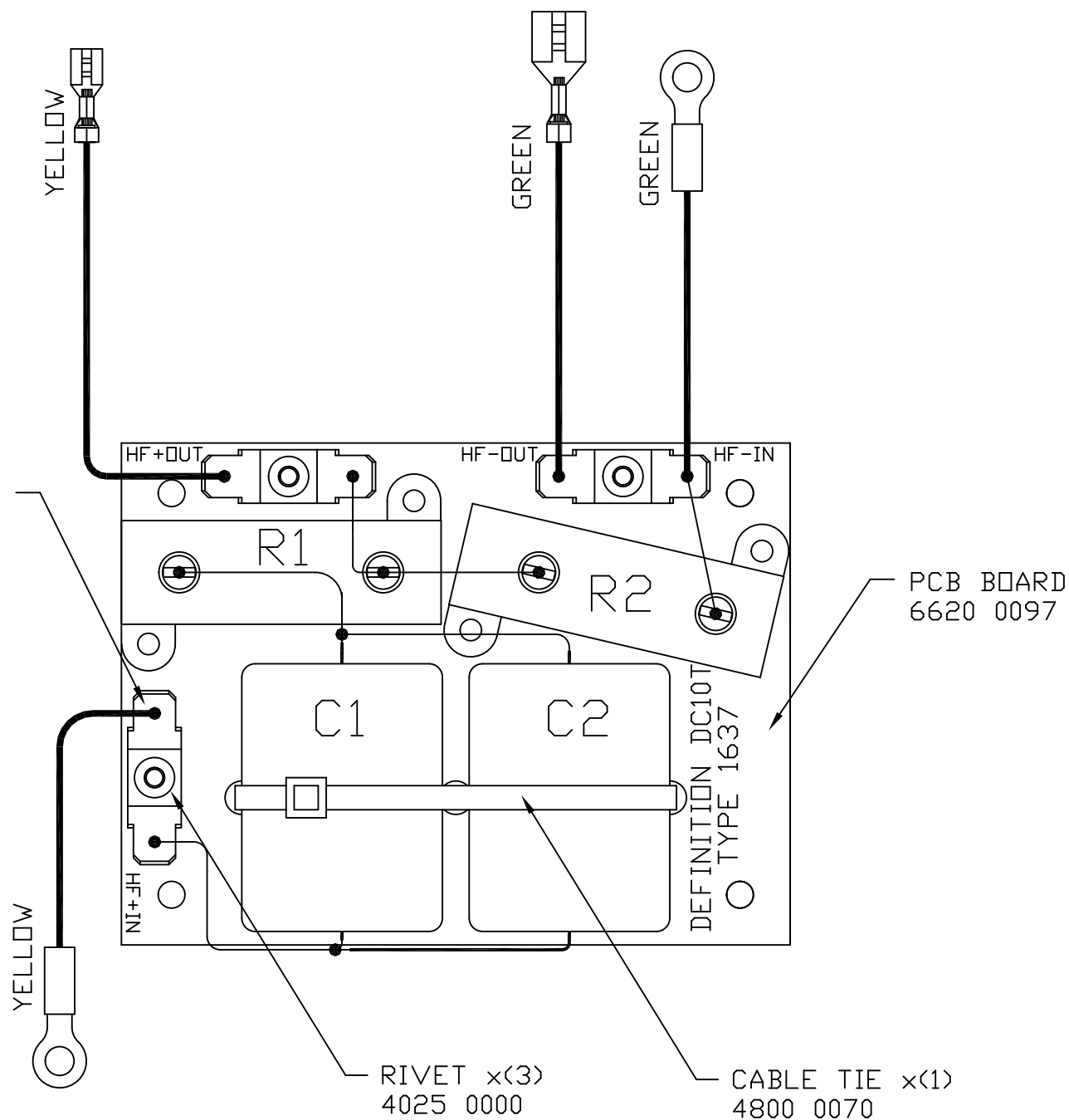
7300 1173

First used on

DEFINITION DC10T

Issues

- 1 22/8/06 MS
- 2 16/01/09 BM  
CABLE TIE  
WAS  
4800 0058  
CR.8734
- 3 19/11/09 MS  
RESISTOR  
ADDED  
CR.8767



NOTE:  
ALL TERMINATED WIRES FORM  
LEAD ASSEMBLY 7500 0640

R1	2R2	50W	2252 0202
R2	15R	50W	2252 0206

C1	1u8	630V	DMT	7100 0141
C2	1u8	630V	DMT	7100 0141

- NOTES:
1. ENSURE COMPONENTS ARE SECURELY FIXED IN PLACE USING LOCTITE 5910, WITH DESCRIPTIONS VISIBLE.
  2. ALL ELECTRICAL CONNECTIONS TO BE SILVER SOLDERED.
  3. ENSURE FIXING HOLES ARE CLEAR OF COMPONENTS AND ADHESIVE.
  4. LINK WIRE TYPE 20 SWG
  5. SEE LF CROSSOVER DRAWING 7300 1174 FOR LF COMPONENTS AND SCHMATIC.

**TANNOY.**

The contents, information and copyright of this document are the sole property of Tannoy Ltd and must not be published applied or copied without the express knowledge & permission of the owners.

MATERIAL

FINISH

ALL DIMENSIONS IN MILLIMETRES

Limits of tolerance unless stated:

One place of decimal dim.

Two places of decimal dim.

Holes 12.0mm dia. & under

Holes over 12.0mm dia.

**RoHS Compliant**

Drawn

Checked

Approved

Scale 1:1

TITLE CROSSOVER - TYPE 1637 HF DEFINITION DC10 T

**A3**

7300 1173