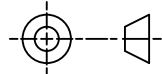


THIRD ANGLE PROJECTION



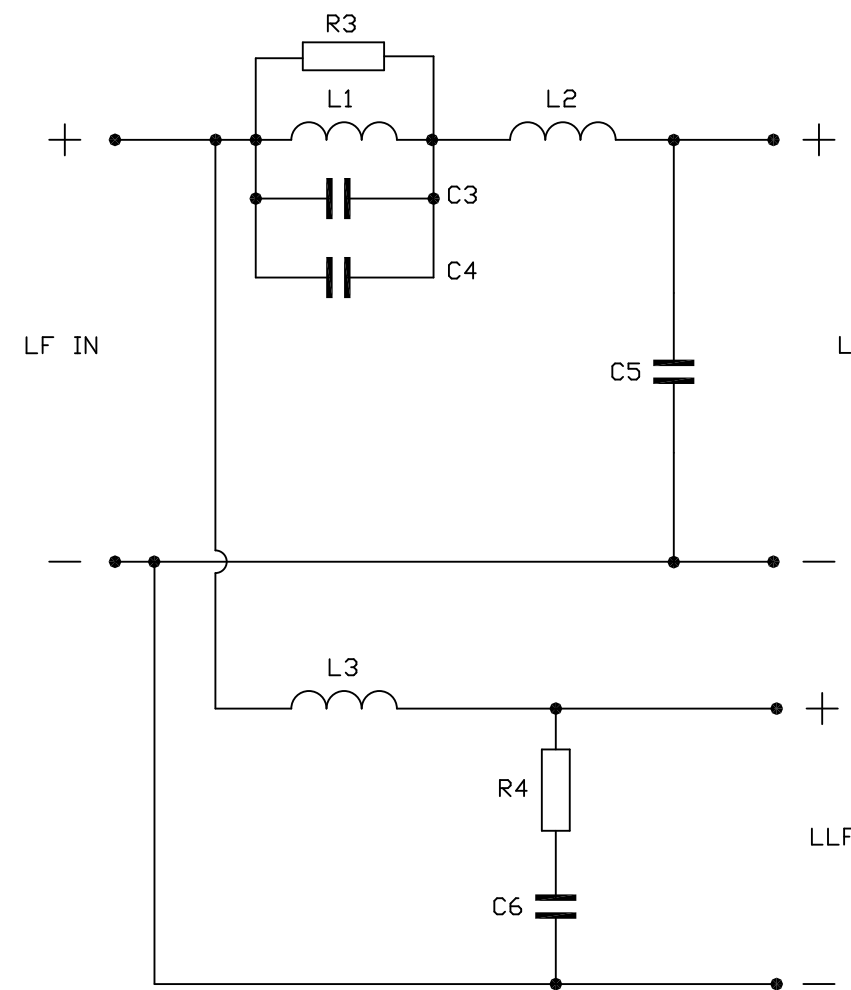
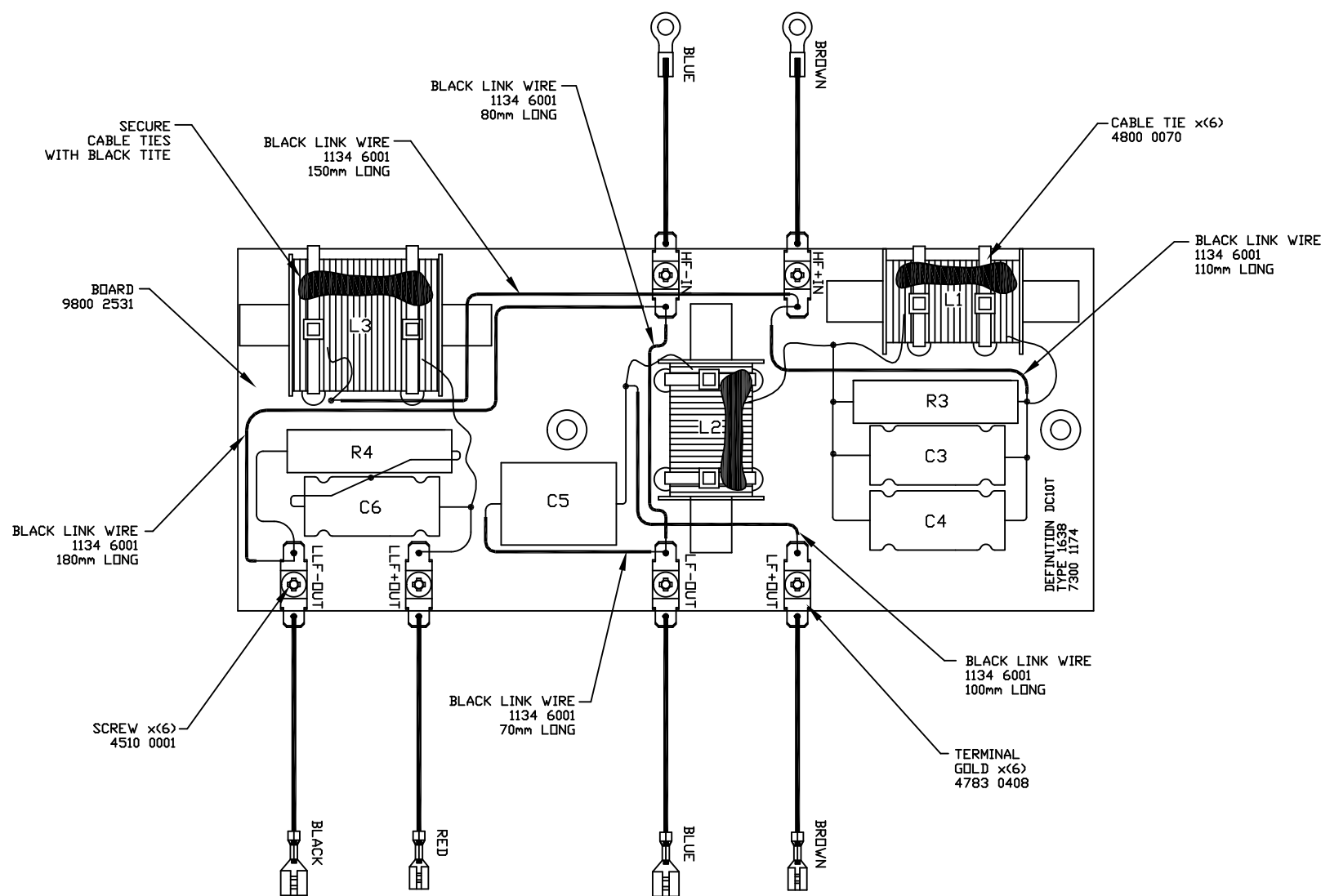
\*\*\* NOTE PRINT PRODUCT PART AND TYPE NUMBER \*\*\*

R3	2R7	17W	2252 3010
R4	2R2	17W	2252 3008

C3	100uF	100V N/P	2753 3387
C4	100uF	100V N/P	2753 3387
C5	6u8F	160V P/P	2606 0657
C6	100uF	100V N/P	2753 3387

L1	2.4mH	LAM CORE	6811 0099
L2	1.7mH	LAM CORE	6811 0089
L3	9.0mH	LAM CORE	6811 0077

PART No.		7300 1174
First used on		DEFINITION DC10T
Issues		
1	22/08/06	MS
2	16/01/09	BM CABLE TIE WAS 4800 0058 QTY.x(3) CR.8734
3	19/11/09	MS CAPACITOR REMOVED CR.8767



- NOTES:
1. ENSURE COMPONENTS ARE SECURELY FIXED IN PLACE USING LOCTITE 5910, WITH DESCRIPTIONS VISIBLE.
  2. ALL ELECTRICAL CONNECTIONS TO BE SILVER SOLDERED.
  3. ENSURE FIXING HOLES ARE CLEAR OF COMPONENTS AND ADHESIVE.
  4. SEE HF CROSSOVER DRAWING 7300 1173 FOR HF COMPONENTS AND SCHMATIC.

NOTE: ALL TERMINATED WIRES FORM LEAD ASSEMBLY 7500 0637

**TANNOY.**

The contents, information and copyright of this document are the sole property of Tannoy Ltd and must not be published applied or copied without the express knowledge & permission of the owners.

MATERIAL

FINISH

ALL DIMENSIONS IN MILLIMETRES

Limits of tolerance unless stated:

One place of decimal dim.

Two places of decimal dim.

Holes 12.0mm dia. & under

Holes over 12.0mm dia.

**RoHS Compliant**

Drawn

Checked

Approved

Scale 1:2

TITLE CROSSOVER - TYPE 1638 LF DEFINITION DC10 T

**A3**

7300 1174