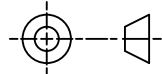
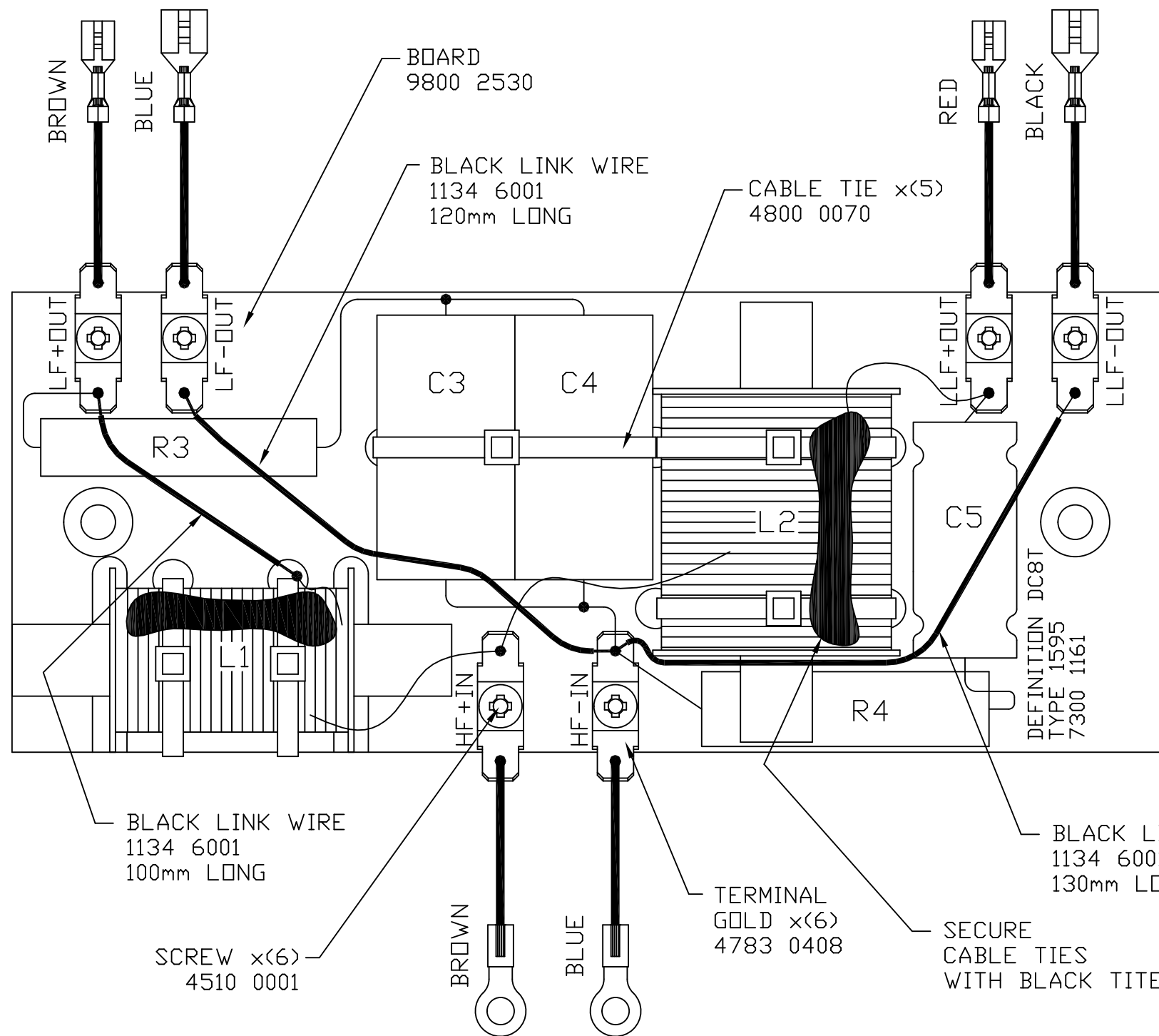


THIRD ANGLE PROJECTION



*** NOTE PRINT PRODUCT PART AND TYPE NUMBER ***

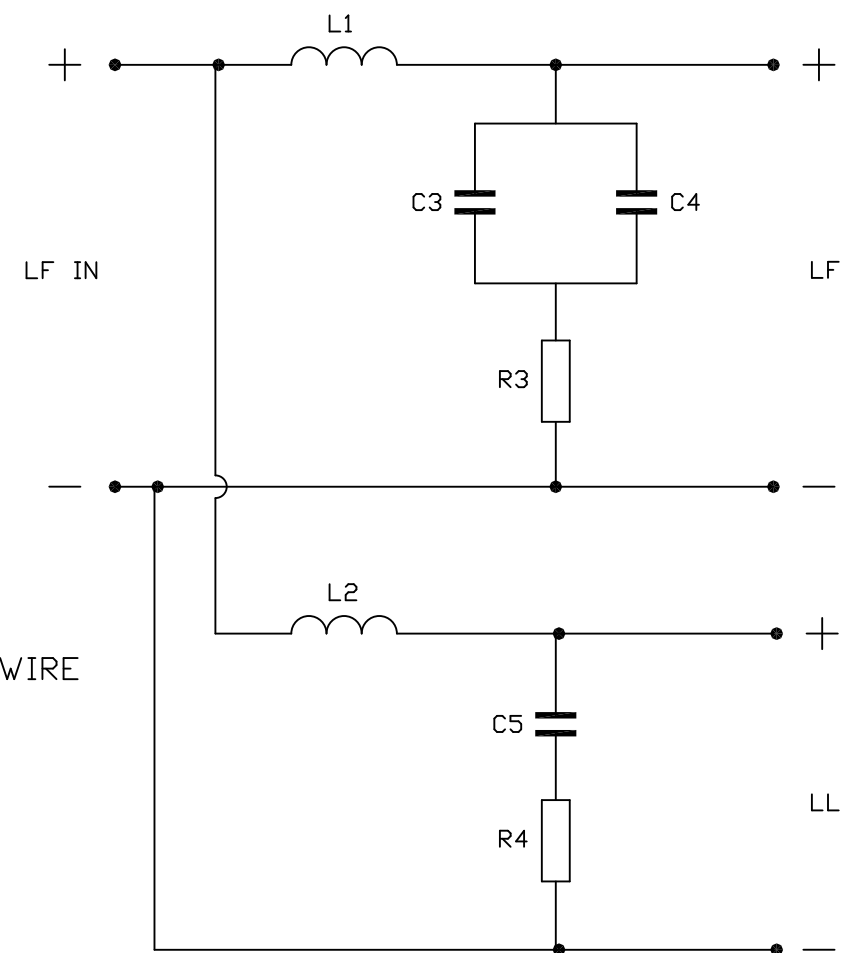


R3	3R3	9W	2252 3174
R4	2R2	17W	2252 3008

C3	12uF	160V P/P	2606 1172
C4	12uF	160V P/P	2606 1172
C5	100uF	100V N/P	2753 3387

L1	1.0mH	LAM CORE	6811 0076
L2	9.0mH	LAM CORE	6811 0077

NOTE:
ALL TERMINATED WIRES FORM
LEAD ASSEMBLY 7500 0636



- NOTES:
1. ENSURE COMPONENTS ARE SECURELY FIXED IN PLACE USING LOCTITE 5910, WITH DESCRIPTIONS VISIBLE.
 2. ALL ELECTRICAL CONNECTIONS TO BE SILVER SOLDERED.
 3. ENSURE FIXING HOLES ARE CLEAR OF COMPONENTS AND ADHESIVE.
 4. SEE HF CROSSOVER DRAWING 7300 1160 FOR HF COMPONENTS AND SCHMATIC.

PART No.

7300 1161

First used on

DEFINITION DC8T

Issues

- | | | |
|---|----------|----|
| 1 | 28/08/06 | BM |
| 2 | 16/01/09 | BM |
- CABLE TIE
WAS
4800 0058
QTY.x(3)
CR.8734

TANNOY.

The contents, information and copyright of this document are the sole property of Tannoy Ltd and must not be published applied or copied without the express knowledge & permission of the owners.

MATERIAL

FINISH

ALL DIMENSIONS IN MILLIMETRES

Limits of tolerance unless stated:

One place of decimal dim.

Two places of decimal dim.

Holes 12.0mm dia. & under

Holes over 12.0mm dia.

RoHS Compliant

Drawn

Checked

Approved

Scale 1:1

TITLE CROSSOVER - TYPE 1595 LF DEFINITION DC8 T

A3

7300 1161