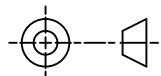
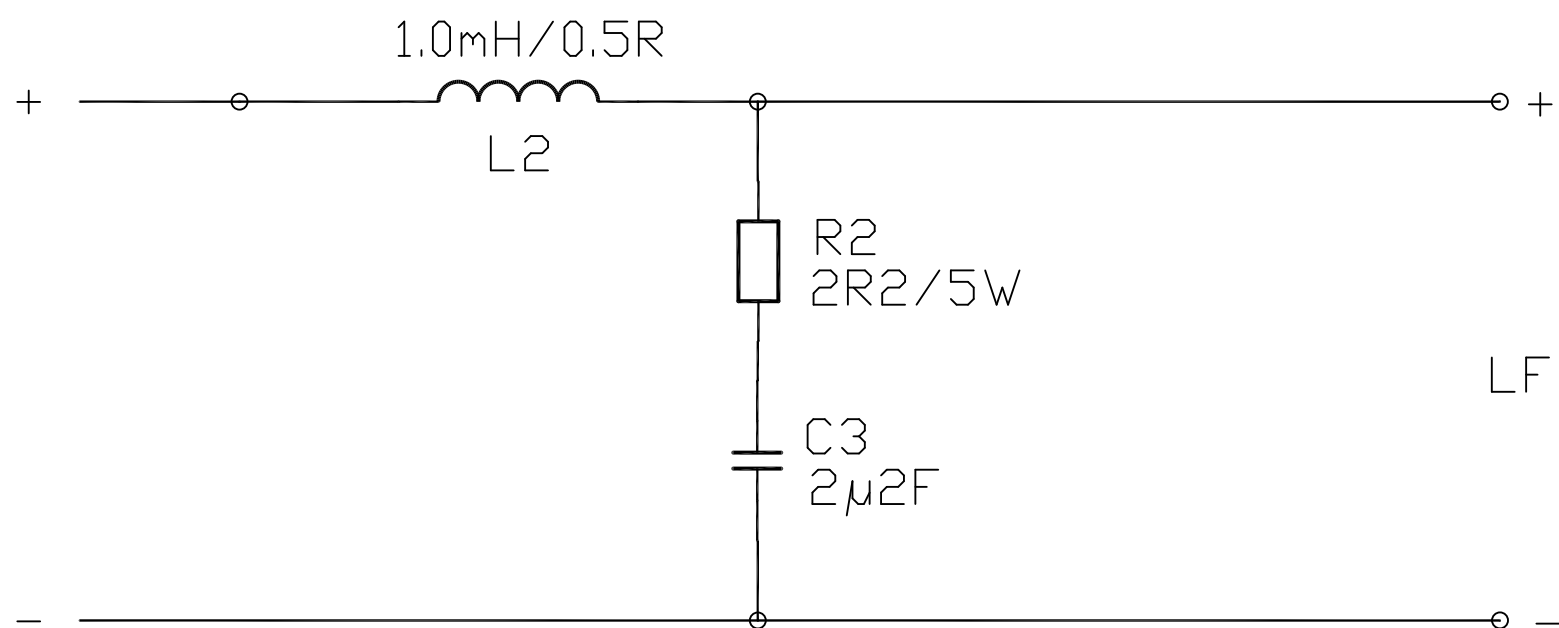
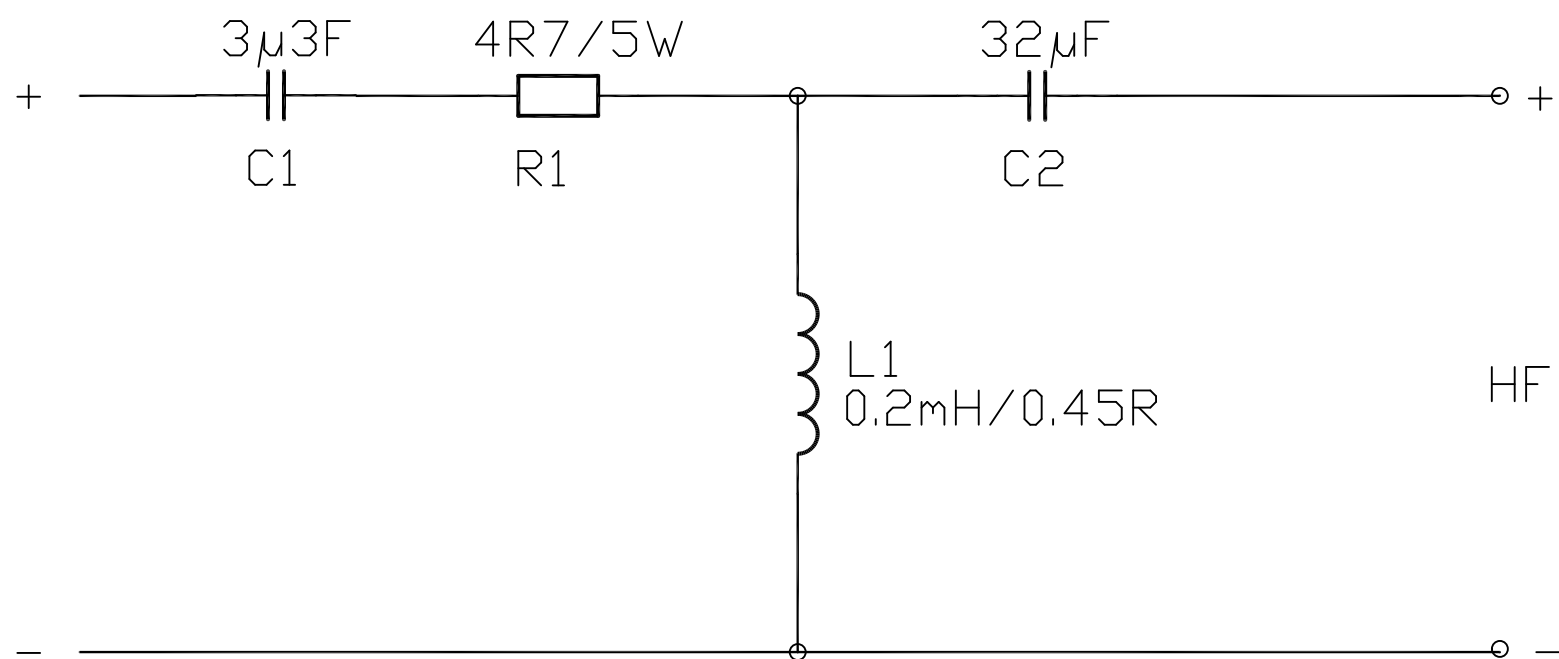


THIRD ANGLE PROJECTION



SCHEMATIC DIAGRAM



ITEM		DESCRIPTION	QTY
CAPACITOR	C1	3µ3/100V/10% MET. POLYESTER	1
	C2	32µF/63V/10% BI-POLAR ELECT.	1
	C3	2µ2/63V/10% BI-POLAR ELECT	1
COIL	L1	0.2mH AIRCORE, DCR<0.45R	1
	L2	1.0mH LAM. IRON CORE,DCR<0.5R	1
RESISTOR	R1	4R7/5W/5% WIREWOUND	1
	R2	2R2/5W/5% WIREWOUND	1

ENGINEERING REF: X/OVER DESIGN IDENTICAL TO ORIGINAL HTS 100 CENTRE WITH THE EXCEPTION OF R1 AND L1 VALUES.

Part No.

7300 1292

First used on

HTS 101 CENTRE

Issues

A 01/03/10 MS

B 13/05/10 MS

L1 CHANGED TO 0.2mH, <0.45R FROM 0.2mH, <0.25R

TANNOY

The contents, information and copyright of this document are the sole property of Tannoy Ltd and must not be published applied or copied without the express knowledge & permission of the owners.

MATERIAL

FINISH

ALL DIMENSIONS IN MILLIMETRES

Limits of tolerance unless stated:

One place of decimal dim.

Two places of decimal dim.

Holes 12.0mm dia & under

Holes over 12.0mm dia.

RoHS Compliant

Drawn

Checked

Approved

Scale

TITLE CROSSOVER ASSY - TYPE 1685 - HTS 101 CENTRE

CROSSOVER ASSY - TYPE 1685 - HTS 101 CENTRE

A2

7300 1292