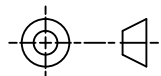
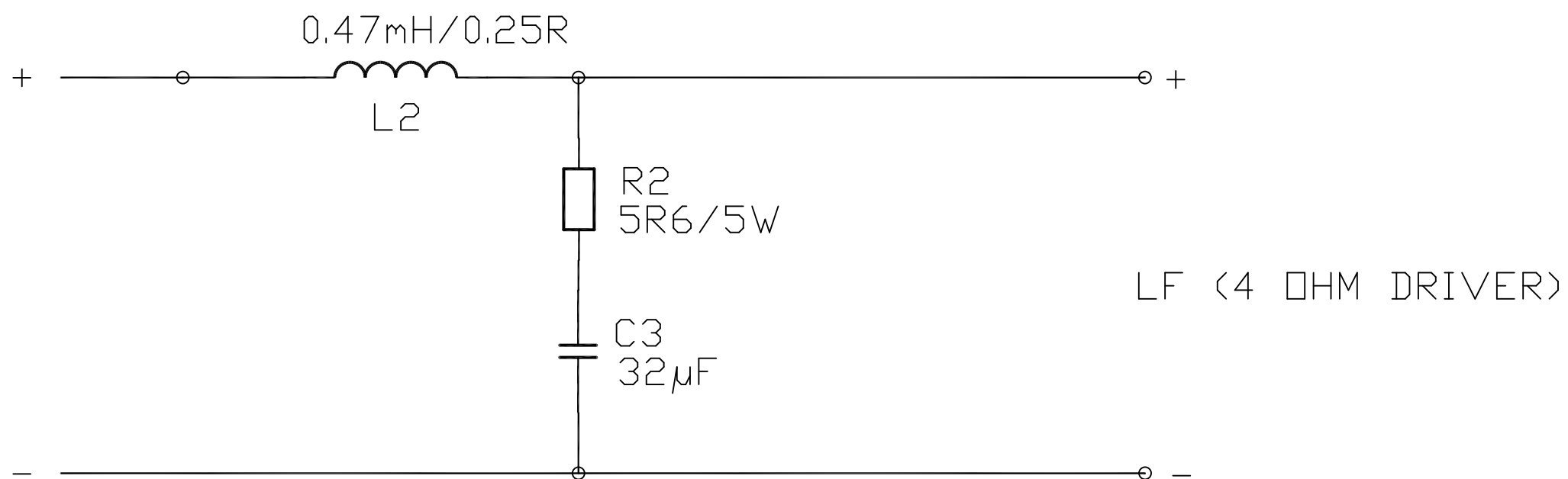
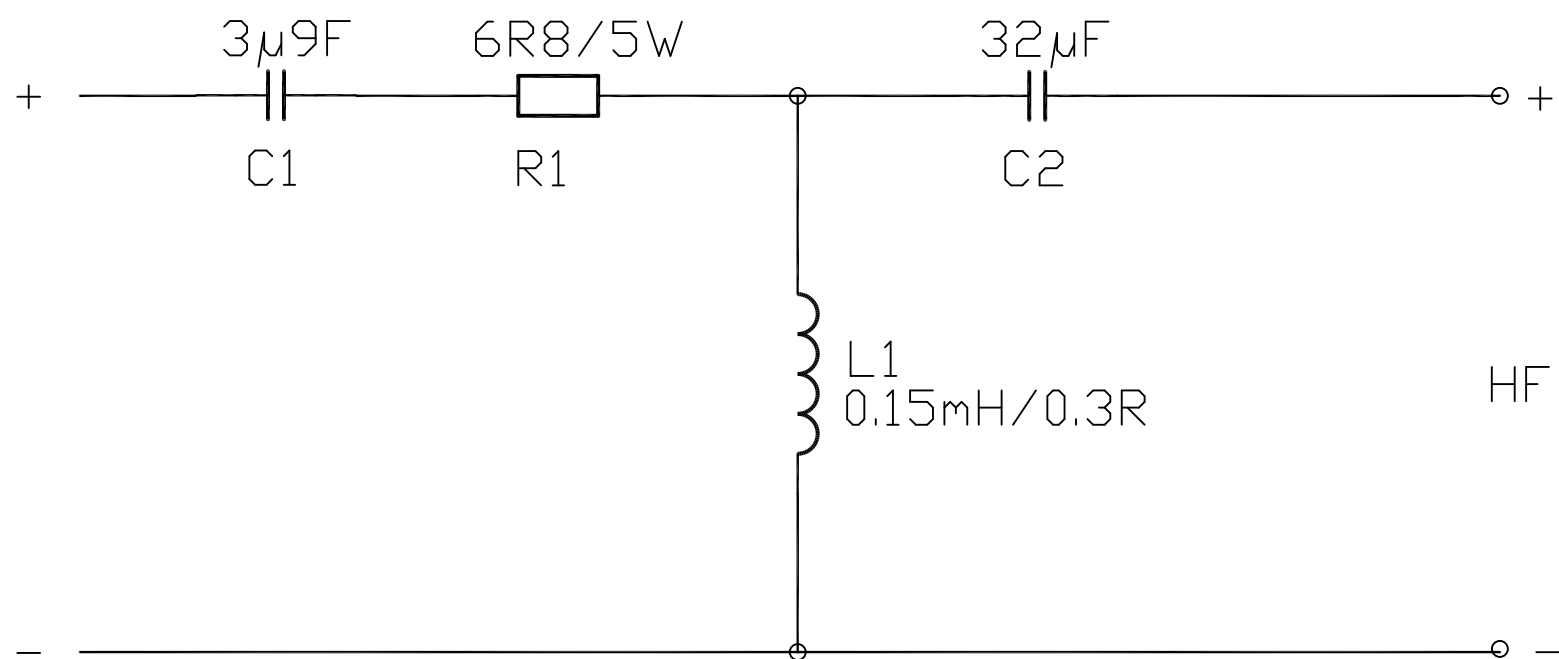


THIRD ANGLE PROJECTION



# SCHEMATIC DIAGRAM



ITEM		DESCRIPTION	QTY
CAPACITOR	C1	3µ9/100V/10% MET. POLYESTER	1
	C2	32µF/63V/10% BI-POLAR ELECT.	1
	C3	32µF/63V/10% BI-POLAR ELECT.	1
COIL	L1	0.15mH AIRCORE, DCR<0.3R	1
	L2	0.47mH LAM. IRON CORE,DCR<0.25R	1
RESISTOR	R1	6R8/5W/5% WIREWOUND	1
	R2	5R6/5W/5% WIREWOUND	1

ENGINEERING REF: X/OVER DESIGN IDENTICAL TO ORIGINAL HTS 100 SATELLITE.

Part No. 7300 1291  
 First used on HTS 101 SAT  
 Issues A 01/03/10 MS

FOR ESTIMATING PURPOSES ONLY  
 NO TOOLING OR PRODUCTION  
 PARTS TO BE MADE TO THIS  
 DRAWING

## TANNOY

The contents, information and copyright of this document are the sole property of Tannoy Ltd and must not be published applied or copied without the express knowledge & permission of the owners.

MATERIAL

FINISH

ALL DIMENSIONS IN MILLIMETRES

Limits of tolerance unless stated:

One place of decimal dim.

Two places of decimal dim.

Holes 12.0mm dia & under

Holes over 12.0mm dia.

RoHS Compliant

Drawn

Checked

Approved

Scale

TITLE CROSSOVER ASSY - TYPE 1684 - HTS 101 SATELLITE

CROSSOVER ASSY - TYPE 1684 - HTS 101 SATELLITE

**A2**

7300 1291