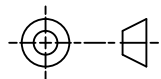
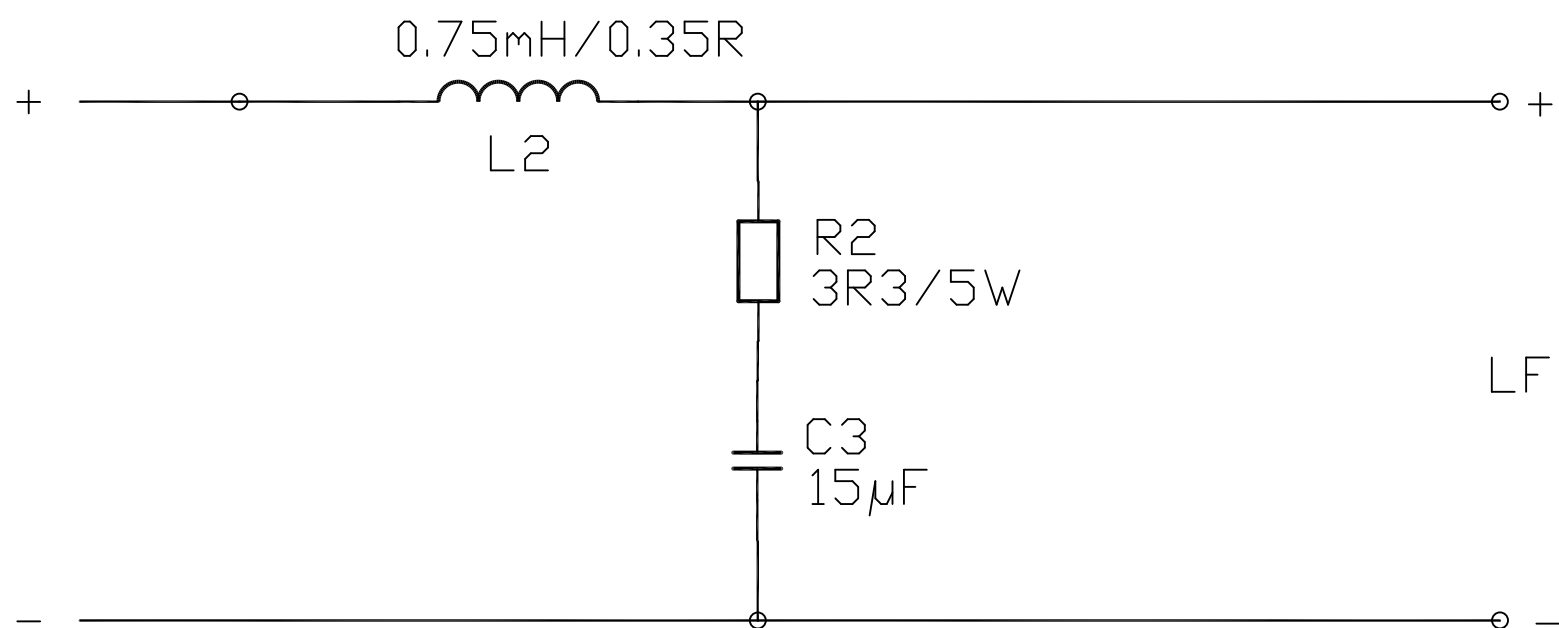
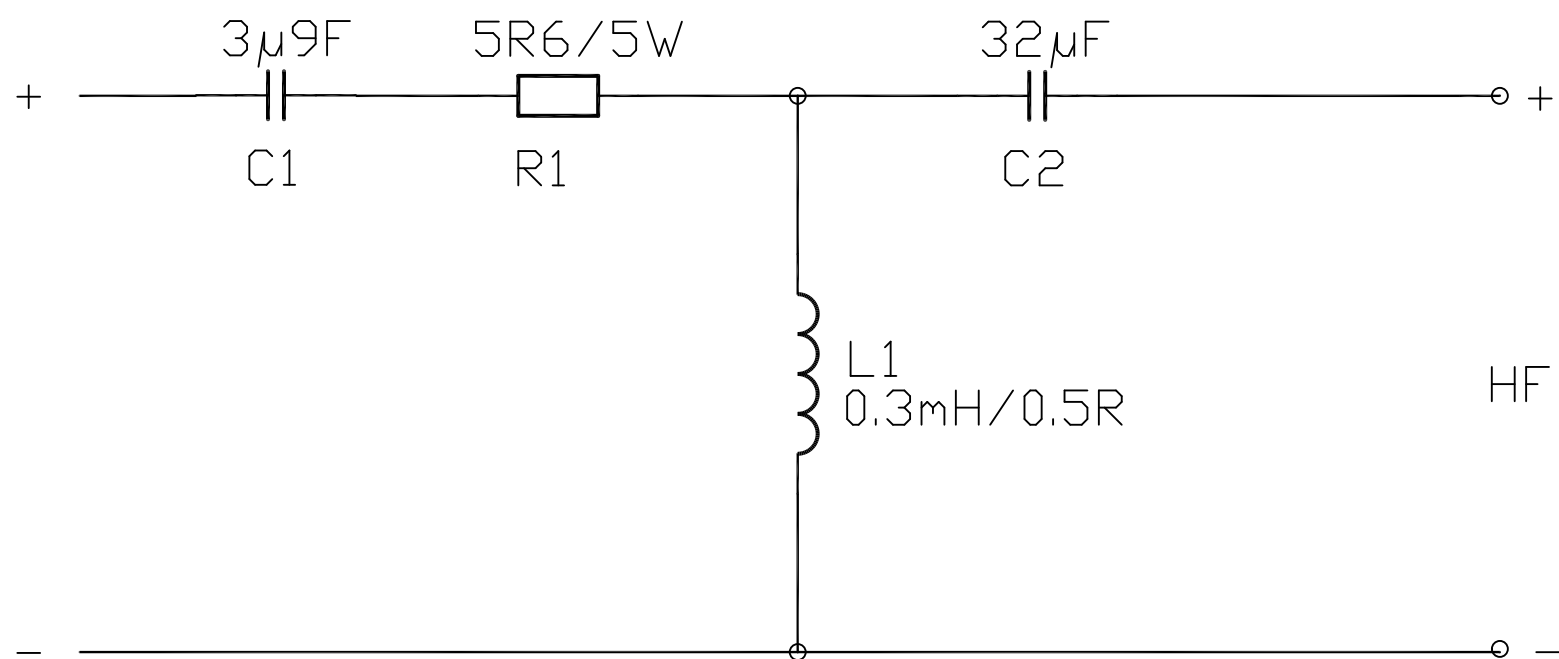


THIRD ANGLE PROJECTION



# SCHEMATIC DIAGRAM



ITEM	DESCRIPTION	QTY
CAPACITOR	C1 3µ9/100V/10% MET. POLYESTER	1
	C2 32µF/63V/10% BI-POLAR ELECT.	1
	C3 15µ/63V/10% BI-POLAR ELECT	1
COIL	L1 0.3mH AIRCORE, DCR<0.5R	1
	L2 0.75mH LAM. IRON CORE,DCR<0.35R	1
RESISTOR	R1 5R6/5W/5% WIREWOUND	1
	R2 3R3/5W/5% WIREWOUND	1

ENGINEERING REF: X/OVER DESIGN IDENTICAL TO ORIGINAL HTS 200 TOWER

Part No.

7300 1293

First used on

HTS 201 TOWER

Issues

A 01/03/10 MS

FOR ESTIMATING PURPOSES ONLY  
 NO TOOLING OR PRODUCTION  
 PARTS TO BE MADE TO THIS  
 DRAWING

## TANNOY

The contents, information and copyright of this document are the sole property of Tannoy Ltd and must not be published applied or copied without the express knowledge & permission of the owners.

MATERIAL

FINISH

ALL DIMENSIONS IN MILLIMETRES

Limits of tolerance unless stated:

One place of decimal dim.

Two places of decimal dim.

Holes 12.0mm dia & under

Holes over 12.0mm dia.

*RoHS Compliant*

Drawn

Checked

Approved

Scale

TITLE CROSSOVER ASSY - TYPE 1686 - HTS 201 TOWER

CROSSOVER ASSY - TYPE 1686 - HTS 201 TOWER

**A2**

7300 1293