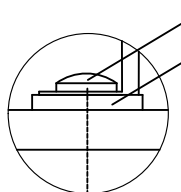
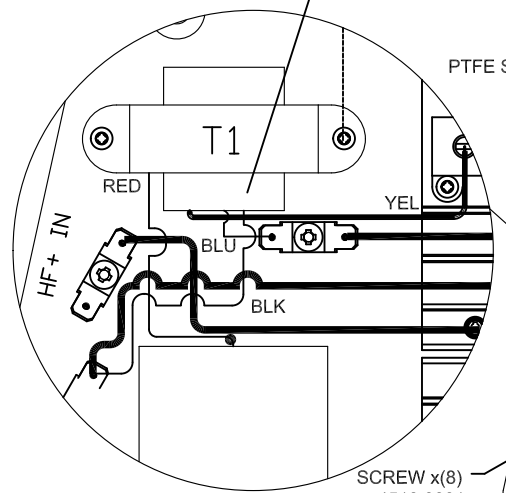


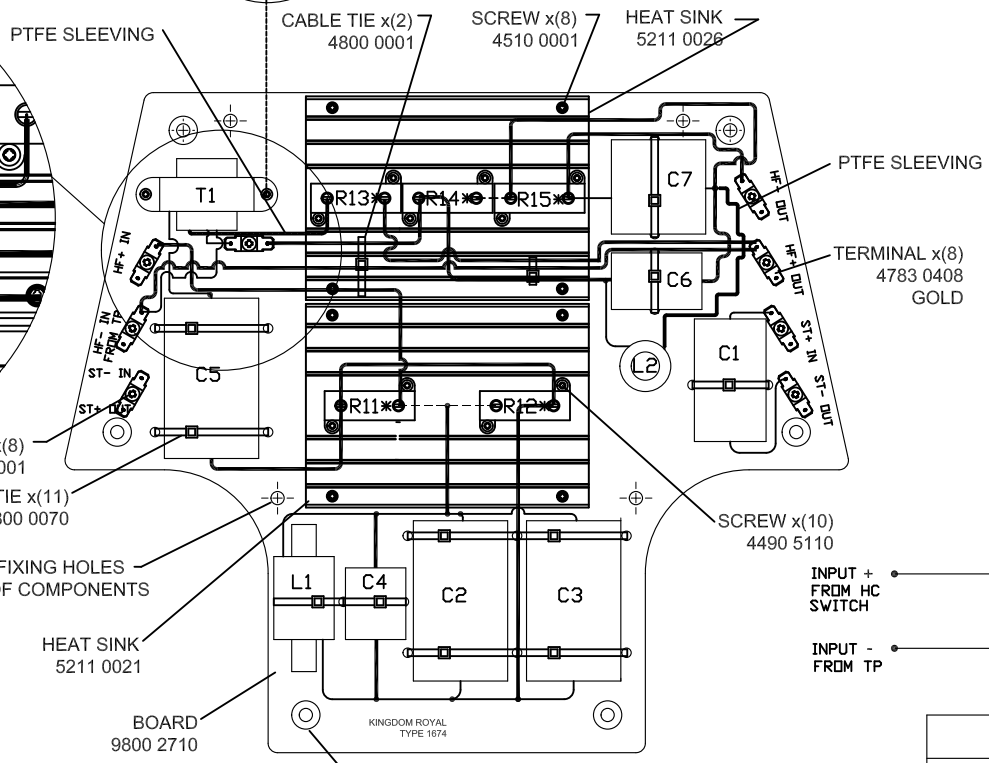
THIRD ANGLE PROJECTION

UNUSED TRANSFORMER WIRES TO BE INSULATED BY HEATSHRINK AND TIED BACK



----- INDICATES POSITIONS OF SILVER LINK WIRE 1134 6062

ALL OTHER LINK WIRE - 1134 6145 ASSY USES 1.9M

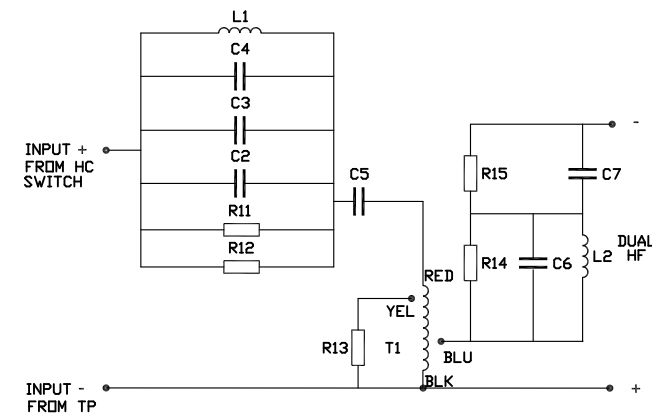
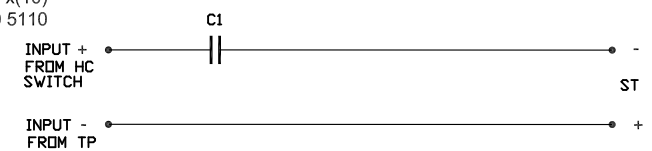


R11	15R	50W	2252	0206
R12	15R	50W	2252	0206
R13	22R	50W	2252	0207
R14	15R	50W	2252	0206
R15	6R8	50W	2252	0212

C1	3u3	630V	2606	1397
C2	6u8	630V	2606	1403
C3	6u8	630V	2606	1403
C4	3u3	630V	2606	0818
C5	8u2	630V	2606	1413
C6	30u	160V	7100	0110
C7	4u7	630V	2606	1399

L1	2.1mH		6811	0086
L2	0.12mH		7100	0136

T1			7100	0061
----	--	--	------	------



- NOTE:
1. ENSURE COMPONENTS ARE SECURELY FIXED IN PLACE USING BLACKTITE WITH DESCRIPTIONS VISIBLE.
  2. PRINT TYPE NUMBER ON BOARD.
  3. COMPONENTS WITH \* MUST BE FIXED WITH SILICON GREASE.
  4. SEE DRAWING 7300 1278 FOR LF CROSSOVER SCHEMATIC.

FOR ESTIMATING PURPOSES ONLY  
NO TOOLING OR PRODUCTION  
PARTS TO BE MADE TO THIS  
DRAWING

**TANNOY.**  
The contents, information and copyright of this document are the sole property of Tannoy Ltd and must not be published, applied or copied without the express knowledge & permission of the owners.

MATERIAL  
FINISH  
TITLE CROSSOVER- TYPE 1674 HF KINGDOM ROYAL

ALL DIMENSIONS IN MILLIMETRES	
Limits of tolerance unless stated:	
One place of decimal dim.	±0.4mm
Two places of decimal dim.	±0.1mm
Holes 12.0mm dia & under	+0.1 -0.0mm
Holes over 12.0mm dia.	±0.4mm
RoHS Compliant	Drawn M.Saunders
Checked	Approved
Scale	1:0.5