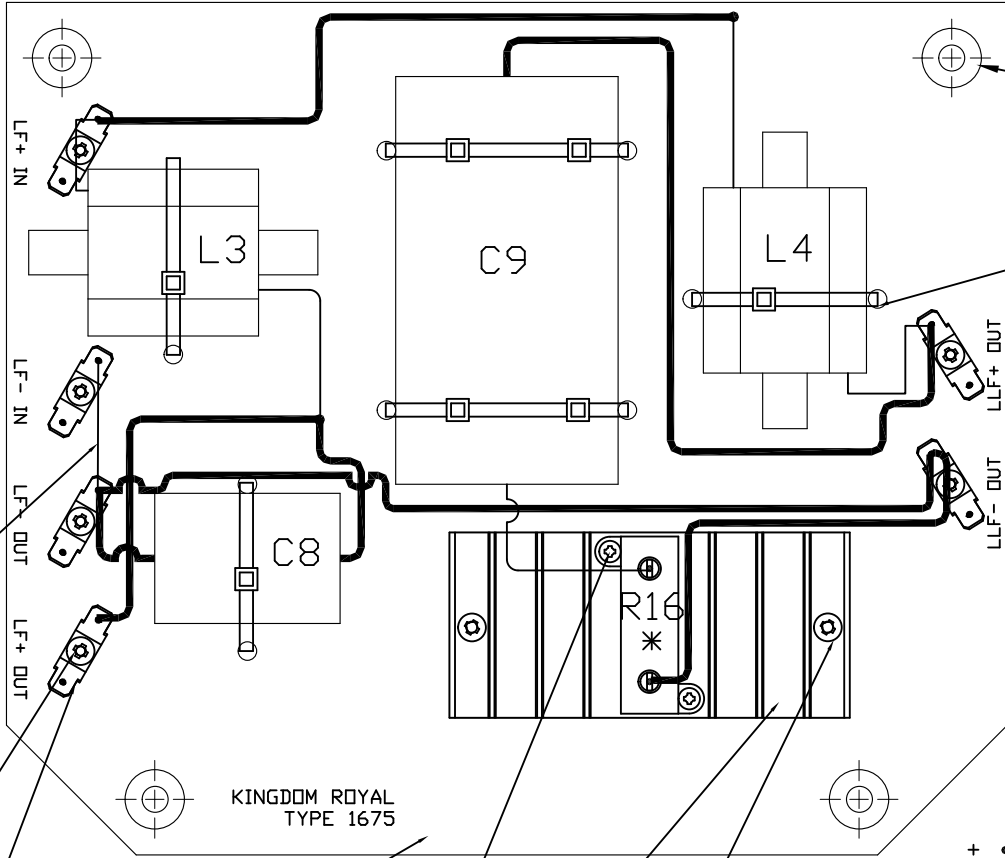


THIRD ANGLE PROJECTION



ENSURE ALL FIXING HOLES ARE CLEAR OF COMPONENTS

CABLE TIE x(7)
4800 0070

ALL LINK WIRE - 1134 6145
UNLESS OTHERWISE STATED
ASSY USES 0.9M

R16	2R2	50W	2252 0202
C8	30u	160V	2606 0634
C9	200u	400V	7100 0110
L3	3.5mH		6811 0140
L4	9.0mH		6811 0077

SILVER LINK WIRE -0.05M
1134 6062

SCREW x(6)
4510 0001

TERMINAL x(6)
4783 0408
GOLD

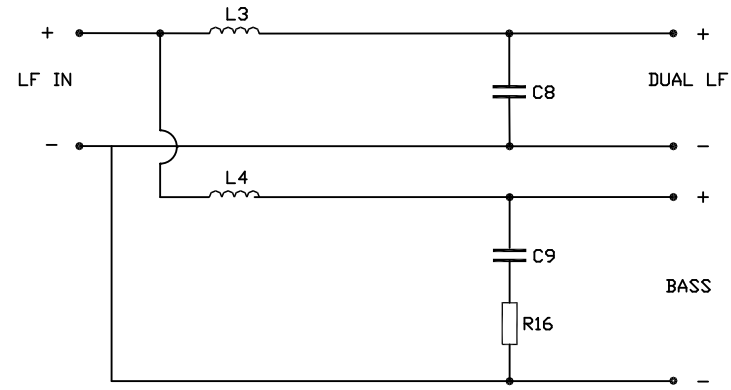
KINGDOM ROYAL
TYPE 1675

BOARD
9800 2709

HEAT SINK
5211 0027

SCREW x(2)
4490 5110

SCREW x(2)
4510 0001



- NOTES:
1. ENSURE COMPONENTS ARE SECURELY FIXED IN PLACE USING BLACKTITE, WITH DESCRIPTIONS VISIBLE.
 2. PRINT TYPE NUMBER ON BOARD.
 3. SEE DRAWING 7300 1277 FOR HF CROSSOVER SCHEMATIC.
 4. COMPONENTS WITH * MUST BE FIXED WITH SILICON GREASE.

Part No.	7300 1278
First used on	KINGDDM ROYAL
Issues	A 27/08/09 MS
	B 09/07/10 MS 4510 0001 WAS 4510 0006, 4490 5110 WAS 4490 3206
	2 03/08/10 MS SILVER LINK WIRE DETAILED CR 8788

TANNOY.
The contents, information and copyright of this document are the sole property of Tannoy Ltd and must not be published applied or copied without the express knowledge & permission of the owners.

MATERIAL

FINISH

TITLE CROSSOVER - LF TYPE 1675 KINGDOM ROYAL

ALL DIMENSIONS IN MILLIMETRES	RoHS Compliant
Limits of tolerance unless stated:	
One place of decimal dim.	Drawn
Two places of decimal dim.	Checked
Holes 12.0mm dia & under	Approved
Holes over 12.0mm dia.	Scale 1:1
	A2 7300 1278