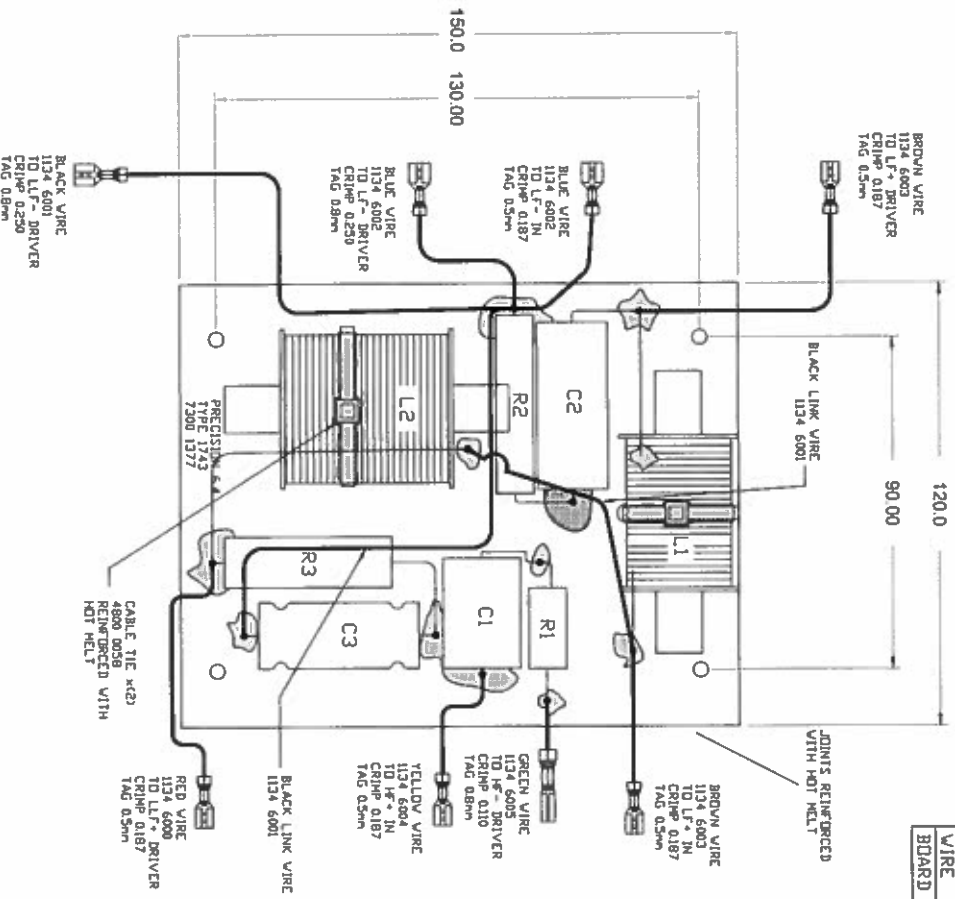


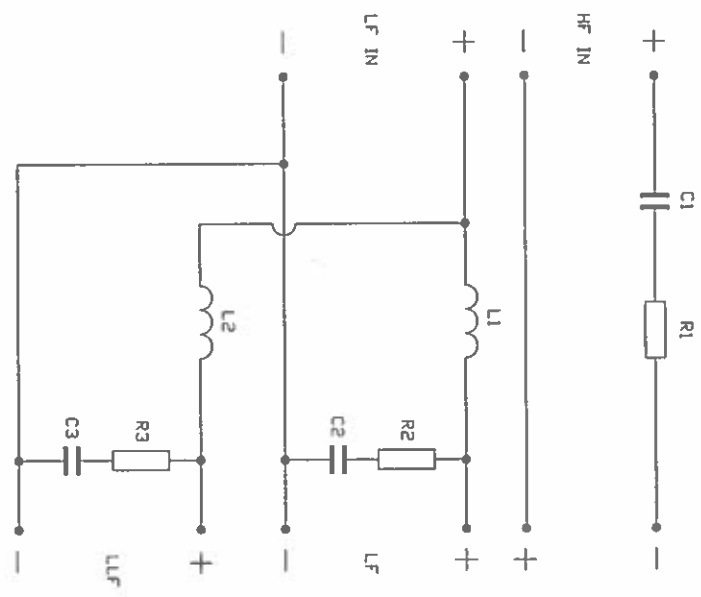


THIRD ANGLE PROJECTION ■■■ NOTE PRINT PRODUCT PART AND TYPE NUMBER ■■■

TYPE	DESCRIPTION	TANNODY PART REF.	NOTES
RESISTOR R1	R27 5W 5% WIREWOUND	2252 9427	
RESISTOR R2	R85 9W 5% WIREWOUND	2252 3166	
RESISTOR R3	R82 17W 5% WIREWOUND	2252 3009	
CAPACITOR C1	3u3 400V 3% POLYPROP		ERSE CCAP40-03-330 - DMT DAMPED
CAPACITOR C2	20u 100V 5% POLYESTER	2252 1333	
CAPACITOR C3	100u 100V 10% NP	2753 3387	
INDUCTOR L1	10mH 5% DCR<0.13 LAM CORE	6811 0076	
INDUCTOR L2	9.0mH 5% DCR<0.6 LAM CORE	6811 0077	
WIRE	5/16 ESTIMATE		VARIOUS (SEE BELOW)
BOARD	FIBREGLASS FR4 1.6mm THICK		LOCAL VAN DEN HIL C318 EQUIVALENT COMPONENTS HAND WIRED (NO TRACKS)



- NOTES:
1. ENSURE JOINTS ARE SECURELY FIXED IN PLACE USING HOTMELT. WITH DESCRIPTIONS VISIBLE.
  2. REINFORCE JOINTS AND CABLE TIES WITH HOT MELT ADHESIVE TO ENSURE COMPONENT SECURITY. SEE -
  3. ENSURE FIXING HOLES ARE CLEAR OF COMPONENTS AND HOTMELT.
  4. ENSURE COMPONENTS L2 IS POSITIONED ON PCB BOARD AS SHOWN.



BOARD SIZE - 120.0mm x 150.0mm  
FIXING HOLES - 4 x Ø4.2mm THRU

FOR ESTIMATING PURPOSES ONLY  
NO TOOLING OR PRODUCTION  
PARTS TO BE MADE TO THIS  
DRAWING

# TANNODY

The contents, information and copyright of this document are the sole property of Tannody Ltd and shall remain confidential. It is not to be reproduced, stored, copied or copied without the express knowledge & permission of the owners.

MATERIAL	FINISH

TYPE	CROSSOVER - TYPE 1743 PRECISION 6.4

TYPE	CROSSOVER - TYPE 1743 PRECISION 6.4	A2

ALL DIMENSIONS IN MILLIMETRES

Links of tolerance unless stated:	±0.4mm
One piece of tolerance:	±0.1mm
Two pieces of tolerance:	±0.1-0.2mm
Holes 12.0mm dia & under:	±0.1mm
Holes over 12.0mm dia:	±0.2mm

Rohs Compliant