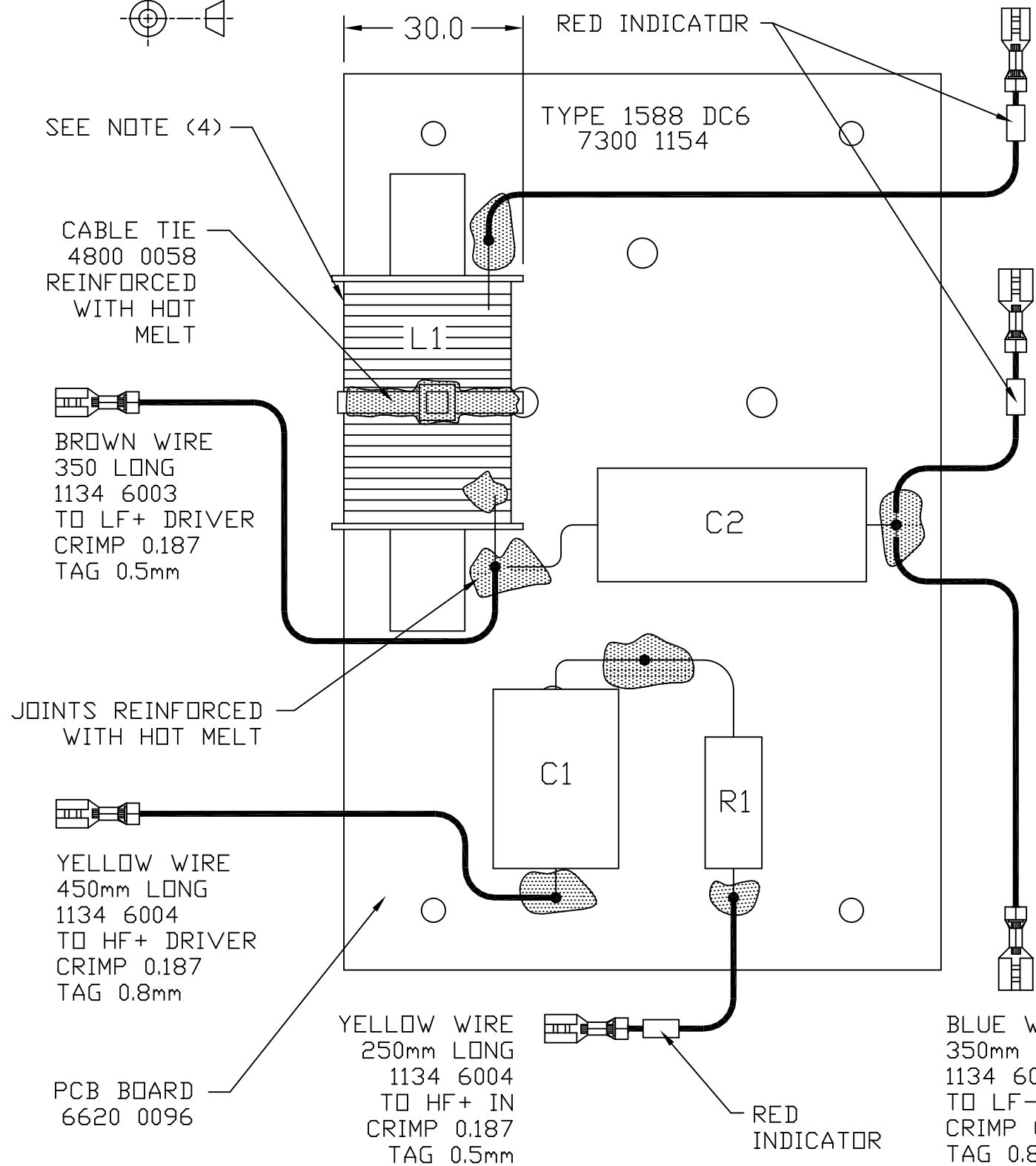
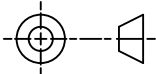


THIRD ANGLE PROJECTION

*** NOTE PRINT PRODUCT PART AND TYPE NUMBER ***



R1	3R9	5W	2252 9431
----	-----	----	-----------

C1	2u7	160V DMT	7100 0114
C2	33u	100V	2606 1323

L1	2.1mH	LAM CORE	6811 0086
----	-------	----------	-----------

PART No.

7300 1154

First used on

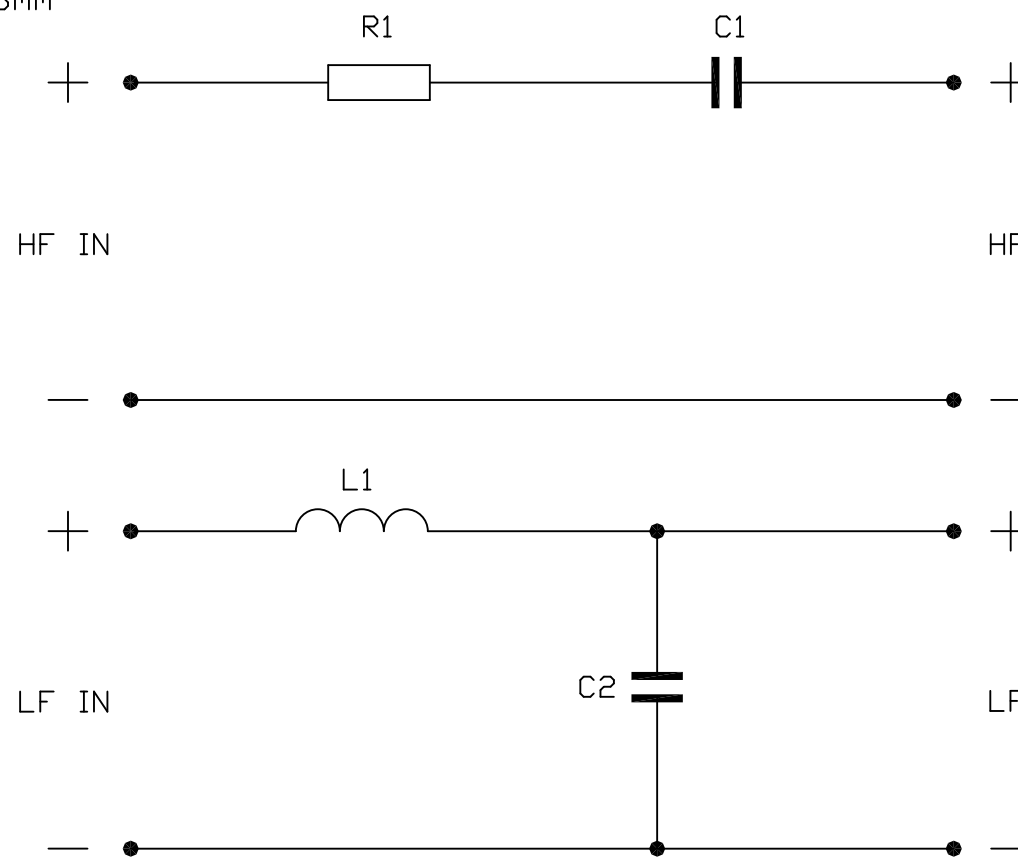
REVOLUTION

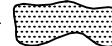
Issues

A 22/08/06 MS

NOTE:

ALL TERMINATED WIRES FORM LEAD ASSEMBLY 7500 0653



- NOTES:
1. ENSURE COMPONENTS ARE SECURELY FIXED IN PLACE USING HOTMELT, WITH DESCRIPTIONS VISIBLE.
 2. REINFORCE JOINTS AND CABLE TIES WITH HOT MELT ADHESIVE TO ENSURE COMPONENT SECURITY. SEE - 
 3. ENSURE FIXING HOLES ARE CLEAR OF COMPONENTS AND HOTMELT GLUE.
 4. ENSURE COMPONENT L1 IS POSITIONED ON PCB BOARD AS SHOWN.

TANNOY.

The contents, information and copyright of this document are the sole property of Tannoy Ltd and must not be published applied or copied without the express knowledge & permission of the owners.

MATERIAL

FINISH

ALL DIMENSIONS IN MILLIMETRES

Limits of tolerance unless stated:

One place of decimal dim.

Two places of decimal dim.

Holes 12.0mm dia. & under

Holes over 12.0mm dia.

RoHS Compliant

Drawn

Checked

Approved

Scale 1:1

TITLE CROSSOVER - TYPE 1588 REVOLUTION DC6

A3

7300 1154