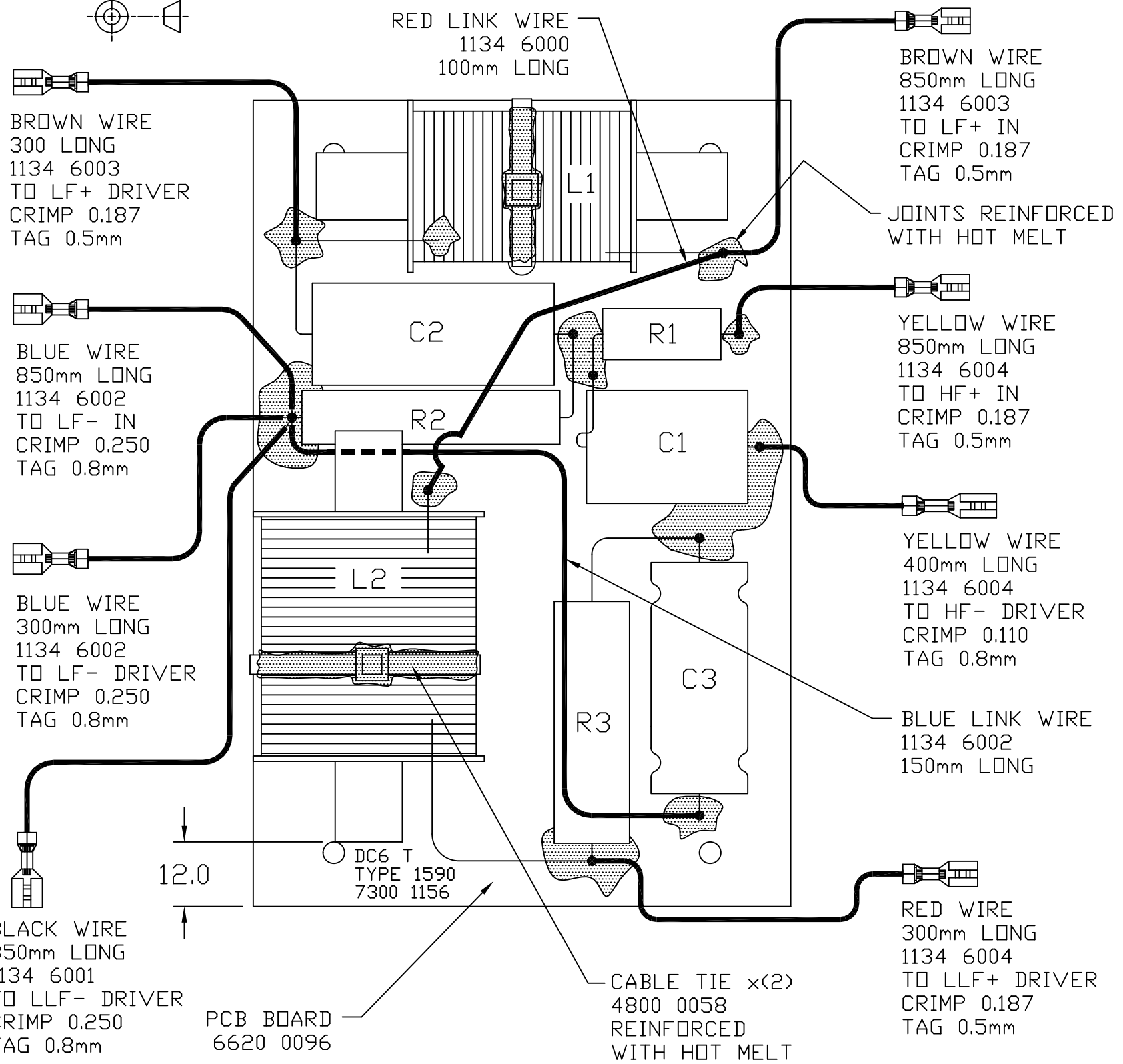
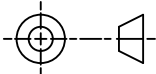


THIRD ANGLE PROJECTION

\*\*\* NOTE PRINT PRODUCT PART AND TYPE NUMBER \*\*\*



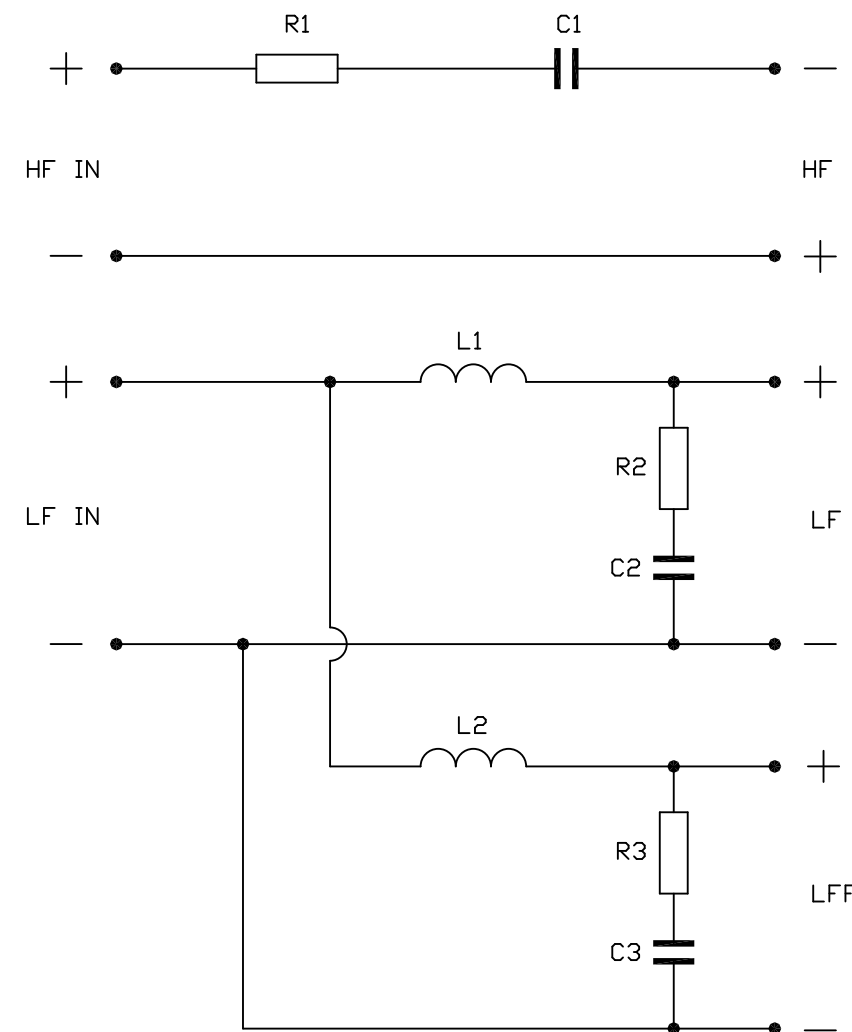
R1	2R2	5W	2252 9425
R2	1R5	9W	2252 3166
R3	2R2	17W	2252 3008

C1	2u7	160V DMT	7100 0114
C2	20u	100V	2606 1333
C3	100u	100V N/P	2753 3387

L1	1.3mH	LAM CORE	6811 0141
L2	9.0mH	LAM CORE	6811 0142

NOTE:

ALL TERMINATED WIRES FORM  
LEAD ASSEMBLY 7500 0654



PART No.

7300 1156

First used on

REVOLUTION

Issues

A 22/08/06 MS

- NOTES:
1. ENSURE COMPONENTS ARE SECURELY FIXED IN PLACE USING HOTMELT, WITH DESCRIPTIONS VISIBLE.
  2. REINFORCE JOINTS AND CABLE TIES WITH HOT MELT ADHESIVE TO ENSURE COMPONENT SECURITY. SEE -
  3. ENSURE FIXING HOLES ARE CLEAR OF COMPONENTS AND HOTMELT.
  4. ENSURE COMPONENTS L2 IS POSITIONED ON PCB BOARD AS SHOWN.

# TANNOY.

The contents, information and copyright of this document are the sole property of Tannoy Ltd and must not be published applied or copied without the express knowledge & permission of the owners.

MATERIAL

FINISH

ALL DIMENSIONS IN MILLIMETRES

Limits of tolerance unless stated:

One place of decimal dim.

Two places of decimal dim.

Holes 12.0mm dia. & under

Holes over 12.0mm dia.

**RoHS Compliant**

Drawn

Checked

Approved

Scale 1:1

TITLE CROSSOVER - TYPE 1590 REVOLUTION DC6 T

**A3**

7300 1156