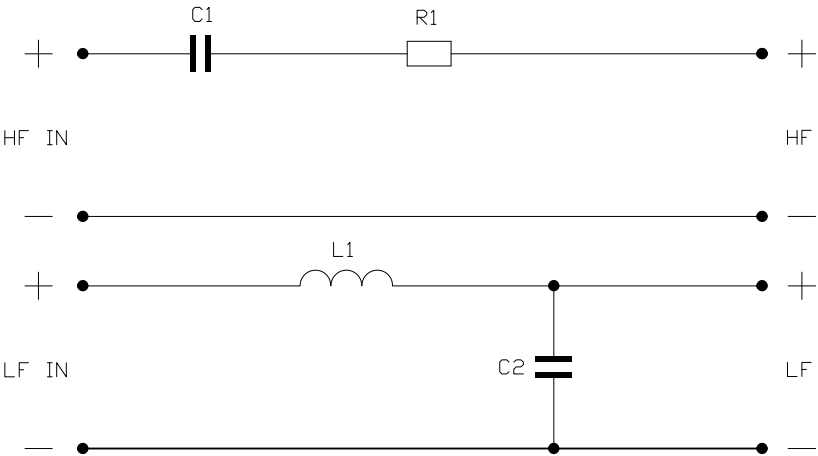



TYPE	DESCRIPTION	NOTES
R1	3R3/9W/5% WW	
C1	1 μ 8/160V	5% POLYPROP/MASTIC DAMPED
C2	12 μ /100V	10% POLYESTER
L1	1.2mH DCR<0.12R	ϕ 1.2mm WIRE, LAM. IRON CORE

A 06/08/14 MP
B 13/10/14 MP
LAYOUT AND
COMPONENTS
ALTERED
R1 3R3 WAS 8R2
R3 OMITTED
L1 1.2mH WAS
0.7mH
C2 12 μ WAS 33 μ

1 06/08/14 MP
2 08/12/14 MP
RESISTOR R2
REMOVED
CR 9004



INTERNAL WIRING - EQUIVALENT TO VAN
DEN HUL CS18 (SILVER PLATED COPPER)

- NOTES:
1. ENSURE COMPONENTS ARE SECURELY FIXED IN PLACE USING HOTMELT, WITH DESCRIPTIONS VISIBLE.
 2. REINFORCE JOINTS AND CABLE TIES WITH HOT MELT ADHESIVE TO ENSURE COMPONENT SECURITY. SEE - 
 3. ENSURE FIXING HOLES ARE CLEAR OF COMPONENTS AND HOTMELT GLUE.
 4. ENSURE COMPONENT L1 IS POSITIONED ON PCB BOARD AS SHOWN.