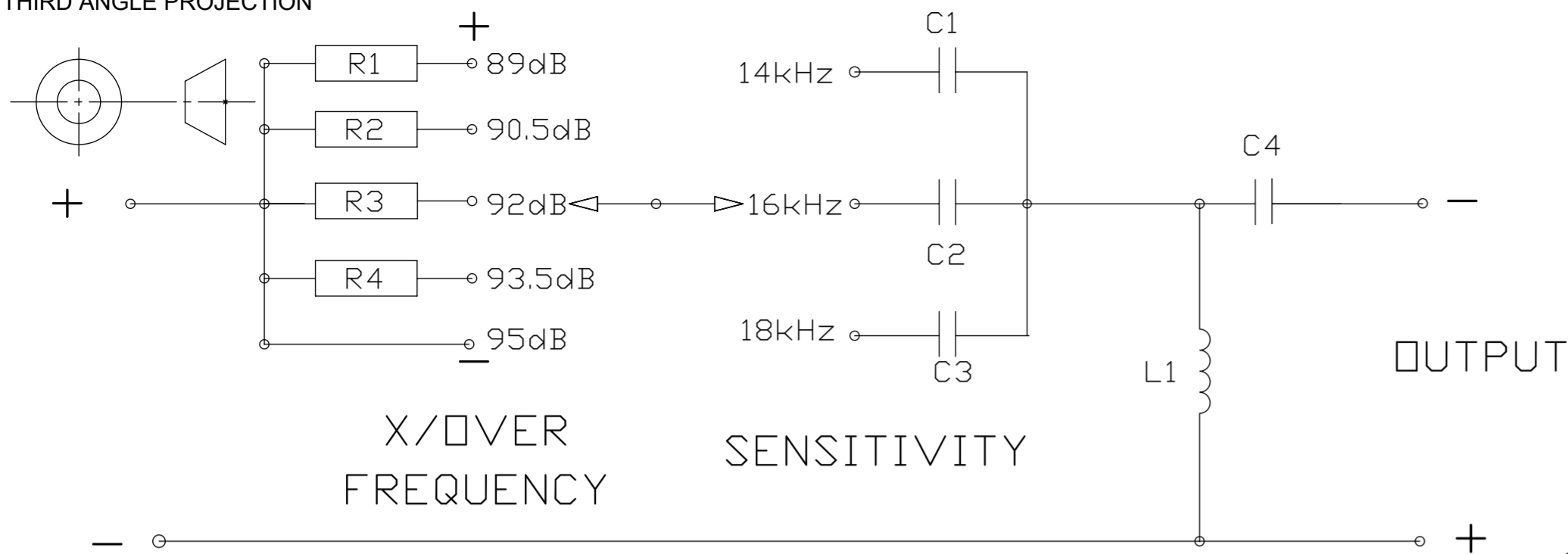


THIRD ANGLE PROJECTION



ELECTRICAL COMPONENT TABLE					
C1	4 μ 7	2606 0655	R1	6R8	2252 0270
C2	3 μ 3	2606 0675	R2	4R7	2252 0268
C3	2 μ 2	2606 0674	R3	3R3	2252 0266
C4	4 μ 7	2606 0655	R4	1R5	2252 0262
L1	25 μ	7100 0210			

ITEM NO.	PART NUMBER	DESCRIPTION	QTY.
1	66200112	BOARD - PCB - SUPERTWEETER 2	1
2	26060675	CAPACITOR 3m3F 160V	1
3	26060655	CAPACITOR - 4m7F 160V	2
4	26060674	CAPACITOR - 2m2F 160V	1
5	71000210	Choke - 0.025mH AIR CORE	1
6	22520270	RESISTOR - 5w 6R8	1
7	22520262	RESISTOR - 5w 1R5	1
8	22520266	RESISTOR - 5w 3R3	1
9	22520268	RESISTOR - 5W 4R7	1
10	47830774		2
12	49400114	CROSSOVER MOULDING ASSY - ST-300Mg/PRESTIGE GR SUPERTWEETER	1
13	44194910	SCREW M4x10 PAN POSI BLK PLASTITE	1

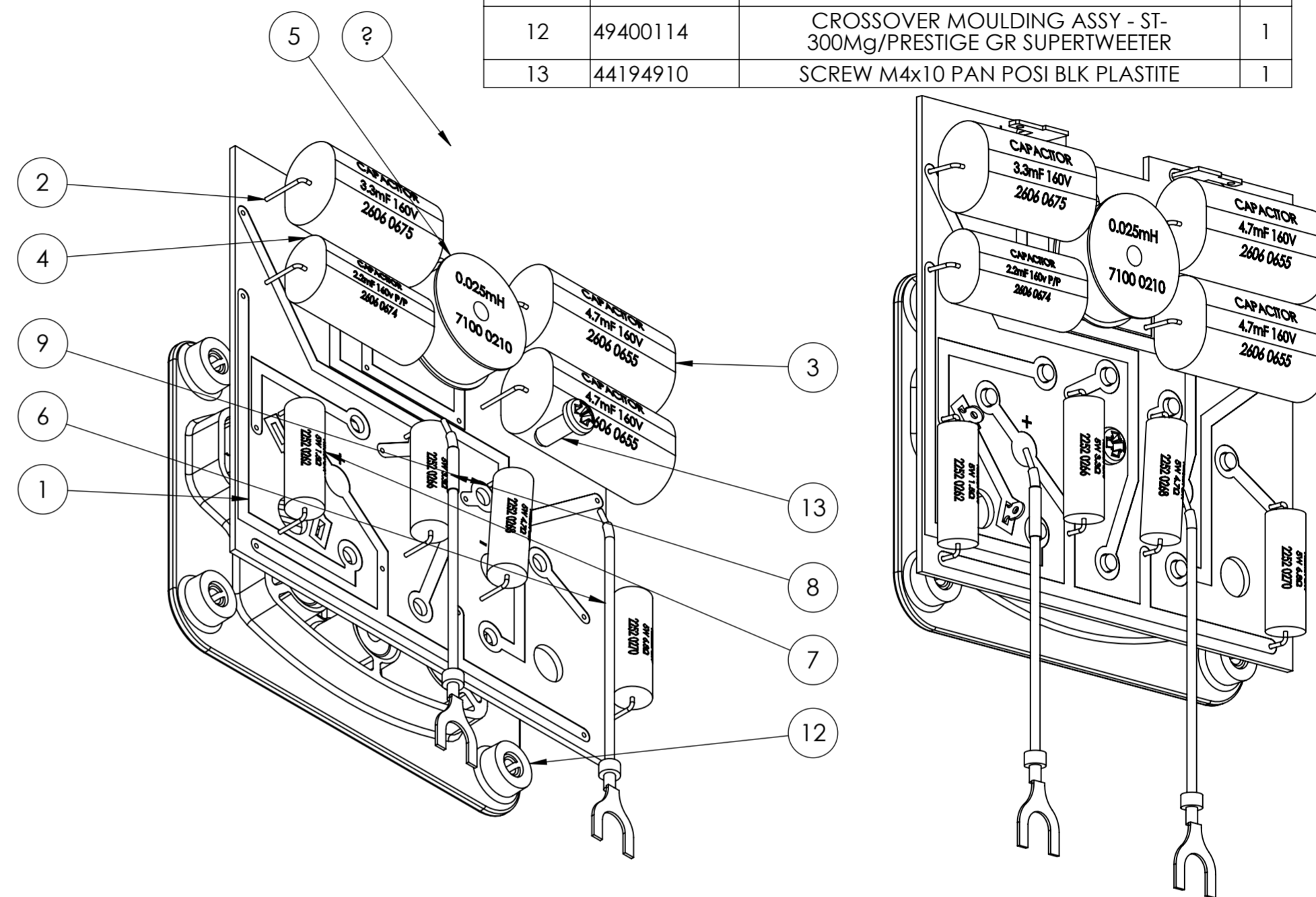
Part No.
73001477

First used on
SUPERTWEETER 2

Issues
A 08/05/15 KMCC

B 23/07/15 KMCC
SOLDER AND
HEAT SHRINK
NOTES ADDED.

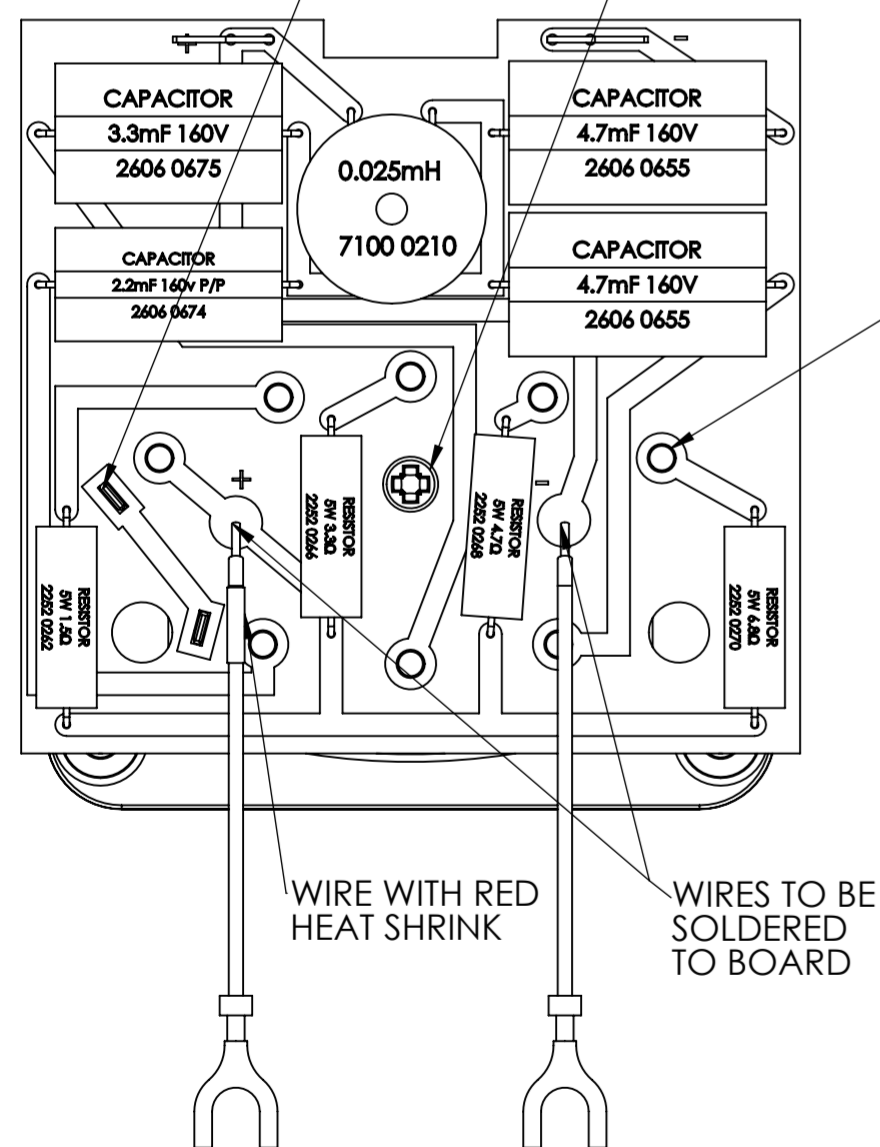
1 08/05/15 KMCC



CONTACT PLATES LEGS ON 4940 0114 TO BE SOLDERED TO PCB IN 2 LOCATIONS

CROSSOVER MOULDING TO BE SCREWED TO PCB BEFORE SOLDERING.

TERMINAL PINS ON 4940 0114 TO BE SOLDERED TO PCB IN 8 LOCATIONS



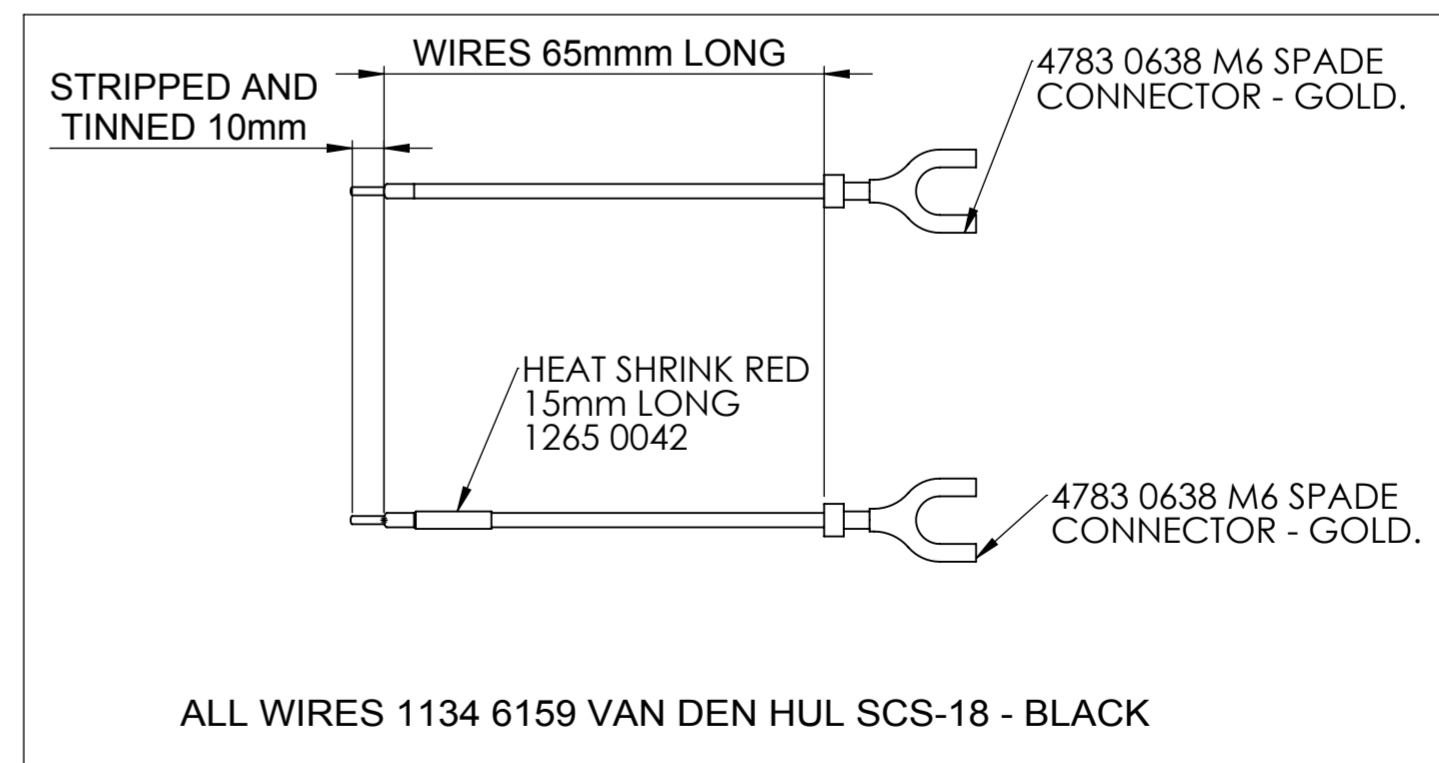
WIRE WITH RED HEAT SHRINK

WIRES TO BE SOLDERED TO BOARD

NOTES;

1. ALL TERMINAL PINS AND CONTACT STRIPS FROM MOULDING TO BE SOLDERED TO PCB.
2. ALL ELECTRICAL COMPONENTS LISTED IN COMPONENT TABLE TO BE SOLDERED TO PCB.
3. BOTH TERMINAL TABS (4783 0774)) TO BE SOLDERED TO PCB.
4. SOLDER; LEAD FREE, SILVER LOADED

PCB COMPONENTS AND SOLDER MUST NOT EXTEND FURTHER THAN 2mm FROM UNDERSIDE OF PCB



ALL WIRES 1134 6159 VAN DEN HUL SCS-18 - BLACK

FOR ESTIMATING PURPOSES ONLY NO TOOLING OR PRODUCTION PARTS TO BE MADE TO THIS DRAWING.

Sheet 1 of 1

RoHS Compliant

Drawn K.McCrorie

Checked

Approved

Scale 1:1

73001477

TANNOY

The contents, information and copyright of this document are the sole property of Tannoy Ltd and must not be published, applied or copied without the express knowledge & permission of the owners.

MATERIAL

FINISH

TITLE CROSSOVER - TYPE 1817 - ST-300Mg/PRESTIGE GR SUPERTWEETER

CROSSOVER - TYPE 1817 - ST-300Mg/PRESTIGE GR SUPERTWEETER **A2**