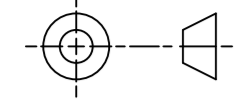


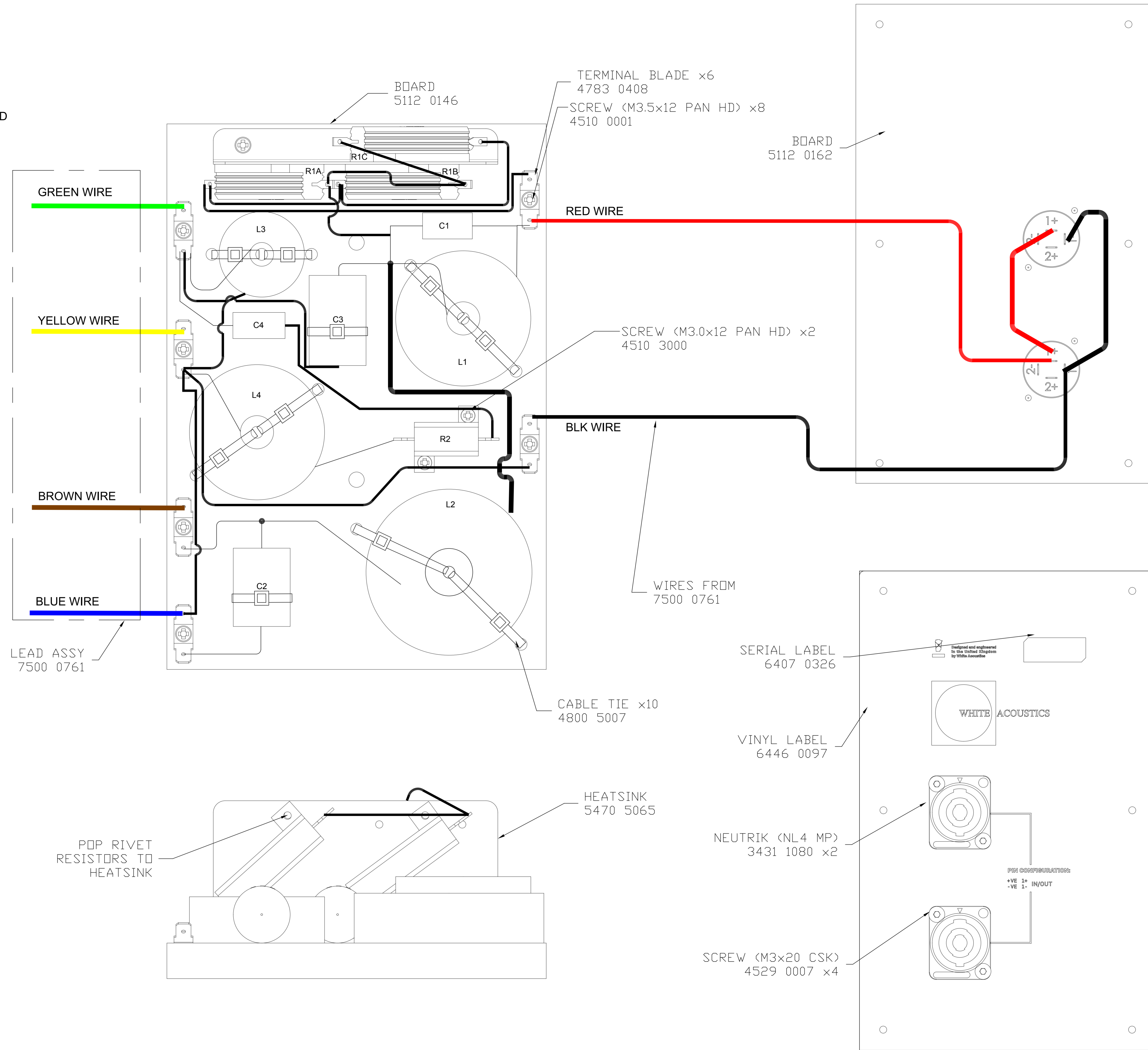
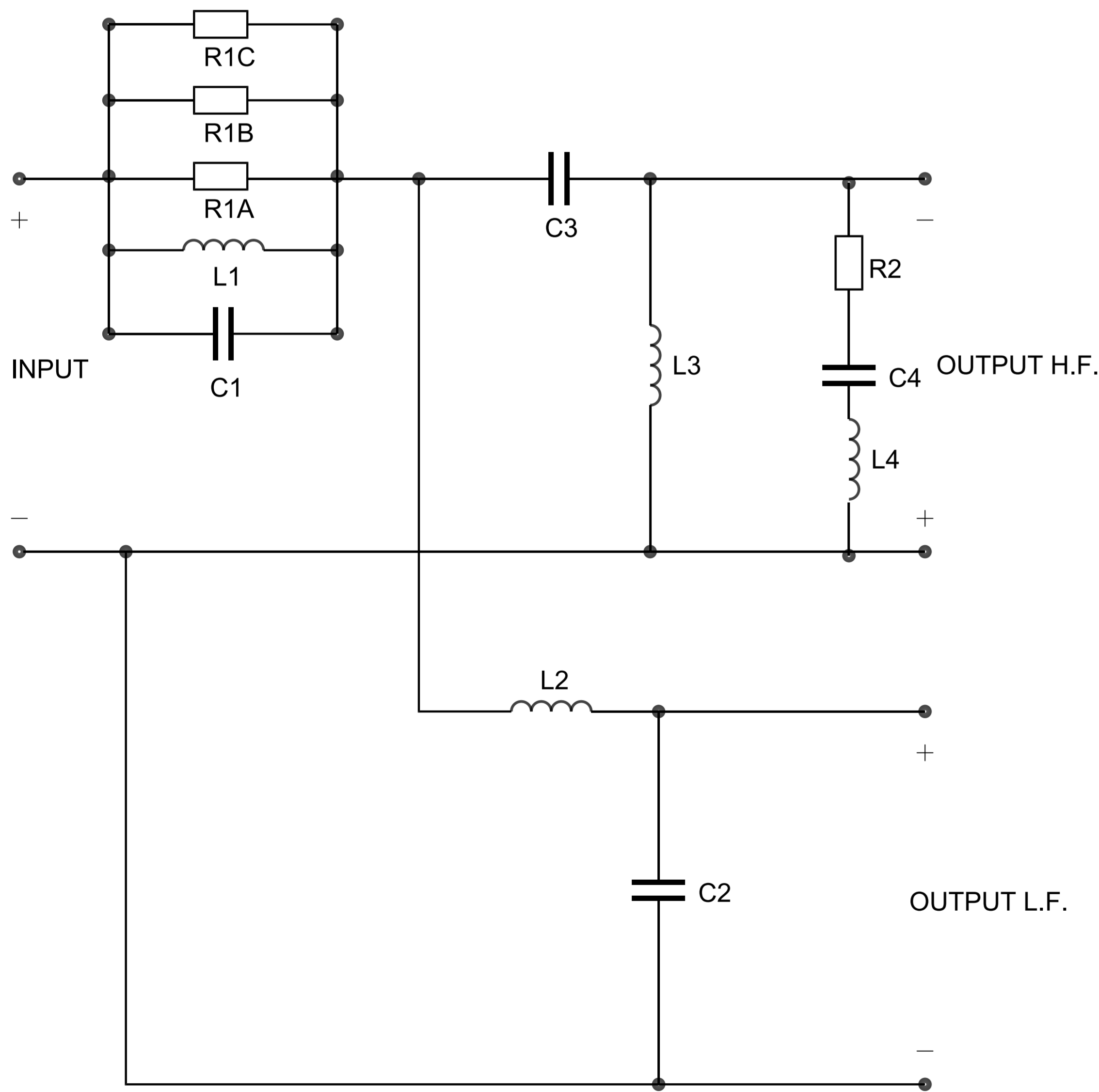
THIRD ANGLE PROJECTION



NOTES:-

1. ALL COMPONENTS TO BE GLUED AND TIE WRAPPED TO BOARD.
2. R1 RESISTORS TO BE FITTED TO A HEATSINK.
3. H.F. OUTPUT PHASE REVERSED.
4. ENSURE SERIAL NUMBER IS VISIBLE THROUGH CLEAR WINDOW IN VINYL LABEL
5. ENSURE VINYL LABEL IS LOCATED PROPERLY AROUND HOLES FOR NEUTRIKS
6. ENSURE A ADDITIONAL SERIAL LABEL IS HIDDEN UNDER THE CROSSOVER BOARD
7. ALL LINK WIRE TO BE 16 AWG WIRE

C1	MKP CAPACITOR	±5%	250V DC	0.9uF	2606 1476
C2	MKP CAPACITOR	±5%	250V DC	12uF	2606 1481
C3	MKP CAPACITOR	±5%	250V DC	15uF	2606 1482
C4	MKP CAPACITOR	±5%	250V DC	1.5uF	2606 1477
L1	AIR CORE INDUCTOR	±5%	DCR<0.8	1.1mH	7100 0198
L2	AIR CORE INDUCTOR	±5%	DCR<0.4	1.3mH	7100 0132
L3	AIR CORE INDUCTOR	±5%	DCR<0.3	0.16mH	7100 0200
L4	AIR CORE INDUCTOR	±5%	DCR=1.5	2.7mH	7100 0201
R1A	ALUMINIUM CLAD WIREWOUND RESISTOR	±5%	50W	39R	2252 9386
R1B	ALUMINIUM CLAD WIREWOUND RESISTOR	±5%	50W	39R	2252 9386
R1C	ALUMINIUM CLAD WIREWOUND RESISTOR	±5%	50W	47R	2252 9376
R2	ALUMINIUM CLAD WIREWOUND RESISTOR	±5%	25W	5R6	2252 9315



Part No.

7300 1344

First used on

WA12F

Issues

A 19/04/11 MS

B 19/09/13 MD
TP CHANGED

C 21/11/13 MD
WIRING UPDATED
TO MATCH NEW
STANDARD

FOR ESTIMATING PURPOSES ONLY
NO TOOLING OR PRODUCTION
PARTS TO BE MADE TO THIS
DRAWING

TANNOY

The contents, information and copyright of this document are the sole property of Tannoy Ltd and must not be published, applied or copied without the express knowledge & permission of the owners.

MATERIAL

FINISH

TITLE CROSSOVER TYPE 1722 - WA12F

CROSSOVER TYPE 1722 - WA12F

A1

7300 1344

ALL DIMENSIONS IN MILLIMETRES

T.T.S copy of

Limits of tolerance unless stated:

Exp. No.

One place of decimal dim.

Drawn

Two places of decimal dim.

Checked

Holes 12.0mm dia. & under

Approved

Holes over 12.0mm dia.

Scale