

Service Note

Product	Description:	Service note no.
M2000	Wrong placement of D18	720 10 T010

IMPORTANT:

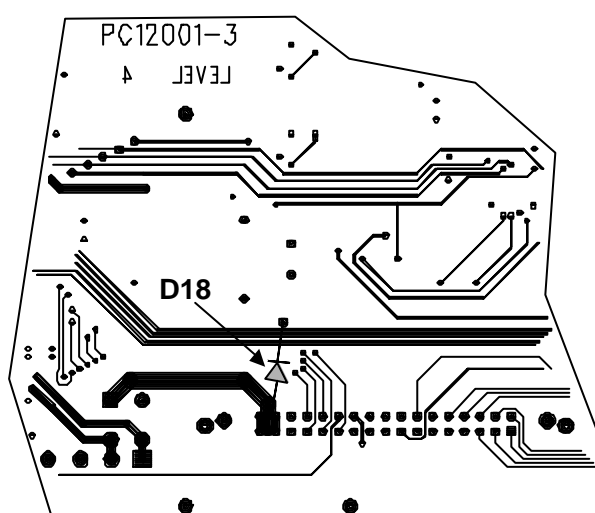
This service note only concerns units with serial no. between 1105281 and 1105380. A few units in the above mentioned serial no. area might have wrong placement of the diode D18, which is mounted on the solder side of the main board. Modification should only be carried out by skilled technicians.

Symptoms before correction:

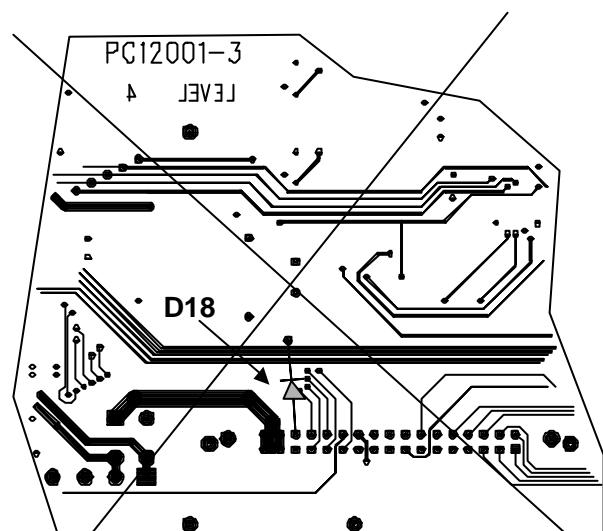
The M2000 cannot start up, the backlight is on, but there is no text on the display. Or the unit cannot lock to digital input. The symptoms might be intermittent.

Procedure:

1. Turn Off Power and Disconnect Power Cord.
2. Dismount the top lid.
3. Check the white label on the main board.
If it reads B5642 or B5677, please continue this procedure.
But if it reads something else, the placement of the diode is already correct.
4. Dismount the main board in this way:
 - a. Disconnect front connection, J2.
 - b. Remove screws at MT7, MT8, MT2 on the main board.
 - c. Remove screws at the XLR connectors on the back panel.
 - d. Remove screw at SPDIF in/out connector.
 - e. Remove jack nut at PEDAL IN.
 - f. Push the main board into the front profile a little to free the connectors from the backpanel, then lift out the board.
5. Check the placement of D18 on the solder side of the main board, see figures below.



Correct placement of D18



Wrong placement of D18