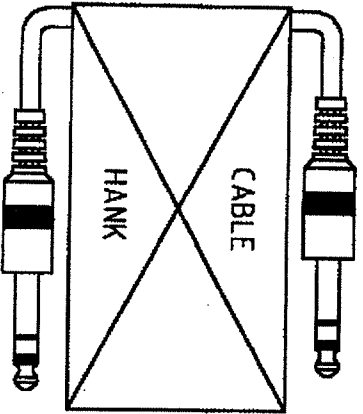
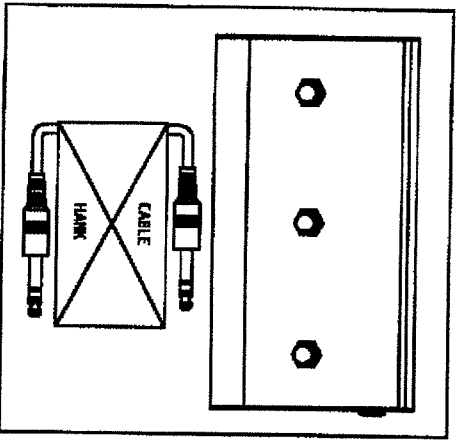


1/4" STEREO JACK PLUG

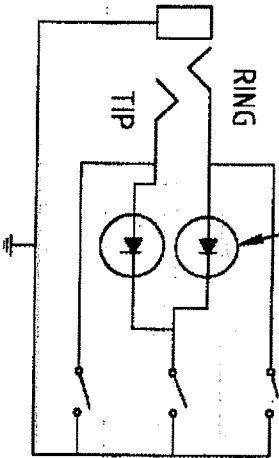


1/4" STEREO JACK PLUG



PACK 1 PC PER CARTON WITH CABLE
CARTON PRINTED ONE COLOUR ON TOP

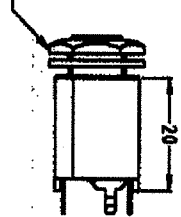
CABLE LENGTH
5000mm ±50



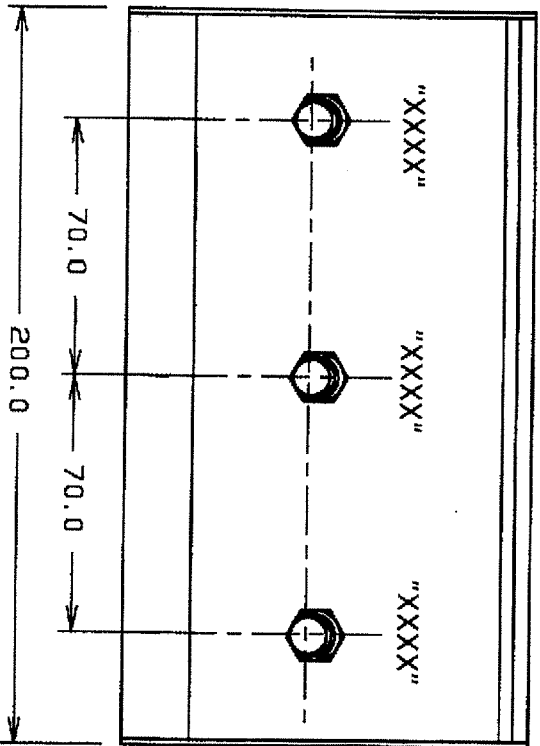
BATA42

CIRCUIT

METAL NUT
& WASHER

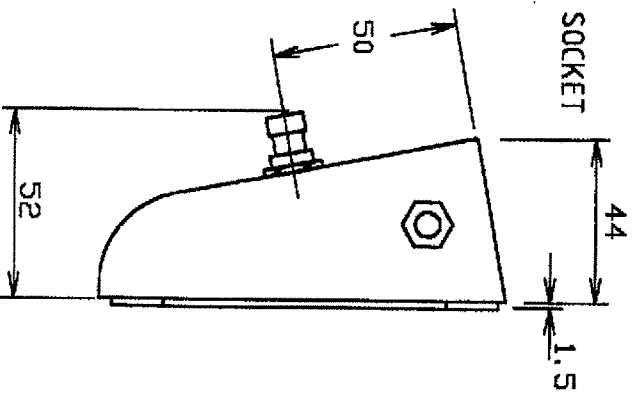


PREFERRED JACK SOCKET
1/4" STEREO VERTICAL TYPE
e.g. JYE TAI JY6353-02-030



1/4" JACK SOCKET

110



Switches
are DPDT
with poles
linked.
"XXXX" PRINTED AS
PER ARTWORK

DIMENSIONS IN MILLIMETERS UNLESS OTHER WISE STATED. WORK TO DIMENSIONS. DO NOT SCALE DRAWING. 3rd ANGLE PROJECTION. REMOVE ALL BURRS. IF IN DOUBT ASK.

Cliff Electronic Components Ltd.

76 Haldenridge Ave., Haldenridge Ind Estate,
Redhill, Surrey, RH1 2PF, England
Tel: 01873-771075 Fax: 01873-744412

MATERIAL COMPOSITE
FINISH CLEAN
DRAWN CAMJ

APPRO. RWT

TITLE TRIPLE FOOTPEDAL

DRWG. No. **FCR 6921P**

FORM A4000/1

ISS.	AMEND	DATE
A	1st DRAWN	5/21/02
B	DETAILS ADDED	8/22/02

TOLERANCE
NO DEC. PLACE ±
1 DEC. PLACE ± 0.20
2 DEC. PLACE ±
HOLE DIA. ±
ANGLES ±
UNLESS
OTHERWISE STATED

WHERE USED F.R.
SCALE N.T.S.