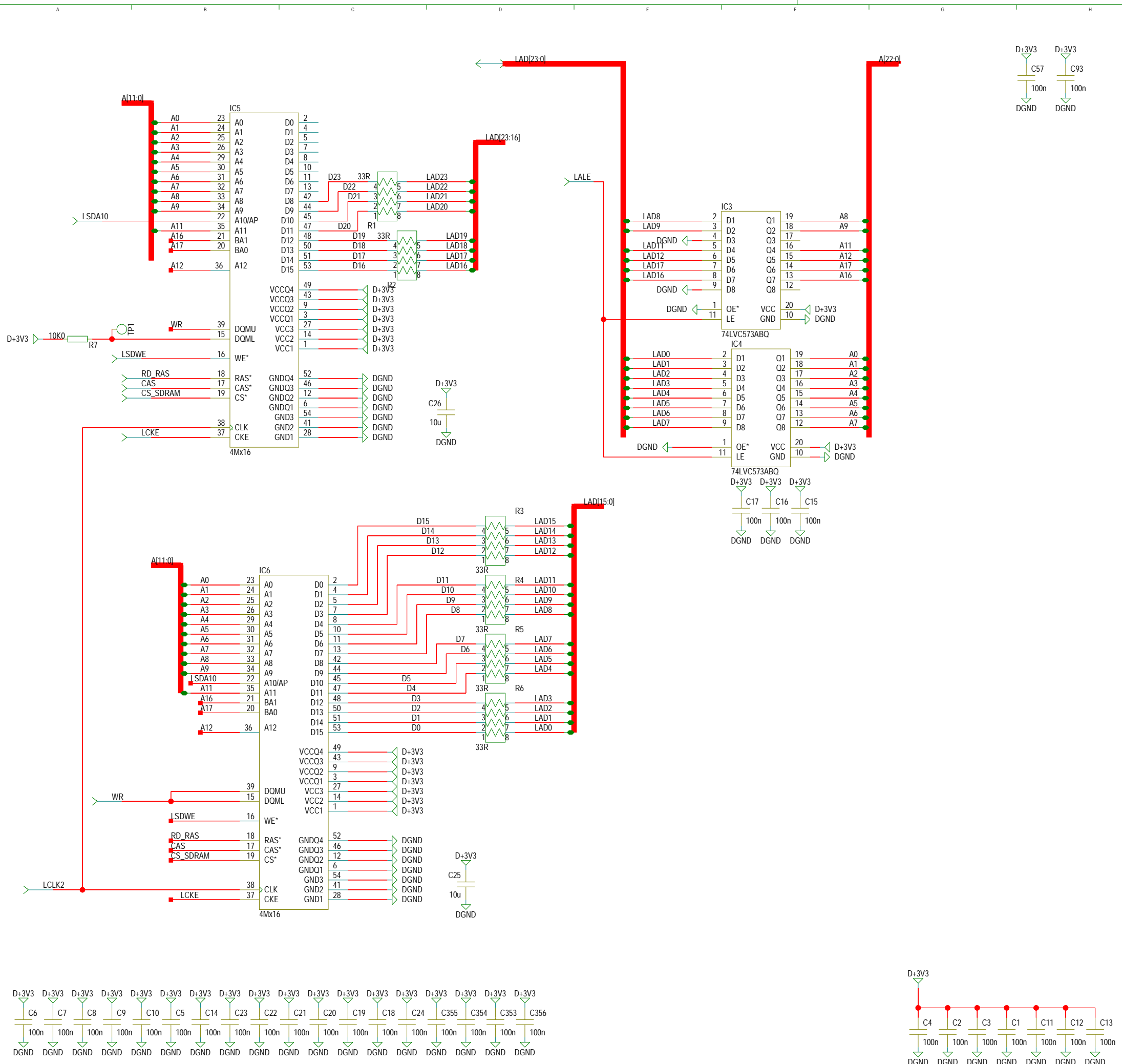
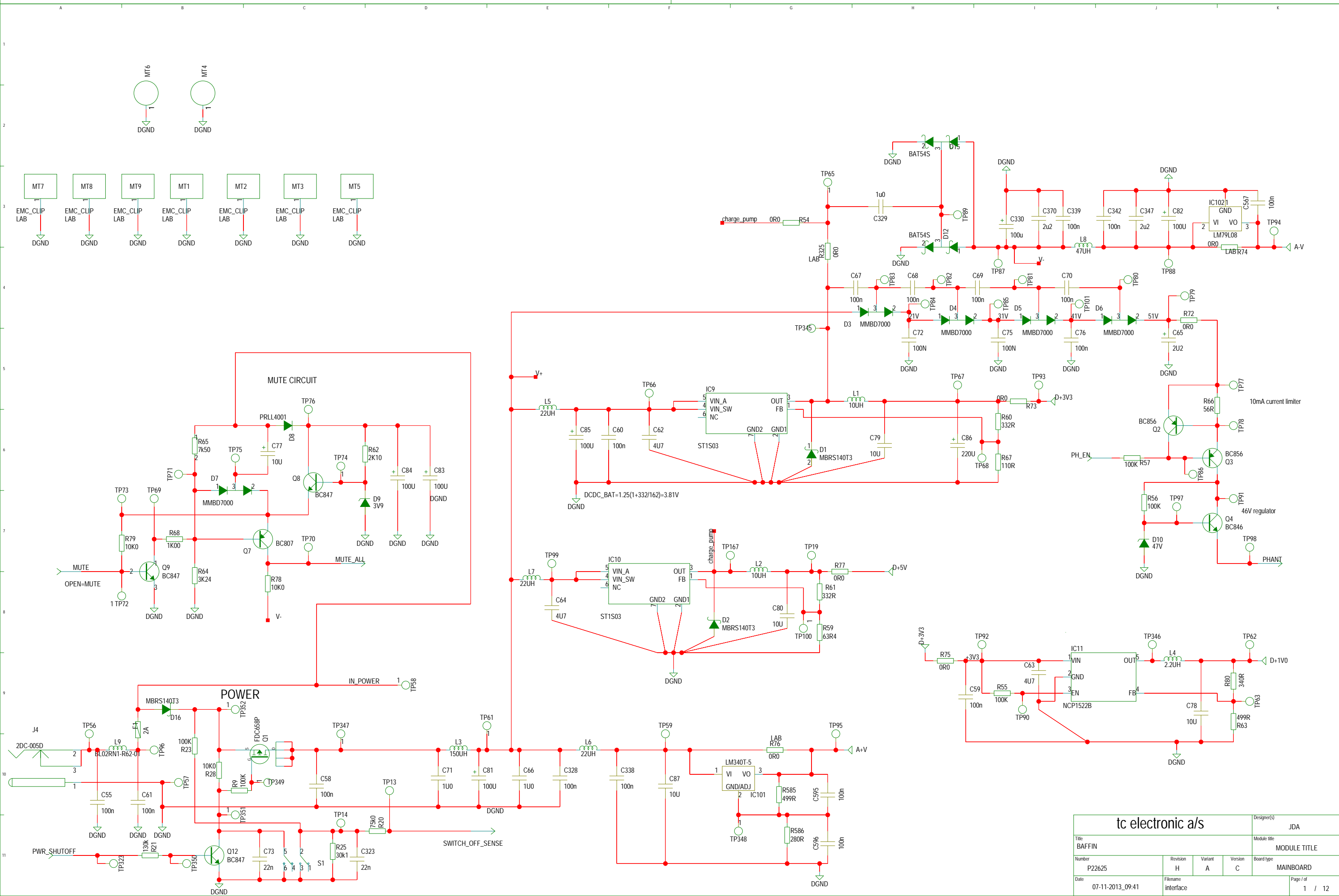


- M2Micro-SD Card
4GB
- M1
P22625-H

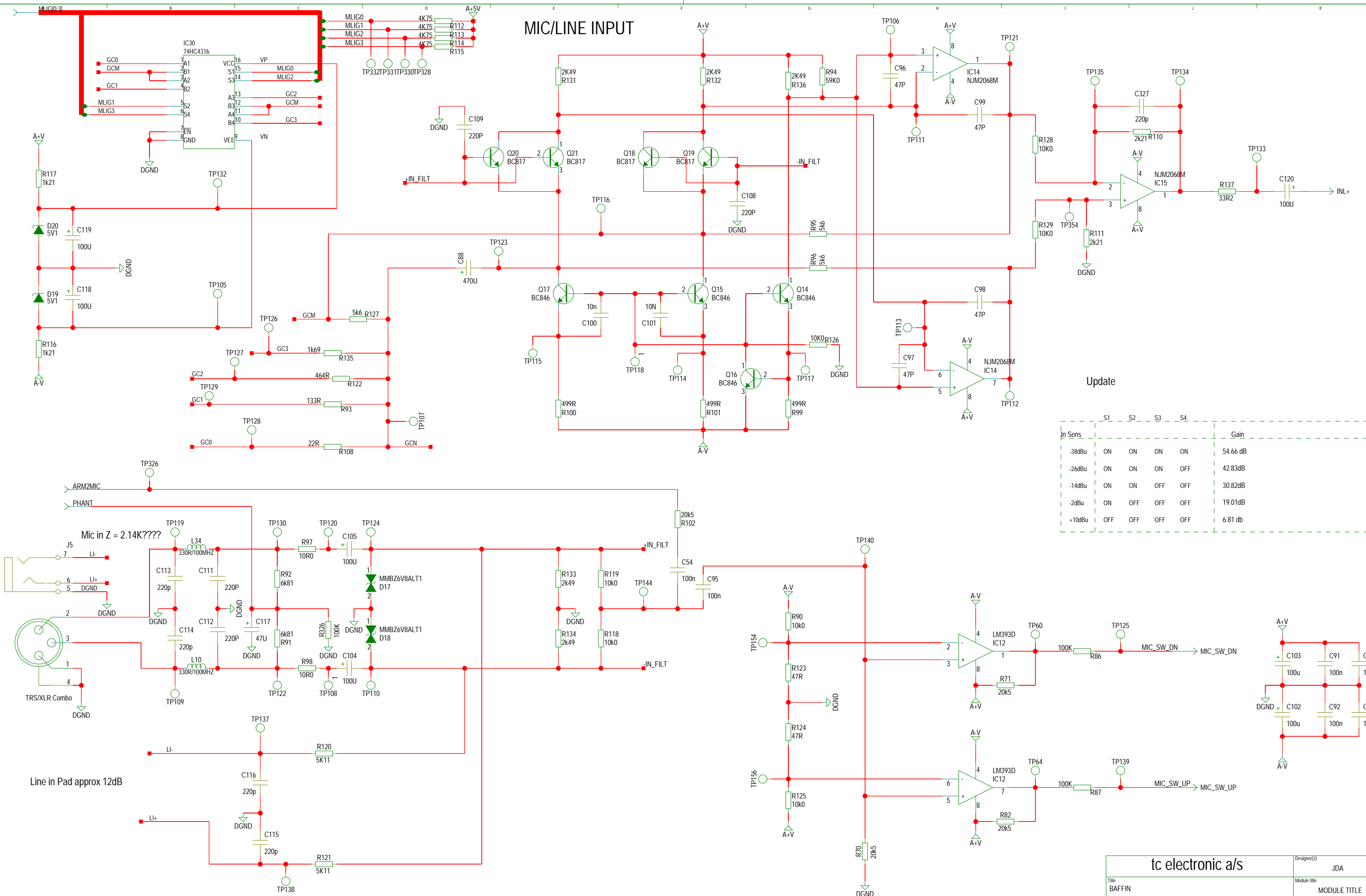
tc electronic a/s				Designer(s) JDA	
Title BAFFIN				Module title MODULE TITLE	
Number P22625	Revision H	Variant A	Version C	Board type MAINBOARD	
Date 07-11-2013_09:41	Filename p22625-F			Page / of 1 / 12	



tc electronic a/s				Designer(s) JDA
Title BAFFIN	Module title MODULE TITLE			Board type MAINBOARD
Number P22625	Revision H	Variant A	Version C	Page / of 1 / 12
Date 07-11-2013_09:41	Filename memory			



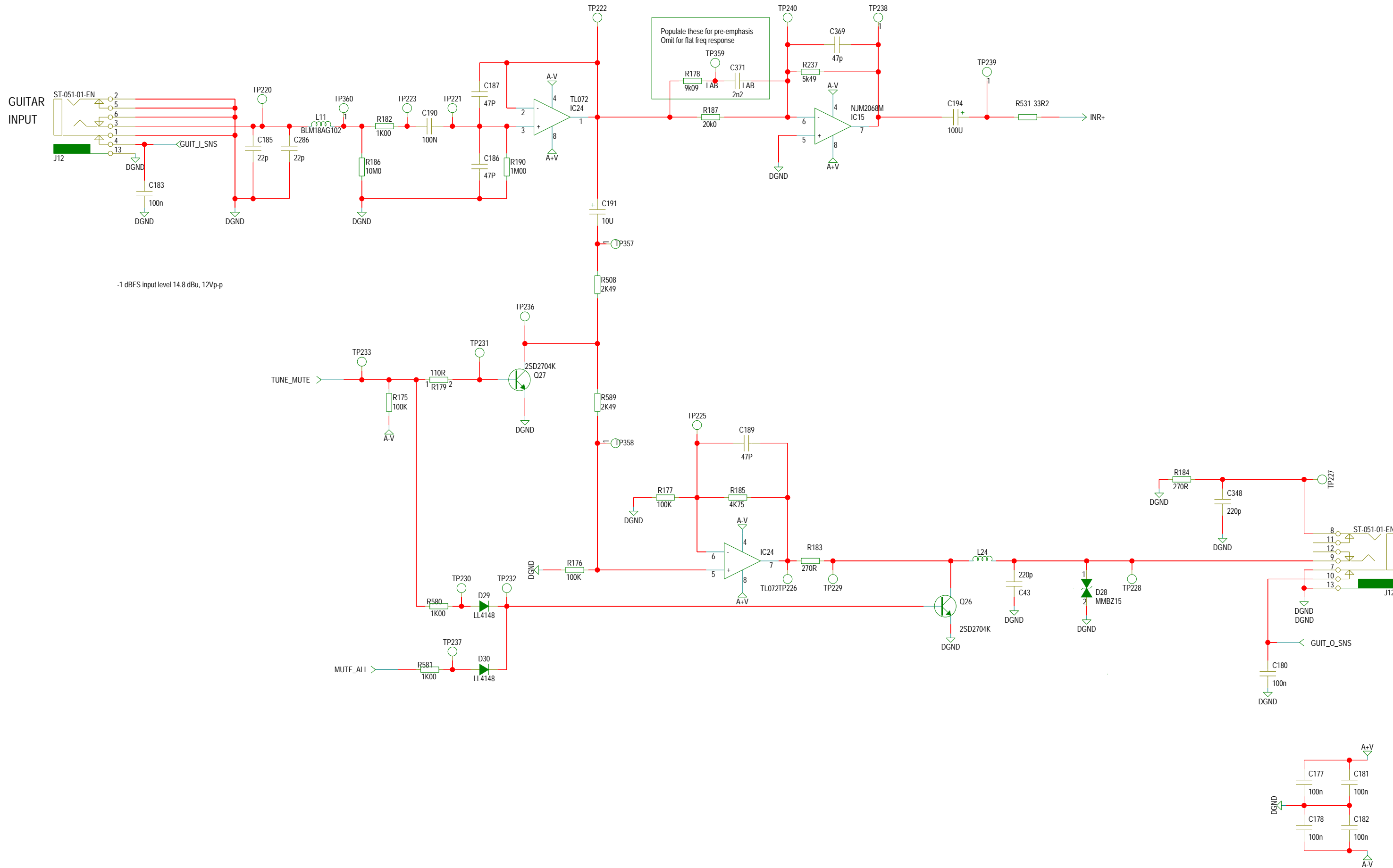
tc electronic a/s				Designer(s) JDA
Title BAFFIN	Revision H			Module title MODULE TITLE
Number P22625	Variant A	Version C	Board type MAINBOARD	
Date 07-11-2013_09:41	Filename interface	Page / of 1 / 12		



Update

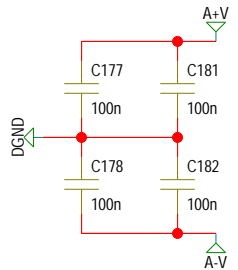
	S1	S2	S3	S4	Gain
In Sens					
-3dBu	ON	ON	ON	ON	54.66 dB
-26dBu	ON	ON	ON	OFF	42.83dB
-14dBu	ON	ON	OFF	OFF	30.82dB
-2dBu	ON	OFF	OFF	OFF	19.01dB
+10dBu	OFF	OFF	OFF	OFF	6.81 db

DECOUPLING FOR INPUT SECTION

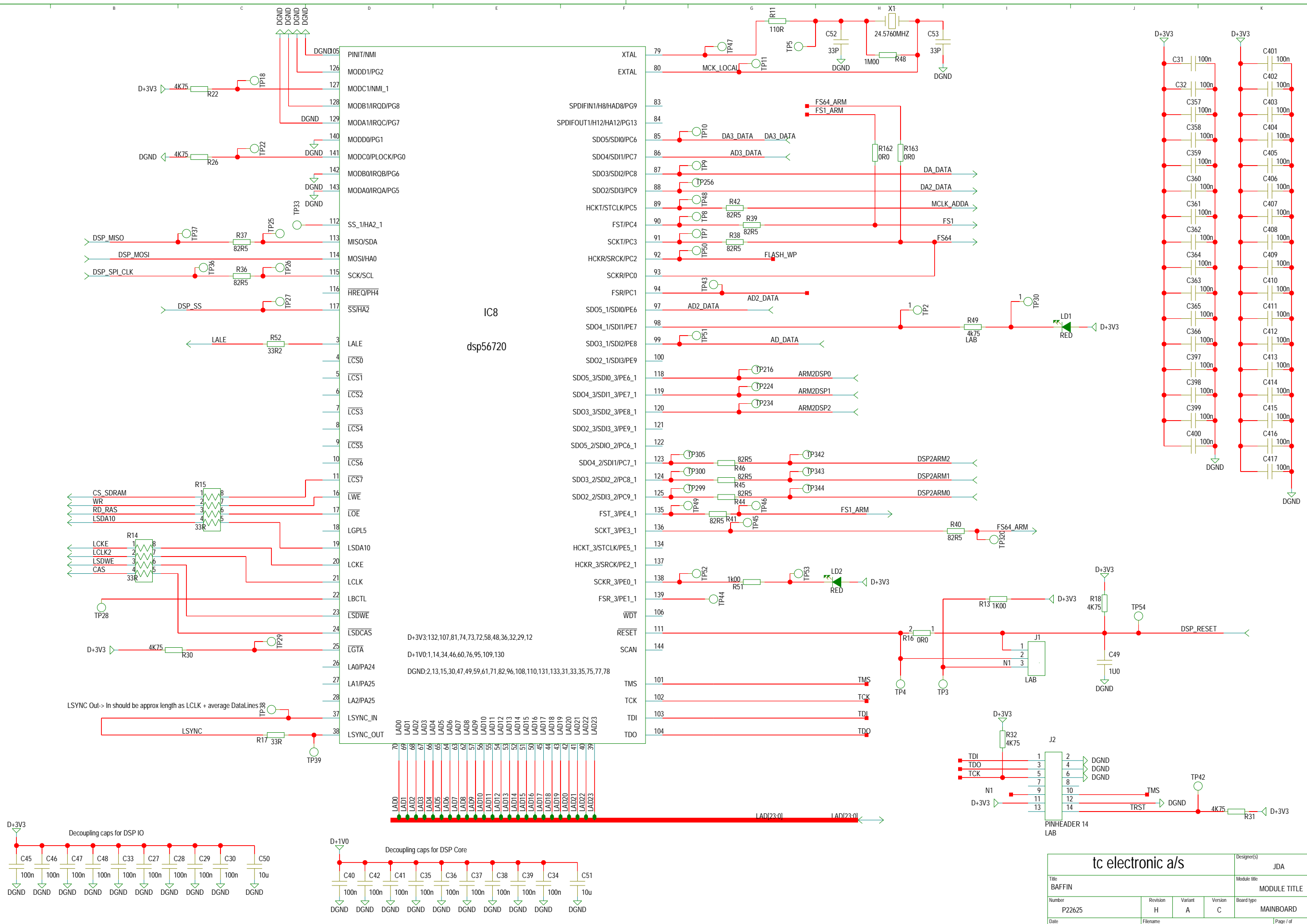


-1 dBFS input level 14.8 dBu, 12Vp-p

Populate these for pre-emphasis
 Omit for flat freq response



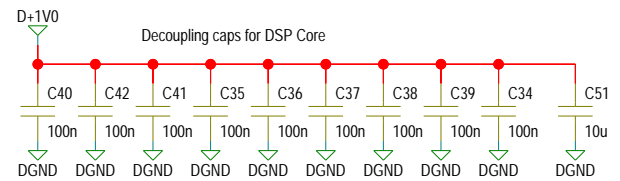
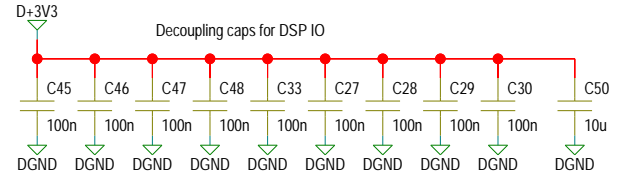
tc electronic a/s				Designer(s)	JDA
Title BAFFIN				Module title MODULE TITLE	
Number P22625	Revision H	Variant A	Version C	Board type MAINBOARD	
Date 07-11-2013_09:41	Filename guitar_input			Page / of 1 / 12	



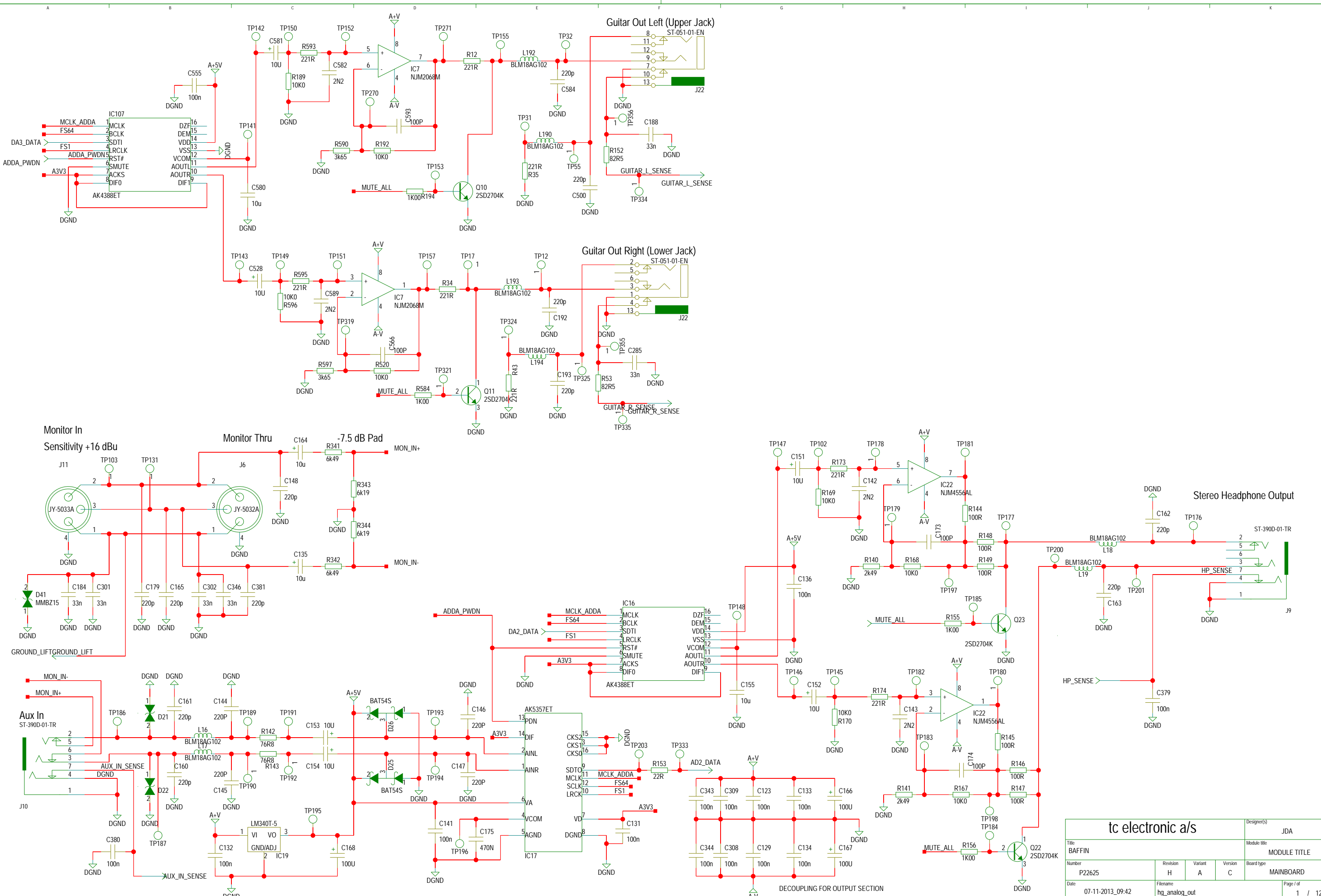
IC8
dsp56720

D+3V3:132,107,81,74,73,72,58,48,36,32,29,12
D+1V0:1,14,34,46,60,76,95,109,130
DGND:2,13,15,30,47,49,59,61,71,82,96,108,110,131,133,31,33,35,75,77,78

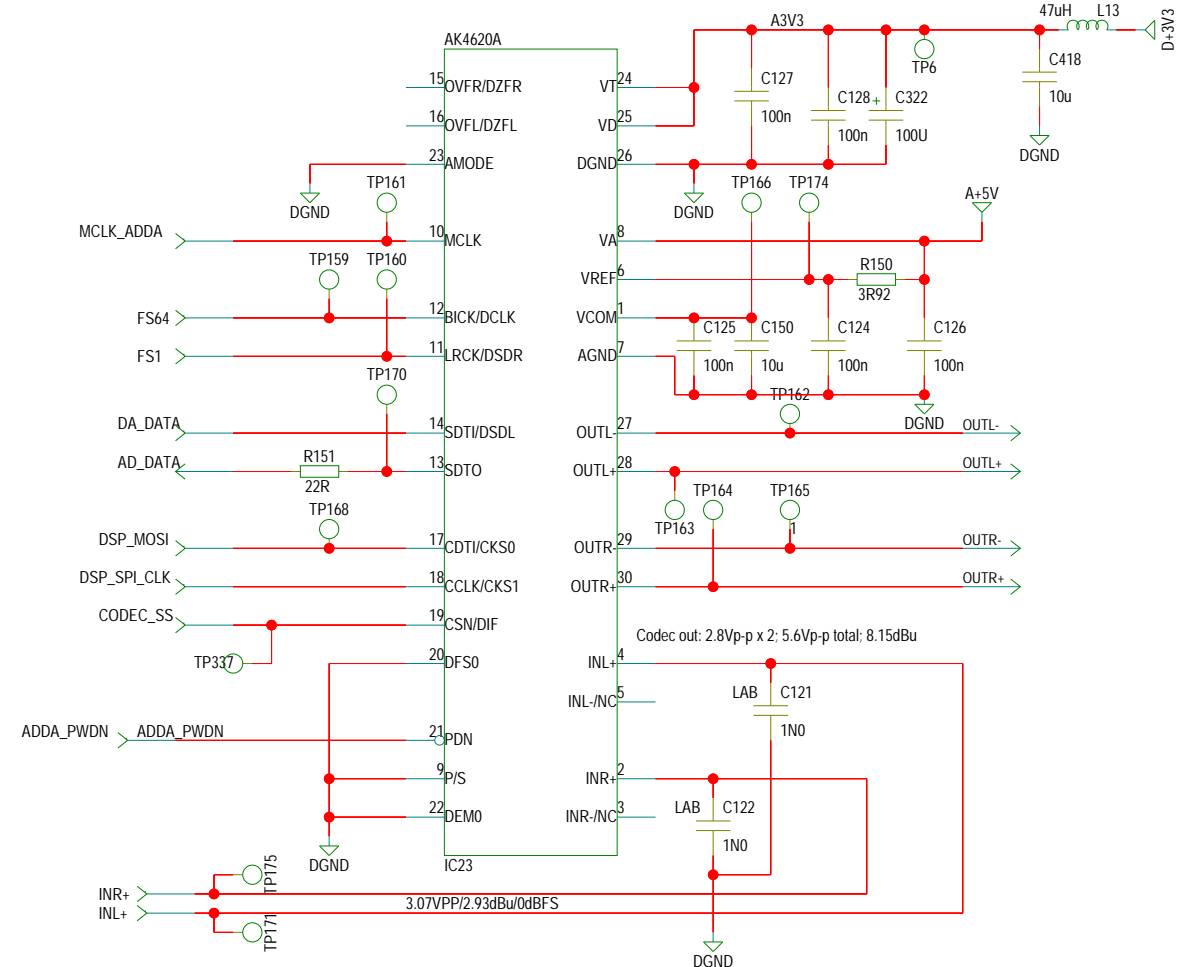
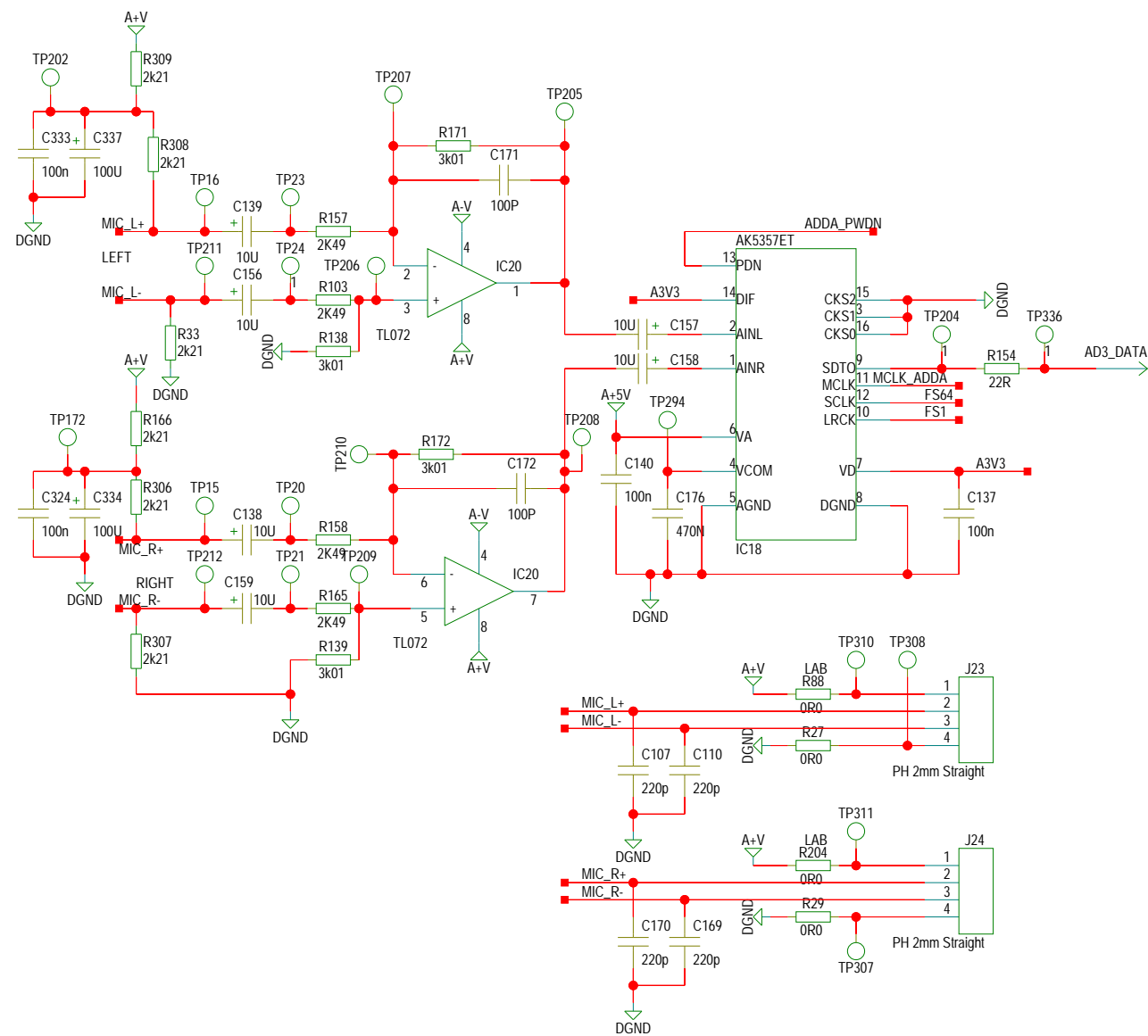
LSYNC Out-> In should be approx length as LCLK + average DataLines



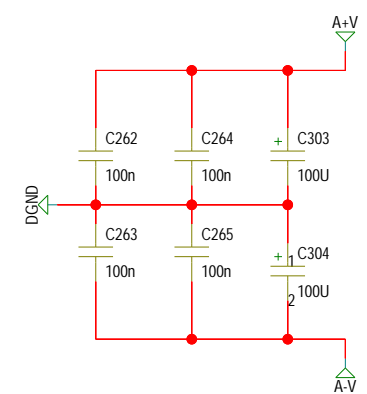
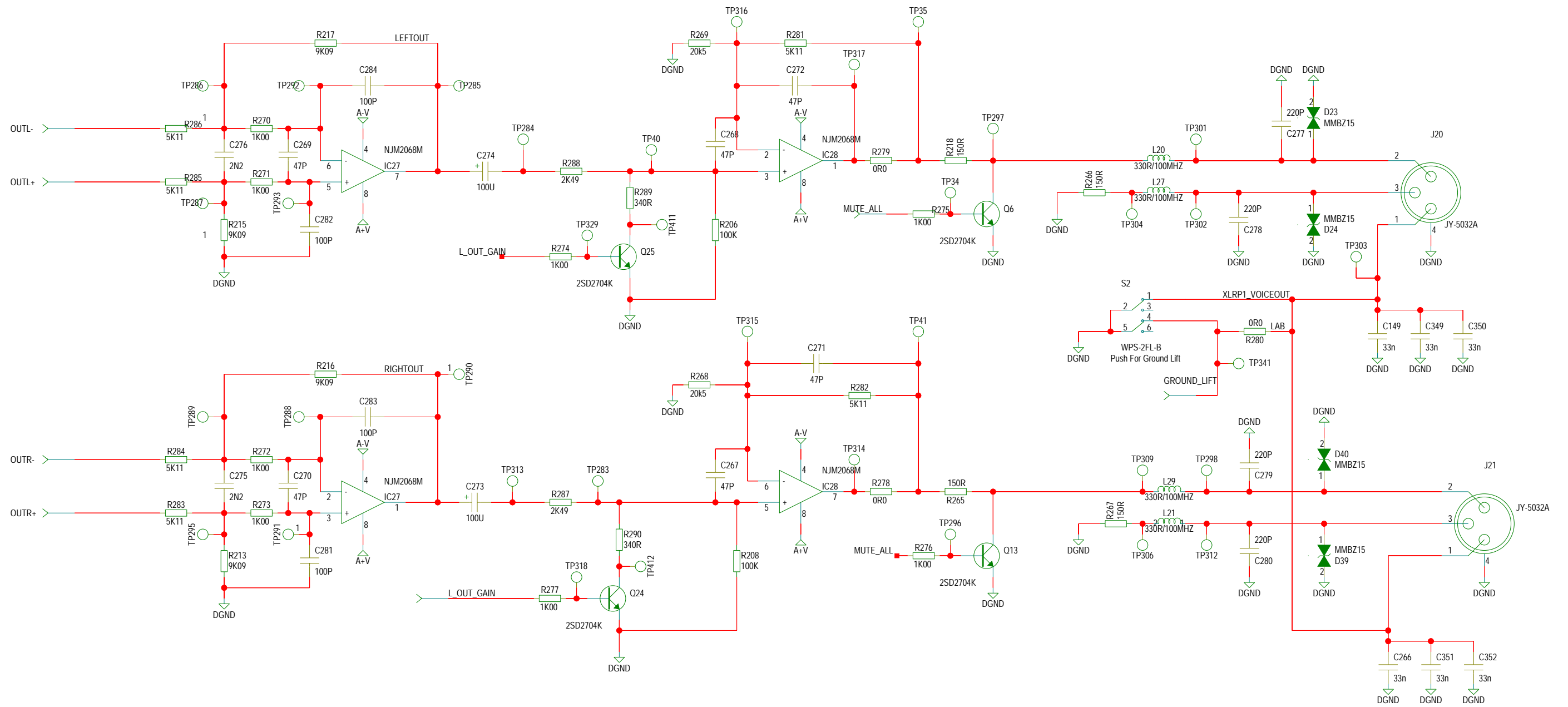
tc electronic a/s				Designer(s)	JDA
Title	BAFFIN			Module title	MODULE TITLE
Number	P22625	Revision	H	Variant	A
Date	07-11-2013_09:41	Version	C	Board type	MAINBOARD
Filename	dsp720			Page / of	1 / 12



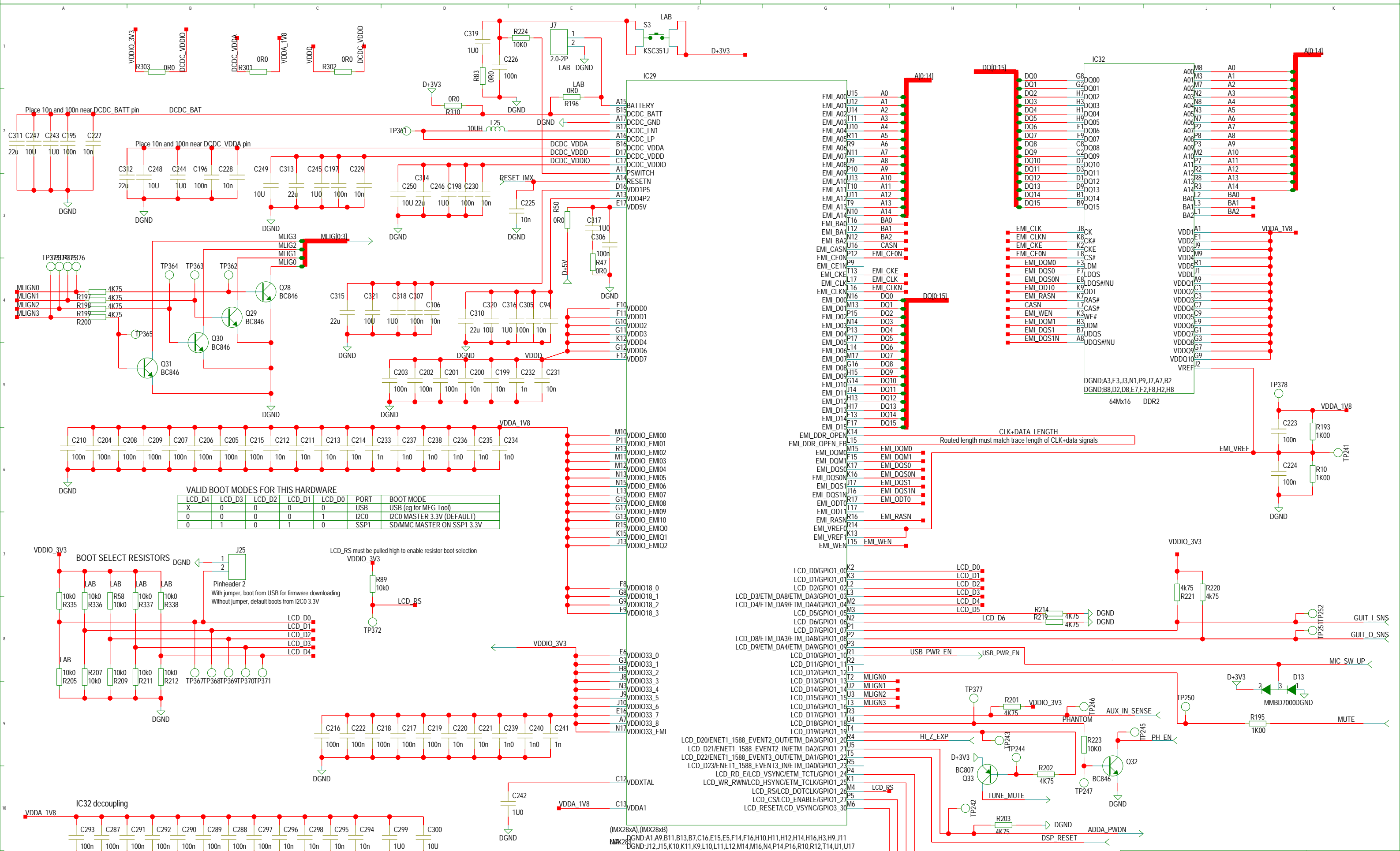
tc electronic a/s				Designer(s) JDA
Title BAFFIN	Revision H			Module title MODULE TITLE
Number P22625	Variant A	Version C	Board type MAINBOARD	
Date 07-11-2013_09:42	Filename hg_analog_out	Page / of 1 / 12		

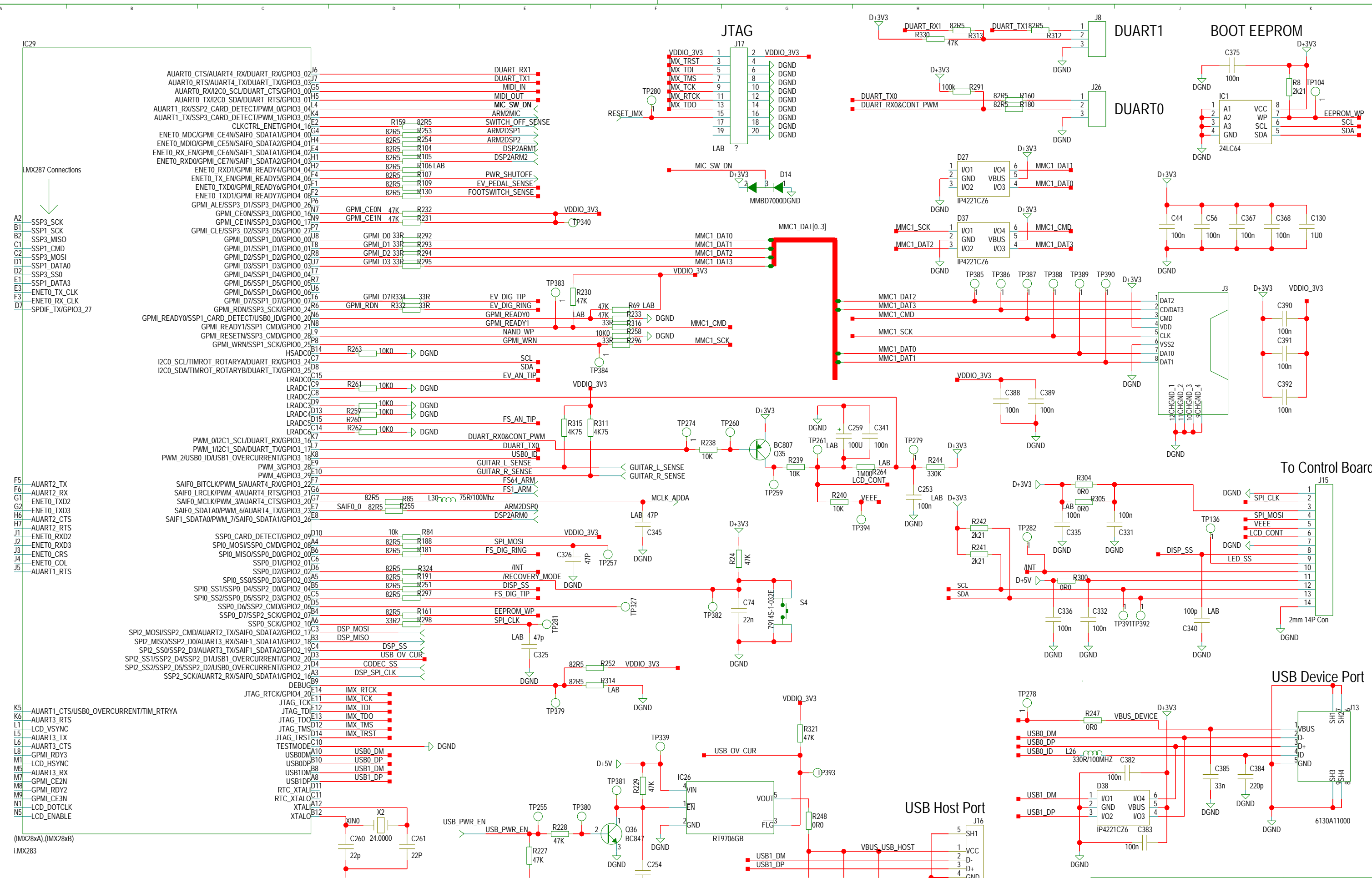


tc electronic a/s				Designer(s)	JDA
Title BAFFIN				Module title MODULE TITLE	
Number P22625	Revision H	Variant A	Version C	Board type MAINBOARD	
Date 07-11-2013_09:42	Filename hg_analog_out			Page / of 1 / 12	



tc electronic a/s				Designer(s) JDA
Title BAFFIN	Revision H			Module title MODULE TITLE
Number P22625	Variant A	Version C	Board type MAINBOARD	
Date 07-11-2013_09:41	Filename Out_filter	Page / of 1 / 12		





i.MX287 Connections

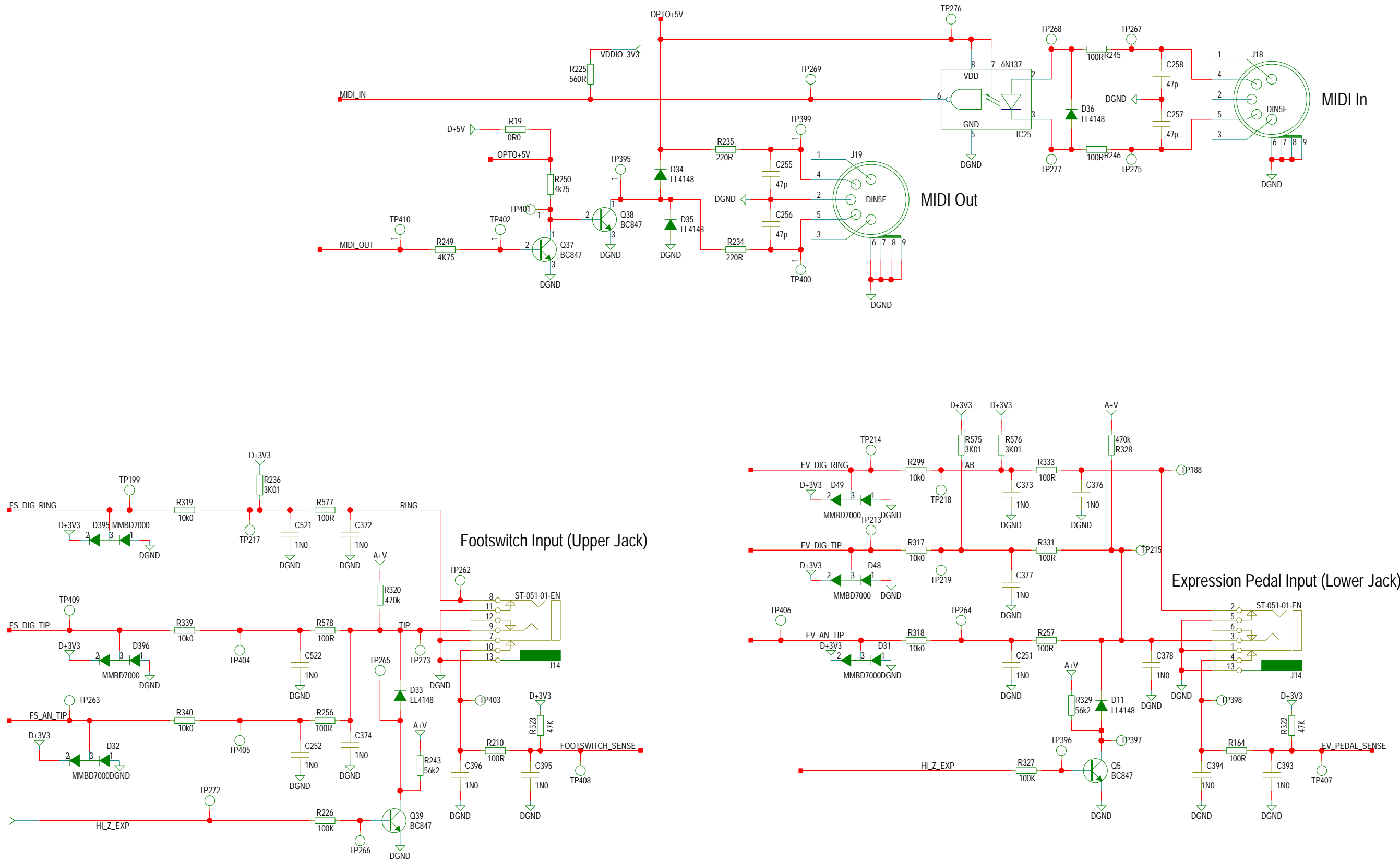
i.MX283

A2	SSP3_SCK
B1	SSP1_SCK
B2	SSP3_MISO
C2	SSP1_CMD
C2	SSP3_MOSI
D1	SSP1_DATA0
D2	SSP3_SS0
E1	SSP1_DATA3
E3	ENET0_TX_CLK
F3	ENET0_RX_CLK
D7	SPDIF_TX/GPIO3_27
F5	AUART2_TX
F6	AUART2_RX
G1	ENET0_TXD2
G2	ENET0_TXD3
H7	AUART2_CTS
J1	AUART2_RTS
J2	ENET0_RXD2
J3	ENET0_CRS
J4	ENET0_COL
J5	AUART1_RTS
K5	AUART1_CTS/USB0_OVERCURRENT/TIM_RTRYA
K6	AUART3_RTS
L1	LCD_VSYNC
L5	AUART3_TX
L6	AUART3_CTS
L8	GPMI_RDY3
M1	LCD_HSYNC
M5	AUART3_RX
M7	GPMI_CE2N
M8	GPMI_RDY2
M9	GPMI_CE3N
N1	LCD_DOTCLK
N5	LCD_ENABLE

(i.MX28xA),(i.MX28xB)

DGND:A1,A9,B11,B13,B7,C16,E15,E5,F14,F16,H10,H11,H12,H14,H16,H3,H9,J11
DGND:J12,J15,K10,K11,K9,L10,L11,L12,M14,M16,N4,P14,P16,R10,R12,T14,U1,U17

tc electronic a/s				Designer(s) JDA
Title BAFFIN	Revision H			Module title MODULE TITLE
Number P22625	Variant A	Version C	Board type MAINBOARD	
Date 07-11-2013_09:42	Filename imx283b	Page / of 1 / 12		



tc electronic a/s				Designer(s)	JDA
Title BAFFIN				Module title MODULE TITLE	
Number P22625	Revision H	Variant A	Version C	Board type MAINBOARD	
Date 07-11-2013_09:42	Filename imx283b			Page / of 1 / 12	