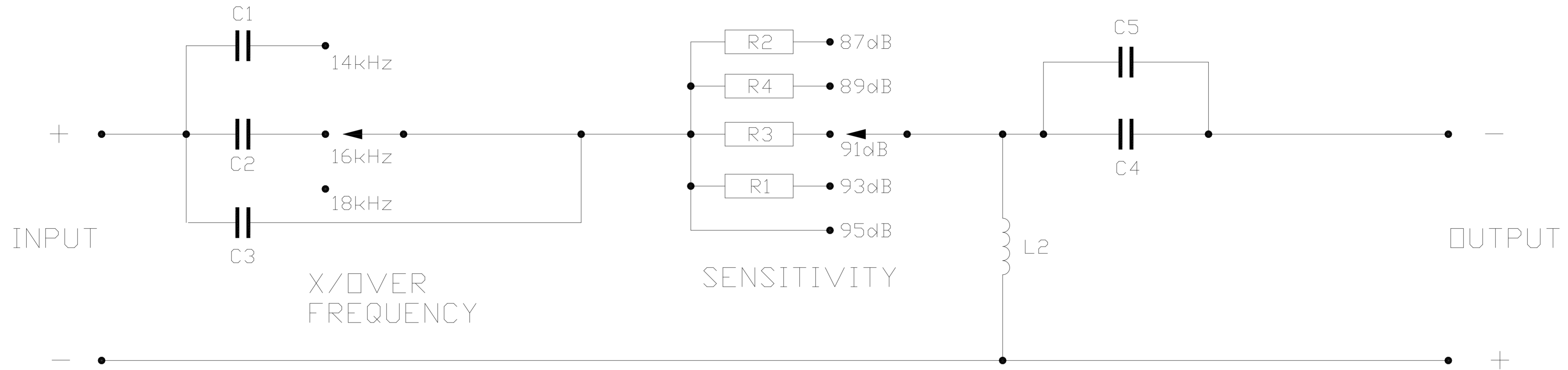
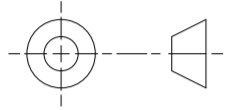


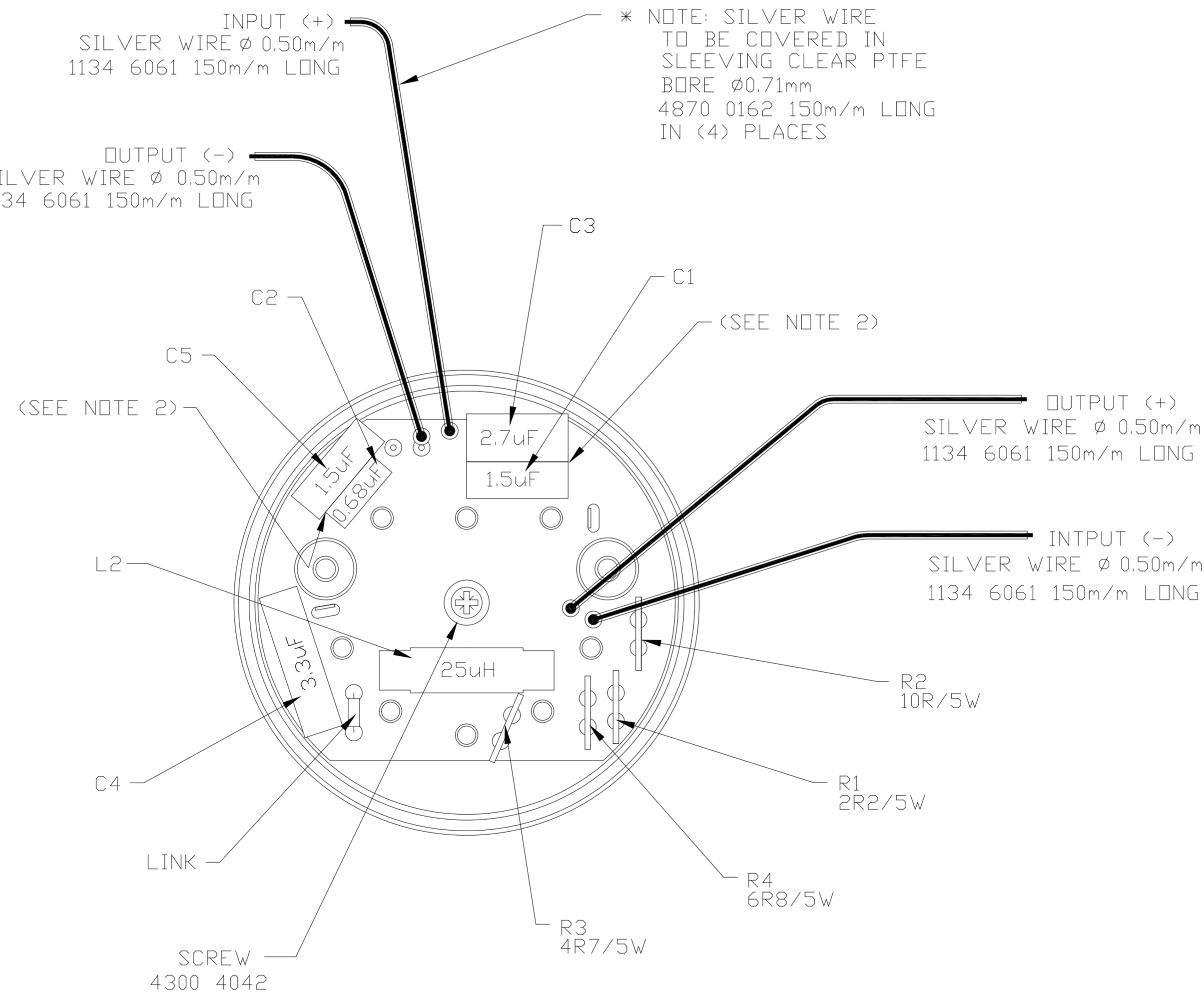
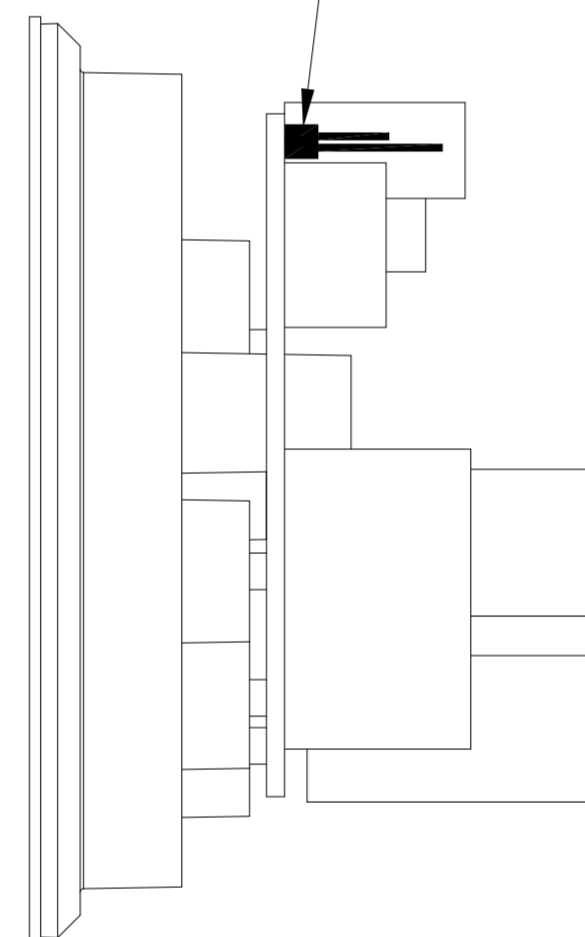
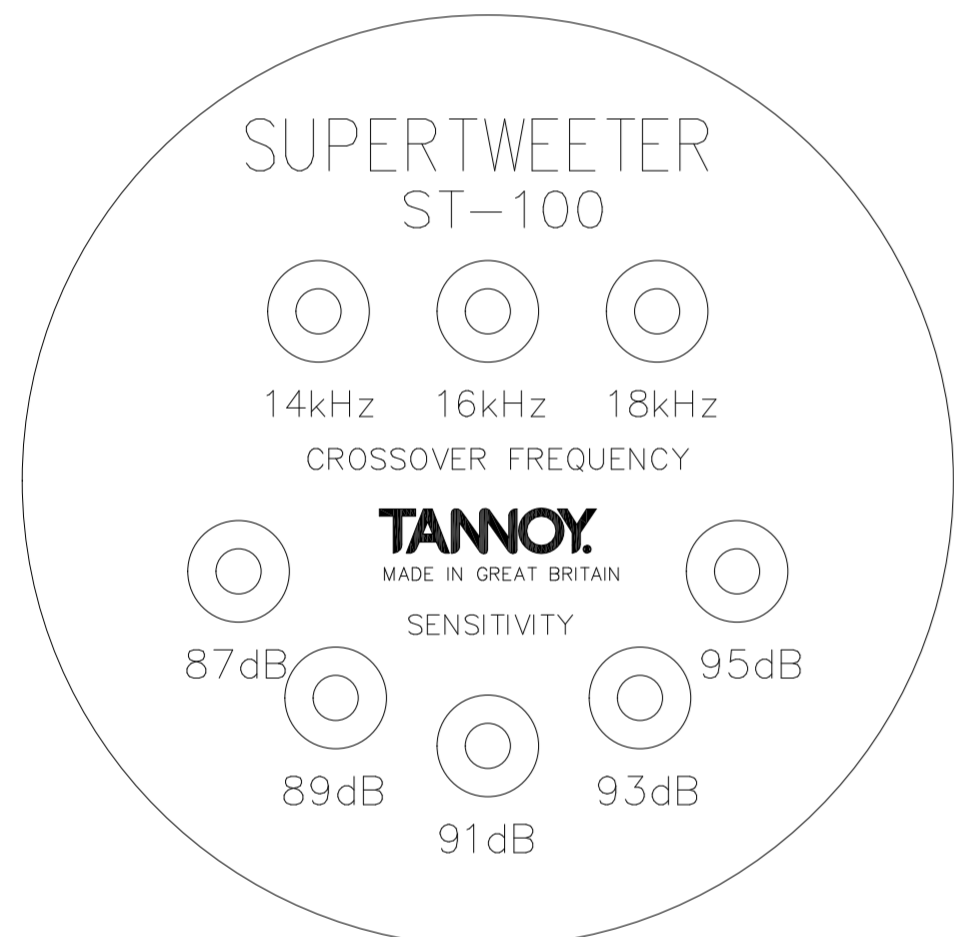
THIRD ANGLE PROJECTION



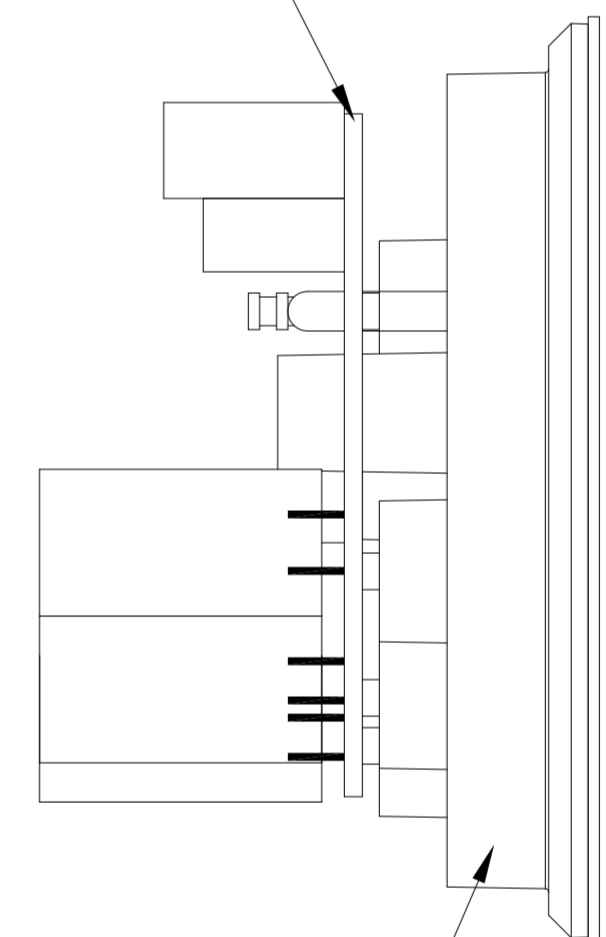
* NOTE: 1m/m TERMINALS TO BE SOLDERED TO P.C.B. AS FOLLOWS
 4783 0422 1m/m RED TO P.C.B. INPUT(+)
 4783 0424 1m/m GREEN TO P.C.B. OUTPUT(-)
 4783 0421 1m/m BLACK TO P.C.B. INPUT(-)
 4783 0423 1m/m YELLOW TO P.C.B. OUTPUT(+)

INPUT (+)
 SILVER WIRE ϕ 0.50m/m
 1134 6061 150m/m LONG

* NOTE: SILVER WIRE TO BE COVERED IN SLEEVING CLEAR PTFE BORE ϕ 0.71mm
 4870 0162 150m/m LONG IN (4) PLACES



PCB BOARD
 6620 0080



TRIM PANEL ASSEMBLY
 4940 0064

C1	1.5uF	63V	2606	1363
C2	0.68uF	63V	2606	1356
C3	2.7uF	63V	2606	1366
C4	3.3uF	63V	2606	1369
C5	1.5uF	63V	2606	1363

R1	2R2/5W	2252	9952
R2	10R/5W	2252	9956
R3	4R7/5W	2252	9954
R4	6R8/5W	2252	9955

L2	25uH AXIAL	6811	0059
----	------------	------	------

* NOTE: 1. ALL TERMINAL PINS & CONTACT STRIPS TO BE SOLDERED TO CIRCUIT
 2. COMPONENTS C1,C3 AND C2,C5 HAVE TO BE FITTED CAREFULLY AS DIMENSIONS ARE SLIGHTLY LARGER THEN ORIGINAL COMPONENTS PCB BOARD WAS DESIGNED FOR.

TANNOY

The contents, information and copyright of this document are the sole property of Tannoy Ltd and must not be published, applied or copied without the express knowledge & permission of the owners.

MATERIAL

FINISH

ST-100 SUPERTWEETER

ALL DIMENSIONS IN MILLIMETRES

Limits of tolerance unless stated:

One place of decimal dim.

Two places of decimal dim.

Holes 12.0mm dia & under

Holes over 12.0mm dia.

RoHS Compliant

Drawn

Checked

Approved

Scale 1:1

TITLE ST-100 - SUPERTWEETER CROSSOVER - TYPE 1514

ST-100 - SUPERTWEETER CROSSOVER - TYPE 1514

A2

7300 1054