



The PowerCore Concept

PowerCore is a superior range of high-end plug-ins that run on tailor-made hardware. The range covers any need that you might have, and in a quality that you've probably not been used to with other VST and AU compatible plug-ins. From basic tools like reverbs, EQs, compressor/expanders, chorus/delays, over plug-ins that are dedicated to the voice, sporting pitch correction and Voice Modeling™, to some of the very best tools on the market, like the Restoration Suite and the "System 6000 for PowerCore" plug-ins. On top of that there are renowned synths like the V-Station from Novation and the fantastic Virus!PowerCore by Access.

The Doorway to the Best Sounding DAW Processing

If you work with a computer, this is the best sounding processing you can get outside of the range of top-of-the-line hardware products. To get access to the PowerCore plug-ins you need a piece of PowerCore hardware. You can choose between PowerCore Compact, PowerCore FireWire, PowerCore PCI mkII and PowerCore Express to get a selection of great plug-ins included with the hardware, and then add plug-ins as you please from the wide selection of optional plug-ins. You can also compile your own PowerCore package of optional plug-ins by choosing PowerCore Unplugged. The PowerCore platform is not only a doorway to the high quality TC processing tools, but also to a wide range of plug-ins from renowned 3rd party developers like Sony Oxford, TC-Helicon and Access to name a few. With PowerCore 2.0 you get a fully functional trial version of the TC distributed plug-ins, so you can check out the optional plug-ins before you buy them.

Complete Integration

All production tasks have moved into the computer – from MIDI and audio recording to mixing, effects and even instruments. Users demand total integration with their favorite music and film editing applications. By combining native applications with TC-quality effects and versatile tailor-made hardware options, PowerCore makes true integration possible. The platform integrates with virtually any VST, AU and RTAS* based digital audio workstation for Mac or PC.

Logic

Pro Performer



Cubase SX



SONAR 5

Audio Integrity by Design

TC Electronic is renowned throughout the world for its hardware processors, and naturally the same level of quality is inherent in the PowerCore hardware and software. PowerCore plug-ins run on their own hardware, securing consistent and high quality performance that is independent of native system and application choice. PowerCore's software and hardware are tailor-made for each other giving you the very best performance. As a concerned professional, however, you should still check the integrity and headroom of your integrated signal path in an effort to avoid ear fatiguing desktop productions. More information about this issue can be found in the Tech Library at the TC website.

Key Features

- High quality plug-ins included with PowerCore Compact, FireWire, PCI mkII and Express
- With no bundled plug-ins PowerCore Unplugged gives you the flexibility to compose your own palette of plug-ins
- Continuous development of new optional plug-ins
- Fully functional trial versions of the TC distributed optional plug-ins are included with the PowerCore hardware
- Open platform with a growing number of 3rd party developers
- Choice between PCI, PCI Express, Compact or FireWire version
- Windows XP and Mac OS X support
- VST, AU and RTAS* support
- Multiple PowerCore units can be used in one system
- 24/96 supported

Optional plug-ins from



*) RTAS (ProTools) is supported via the VST to RTAS adapter from FXpansion (optional). More info on www.tcsupport.tc.



The Best from Both Worlds – in 5 Different Flavors

PowerCore combines the best features from the world of hardware with ultimate processing from the world of software. With PowerCore you get the superior sound of hardware and the total integration that software has to offer – you might say that PowerCore is the sound of hardware perfectly integrated with any VST, AU or RTAS environment. On top of that you get exclusive access to the best tools in the business, not only from TC Electronic, but also from a growing number of 3rd party developers. With 5 different flavors to choose from, we've giving you the ultimate freedom to pick and tailor your setup to your needs.

Portable Power – PowerCore Compact

PowerCore Compact is a portable solution, well suited for laptop production environments. The unique yet sturdy design makes the PowerCore Compact the ideal choice for productions with changing locations. 12 plug-ins are included.



Internal Power – PowerCore PCI mkII & PowerCore Express

PowerCore PCI mkII and PowerCore Express offer superior power and they are the prime choice when internal processing is preferred. Get all the benefits that a PCI or PCI Express card has to offer and experience the seamless integration of internal power. PowerCore PCI mkII supports the well known PCI slot format and the PowerCore Express supports the new ultra fast PCI Express slots. 14 plug-ins are included with both cards.



External Power – PowerCore FireWire

PowerCore FireWire provides significant processing possibilities and it is the preferred choice for those who favor external processing. Fit it in a 19" rack together with the rest of your hardware or move it easily to new production locations. 14 plug-ins are included.



DSP Card Only – PowerCore Unplugged

PowerCore Unplugged gives the flexibility to choose exactly the optional PowerCore plug-ins that you want, or just to add more power to your existing PowerCore setup. It is the same piece of hardware as the PowerCore PCI mkII but without bundled plug-ins. PowerCore Unplugged requires at least one PowerCore plug-in to run.



Comparison

	PowerCore Compact	PowerCore PCI mkII	PowerCore Express	PowerCore FireWire	PowerCore Unplugged
Included plug-ins	24/7-C, Character™, Chorus-Delay, ClassicVerb, EQsat Custom, Filtroid, MasterX3, MegaReverb, PowerCore 01, Tubifex, Vintage CL, VoiceStrip	24/7-C, Character™, Chorus-Delay, ClassicVerb, EQsat Custom, Filtroid, MasterX3, MegaReverb, PowerCore 01, Tubifex, Vintage CL, VoiceStrip, Dynamic EQ, DeNoise	24/7-C, Character™, Chorus-Delay, ClassicVerb, EQsat Custom, Filtroid, MasterX3, MegaReverb, PowerCore 01, Tubifex, Vintage CL, VoiceStrip, Dynamic EQ, DeNoise	24/7-C, Character™, Chorus-Delay, ClassicVerb, EQsat Custom, Filtroid, MasterX3, MegaReverb, PowerCore 01, Tubifex, Vintage CL, VoiceStrip, Dynamic EQ, DeNoise	No plug-ins are included.
DSPs	2 x 150 MHz	4 x 150 MHz	4 x 150 MHz	4 x 150 MHz	4 x 150 MHz
S-RAM	2 x 512 kWords	4 x 512 kWords	4 x 512 kWords	4 x 512 kWords	4 x 512 kWords
Form	Portable Design	PCI card	PCI Express card	19" Box	PCI card
Use	Laptop or Desktop	Desktop	Desktop	Laptop or Desktop	Desktop

System Requirements

Desktop, iBook or PowerBook, G4 or G5, 733 MHz or better, Mac OS X version 10.3.6 or higher, 512 MB RAM or more

FireWire and Compact: 400 MBit FireWire connector (IEEE 1394)

PCI mkII and Unplugged: a free PCI slot

Express: a free PCI Express slot

VST-, Audio Units- or RTAS-compatible application such as Logic, Nuendo, Live or Digital Performer

MAC

PC

Desktop or laptop, Pentium 4, 1.4 GHz or better, Windows XP or higher, 512 MB RAM or more

FireWire and Compact: 400 MBit FireWire connector (IEEE 1394)

PCI mkII and Unplugged: a free PCI slot

Express: a free PCI Express slot

VST-, Audio Units- or RTAS-compatible application such as Nuendo, Cubase SX or Live

Included in PowerCore Compact, PowerCore FireWire and PowerCore PCI mkII

TUBIFEX – virtual guitar amp

96 kHz

This virtual guitar amp has 3 tube stages and a speaker simulator for truly convincing amp modeling. The tubes are based on classic 12AX7 tubes, the modeled speaker was created from an actual impulse response of a 2x12 cabinet, including microphone positions. The proprietary tube simulation technology provides extremely warm and analog-sounding distortion without any audible aliasing.

Note: Runs partly on host CPU



MEGA REVERB – TC reverb processor

96 kHz

The MegaReverb plug-in comes with classic reverb features like diffusion, dense tails and realistic room impressions—six room shapes that are modeled after real rooms. Separate early reflections and tail controls, algorithms based on M5000, a high cut filter, and 100 presets, is just a few of the features that the MegaReverb sports. This is a tool that provides a genuine reverb solution for all PowerCore users.



CLASSIC VERB – classic reverb processor

96 kHz

The ClassicVerb enhances the out-of-the-box reverb flexibility of PowerCore significantly. The processor adds that “other” category of warm, lush reverb effects often associated with big expensive hardware processors to the effects menu. It’s an entirely different approach from our usual reverb, and the natural sounding reverbs provided by MegaReverb.



24/7-C – virtual limiting amplifier

96 kHz

Convincing vintage compression and limiting using one of the most desired vintage models for PowerCore. 24/7-C was inspired by one of the vintage processors synonymous with classic dynamics processing for mixing and mastering. This plug-in recreates the details of the sound and user interface of this hardware processor as closely as possible, delivering virtual vintage at its best.



EQSAT CUSTOM – hi-performance EQ

96 kHz

EQSat Custom is a very clean sounding and carefully crafted EQ-model for any application including mastering. The processor provides 5 bands with 3 parametric ones and 2 additional shelving bands. The frequency response display gives instant feedback on the applied equalization curve. And what’s more, the unique saturation emulation can be activated to create that warm, analog sound whenever desired.



MASTER X3 – virtual finalizer™

96 kHz

The knock out punch for any mixes or masters. MasterX3 is the virtual incarnation of the TC Electronic Finalizer™, the standard mastering processor in the pro audio field. MasterX3 expedites the mastering process by integrating several phases of mastering into a single, easy to use interface. It features multiband processing with expansion, compression and limiting separately for each band. High quality uncorrelated dithering is included as well.





VOICE STRIP – voice channel

96 kHz

This complete voice processing channel includes all tools required for vocal sound adjustment: Compression, De-essing, a dedicated Voice EQ, Low-Cut Filter and Gate. Compression and EQ are modeled after classic hardware devices that deliver high-end vintage tube sound, but naturally VoiceStrip can also be used for subtle processing. All modules can be run simultaneously providing you with instant total recall for professional vocal sound.



VINTAGE CL – channel compressor-limiter

96 kHz

High-quality compression and limiting on each channel is very hard to realize when limited to native processing only. Vintage CL delivers just that – up to 28 Vintage CLs can be run on one PowerCore card, or 7 per DSP. In spite of this efficiency, Vintage CL employs a carefully crafted algorithm, which emulates the behavior of industry-standard analog compression devices.



CHORUS-DELAY – modulation multi-fx

96 kHz

Chorus-Delay provides the trademark TC Electronic chorus sound. With very flexible routing and filtering facilities it recreates the 1210 Spatial Expander with its unique modulation images like Chorus, Flanging and Slap Delay. Of course you can adjust the delay time in BPM.



POWERCORE 01 – synthesizer

96 kHz

PowerCore 01 is a mono-synth that delivers results similar to the famous SH-101, with some added features like velocity and drive. Punchy bass lines, synthetic percussion sounds or synth-leads – PowerCore 01 can do it all.



FILTROID – dual filterbank

96 kHz

With its dual filters and extensive modulation capabilities, Filtroid brings the sound of analog filter banks to the PowerCore platform. The filters can be used in series or parallel for the utmost creative control and extreme filter effects. With the sidechain input it is even possible to modulate the filter from another track. Tempo Sync ensures that filter movements are always synchronized to the speed of the sequencer, and a distortion unit adds an additional edge to the sound if desired.



CHARACTER™ – adaptive sound-shaping solution

96 kHz

The Character™ plug-in is based on an Intelligent Adaptive Filtering (IAF) technology from Noveltech, and the processing affects both the frequency response and the dynamic properties of an audio source in a highly time-varying sense. Character™ intelligently identifies and enhances characteristics in the instrument- or vocal source, which are pleasing to the human ear. The processing is non-linear and highly dependent on the source material's original characteristics, enhancing the perceivably favored individuality derived from the original musical instrument or voice.

PowerCore FireWire and PCI mkII also include DeNoise (page 8) and Dynamic EQ (page 10).

System 6000 Algorithms

DVR2 DIGITAL VINTAGE REVERB

optional 96 kHz

The DVR2 Digital Vintage Reverb is another great professional reverb for the PowerCore Platform ported from the revered System 6000.

DVR2 is a pristine legacy reverb with a true and genuine vintage flavor. It is extremely well-suited for mixes where the reverb itself cries out to be a part of the mix. A lot of effort has been put into fine-tuning the DVR2 to recreate the most shining classic reverb of all time, the EMT250. During the process we have ensured that qualities of the original processor such as sweet modulation, spectral balance, spaciousness and saturation, have been preserved. But not only is DVR2 the most precise EMT250 emulation up to now, it also emulates its predecessor in the way parameters interact for different settings. Using the Vintage Reset function, your sound will be close to a well preserved EMT250. Engaging the High resolution parameters, you can lower the noise, extend the bandwidth, and exaggerate or back off the amount of chorusing. DVR2 comes with customizable presets, and focus fields for tweaking and navigation.

Features

- A true System 6000 reverb for your DAW – it's the real thing
- The most precise EMT250 emulation. With the Vintage Reset function you can even emulate its artifacts
- Parameter interaction and editing range are emulated from the EMT250
- High resolution parameters with lowered noise floor
- Focus Fields for easy preset tweaking and navigation
- Built-in preset converter – seamlessly import DVR2 presets from System 6000



VSS3 STEREO SOURCE REVERB

optional 96 kHz

The VSS3 Stereo Source Reverb for PowerCore is the genuine and original reverb directly ported from the System 6000. The VSS3 algorithm was researched and fine-tuned by TC engineers for over a year, resulting in an exceptionally precise tool. Similar to the chaotic response of a natural room, the VSS3 reacts differently to identical signals. Used for effects purposes, extensive modulation possibilities are offered for the creation of detuned or chorused sustain effects for e.g. vocal, guitar, piano or horns. Inherent in the VSS3 algorithm there are almost 800 parameters, equaling an astronomical amount of combinations. This impressive set of parameters has been condensed to a very substantial and pertinent user interface, and with the VSS3 you get a package of presets that have in many cases become industry standards. The sound of VSS3 can be heard on thousands of albums and films.

Features

- Source based design for more character and better localization
- Chaotic response like a real room
- Extremely wide editing range and “story telling capability”
- Many hundred industry standard presets available
- Fully mono compatible: A mix doesn't become dry in mono
- Piano-correctness. Modulation is not necessary
- Extremely wide dynamic range
- Focus Fields for easy preset tweaking and navigation
- Built-in preset converter – import VSS3 presets from System 6000
- Dedicated presets available for music, film and post





NONLIN2 STEREO EFFECTS REVERB

optional

96 kHz

The NonLin2 Stereo Effects Reverb for PowerCore is another world class reverb directly ported from the System 6000.

NonLin2 is an effect reverb, which differs from the traditional natural sounding TC reverbs. NonLin2 is capable of generating compact vocal ambience, percussive and dramatic drum sounds, reverse reverbs and completely new “twisted” effects. Featuring an amplitude envelope that is capable of rendering an untriggered gated reverb and a ‘twist’ parameter, which can radically alter the sound, this plug-in delivers a serious advantage over other gated reverbs.

Features

- A true System 6000 reverb for your DAW. A 1:1 port of the algorithm, no emulation, no sampling – the real thing
- Envelope – Great flexibility, delivers gated reverbs without a trigger
- Reverb with a ‘twist’ – the ‘twist’ feature adds unique creative possibilities
- Presets – NonLin2 comes with fully customizable presets
- Focus Fields for easy preset tweaking and navigation
- Built-in preset converter – seamlessly import NonLin2 presets from System 6000

MD3 STEREO MASTERING

optional

96 kHz

The MD3 Stereo Mastering package for PowerCore includes two algorithms, MD3 Multiband Dynamics and BrickWall Limiter, and allows the PowerCore user to take advantage of multiband processing and precision limiting at its best. For stereo and single sources, this package brings professional production and mastering possibilities to the realm of DAWs, and integrates smoothly with serious music and film editing applications.



MD3 MULTIBAND DYNAMICS

MD3 is a high-end mastering tool that offers dual mono and stereo dynamics processing in three frequency bands. By offering a true side-chain split structure, MD3 is also capable of demanding mono material compression/limiting on two separate channels, not found in other multi-band dynamics processors. In fact, M and S components of a stereo signal can be processed separately and provide even more control making full use of the Spectral Stereo Enhancer.

Features

- Three band Expander and Compressor
- Limiter and Soft Clip functions
- Use on Dual Mono sources or Stereo signals
- Four band Parametric EQ
- MS mode for advanced image controlling
- 48 bit, fixed point, hi-res processing



BRICKWALL LIMITER

BrickWall Limiter is a stereo/dual mono limiter with new features and technology. Today, clipping and maximizing in production and mastering are being exploited to an extent where most rock and pop releases generate early listening fatigue. Distortion is generated in CD players and data reduction codecs because of mediocre processing and level control. The BrickWall Limiter is designed to adapt to the signal, investigate if the signal will create downstream distortion problems – and to remove this hazard if so decided.

Features

- Low distortion, precision Limiter
- Detects if signal is contaminated with OdBFS+ peaks
- Prevents downstream distortion from being generated
- 3 times up-sampled processing
- 48 bit, fixed point, hi-res processing

Restoration

RESTORATION SUITE – ultimate restoration tools

This suite sets a new benchmark for what is possible in audio restoration. The latest technology was used to create truly versatile tools that make the “sound of silence” far more attainable than you’ve ever imagined.

DeNoise removes broadband noise, from tape hiss to static environmental noise. DeNoise is fingerprint-based and offers manual adjustment for very precise and predictable processing results.

DeNoise is included with PowerCore FireWire and PCI mkII.



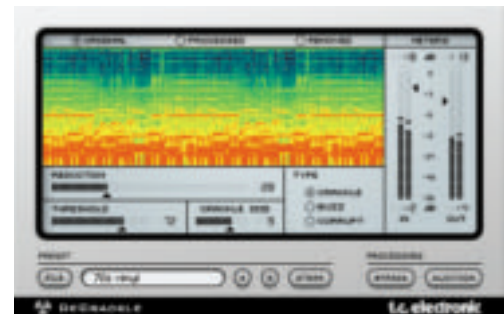
DeScratch employs unique patented technology that eliminates clicks, scratches and even long disturbing drop outs. DeScratch is perfect for removing extreme impulsive-type errors in digital signals or scratched vinyl recordings. At last it's possible to eliminate extremely large scratches without audible artifacts.



DeClick repairs crackle and clicks with an extremely easy and fast user interface. The Audition feature allows monitoring of the removed signal parts for optimal results. In combination with DeScratch, small and large artifacts can be reduced dramatically in just one pass.



DeCrackle removes artifacts ranging from 1 to 20 samples long. Crackles typically manifest themselves as constant surface noise, similar to what you would hear in the background of a record. DeCrackle has an audition feature, which can be used to playback only the noise that has been removed from the signal.



DeThump – DeThump is designed to eliminate low frequency pulses. Combined with the other Restoration Suite plugs, the handling of impulsive type degradation errors is also greatly enhanced. The DeThump algorithm targets, finds and derives waveform estimates of the thump and then eliminates it by subtraction. Multiple estimates are averaged and combined using simple cross-fades. With DeThump it is now possible to deal with strong impulsive errors of up to 12000 samples at 44.1 kHz sampling rate in length, without audible artifacts.



Note: Restoration Suite runs partly on host CPU.



SONY OXFORD INFLATOR – tube emulated dynamics processor

The Inflator is a unique plug-in that can provide an increase in the apparent loudness of almost any program, without obvious loss of quality or audible reduction of dynamic range, yet avoiding damaging increases in the peak level of the signal.

SONY OXFORD EQs – sony oxford eq suite from the oxf-r3

Sony Oxford EQs deliver unparalleled quality and flexibility with very musical results and extremely low noise and distortion – below -130 dB. The EQ & Filters plug-in is comprised of 5 different sections including HF and LF selectable to shelf.

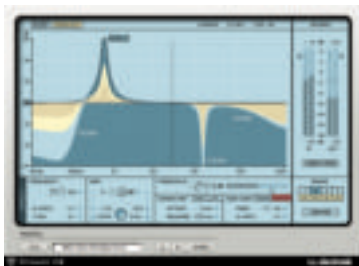
SONY OXFORD DYNAMICS – full dynamics and compression from the oxf-r3

Sony Oxford Dynamics is a plug-in bundle featuring a Channel Dynamics and a surround-capable Bus Compressor plug-in. The Dynamics section includes Compressor, Limiter, Gate and Expander with controls that have been optimized carefully for maximum flexibility within the intended specific use of that section.

SONY OXFORD TRANSMOD – instrument accentuator & softener

The Sony Transient Modulator is an application that allows the dynamic level of signals to be modified by the transients in the program material over time. The effect is to bring transient events in the program forwards, or push them into the background, so that the attacks of instruments can be accentuated or softened depending on settings.

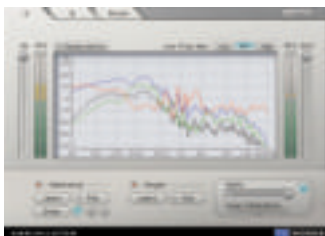
Dynamics & Correction



DYNAMIC EQ – EQ for mixing and mastering

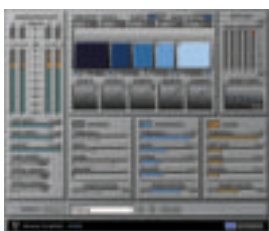
Dynamic EQ is a new tool for any mixing or mastering situation. This virtual processor eliminates the shortcomings of static EQ by providing a dynamically applied equalization. Each of the up to 4 bands can work in static or dynamic mode, or even a mixture of both. The Sidechain bands are independent of the processing bands – so the high frequency content of a mix can control the low-end, and vice versa. The pristine processing of this plug-in is all in 48-bit double precision, and may even be used in a phase linear mode.

Dynamic EQ is included with PowerCore FireWire and PCI mkII.



ASSIMILATOR – EQ-curve assimilation and morphing

Learn the sound of your favorite mix and apply it to your own. In short, that is what the Assimilator does. Equalization is one of the more difficult tasks in recording, mixing and mastering – especially when trying to match a certain sound. With Assimilator this process will be fast and instantaneous – 3 steps and you're done. The UI provides two complete sets of curves and a morph page. On the morph page, you can morph between two complete curve sets by simply moving one fader.



MASTER X5 – the virtual finalizer™

MasterX5 goes beyond the MasterX3 Finalizer™ implementation, offering 5 bands, different filter slopes and double-precision processing. This plug-in provides even more detailed access during the mastering process for CD and broadcast. It is optimized for 44.1 and 48 kHz processing and also an ideal tool for optimizing material like commercials for broadcast applications; the 5 bands allow to get even more level out of the program material.

Reverb, Dynamics & Synthesizers

MINT™ – Meta Intuitive Navigation Technology

We've gone to great length to rethink the way people work with audio. Often you spend more time tweaking a bunch a parameters and presets, and less time just listening and responding intuitively to what you hear. We want to change that, and for that reason we've invented MINT™ – Meta Intuitive Navigation Technology.

MINT™ is a design and programming philosophy that transcends traditional “UI thinking”, and it enables you to respond fast, intuitively and with total control.

FABRIK R – 4 new TC reverbs in one

new optional 96 kHz

Fabrik R combines four new TC algorithms in one single plug-in. Thanks to Meta Intuitive Navigation Technology (MINT™) it is a breeze to find the sound you're hearing inside your head. If you want to apply a “live” vibe to your vocals and instruments, use the Live Reverb. For vocals that need an even “larger” quality, choose the Hall Reverb. For that sound of the past as well as for drums and percussion, apply the Plate Reverb. If you're working with guitars try the Club Reverb, which also works great with vocals. Within each reverb you'll find it very easy to adjust any setting to your own taste. You won't waste time with nitty-gritty preset adjustments – all you really have to worry about, is using your ears.



FABRIK C – channel strip par excellence

new optional 96 kHz

The Fabrik C is a full-blown EQ, De-Esser and Compressor in one single plug-in – in short, the Fabrik C has all the qualities of a channel strip. With Meta Intuitive Navigation Technology (MINT™) you have total control of all the parameters, using only a few dedicated knobs. The EQ is a 4-band parametric EQ with high/low-pass filters – choose between 4 different filter types. Based on no-nonsense design, the de-esser is based on one fader that gives you total control. Unlike other compressors, the Fabrik C comes with an inbuilt 3-band intelligent compressor. But of course you can also choose the more common technique and switch to full-band compressor mode. Use the Fabric C as an insert on your channels – it's probably one of the best and most optimized tools you can use for that job.



VIRUS | POWERCORE by Access

– virtual synth and multi-fx processor

optional

With VirusPowerCore your native studio software will be on overdrive. It is based on the award winning Virus Engine and comes both* as a single license, offering up to four plug-in instances on one DSP, and as a multi DSP license allowing the Virus to be instanced on all PowerCore DSPs simultaneously. With 16 voices and three oscillators, two parallel multimode filters and extensive modulation matrix, the VirusPowerCore is more than just a virtual analog synth: The effects section alone would justify calling this plug-in a multi-effects processor. VirusPowerCore can be used as a VST Instrument for Windows or Mac and as an AU plug-in.

*Single and multi DSP license options



V-STATION | POWERCORE by Novation

– virtual analog synthesizer

optional

The V-StationPowerCore is built on the award winning K-Station from Novation. This awesome plug-in has 3 powerful oscillators with all the classic waveforms and a sine wave for those sub-bass grooves. Other key elements are liquid analog filters, 8-voice polyphony per instance, 6 simultaneous FX per instance and phat sounds only found in a genuine Novation synth. All the primary sound-shaping controls are available on the main screen and there are 3 additional screens with tons of possibilities. There's an arpeggiator with programmable speed, sync and sweep range within each instance.



Emulations & Voice Tools



TC THIRTY – virtual guitar amp based on AC30

optional

96 kHz

TC Thirty is a virtual model of the classic British Vox amplifier from 1961. Relying completely on PowerCore for processing, it provides the characteristic sound and behavior of the “normal channel” found on that amp. Most users of classic AC30 amplifiers have added a modification called “treble booster”. On the TC Thirty there is also a treble booster option, which was conceived with the classic sound of Queen’s Brian May in mind. Additional options also allow expanding beyond that sound and creating other tones. The plug-in provides a “No Latency” mode making the plug-in fully playable at low I/O Buffer settings and an over-sampling option allows for an even better processing quality.



HARMONY4 – virtual voices, real results

new

optional

96 kHz

With Harmony4 you can create convincing virtual harmony tracks from a single vocal, produce rich vocal harmony and memorable special effects, and have individual voice control of e.g. humanization features. Harmony voices can sound like clones of the lead singer or even like 4 different singers. Harmony4 is built upon the latest generation of harmony technology and the sonic difference lies in TC-Helicon’s research and implementation of humanization features, the accuracy and speed of the patent-pending pitch detection and other great algorithms you’ll discover when you use Harmony4 on your next song.



INTONATOR HS – vocal intonation correction

optional

The TC-Helicon Intonator HS for PowerCore fixes intonation problems in vocals on the fly, saving producers hours of recording and editing time. The plug-in utilizes the latest intonation correction technology also found in TC-Helicon’s hardware products and delivers very natural sounding results.

The user interface is straight-forward and easy-to-use with a real-time pitch and processing display. For creative applications, the maximum pitch correction range is +/- 600 Cents, even allowing you to force a melody to one note, if you like. Additionally, an innovative adaptive Low-Cut Filter removes unwanted low frequency rumble and noise – without making the voice sound thin.



VOICEMODELER – voice morphing tool

optional

VoiceModeler utilizes TC-Helicon’s unique technology to alter the sound of a voice completely. The real-time process can turn thin vocals into throaty ones – or even transform a male into a female voice. Now, one singer can have multiple Voice Personalities – and a convincing choir sound featuring different voices can be built from one source sound. VoiceModeler’s Resonance and Breath features combined with the Spectral features can be used to subtly enhance the sound of a vocal. It will make it crisper, give it slightly more body or create a breathy intimate sound – or even all at the same time.

TC Support Interactive

The TC Support Interactive web site (www.tcsupport.tc) is designed as an online support and information center. Under the section "My Stuff" you can Login to check the status of your questions, download file attachments and a lot more. Furthermore, you can download TC manuals, software updates and presets. This site has been specifically designed for the users of TC products. We constantly update the database and you will find the site to be a huge resource of information. Browse through Q&A's and discover new aspects of your TC product. If you can't find an answer online, you have the option of submitting a question to our technical support staff who will reply to you by e-mail. The TC Support Team is on constant alert to help you in any way they can.



© By TC Electronic A/S and TC Works GmbH 1999-2006. All product and company names are trademarks of their respective owners.
All specifications subject to change without notice. All rights reserved.

t.c. electronic
ULTIMATE SOUND MACHINES

TC ELECTRONIC A/S ▶ SINDALSVEJ 34 ▶ DK-8240 RISSKOV ▶ DENMARK ▶ ☎ + 45 8742 7000 ▶ [FAX] +45 8742 7010
TC ELECTRONIC INC ▶ 5706 CORSA AVENUE, SUITE 107 ▶ WESTLAKE VILLAGE ▶ CA 91362 ▶ USA ▶ ☎ (818) 665-4900 ▶ [FAX] (818) 665-4901
MAIL: INFO@TCELECTRONIC.COM
WWW.TCELECTRONIC.COM